

ACEG

Use With: OM-04760
MR-04885

PUBLICATION NUMBER PL-04886-04
July 8, 1998 Rev. B: 07/08/98
Supersedes: OM-00610-04



PUMP MODEL 12D-13

**MANUAL
PART 2 of 3**

**PARTS
LIST
WITH
PERFORMANCE CURVE**

THE GORMAN-RUPP COMPANY • MANSFIELD, OHIO

GORMAN-RUPP OF CANADA LIMITED • ST. THOMAS, ONTARIO, CANADA Printed in U.S.A.

©Copyright by the Gorman-Rupp Company



The engine exhaust from this product contains chemicals known to the State of California to cause cancer, birth defects or other reproductive harm.

PERFORMANCE CURVE – SECTION A

RECORDING MODEL AND SERIAL NUMBERS

Please record the pump model and serial number in the spaces provided below and in the separate Installation/Operation Manual accompanying your pump. Your Gorman-Rupp distributor needs this information when you require parts or service.

Pump Model: _____

Serial Number: _____

WARRANTY INFORMATION

The pump warranty is provided as part of Gorman-Rupp's support program for customers who operate and maintain their equipment as described in this manual and other accompanying literature. Please note that should the equipment be abused or modified to change its performance beyond the original factory specifications, the warranty will become void and any claim will be denied.

PERFORMANCE CURVES

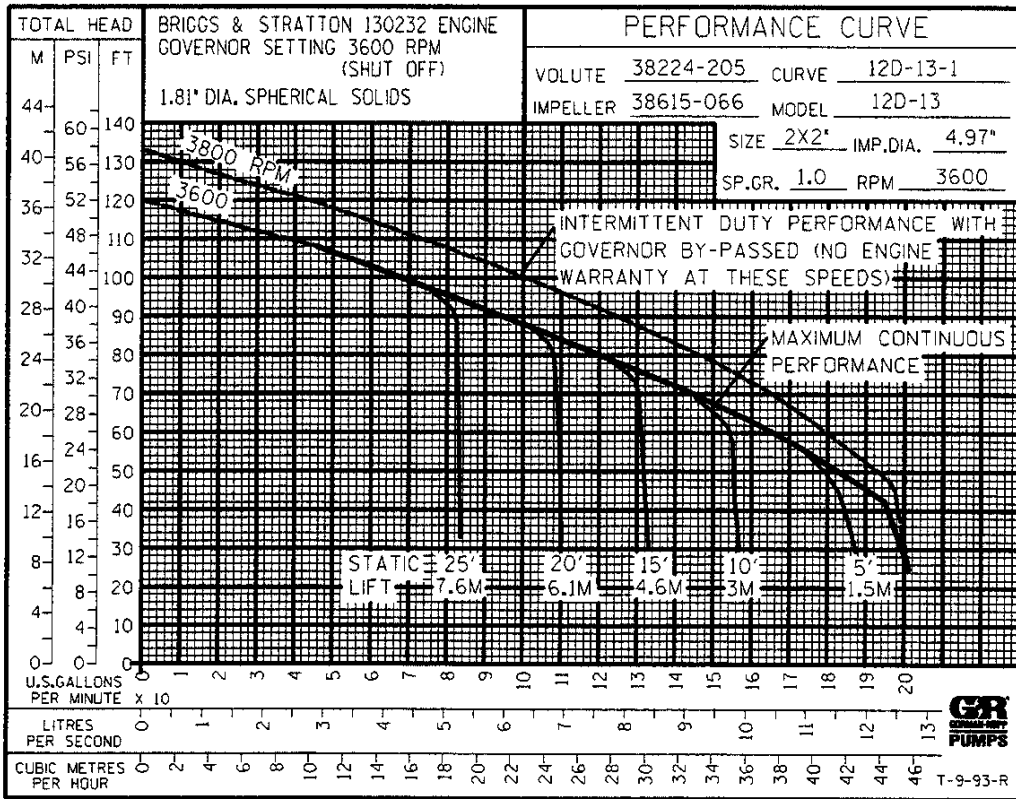
The performance curves on the following page are based on 70° F (21° C) clear water at sea level. Since pump installations are seldom identical, your performance may be different due to such factors as viscosity, specific gravity, elevation, temperature, and impeller trim.

If your pump serial number is followed by an "N", your pump is **NOT** a standard production model. Contact the Gorman-Rupp Company to verify performance or part numbers.

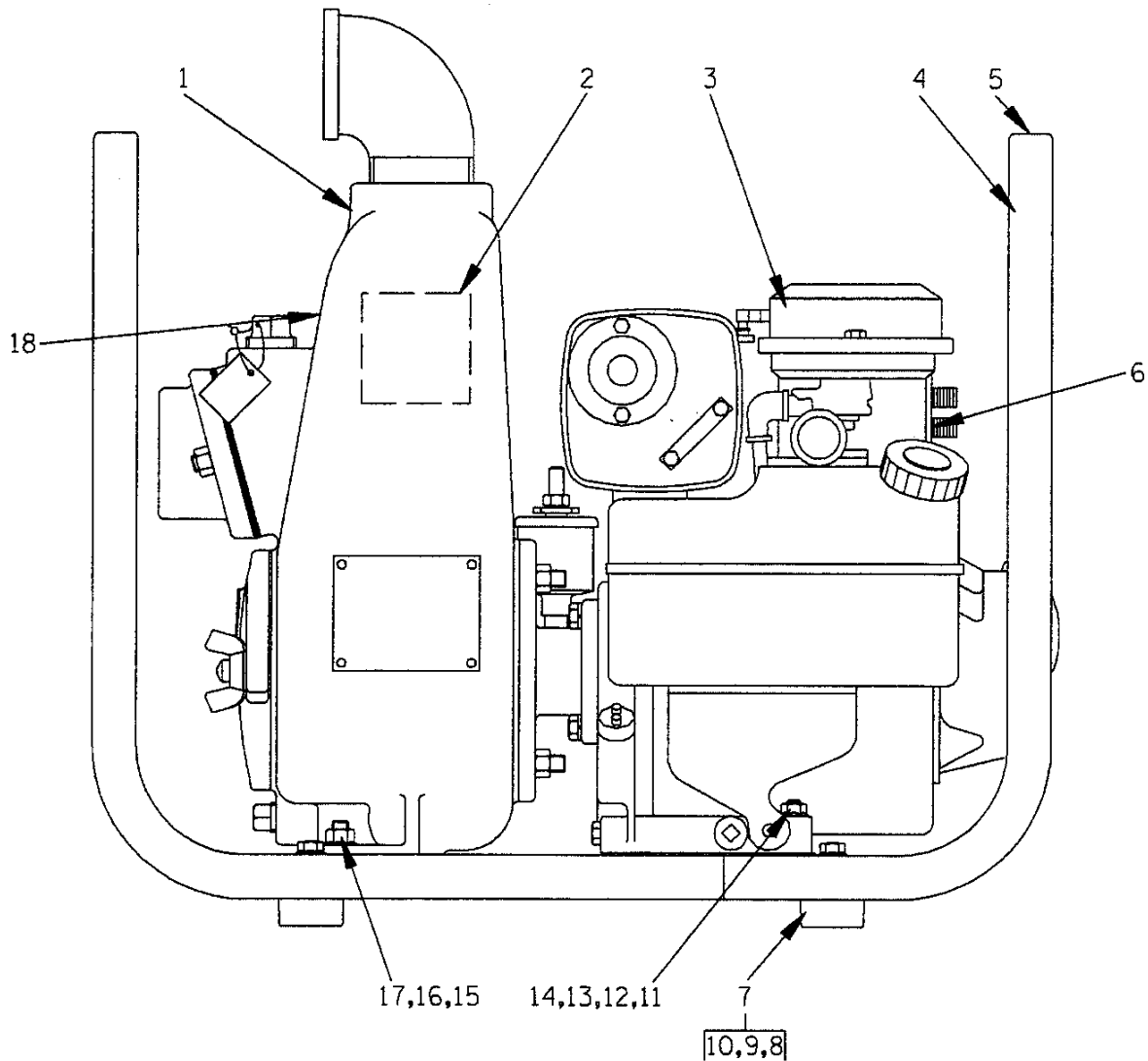


Pump speed and operating condition points must be within the continuous performance range shown on the curve(s).

This Page Intentionally Blank



Performance Curve – Model 12D-13



THE GORMAN-RUPP COMPANY • MANSFIELD, OHIO

GORMAN-RUPP OF CANADA LIMITED • ST. THOMAS, ONTARIO, CANADA Printed in U.S.A.

©Copyright by the Gorman-Rupp Company

12D-13

S/N 864439 UP

PUMP ISSUE 4

If your pump serial number is followed by an "N", your pump is NOT a standard production model. Contact the Gorman-Rupp Company to verify part numbers.

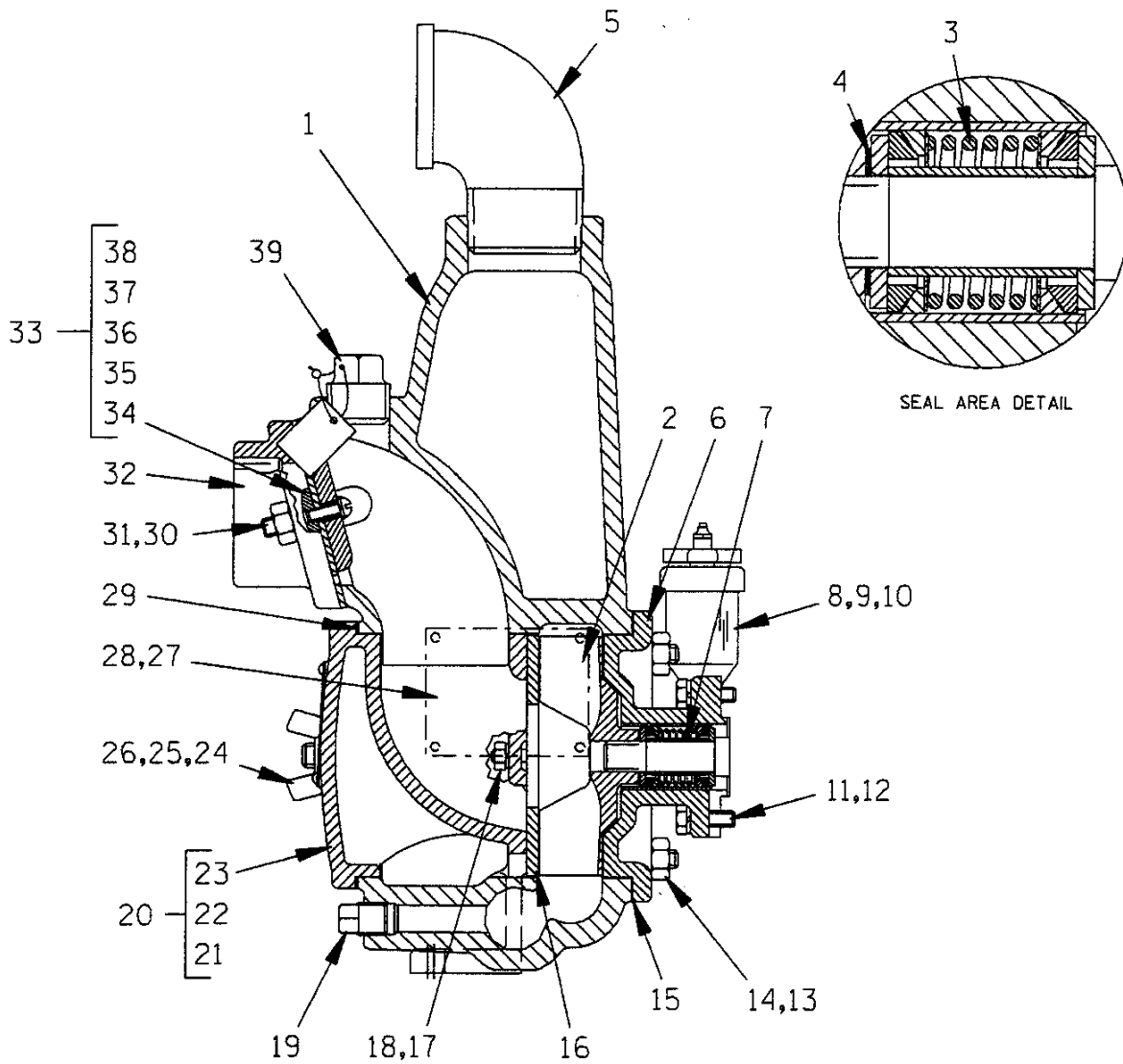
ITEM NO.	PART NAME	PART NUMBER	MAT'L CODE	QTY	ITEM NO.	PART NAME	PART NUMBER	MAT'L CODE	QTY
1	PUMP END	12D-(13) PPO	----	1	14	FLANGED HEX NUT	21765-312	----	2
2	GREASE CUP INSTR	6588BD	----	1	15	HEX HD CAPSCREW	B0605	15991	2
3	B & S 13 ENGINE	29112-064	----	1	16	FLAT WASHER	KE06	15991	2
4	ROLLOVER BASE	41583-316	24150	1	17	FLANGED HEX NUT	21765-314	----	2
5	HAND CARRY DECAL	2613FT	----	2	18	FL HERE TO PRIME STK	6588AH	----	1
6	WARNING DECAL	2613FE	----	1					
7	RUBBER FOOT MTG KIT	48152-607	----	1		NOT SHOWN:			
8 *	- RUBBER MTG FOOT	24631-401	----	4		SUCTION STICKER	6588AH	----	1
9	- FLANGED HEX NUT	21765-312	----	4		DISCHARGE STICKER	6588BJ	----	1
10	- HEX HD CAPSCREW	B0506	15991	4		STRAINER	9026D	24001	1
11	HEX HD CAPSCREW	B0507	15991	2					
12	FLAT WASHER	KE05	15991	2		OPTIONAL:			
13	SPACER	31131-073	----	2		WHEEL KIT	GRP30-52	----	1

* INDICATES PARTS RECOMMENDED FOR STOCK

THE GORMAN-RUPP COMPANY • MANSFIELD, OHIO

GORMAN-RUPP OF CANADA LIMITED • ST. THOMAS, ONTARIO, CANADA Printed in U.S.A.

©Copyright by the Gorman-Rupp Company



THE GORMAN-RUPP COMPANY • MANSFIELD, OHIO

GORMAN-RUPP OF CANADA LIMITED • ST. THOMAS, ONTARIO, CANADA Printed in U.S.A.

©Copyright by the Gorman-Rupp Company

February 10, 1987

Rev. B 07/08/98

3 of 4

Page 10.2 D2

12D-13

S/N 864439 UP

PUMP ISSUE 4

ITEM NO.	PART NAME	PART NUMBER	MAT'L CODE	QTY	ITEM NO.	PART NAME	PART NUMBER	MAT'L CODE	QTY
1	PUMP CASING	38224-205	13040	1	23	- DRIVE SCREW	BM#04-03	15990	4
2 *	IMPELLER	38615-066	11060	1	24	STUD	C0808	15991	2
3 *	GREASE SEAL ASSY	GS625	---	1	25	FLAT WASHER	KE08	15991	2
4 *	IMP ADJ SHIM SET	513A	17090	REF	26	WING NUT	BB08	15991	2
5	STREET ELBOW	RS32	11999	1	27	NAME PLATE	38818-021	13990	1
6	INTERMEDIATE ASSY	2935	10010	1	28	DRIVE SCREW	BM#04-03	15990	4
7 *	-SEAL LINER	1904	14080	1	29 *	BACK CVR GSKT	12369G	20000	1
8	PIPE NIPPLE	T0408	15079	1	30	STUD	C0606	15991	2
9	PIPE ELBOW	R04	11999	1	31	HEX NUT	D06	15991	2
10	GREASE CUP	S36	---	1	32	SUCTION FLANGE	38645-024	13040	1
11	HEX HD CAPSCREW	B0503 1/2S	15991	4	33	CHECK VALVE ASSY	46413-028	---	1
12	LOCKWASHER	J05	15991	4	34	- SMALL VALVE WEIGHT	19B	10010	1
13	STUD	C0605 1/2	15991	4	35	- LRG VALVE WEIGHT	1354	15160	1
14	HEX NUT	D06	15991	4	36	- LOCKWASHER	J04	17090	1
15 *	CASING GASKET SET	504G	18000	1	37	- RD HD MACH SCREW	X0403	17090	1
16 *	WEAR PLATE ASSY	46451-018	24150	1	38 *	- CHECK VALVE GSKT	38671-630	19070	1
17	LOCKWASHER	J04	15991	2	39	FILL PLUG ASSY	48271-063	---	1
18	HEX NUT	D04	15991	2					
19	CASING DRAIN PLUG	P06	15079	1					
20	BACK CVR ASSY	42111-919	---	1					
21	-WARNING PLATE	2613EV	13990	1					
22	-BACK COVER PLATE	NOT AVAILABLE		1					

NOT SHOWN:

STRAINER	9026D	24001	1
SUCTION STICKER	6588AG	---	1
DISCHARGE STICKER	6588BJ	---	1

* INDICATES PARTS RECOMMENDED FOR STOCK

THE GORMAN-RUPP COMPANY • MANSFIELD, OHIO

GORMAN-RUPP OF CANADA LIMITED • ST. THOMAS, ONTARIO, CANADA Printed in U.S.A.

©Copyright by the Gorman-Rupp Company

**For U.S. and International Warranty Information,
Please Visit www.grpumps.com/warranty**

or call:

U.S.: 419-755-1280

International: +1-419-755-1352

**For Canadian Warranty Information,
Please Visit www.grcanada.com/warranty**

or call:

519-631-2870

THE GORMAN-RUPP COMPANY • MANSFIELD, OHIO

GORMAN-RUPP OF CANADA LIMITED • ST. THOMAS, ONTARIO, CANADA