



PRIME-AIRE[®] SERIES
PUMP MODEL
PA6B60-6081A

MANUAL
PART 2 of 3

PARTS
LIST
WITH
PERFORMANCE CURVE

THE GORMAN-RUPP COMPANY • MANSFIELD, OHIO

GORMAN-RUPP OF CANADA LIMITED • ST. THOMAS, ONTARIO, CANADA Printed in U.S.A.

©Copyright by the Gorman-Rupp Company



The engine exhaust from this product contains chemicals known to the State of California to cause cancer, birth defects or other reproductive harm.

PERFORMANCE CURVE – SECTION A

RECORDING MODEL AND SERIAL NUMBERS

Please record the pump model and serial number in the spaces provided below and in the separate Installation/Operation Manual accompanying your pump. Your Gorman-Rupp distributor needs this information when you require parts or service.

Pump Model: _____

Serial Number: _____

WARRANTY INFORMATION

The pump warranty is provided as part of Gorman-Rupp's support program for customers who operate and maintain their equipment as described in this manual and other accompanying literature. Please note that should the equipment be abused or modified to change its performance beyond the original factory specifications, the warranty will become void and any claim will be denied.

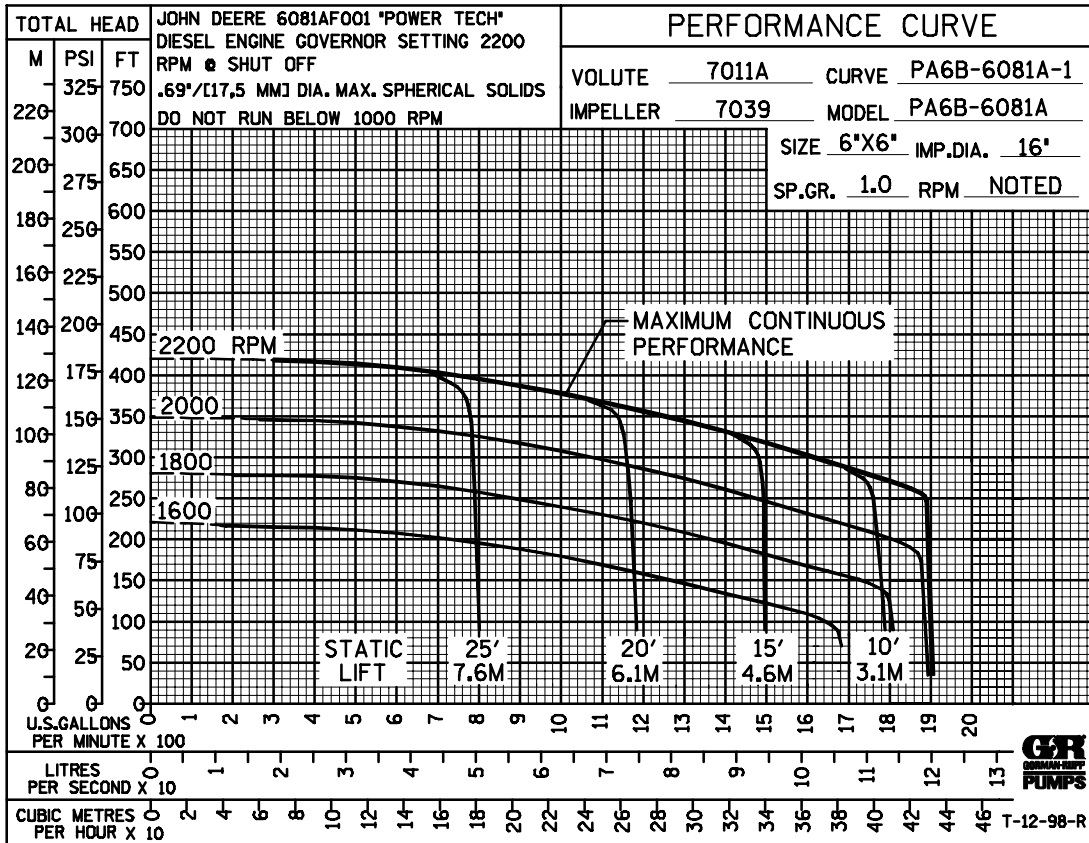
PERFORMANCE CURVE

The performance curve on the following page is based on 70° F (21° C) clear water at sea level, corrected to 0.80 specific gravity, with minimum suction lift. Since pump installations are seldom identical, your performance may be different due to such factors as viscosity, specific gravity, elevation, temperature, and impeller trim.

If your pump serial number is followed by an "N", your pump is **NOT** a standard production model. Contact the Gorman-Rupp Company to verify performance or part numbers.

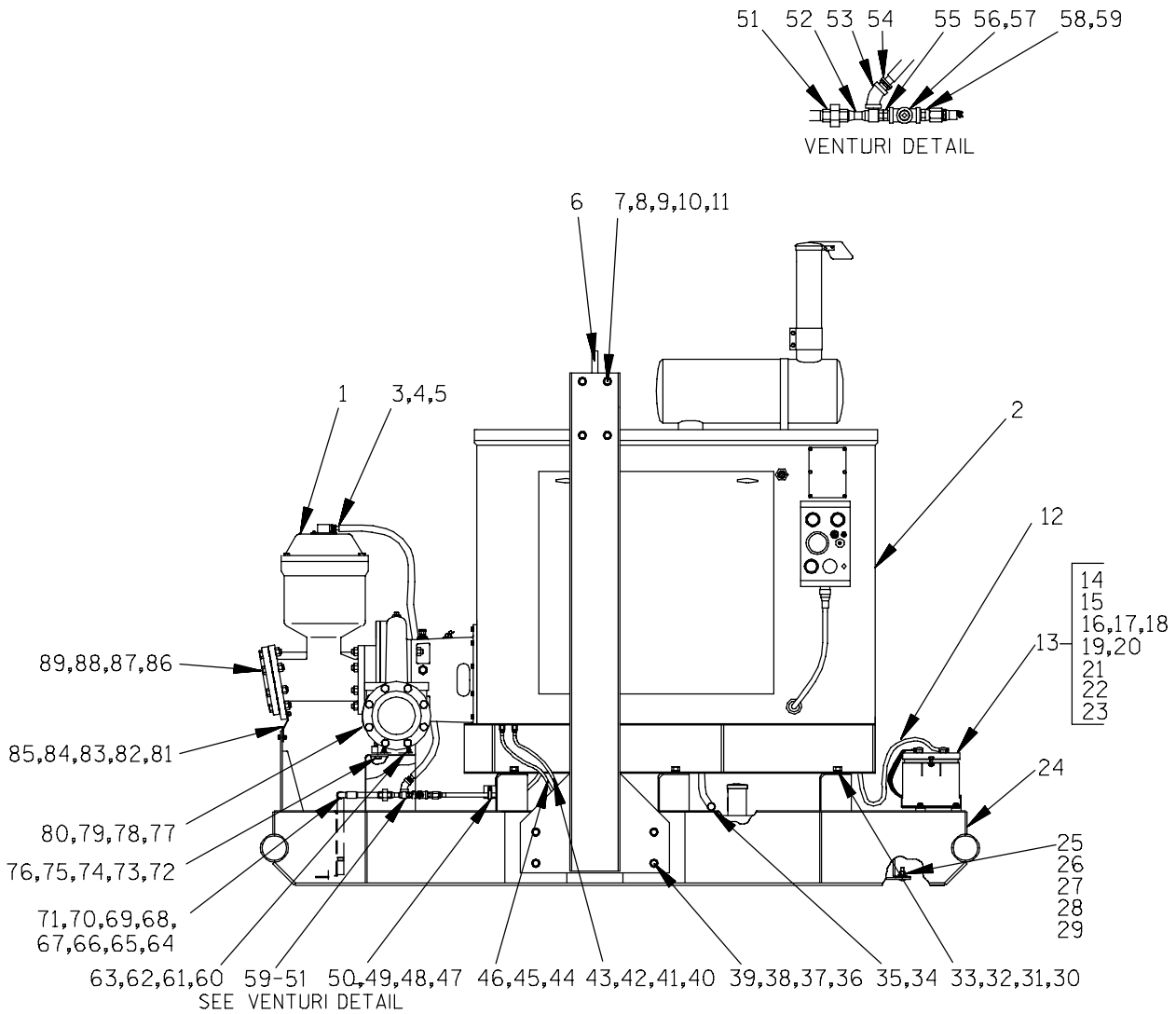


Pump speed and operating condition points must be within the continuous performance range shown on the curve.



Performance Curve – Model PA6B60-6081A

This Page Intentionally Blank



S/N 1145086 Up
PUMP ISSUE 1

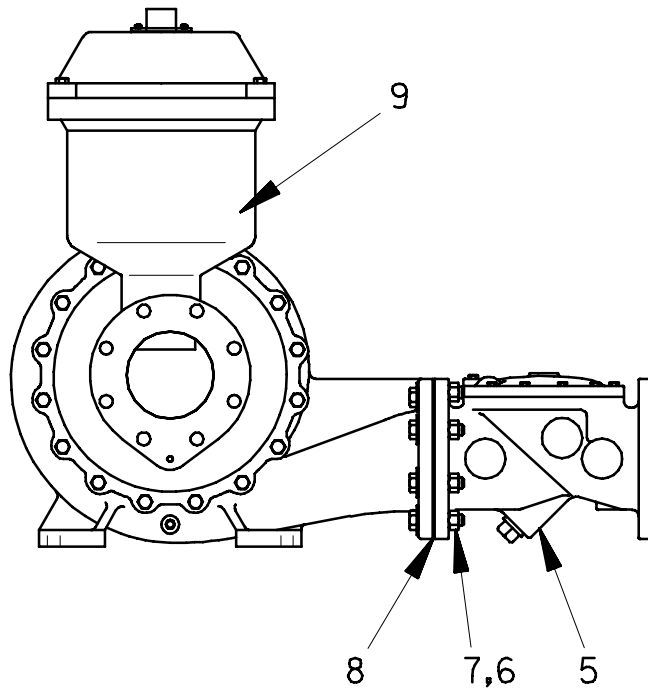
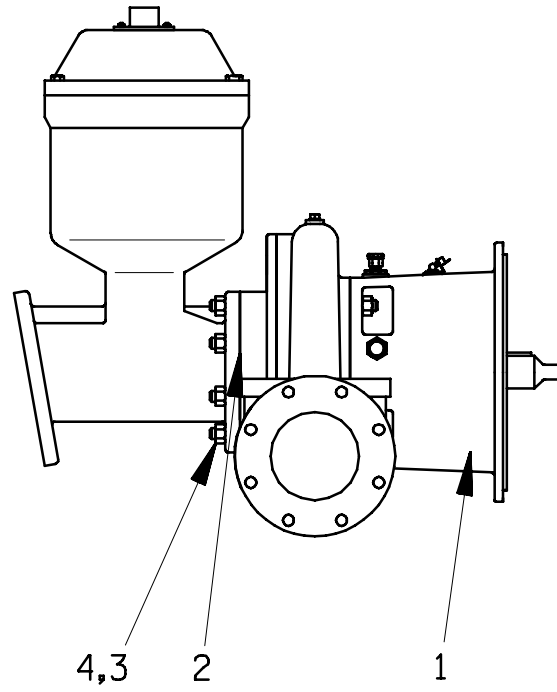
PARTS LIST
Pump Model PA6B60-6081A

If your pump serial number is followed by an "N", your pump is **NOT** a standard production model. Contact the Gorman-Rupp Company to verify part numbers.

ITEM NO.	PART NAME	PART NUMBER	MAT'L CODE	QTY	ITEM NO.	PART NAME	PART NUMBER	MAT'L CODE	QTY
1	PUMP ASSEMBLY	PA6B60-(SAE 3/11.5)		1	53	45° ELBOW	AG08	11999	1
2	J.D. 6081A ENGINE	29224-207	----	1	54	MALE HOSE END	26525-020	----	1
3	REDUCER BUSHING	AP1608	11999	1	55	REDUCING BUSHING	AP0806	15079	1
4	MALE CONNECTOR	26525-020	----	2	56	PIPE TEE	U08	11999	1
5	1/2" X 48" LG HOSE	18513-113	----	1	57	RELIEF VALVE	26662-028	----	1
6	TOP SECT. LIFTING BAIL	44718-029	24150	1	58	MALE ADAPTOR	26351-065	----	1
7	SIDE MEMBER ASSY	41881-583	24150	2	59	HOSE ASSY	46341-422	----	1
8	HEX HD CAPSCREW	B1008	15991	8	60	HEX HD CAPSCREW	B0605	15991	2
9	HEX NUT	D10	15991	8	61	HEX NUT	D06	15991	2
10	LOCKWASHER	J10	15991	8	62	LOCKWASHER	J06	15991	2
11	FLAT WASHER	K10	15991	8	63	FLAT WASHER	K06	15991	2
12	POS BATTERY CABLE	47311-129	----	1	64	PIPE COUPLING	AE08	15079	1
13	BATTERY BOX ASSY	GRP40-08C	----	1	65	PIPE ELBOW	RS08	15079	1
14	-HEX HD CAPSCREW	B0607	15991	2	66	HOSE CLAMP	S1599	----	1
15	-FLAT WASHER	K06	15991	2	67	.62" O.D. X 18" LG. HOSE	18513-113	----	1
16	-FLANGED HEX NUT	21765-314	----	2	68	CABLE CLAMP	27111-346	----	1
17	-GRND CABLE ASSY	47311-064	----	1	69	HEX HD CAPSCREW	B#10-03	15991	1
18	-BATT BOX LID ASSY	42113-012	24150	1	70	HEX NUT	D#10	15991	1
19	-12V BATTERY	SEE OPTIONS LIST		REF	71	LOCKWASHER	J#10	15991	1
20	-BATTERY TAG	38818-506	----	1	72	CHECK VALVE BRACKET	34266-019	15120	1
21	-BATTERY BOX ASSY	442431-030	----	1	73	HEX HD CAPSCREW	B1008	15991	2
22	-STUD MOUNT	24631-006	----	4	74	HEX NUT	D10	15991	2
23	-FLANGED HEX NUT	21765-314	----	8	75	LOCKWASHER	J10	15991	2
24	SKID BASE ASSY	41565-576	----	1	76	FLAT WASHER	K10	15991	2
25	FUEL TANK ASSY	46711-081	----	1	77	SUCTION FLANGE	1758	10010	1
26	CARRIAGE BOLT	AB0807	15991	8	78 *	FLANGE GASKET	1679G	18000	1
27	HEX NUT	D08	15991	8	79	HEX HD CAPSCREW	B1212	15991	8
28	LOCKWASHER	J08	15991	8	80	HEX NUT	D12	15991	8
29	FLAT WASHER	K08	15991	8	81	PRIMING CHAMBER BRKT	34535-010	15120	1
30	HEX HD CAPSCREW	B1206	15991	6	82	HEX HD CAPSCREW	B0604	15991	3
31	HEX NUT	D12	15991	6	83	HEX NUT	D06	15991	3
32	LOCKWASHER	J12	15991	6	84	LOCKWASHER	J06	15991	3
33	FLAT WASHER	K12	15991	6	85	FLAT WASHER	K06	15991	3
34	PIPE CAP	V12	15079	1	86	DISCH FLANGE	1758	10010	1
35	PIPE UNION	AH12	11999	1	87 *	DISCH FLANGE GSKT	1679G	18000	1
36	HEX HD CAPSCREW	B1008	15991	8	88	HEX HD CAPSCREW	B1212	15991	8
37	HEX NUT	D10	15991	8	89	HEX NUT	D12	15991	8
38	LOCKWASHER	J10	15991	8	NOT SHOWN:				
39	FLAT WASHER	K10	15991	16		WARNING DECAL	38816-169	----	1
40	HOSE END	26523-015	----	1		WARNING DECAL	38816-096	----	1
41	HOSE BARB FITTING	26523-333	----	1		LIFTING DECAL	38816-175	----	1
42	.37" I.D. X 26" LG. HOSE	18513-302	----	1		WARNING DECAL	38816-218	----	1
43	CONNECTOR	S1447	----	1		1000 RPM DECAL	38816-169	----	1
44	HOSE BARB FITTING	26523-386	----	2		WARNING DECAL	2613-FE	----	1
45	34" LG. PLASTIC TUBING	18523-366	----	1		PRIME AIRE DECAL	38812-078	----	2
46	HOSE CLAMP	26518-641	----	2		G-R DECAL	GR06	----	3
47	CABLE CLAMP	27111-346	----	1		LUBE DECAL	38816-075	----	1
48	HEX HD CAPSCREW	B#10-03	15991	1		WARNING DECAL	38816-269	----	1
49	HEX NUT	d#10	15991	1		LUBE DECAL	38817-007	----	1
50	LOCKWASHER	J#10	15991	1	OPTIONAL:				
51	PIPE UNION	AH08	11999	1		12V BATTERY	29331-506	----	1
52	VENTURI	26817-002	----	1					

* INDICATES PARTS RECOMMENDED FOR STOCK

THE GORMAN-RUPP COMPANY • MANSFIELD, OHIO

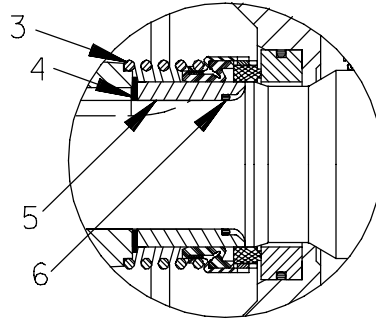


S/N 1145086 Up
PUMP ISSUE 1

PARTS LIST
PA6B60-6081A Pump Assembly

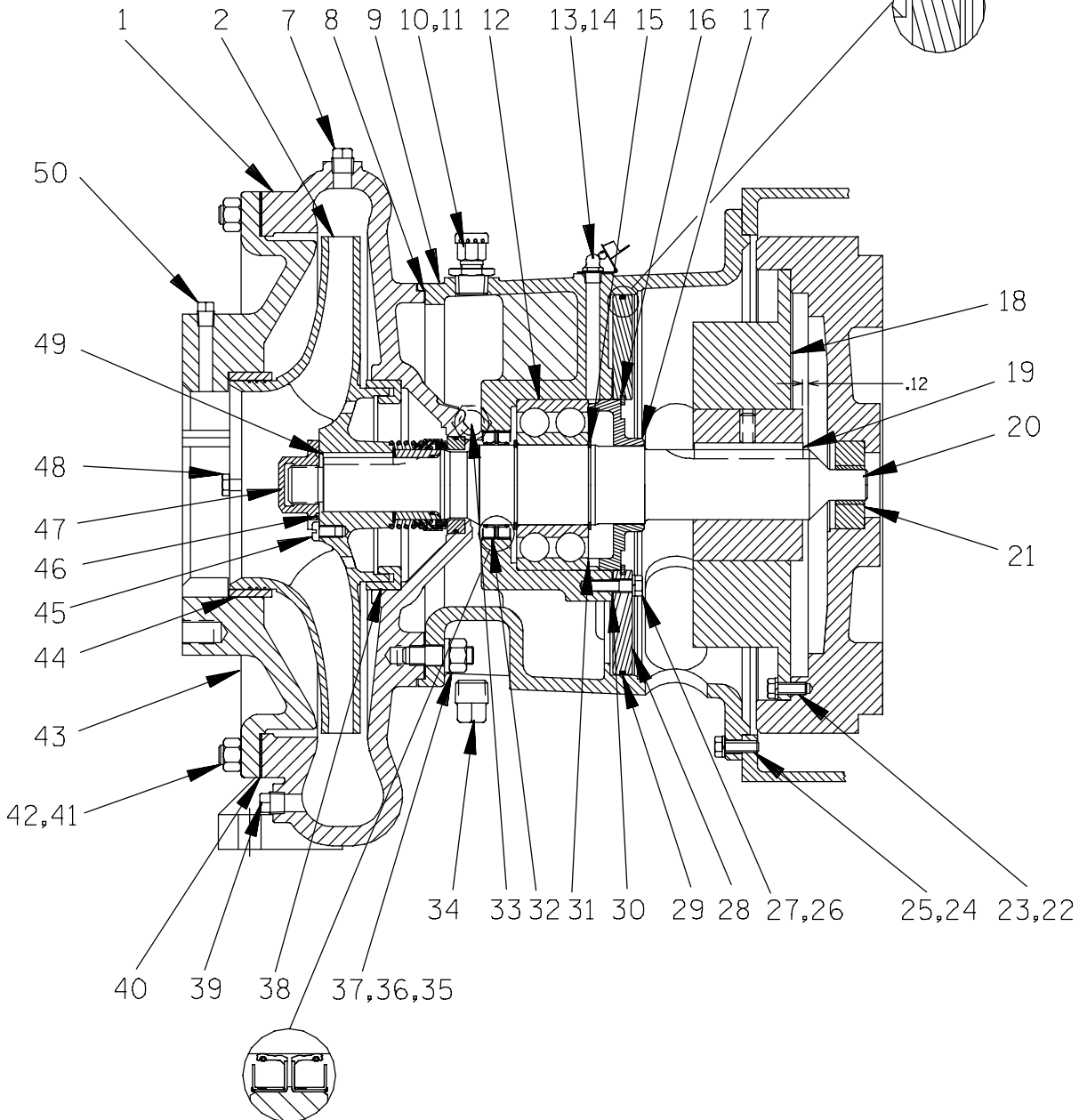
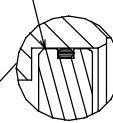
ITEM NO.	PART NAME	PART NUMBER	MAT'L CODE	QTY
1	PUMP END ASSY	66B60-(SAE3/11.5)	---	1
2	* PUMP CASING GSKT	1679G	18000	1
3	STUD	C1211	15991	8
4	HEX NUT	D12	15991	8
5	CHECK VALVE ASSY	26642-126	---	1
	-FLAPPER	26688-001	---	1
	-COVER GASKET	26688-002	---	1
6	HEX HD CAPSCREW	B1213	15991	7
7	HEX NUT	D12	15991	9
8	* CHECK VALVE GSKT	25113-036	---	1
9	STUD	C1215	15991	1
10	PRIMING CHAMBER ASSY	46112-703	---	1

* INDICATES PARTS RECOMMENDED FOR STOCK



SEAL AREA DETAIL

CHAMFER TO THE INSIDE



THE GORMAN-RUPP COMPANY • MANSFIELD, OHIO

GORMAN-RUPP OF CANADA LIMITED • ST. THOMAS, ONTARIO, CANADA

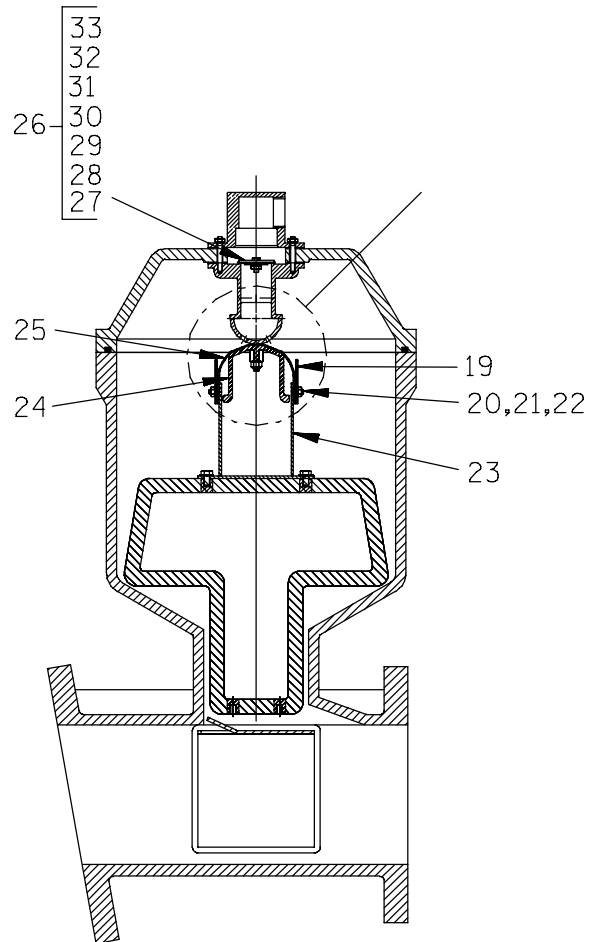
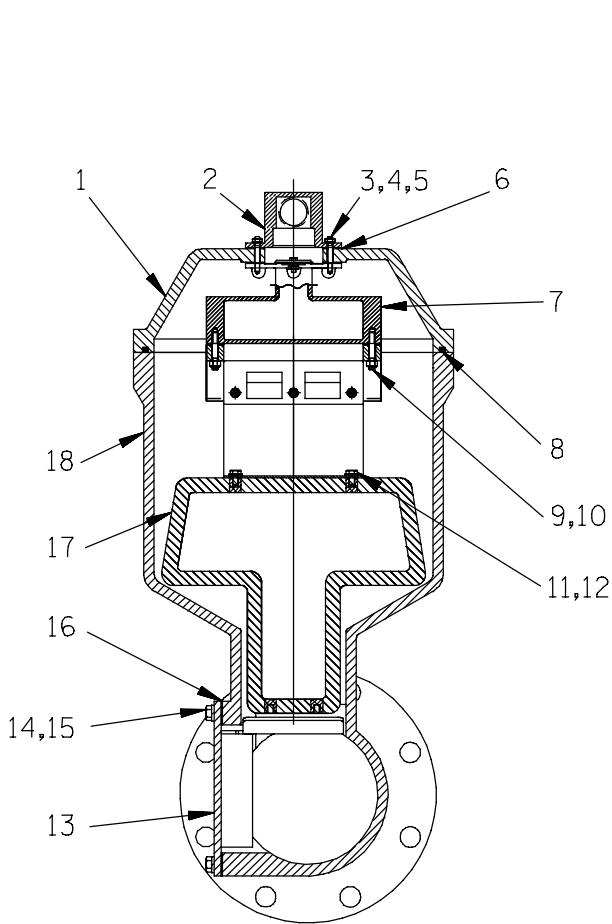
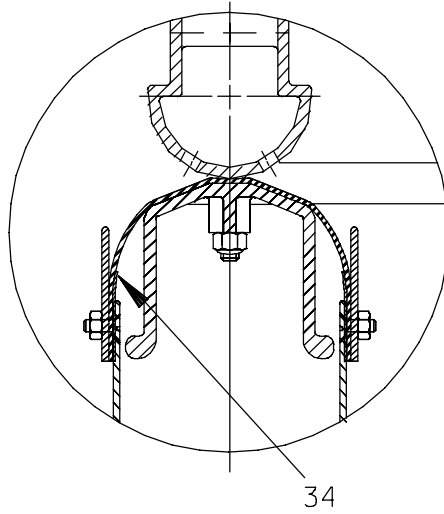
Printed in U.S.A.

S/N 1145086 Up
PUMP ISSUE 1

PARTS LIST
66B60-(SAE3/11.5) Pump End Assembly

ITEM NO.	PART NAME	PART NUMBER	MAT'L CODE	QTY	ITEM NO.	PART NAME	PART NUMBER	MAT'L CODE	QTY
1	PUMP CASING	38218-016	10000	1	29 *	CHAMBER PLATE O-RING	25152-278	---	1
2 *	IMPELLER	38628-546	11000	1	30 *	CHAMBER PLATE GASKET	38683-446	18000	1
3 *	SEAL ASSY	25271-984	---	1	31	BEARING SHIM SET	8548	15990	1
4 *	ADJ SHIM SET	8499	17000	1	32 *	OIL SEAL	25227-773	---	2
5 *	SHAFT SLEEVE	31163-017	---	1	33	SIGHT GAUGE	S1417	---	1
6 *	SHAFT SLEEVE O-RING	25154-132	---	1	34	PIPE PLUG	P12	15079	1
7	PIPE PLUG	P06	15079	1	35	STUD C1009	15991	4	
8 *	PUMP CASING GASKET	38684-502	18000	1	36	HEX NUT	D10	15991	4
9	INTERMEDIATE	38264-702	10000	1	37	LOCKWASHER	J10	15991	4
10	AIR VENT	S1703	---	1	38 *	BALANCE RING	7017	14000	1
11	REDUCING BUSHING	AP1206	15079	1	39	PIPE PLUG	P06	15079	1
12 *	DBL ROW BEARING	23421-414	---	1	40 *	SUCTION COVER GASKET	926G	18000	1
13	LUBE FITTING	S194	---	1	41	STUD	C1009	15991	16
14	CAP PLUG	25141-151	---	1	42	HEX NUT	D10	15991	16
15	RETAINING RING	S720	---	2	43	SUCTION COVER	38247-417	10000	1
16	RETAINING RING	24121-080	---	1	44 *	WEAR RING	7016	14000	1
17	BEARING RETAINER	38322-526	10000	1	45	FILLISTER HEAD SCREW	AW0602	14990	1
18	FLEX COUPLING	24392-201	---	1	46 *	IMPELLER NUT O-RING	S300	---	1
19 *	SHAFT KEY	N0814	15990	1	47	IMPELLER NUT	2177B	14000	1
20 *	IMPELLER SHAFT	38515-584	1706H	1	48	HEX HD CAPSCREW	B0604	15991	2
21	PILOT BUSHING	44144-003	---	1	49 *	IMPELLER KEY	N0609-1/2	15990	1
22	HEX HD CAPSCREW	21632-934	---	8	50	PIPE PLUG	P04	15079	1
23	LOCKWASHER	J06	15991	8	NOT SHOWN:				
24	HEX HD CAPSCREW	B0605	15991	12		STRAINER	S1529	---	1
25	LOCKWASHER	J06	15991	12		DISCHARGE STICKER	6588BJ	---	1
26	HEX HD CAPSCREW	B0606	15991	3		SUCTION STICKER	6588AG	---	1
27	LOCKWASHER	J06	15991	3		NAME PLATE	38818-127	13990	1
28	OIL CHAMBER PLATE	31255-009	15120	1		DRIVE SCREW	BM#04-03	17000	4

* INDICATES PARTS RECOMMENDED FOR STOCK



S/N 1145086 Up
PUMP ISSUE 1

PARTS LIST
46112-703 Peeler Type Priming Valve

ITEM NO.	PART NAME	PART NUMBER	MAT'L CODE	QTY	ITEM NO.	PART NAME	PART NUMBER	MAT'L CODE	QTY
1	PRIMING CHAMBER LID	38346-613	13000	1	20	FLAT HD CAPSCREW	F#10-03	17000	6
2	PEELER VALVE NECK	38349-410	10000	1	21	LOCKWASHER	J#10	17000	6
3	LOCKWASHER	J#10	17000	4	22	HEX NUT	D#10	17000	6
4	HEX NUT	D#10	17000	4	23	VLV STRAP BRKT ASSY	41881-523	2415X	1
5	STUD	21332-038	---	4	24	CLAMP PLATE	38349-406	14000	1
6 *	NECK GASKET	38683-266	19020	1	25	VALVE STRAP	33276-041	19000	1
7	VALVE BODY	38343-014	14000	1	26	CHECK VALVE ASSY	46411-112	---	1
8 *	GASKET STRIP 4.06' LG	18515-031	---	1	27 *	-CHECK VALVE	38671-413	19020	1
9	STUD	C0406 1/2	17000	2	28	-LOCKWASHER	J#10	17000	1
10	HEX LOCK NUT	BC04	17000	2	29	-HEX NUT	D#10	17000	1
11	HEX HD CAPSCREW	B0403	17000	4	30	-FLATWASHER	21161-810	---	1
12	LOCKWASHER	J04	17000	4	31	-HEX HD CAPSCREW	B#10-02	17000	1
13	INDUCTOR GUARD ASSY	42381-066	24150	1	32	-FLATWASHER	21161-811	---	1
14	HEX HD CAPSCREW	B0605	15991	4	33	-SEALING WASHER	S1590	---	1
15	LOCKWASHER	J06	15991	4	34	VLV STRAP PROTECTOR	33271-019	19000	2
16 *	CHAMBER GSKT	38687-552	18000	1		NOT SHOWN:			
17 *	PRIMING VALVE FLOAT	38349-404	19220	1		HEX HD CAPSCREW	B0807	15991	4
18	PRIMING CHAMBER	38343-017	10000	1		PIPE PLUG	P04	15079	1
19	GUIDE PLATE	33522-009	17000	2					

* INDICATES PARTS RECOMMENDED FOR STOCK

**For U.S. and International Warranty Information,
Please Visit www.grpumps.com/warranty
or call:
U.S.: 419-755-1280
International: +1-419-755-1352**

**For Canadian Warranty Information,
Please Visit www.grcanada.com/warranty
or call:
519-631-2870**