

ACDEGH

Use With: OM--04796
MR--04815

PUBLICATION NUMBER PL--04816--03
Pump Issue 3
December 12, 1997



**PUMP MODEL
S2D3 115V 1P**

**MANUAL
PART 2 of 3**

**PARTS
LIST
WITH
PERFORMANCE CURVE**

THE GORMAN-RUPP COMPANY • MANSFIELD, OHIO

GORMAN-RUPP OF CANADA LIMITED • ST. THOMAS, ONTARIO, CANADA Printed in U.S.A.

©Copyright by the Gorman-Rupp Company

PERFORMANCE CURVE – SECTION A

RECORDING MODEL AND SERIAL NUMBERS

Please record the pump model and serial number in the spaces provided below and in the separate Installation/Operation Manual accompanying your pump. Your Gorman-Rupp distributor needs this information when you require parts or service.

Pump Model: _____

Serial Number: _____

WARRANTY INFORMATION

The pump warranty is provided as part of Gorman-Rupp's support program for customers who operate and maintain their equipment as described in this manual and other accompanying literature. Please note that should the equipment be abused or modified to change its performance beyond the original factory specifications, the warranty will become void and any claim will be denied.

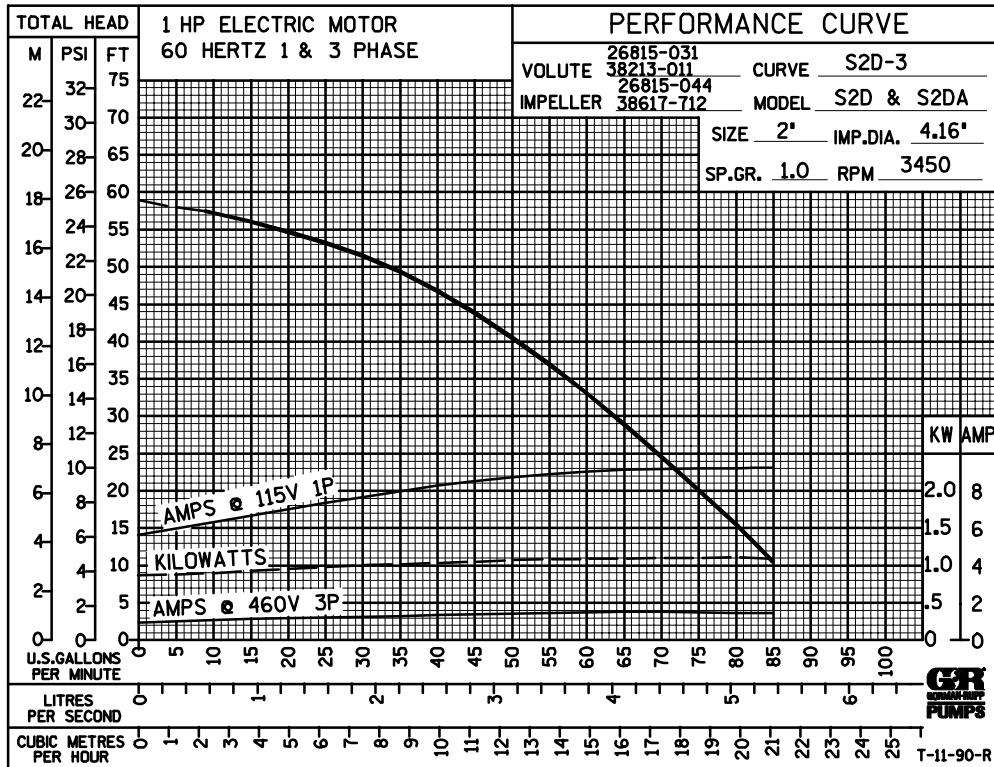
PERFORMANCE CURVES

The performance curve below is based on 70° F (21° C) clear water at sea level. Since pump installations are seldom identical, your performance may be different due to such factors as viscosity, specific gravity, elevation, temperature, and impeller trim.

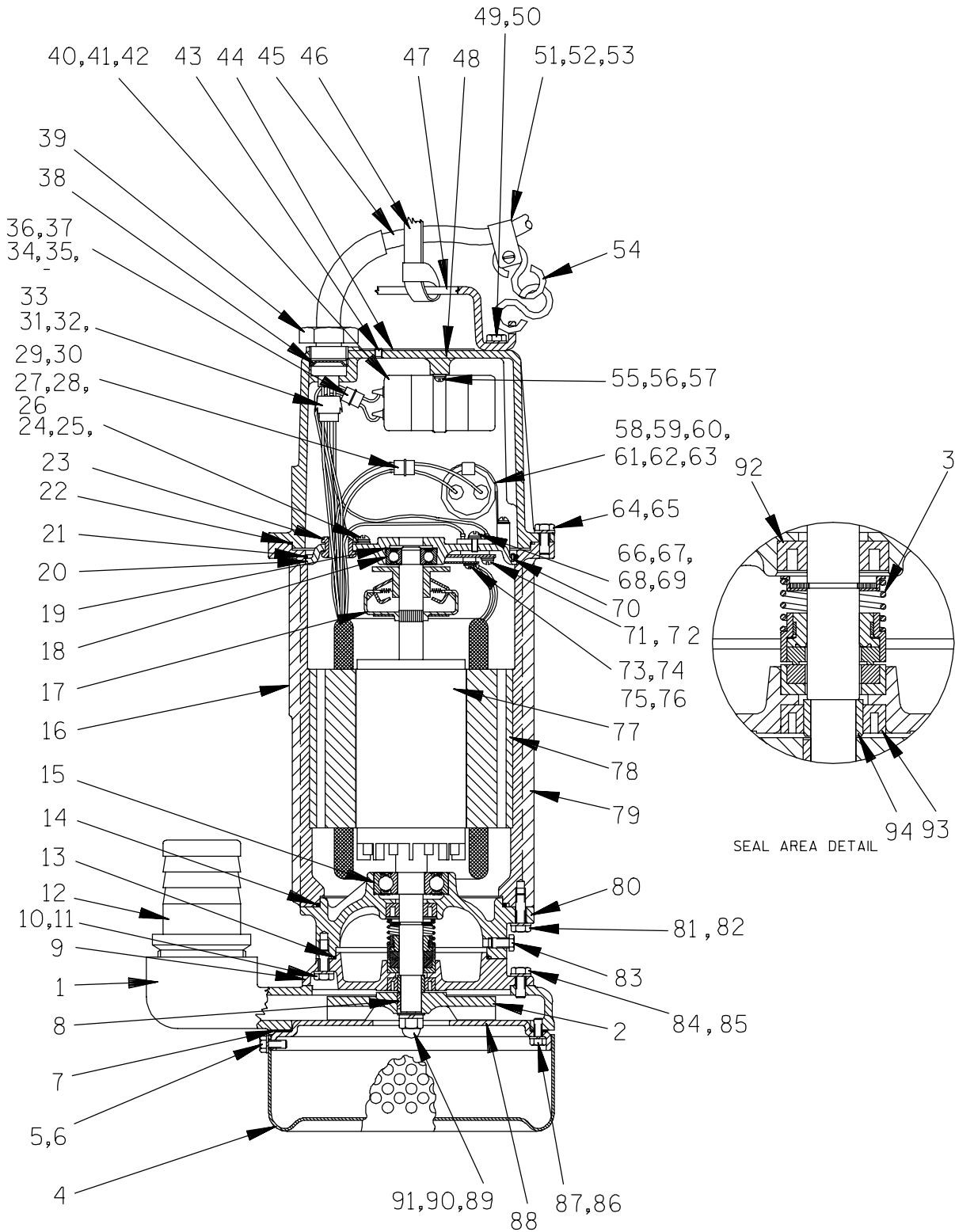
If your pump serial number is followed by an "N", your pump is **NOT** a standard production model. Contact the Gorman-Rupp Company to verify performance or part numbers.



Pump speed and operating condition points must be within the continuous performance range shown on the curve(s).



Performance Curve – Model S2D3 115V 1P



THE GORMAN-RUPP COMPANY • MANSFIELD, OHIO

GORMAN-RUPP OF CANADA LIMITED • ST. THOMAS, ONTARIO, CANADA Printed in U.S.A.

©Copyright by the Gorman-Rupp Company

S2D3 115V 1P

S/N 1135618 UP

PUMP ISSUE 3

If your pump serial number is followed by an "N", your pump is NOT a standard production model. Contact the Gorman-Rupp Company to verify part numbers.

ITEM NO.	PART NAME	PART NUMBER	MAT'L CODE	QTY	ITEM NO.	PART NAME	PART NUMBER	MAT'L CODE	QTY
1	PUMP CASING	26815-031	---	1	50	WITH LOCKWASHER	---	---	2
2 *	IMPELLER	26815-044	---	1	51	CABLE BAND	26815-260	---	1
3 *	SEAL ASSY	26815-110	---	1	52	RD HD PHL SCREW	26815-342	---	1
4	STRAINER	26815-070	---	1	53	HEX NUT	26815-380	---	1
5	HEX HD PHL SCREW	26815-355	---	4	54	CABLE CHAIN	26815-257	---	1
6	WITH LOCKWASHER	---	---	4	55	HEX HD PHL SCREW	26815-340	---	2
7 *	IMPELLER COVER GSKT	26815-150	---	2	56	WITH LOCKWASHER	---	---	2
8 *	IMPELLER KEY	26815-050	---	1	57	CAPACITOR HOLDER	26815-726	---	1
9	SEAL CHAMBER	26815-021	---	1	58	STARTING CAPACITOR	26815-172	---	1
10	HEX HD CAPSCREW	26815-306	---	4	59	WITH LEAD WIRE	---	---	2
11	WITH LOCKWASHER	---	---	4	60	WITH RUBBER CAP	---	---	2
12	HOSE ADAPTOR	26815-422	---	1	61	CAPACITOR HOLDER	26815-722	---	1
13 *	SEAL CHAMBER O-RING	26815-142	---	1	62	RD HD PHL SCREW	26815-340	---	1
14 *	LWR MTG PLATE O-RING	26815-145	---	1	63	WITH LOCKWASHER	---	---	1
15 *	BALL BEARING	23282-004	---	1	64	HEX HD CAPSCREW	26815-306	---	4
16	PUMP SPEC PLATE	38814-030	13990	1	65	WITH LOCKWASHER	---	---	4
17	CENT SWTCH ACTUATOR	26815-184	---	1	66	RD HD PHL SCREW	26815-341	---	2
18 *	BALL BEARING	23257-003	---	1	67	WITH LOCKWASHER	---	---	2
19 *	BEARING SHIM	26815-134	---	1	68	FLAT WASHER	26815-374	---	2
20	MOUNTING PLATE	26815-164	---	1	69	OVERLOAD PROTECTOR	26815-201	---	1
21	RING CLAMP	26815-166	---	1	70	RD HD PHL SCREW	26815-335	---	2
22 *	HEAD O-RING	26815-144	---	1	71	RD HD PHL SCREW	26815-340	---	2
23 *	GROMMET	26815-292	---	1	72	WITH LOCKWASHER	---	---	2
24	RD HD PHL SCREW	26815-341	---	1	73	CENT SWITCH CONTACT	26815-195	---	1
25	WITH LOCKWASHER	---	---	1	74	TERMINAL	26815-560	---	2
26	FLAT WASHER	26815-374	---	1	75	LOCKWASHER	26815-362	---	2
27	SOCKET LOCK	26815-540	---	4	76	RD HD PHL SCREW	26815-337	---	2
28	PIN LOCK	26815-550	---	4	77 *	ROTOR W/SHAFT	26815-853	---	1
29	HOUSING PIN	27245-004	---	2	78	STATOR	26815-843	---	1
30	SOCKET HOUSING	27245-014	---	2	79	MOTOR HOUSING	26815-825	---	1
31	CONTACT	26815-199	---	6	80	LWR MOUNTING PLATE	26815-701	---	1
32	AMP-LOCK PLUG	27245-023	---	1	81	HEX HD CAPSCREW	26815-307	---	4
33	AMP-LOCK CAP	27245-033	---	1	82	WITH LOCKWASHER	---	---	4
34	SOCKET LOCK	26815-540	---	2	83	SEAL CAVITY	26815-400	---	1
35	PIN LOCK	26815-550	---	2		DRAIN/FILL PLUG			
36	HOUSING PIN	27245-004	---	1	84	HEX HD CAPSCREW	26815-306	---	4
37	SOCKET HOUSING	27245-014	---	1	85	WITH LOCKWASHER	---	---	4
38	BEVELED WASHER	26815-254	---	1	86	HEX HD PHL SCREW	26815-355	---	4
39	CABLE LOCKNUT	26815-250	---	1	87	WITH LOCKWASHER	---	---	4
40	RUNNING CAPACITOR	26815-174	---	1	88	IMPELLER COVER	26815-060	---	1
41	WITH LEAD WIRE	---	---	2	89	IMPELLER WASHER	26815-052	---	
42	WITH RUBBER CAP	---	---	2	90	LOCKWASHER	26815-368	---	1
43	PRESSURE TEST PLUG	26815-405	---	1	91	IMPELLER LOCKNUT	26815-053	---	1
44	IDENT PLATE	2613EF	13990	1	92 *	OIL SEAL	26815-120	---	1
45 *	POWER CABLE	26815-240	---	1	93 *	DUST SEAL	26815-121	---	1
46 *	LIFTING ROPE	26815-650	---	1	94 *	SHAFT SLEEVE	31133-182	17040	1
47	HANDLE	26815-080	---	1		OPTIONAL:			
48	HEAD	26815-005	---	1		CONVERSION FIRE	48224-001	---	1
49	RD HD CAPSCREW	26815-306	---	2		FIGHTER KIT			

* INDICATES PARTS RECOMMENDED FOR STOCK

THE GORMAN-RUPP COMPANY • MANSFIELD, OHIO

GORMAN-RUPP OF CANADA LIMITED • ST. THOMAS, ONTARIO, CANADA Printed in U.S.A.

**For U.S. and International Warranty Information,
Please Visit www.grpumps.com/warranty
or call:
U.S.: 419-755-1280
International: +1-419-755-1352**

**For Canadian Warranty Information,
Please Visit www.grcanada.com/warranty
or call:
519-631-2870**