

ACE

Use With: OM-04760  
MR-04959

PUBLICATION NUMBER PL-04778-02

February 2, 1999

Rev. A 02/08/99

Supersedes: OM-03544-02



# PUMP MODEL 13D-L60E

**MANUAL  
PART 2 of 3**

**PARTS  
LIST  
WITH  
PERFORMANCE CURVE**

**THE GORMAN-RUPP COMPANY • MANSFIELD, OHIO**

GORMAN-RUPP OF CANADA LIMITED • ST. THOMAS, ONTARIO, CANADA Printed in U.S.A.

©Copyright by the Gorman-Rupp Company



**The engine exhaust from this product contains chemicals known to the State of California to cause cancer, birth defects or other reproductive harm.**

## PERFORMANCE CURVE – SECTION A

### RECORDING MODEL AND SERIAL NUMBERS

Please record the pump model and serial number in the spaces provided below and in the separate Installation/Operation Manual accompanying your pump. Your Gorman-Rupp distributor needs this information when you require parts or service.

Pump Model: \_\_\_\_\_

Serial Number: \_\_\_\_\_

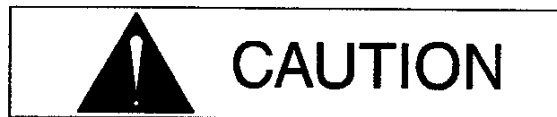
### WARRANTY INFORMATION

The pump warranty is provided as part of Gorman-Rupp's support program for customers who operate and maintain their equipment as described in this manual and other accompanying literature. Please note that should the equipment be abused or modified to change its performance beyond the original factory specifications, the warranty will become void and any claim will be denied.

### PERFORMANCE CURVES

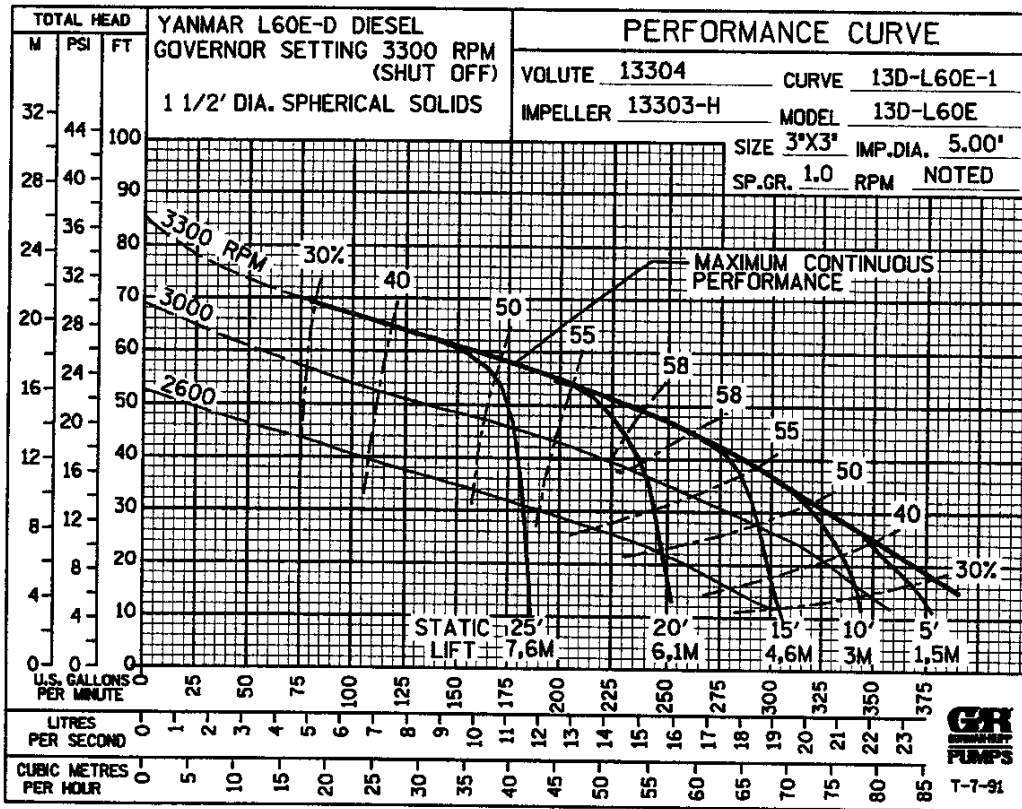
The performance curves on the following page are based on 70° F (21° C) clear water at sea level. Since pump installations are seldom identical, your performance may be different due to such factors as viscosity, specific gravity, elevation, temperature, and impeller trim.

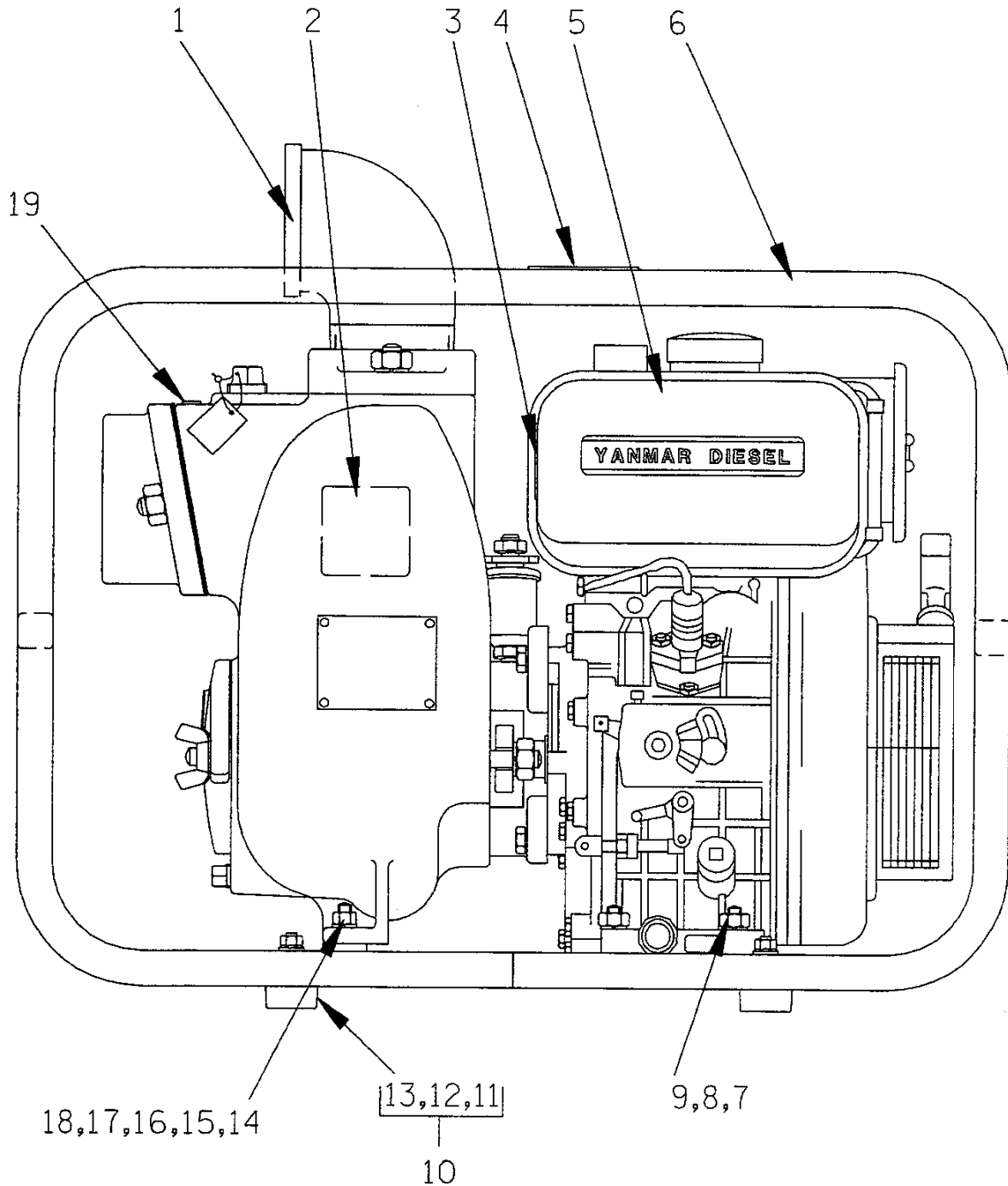
If your pump serial number is followed by an "N", your pump is **NOT** a standard production model. Contact the Gorman-Rupp Company to verify performance or part numbers.



Pump speed and operating condition points must be within the continuous performance range shown on the curve(s).

**This Page Intentionally Blank**





**THE GORMAN-RUPP COMPANY • MANSFIELD, OHIO**

GORMAN-RUPP OF CANADA LIMITED • ST. THOMAS, ONTARIO, CANADA Printed in U.S.A.

©Copyright by the Gorman-Rupp Company

October 22, 1998

Rev. A 02/08/99

1 of 4

Page 10.3 D1.3

# 13D-L60E

S/N 1144428 UP

## PUMP ISSUE 2

If your pump serial number is followed by an "N", your pump is NOT a standard production model. Contact the Gorman-Rupp Company to verify part numbers.

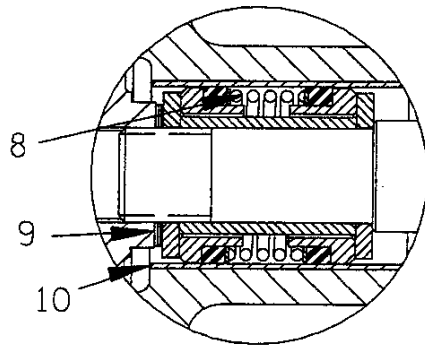
ITEM NO.	PART NAME	PART NUMBER	MAT'L CODE	QTY
1	PUMP END ASSY	13D-(L60E)	---	1
2	GREASE CUP INSTRUCTION	6588BD	---	1
3	WARNING DECAL	2613FE	---	1
4	HAND CARRY DECAL	2613FT	---	2
5	YANMAR DIESEL ENGINE	29239-001	---	1
6	ROLLOVER BASE	41583-333	24150	1
7	FLAT WASHER	K06	15991	4
8	HEX HD CAPSCREW	B0607	15991	4
9	FLANGED HEX NUT	21765-314	---	4
10	RUBBER FOOT MOUNTING KIT	48152-607	---	1
11	-MOUNTING FOOT	24631-401	---	4
12	-HEX HD CAPSCREW	B0506	15991	4
13	-FLANGED HEX NUT	21765-312	---	4
14	FLAT WASHER	K06	15991	2
15	HEX HD CAPSCREW	B0607	15991	2
16	SPACER	31141-027	13000	2
17	LOCKWASHER	J06	15991	2
18	HEX NUT	D06	15991	2
19	PRIMING STICKER	6588AH	---	1
OPTIONAL:				
	WHEEL KIT	GRP30-54	---	1

\* INDICATES PARTS RECOMMENDED FOR STOCK

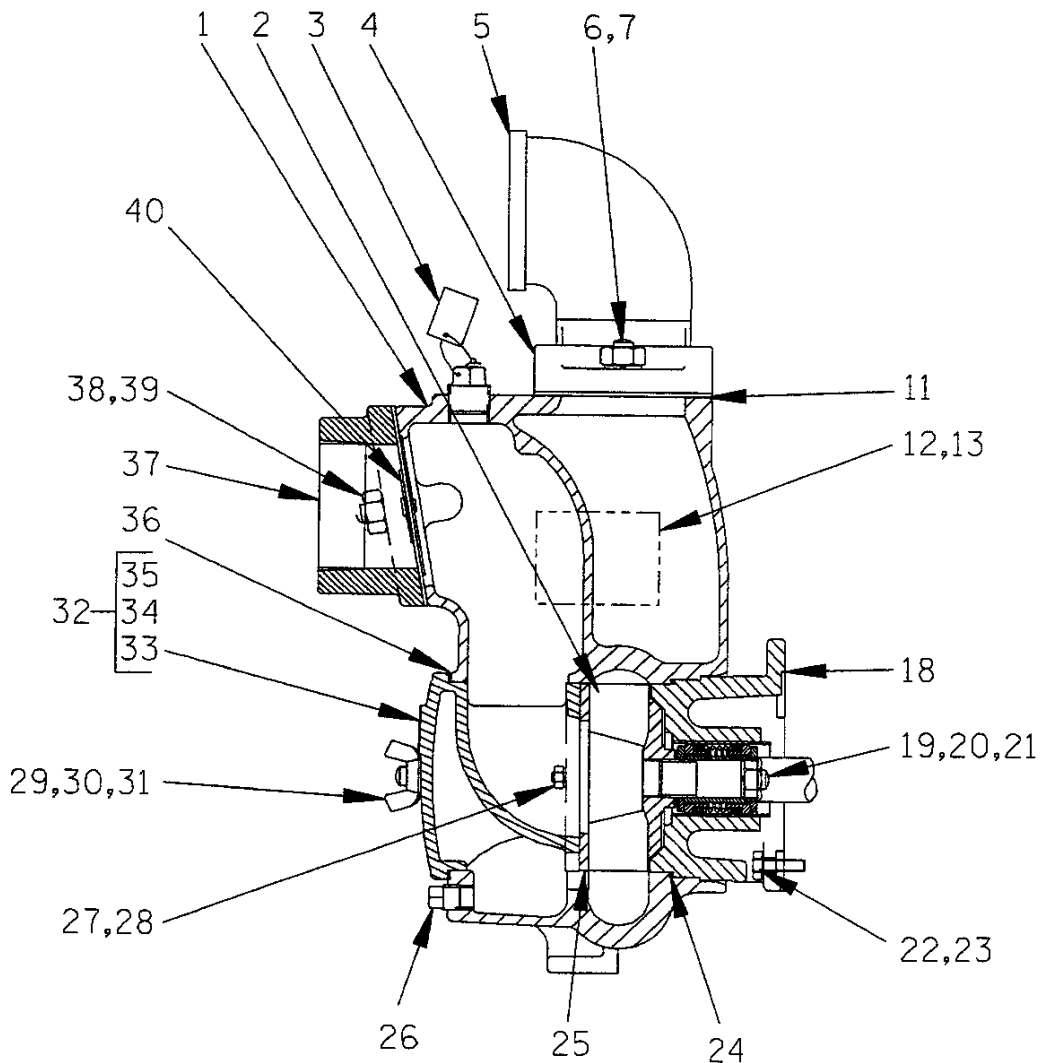
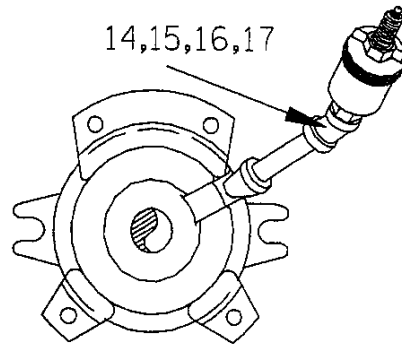
## THE GORMAN-RUPP COMPANY • MANSFIELD, OHIO

GORMAN-RUPP OF CANADA LIMITED • ST. THOMAS, ONTARIO, CANADA Printed in U.S.A.

©Copyright by the Gorman-Rupp Company



SEAL AREA DETAIL



**THE GORMAN-RUPP COMPANY • MANSFIELD, OHIO**

GORMAN-RUPP OF CANADA LIMITED • ST. THOMAS, ONTARIO, CANADA Printed in U.S.A.

©Copyright by the Gorman-Rupp Company

# 13D-L60E

S/N 1144428 UP

PUMP ISSUE 2

ITEM NO.	PART NAME	PART NUMBER	MAT'L CODE	QTY	ITEM NO.	PART NAME	PART NUMBER	MAT'L CODE	QTY
1	PUMP CASING	13304	13040	1	23	LOCKWASHER	21171-510	---	4
2 *	IMPELLER	13303H	11060	1	24 *	INTERMEDIATE O-RING	25152-248	---	1
3	FILL PLUG ASSY	48271-063	---	1	25 *	WEAR PLATE	2643B	15990	1
4	DISCHARGE FLANGE	13427	13040	1	26	CASING DRAIN PLUG	P06	15079	1
5	ST ELBOW	RS48	11999	1	27	LOCKWASHER	J04	15991	2
6	STUD	C0807	15991	2	28	HEX NUT	D04	15991	2
7	HEX NUT	D08	15991	2	29	STUD	C0808	15991	2
8 *	SEAL ASSY	46521-014	---	1	30	FLAT WASHER	K08	15991	2
9 *	IMP ADJ SHIM SET	2X	17090	REF	31	COVER WING NUT	BB08	15991	2
10 *	SEAL LINER	83	14080	REF	32	COVER PLATE ASSY	42111-919	---	1
11 *	DISCH FLANGE GSKT	13428	20000	1	33	-WARNING PLATE	2613EV	13990	1
12	NAME PLATE	38818-021	13990	1	34	-DRIVE SCREW	BM#04-03	17000	4
13	DRIVE SCREW	BM#04-03	17000	4	35	-BACK COVER PLATE	NOT AVAILABLE		1
14	GREASE CUP	S36	---	1	36 *	COVER PLATE GSKT	12369G	20000	1
15	45° ELBOW	AG04	11999	1	37	SUCTION FLANGE	13425	13040	1
16	PIPE NIPPLE	T0414	15079	1	38	STUD	C0807	15991	2
17	45° STREET ELBOW	AGS04	11999	1	39	HEX NUT	D08	15991	2
18	INTERMEDIATE	38264-222	13040	1	40	CHECK VALVE ASSY	13426	---	1
19	STUD	C0808	15991	2					
20	FLAT WASHER	K08	15991	2					
21	HEX NUT	D08	15991	2					
22	HEX HD CAPSCREW	22645-135	---	4					
					NOT SHOWN:				
					STRAINER	2690	24000		1

\* INDICATES PARTS RECOMMENDED FOR STOCK

## THE GORMAN-RUPP COMPANY • MANSFIELD, OHIO

GORMAN-RUPP OF CANADA LIMITED • ST. THOMAS, ONTARIO, CANADA Printed in U.S.A.

©Copyright by the Gorman-Rupp Company

**For U.S. and International Warranty Information,  
Please Visit [www.grpumps.com/warranty](http://www.grpumps.com/warranty)**

**or call:**

**U.S.: 419-755-1280**

**International: +1-419-755-1352**

**For Canadian Warranty Information,  
Please Visit [www.grcanada.com/warranty](http://www.grcanada.com/warranty)**

**or call:**

**519-631-2870**

**THE GORMAN-RUPP COMPANY • MANSFIELD, OHIO**

**GORMAN-RUPP OF CANADA LIMITED • ST. THOMAS, ONTARIO, CANADA**