

Use With: OM-04402  
MR-04717

PUBLICATION NUMBER PL-04750-01  
March 11, 1997  
Rev. B 10/16/01



***PRIME-AIRE***<sup>™</sup> **SERIES**  
**PUMP MODEL**  
**PA12A60-B-BF6L-A**

**MANUAL**  
**PART 2 of 3**

**PARTS**  
**LIST**  
**WITH**  
**PERFORMANCE CURVE**

**THE GORMAN-RUPP COMPANY • MANSFIELD, OHIO**

**GORMAN-RUPP OF CANADA LIMITED • ST. THOMAS, ONTARIO, CANADA** Printed in U.S.A.

©Copyright by the Gorman-Rupp Company



The engine exhaust from this product contains chemicals known to the State of California to cause cancer, birth defects or other reproductive harm.

## PERFORMANCE CURVE – SECTION A

### RECORDING MODEL AND SERIAL NUMBERS

Please record the pump model and serial number in the spaces provided below and in the separate Installation/Operation Manual accompanying your pump. Your Gorman-Rupp distributor needs this information when you require parts or service.

Pump Model: \_\_\_\_\_

Serial Number: \_\_\_\_\_

### WARRANTY INFORMATION

The pump warranty is provided as part of Gorman-Rupp's support program for customers who operate and maintain their equipment as described in this manual and other accompanying literature. Please note that should the equipment be abused or modified to change its performance beyond the original factory specifications, the warranty will become void and any claim will be denied.

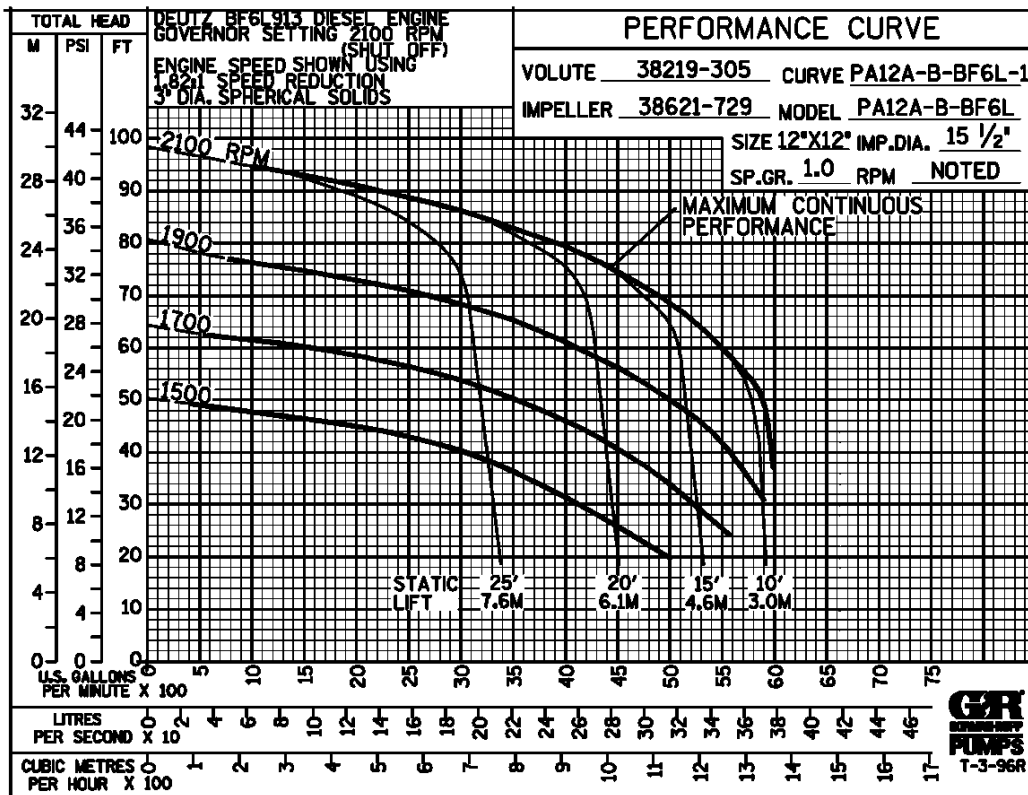
### PERFORMANCE CURVE

The performance curve on the following page is based on 70° F (21° C) clear water at sea level, with minimum suction lift. Since pump installations are seldom identical, your performance may be different due to such factors as viscosity, specific gravity, elevation, temperature, and impeller trim.

If your pump serial number is followed by an "N", your pump is **NOT** a standard production model. Contact the Gorman-Rupp Company to verify performance or part numbers.

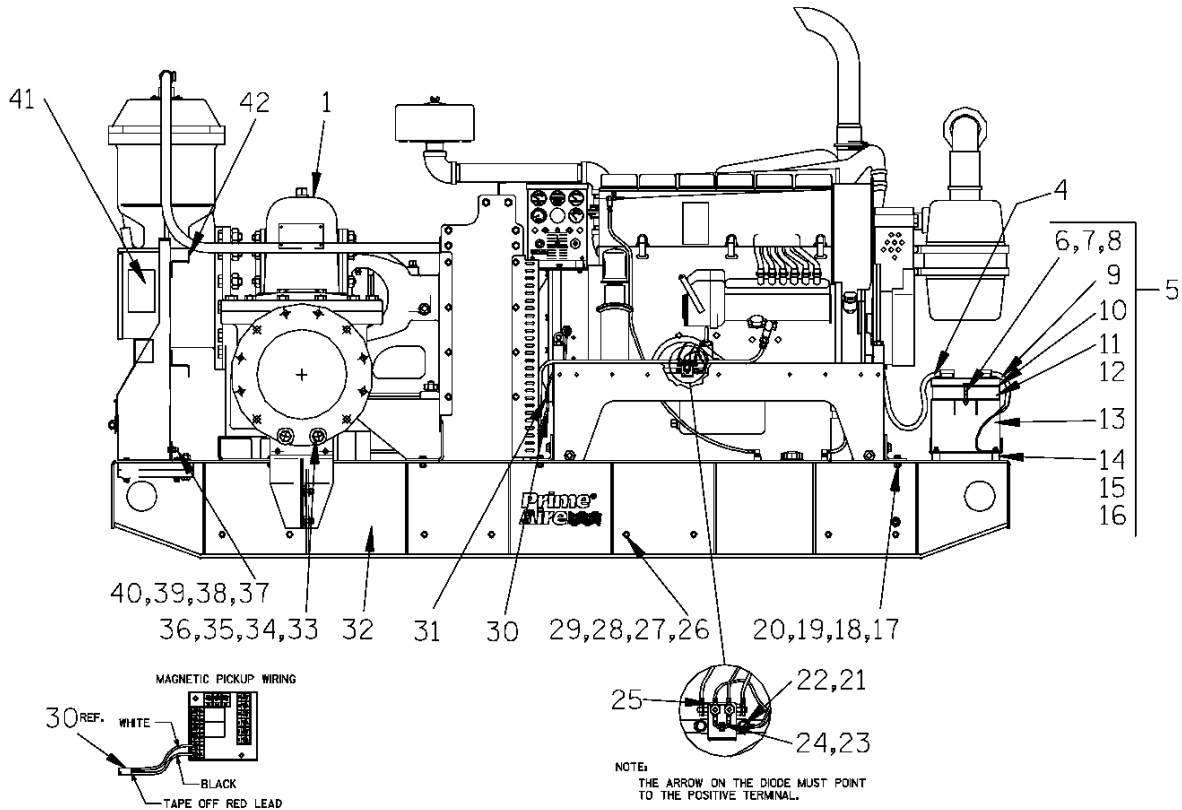
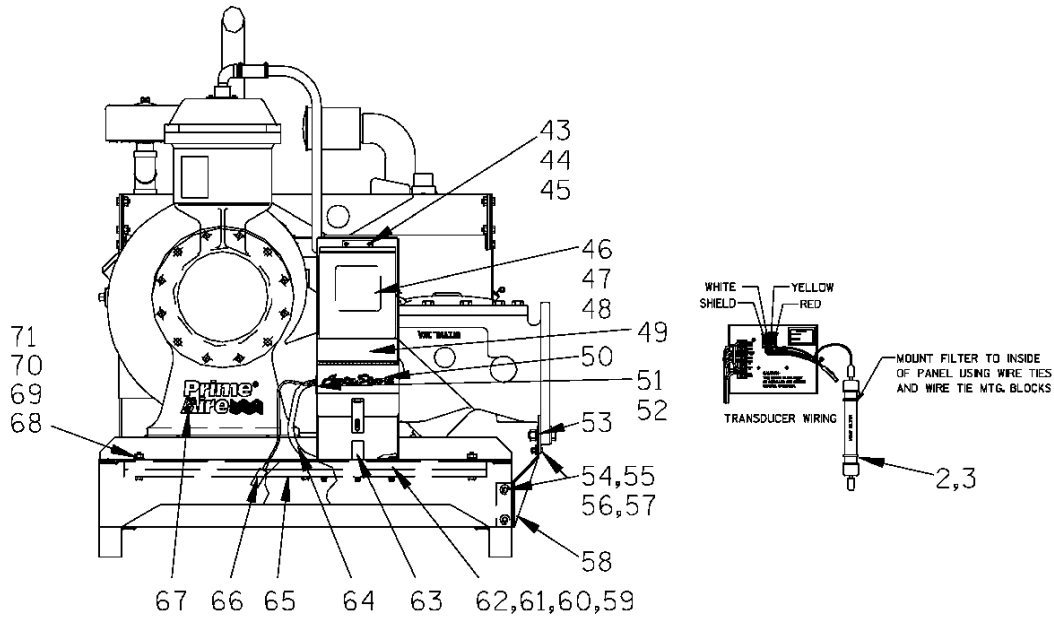


Pump speed and operating condition points must be within the continuous performance range shown on the curve.



Performance Curve – Model PA12A60-B-BF6L-A

**This Page Intentionally Blank**



**THE GORMAN-RUPP COMPANY • MANSFIELD, OHIO**

S/N 1204168 Up  
PUMP ISSUE 1

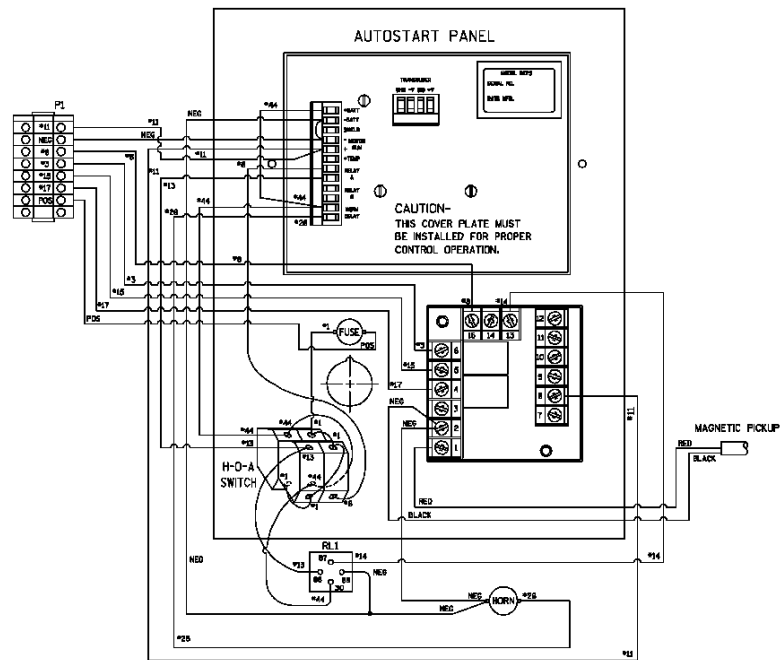
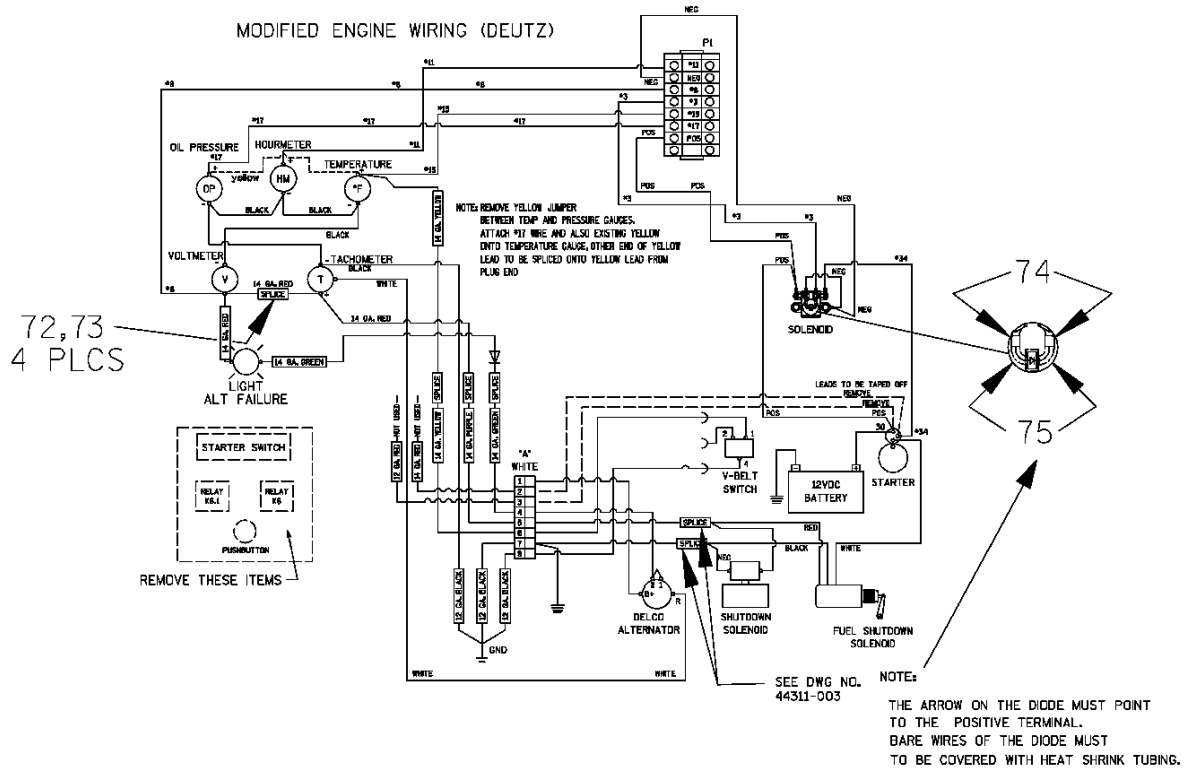
**PARTS LIST**  
**Pump Model PA12A60-B-BF6L-A**

If your pump serial number is followed by an "N", your pump is **NOT** a standard production model. Contact the Gorman-Rupp Company to verify part numbers.

| ITEM NO. | PART NAME           | PART NUMBER  | MAT'L CODE | QTY | ITEM NO.   | PART NAME              | PART NUMBER | MAT'L CODE | QTY |
|----------|---------------------|--------------|------------|-----|------------|------------------------|-------------|------------|-----|
| 1        | PUMP SUB-ASSEMBLY   | 46133-915    | ---        | 1   | 42         | 8" HEAT SHRINK TUBING  | 18763-074   | ---        | 1   |
| 2        | CABLE TIE           | 27111-202    | ---        | 2   | 43         | HEX LOCKNUT            | BC#10       | 15991      | 4   |
| 3        | MOUNTING BLOCK      | 27111-352    | ---        | 2   | 44         | FLAT WASHER            | K#10        | 15991      | 4   |
| 4        | POS BATTERY CABLE   | 47311-118    | ---        | 1   | 45         | HEX HD CAPSCREW        | X#10-02     | 15991      | 4   |
| 5        | BATTERY BOX ASSY    | GRP40-08C    | ---        | 1   | 46         | CONTROL BOX ASSY       | 47651-093   | ---        | 1   |
| 6        | -HEX HD CAPSCREW    | B0607        | 15991      | 2   | 47         | GR LOGO DECAL          | GR06        | ---        | 1   |
| 7        | -FLAT WASHER        | K06          | 15991      | 2   | 48         | INSTRUCTION DECAL      | 38818-136   | ---        | 1   |
| 8        | -FLANGED HEX NUT    | 21765-314    | ---        | 2   | 49         | CONTROL MTG STAND      | 41881-537   | 24150      | 1   |
| 9 *      | -GRD CABLE ASSY     | 47311-064    | ---        | 1   | 50         | AUTOSTART DECAL        | 38818-086   | ---        | 1   |
| 10       | -BATTERY BOX LID    | 42113-012    | 24150      | 1   | 51         | FIBER BUSHING          | 27137-508   | ---        | 1   |
| 11       | -12V BATTERY        | SEE OPTIONS: |            |     | 52         | CONDUIT LOCKNUT        | 27185-007   | ---        | 1   |
| 12       | -BATTERY TAG        | 38818-506    | ---        | 1   | 53         | CHK VALVE SUPPORT      | 33643-131   | 15080      | 1   |
| 13       | -BATTERY BOX ASSY   | 42431-030    | 24150      | 1   | 54         | HEX HD CAPSCREW        | B0705       | 15991      | 4   |
| 14       | -STUD MOUNT         | 24631-006    | ---        | 4   | 55         | LOCKWASHER             | J07         | 15991      | 4   |
| 15       | -FLANGED HEX NUT    | 21765-314    | ---        | 8   | 56         | FLAT WASHER            | K07         | 15991      | 6   |
| 16       | -T-TYPE LOCKWASHER  | BL06         | 15991      | 1   | 57         | HEX NUT                | D07         | 15991      | 4   |
| 17       | HEX HD CAPSCREW     | B0806        | 15991      | 11  | 58         | CHK VALVE BRKT ASSY    | 41881-604   | 24150      | 1   |
| 18       | FLAT WASHER         | 21161-501    | ---        | 11  | 59         | HEX HD CAPSCREW        | B0612       | 15991      | 3   |
| 19       | LOCKWASHER          | J08          | 15991      | 11  | 60         | LOCKWASHER             | J06         | 15991      | 3   |
| 20       | HEX NUT             | D08          | 15991      | 11  | 61         | FLAT WASHER            | K06         | 15991      | 3   |
| 21       | SOLENOID            | 27422-003    | ---        | 1   | 62         | HEX NUT                | D06         | 15991      | 3   |
| 22       | DIODE               | 27761-003    | ---        | 1   | 63         | MTG BRACKET            | 34123-019   | 15120      | 1   |
| 23       | SPIRAL WRAP 3" LONG | 18763-003    | ---        | 1   | 64         | WIRING HARNESS         | 47381-038   | ---        | 1   |
| 24       | MM8 X 12 CAPSCREW   | 22645-127    | ---        | 2   | 65         | COUNTERWEIGHT PLATE    | 33643-119   | 15080      | 2   |
| 25       | LOCKWASHER          | 21171-510    | ---        | 2   | 66         | 50' TRANSDUCER         | 27788-182   | ---        | 1   |
| 26       | HEX HD CAPSCREW     | B0808        | 15991      | 16  | 67         | PRIME AIRE DECAL       | 38812-078   | ---        | 3   |
| 27       | FLAT WASHER         | 21161-501    | ---        | 32  | 68         | HEX HD CAPSCREW        | B0813       | 15991      | 6   |
| 28       | LOCKWASHER          | J08          | 15991      | 16  | 69         | HEX NUT                | D08         | 15991      | 6   |
| 29       | HEX NUT             | D08          | 15991      | 16  | 70         | LOCKWASHER             | J08         | 15991      | 6   |
| 30       | MAG PICKUP CABLE    | 27417-921    | ---        | 1   | 71         | FLAT WASHER            | K08         | 15991      | 6   |
| 31       | CLIP                | 6006         | 15990      | 1   | 72         | BUTT SPLICE 16-14      | 27284-302   | ---        | 4   |
| 32       | SKID ASSY           | 41565-569    | 24150      | 1   | 73         | 2.5" HEAT SHRK TUBING  | 18763-245   | ---        | 1   |
| 33       | HEX HD CAPSCREW     | B1412        | 15991      | 2   | 74         | RING TERM 16-14 #10    | 27214-515   | ---        | 2   |
| 34       | FLAT WASHER         | K14          | 15991      | 4   | 75         | 1.25" HEAT SHRK TUBING | 18763-245   | ---        | 1   |
| 35       | LOCKWASHER          | J14          | 15991      | 2   | NOT SHOWN: |                        |             |            |     |
| 36       | HEX NUT             | D14          | 15991      | 2   |            | STRAINER               | 46641-012   | 24150      | 1   |
| 37       | HEX HD CAPSCREW     | B0603        | 15991      | 1   |            | CABLE TIE              | 27111-218   | ---        | 1   |
| 38       | LOCKWASHER          | J06          | 15991      | 1   |            | #16-14 BUTT CNNCTOR    | 27284-202   | ---        | 1   |
| 39       | FLAT WASHER         | K06          | 15991      | 1   | OPTIONS:   |                        |             |            |     |
| 40       | HEX NUT             | D06          | 15991      | 1   |            | * 12V BATTERY          | 29331-506   | ---        | 1   |
| 41       | WARNING DECAL       | 38816-203    | ---        | 3   |            |                        |             |            |     |

\* INDICATES PARTS RECOMMENDED FOR STOCK

**THE GORMAN-RUPP COMPANY • MANSFIELD, OHIO**



**PA12A60-B-BF6L-A**

**ACDE**

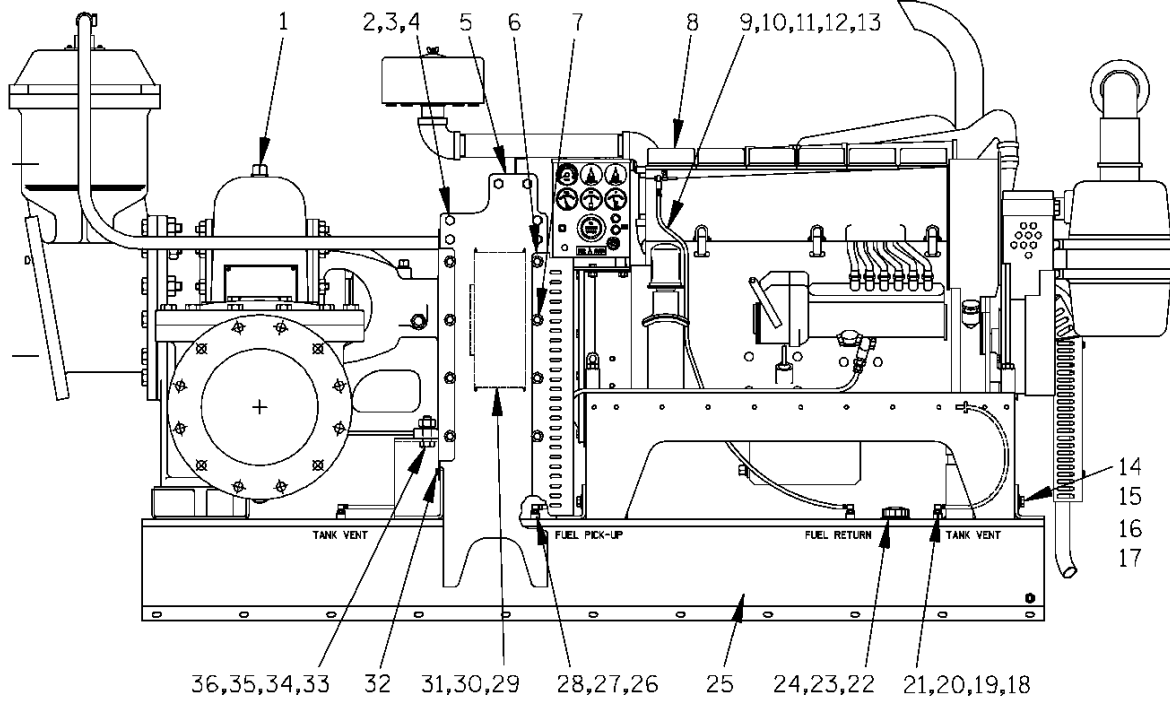
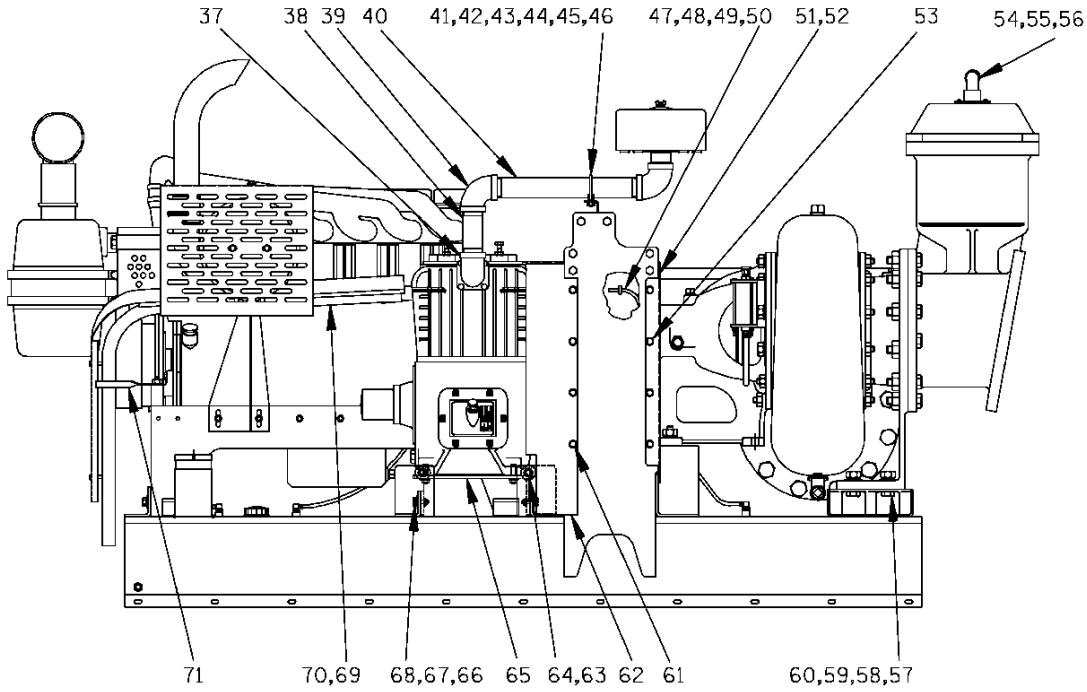
**S/N 1204168 Up  
PUMP ISSUE 1**

**PARTS LIST  
Pump Model**

| ITEM NO. | PART NAME             | PART NUMBER | MAT'L CODE | QTY | ITEM NO. | PART NAME              | PART NUMBER | MAT'L CODE | QTY |
|----------|-----------------------|-------------|------------|-----|----------|------------------------|-------------|------------|-----|
| 72       | BUTT SPLICE 16-14     | 27284-302   | ---        | 4   | 74       | RING TERM 16-14 #10    | 27214-515   | ---        | 2   |
| 73       | 2.5" HEAT SHRK TUBING | 18763-245   | ---        | 1   | 75       | 1.25" HEAT SHRK TUBING | 18763-245   | ---        | 1   |

\* INDICATES PARTS RECOMMENDED FOR STOCK

**THE GORMAN-RUPP COMPANY • MANSFIELD, OHIO**



**THE GORMAN-RUPP COMPANY • MANSFIELD, OHIO**

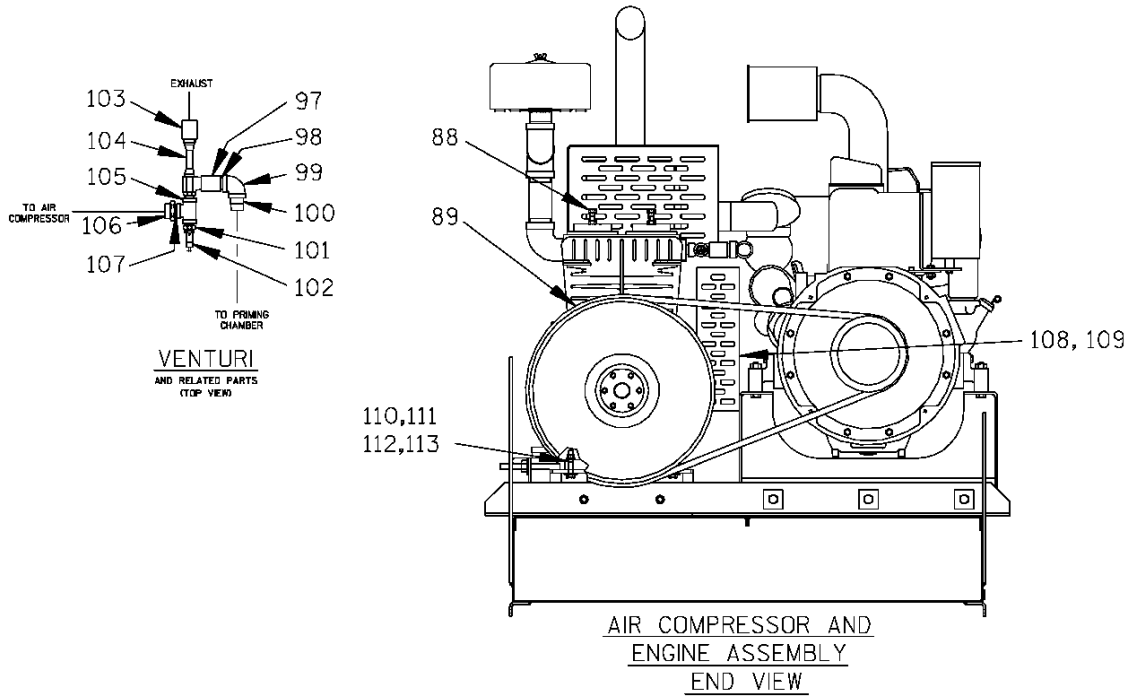
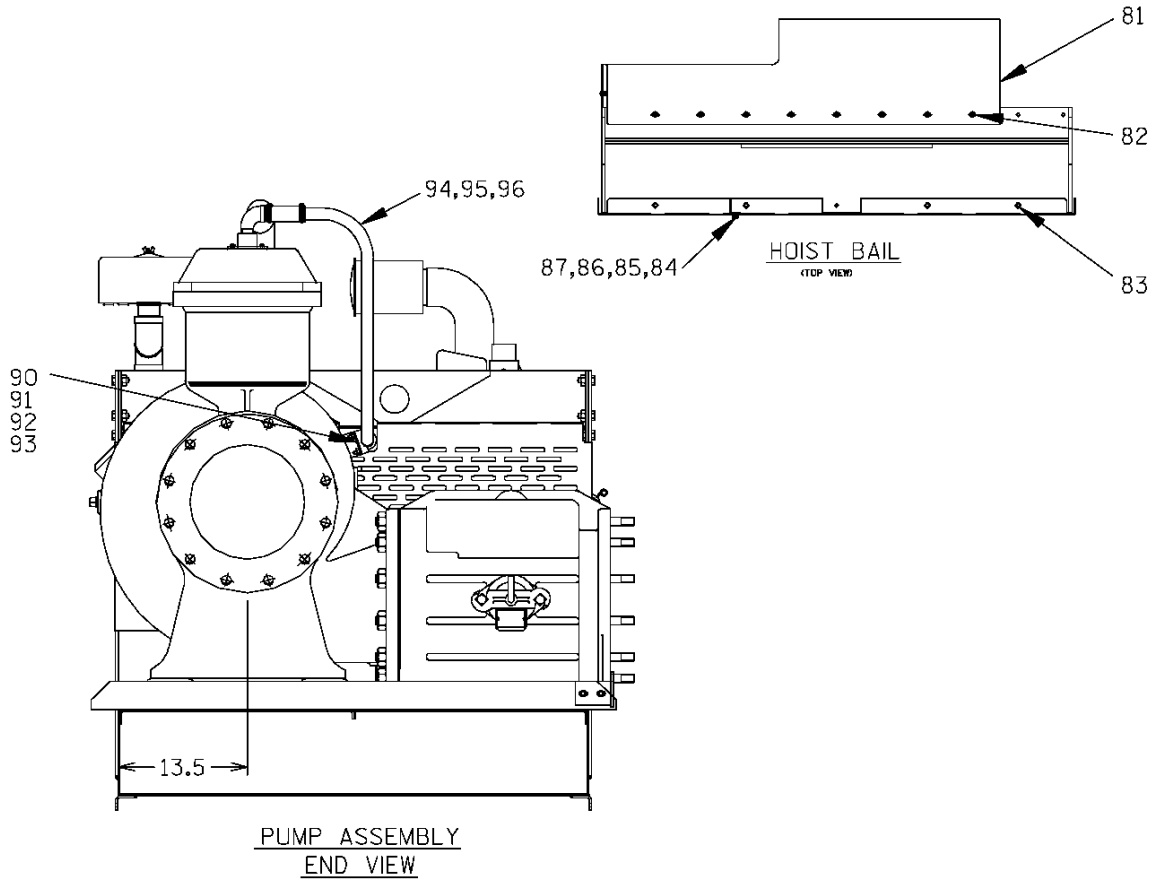
S/N 1204168 Up  
PUMP ISSUE 1

**PARTS LIST**  
**Pump Sub-Assembly**

| ITEM NO. | PART NAME          | PART NUMBER | MAT'L CODE | QTY | ITEM NO. | PART NAME          | PART NUMBER | MAT'L CODE | QTY |
|----------|--------------------|-------------|------------|-----|----------|--------------------|-------------|------------|-----|
| 1        | PUMP ASSEMBLY      | PA12A60-B   | ---        | 1   | 36       | FLAT WASHER        | K12         | 15991      | 2   |
| 2        | HEX HD CAPSCREW    | B0806       | 15991      | 12  | 37       | STREET ELBOW       | RS32        | 11999      | 1   |
| 3        | LOCKWASHER         | J08         | 15991      | 12  | 38       | PIPE NIPPLE        | T3224       | 15079      | 1   |
| 4        | HEX NUT            | D08         | 15991      | 12  | 39       | PIPE ELBOW         | R32         | 11999      | 2   |
| 5        | HOIST BAIL         | 44718-027   | ---        | 1   | 40       | PIPE NIPPLE        | T3272       | 15079      | 1   |
| 6        | GUARD-ENGINE SIDE  | 34266-007   | 15120      | 1   | 41       | PIPE SUPPORT BRKT  | 34265-032   | 15120      | 1   |
| 7        | FLNGE HD CAPSCREW  | 21634-515   | ---        | 12  | 42       | MUFFLER CLAMP      | 29334-261   | ---        | 1   |
| 8        | ENGINE MOD ASSY    | 44311-008   | ---        | 1   | 43       | HEX HD CAPSCREW    | B0805       | 15991      | 1   |
| 9        | FUEL LINE          | 11308K      | ---        | 1   | 44       | HEX NUT            | D08         | 15991      | 1   |
| 10       | HOSE CLAMP         | 26518-641   | ---        | 2   | 45       | LOCKWASHER         | J08         | 15991      | 1   |
| 11       | HOSE BARB FITTING  | 26523-443   | ---        | 1   | 46       | FLAT WASHER        | K08         | 15991      | 1   |
| 12       | MALE CONNECTOR     | 26523-463   | ---        | 1   | 47       | FUEL LINE          | 11308F      | ---        | 1   |
| 13       | REDUCER BUSHING    | AP0604      | 15079      | 1   | 48       | HOSE CLAMP         | 26518-641   | ---        | 1   |
| 14       | HEX HD CAPSCREW    | B0807       | 15991      | 6   | 49       | MALE CONNECTOR     | 26523-463   | ---        | 1   |
| 15       | LOCKWASHER         | J08         | 15991      | 6   | 50       | REDUCER BUSHING    | AP0604      | 15079      | 1   |
| 16       | SQUARE WASHER      | 21168-025   | ---        | 6   | 51       | GUARD-PUMP END     | 34266-021   | 15120      | 1   |
| 17       | SHIM SET           | 48261-045   | ---        | 1   | 52       | GUARD-PUMP END     | 34266-022   | 15120      | 1   |
| 18       | FUEL LINE          | 11308F      | ---        | 1   | 53       | FLANGE HD CAPSCREW | 21634-515   | ---        | 8   |
| 19       | HOSE CLAMP         | 26518-641   | ---        | 1   | 54       | PIPE NIPPLE        | T16         | 15079      | 1   |
| 20       | MALE CONNECTOR     | 26523-463   | ---        | 1   | 55       | STREET ELBOW       | RS16        | 11999      | 1   |
| 21       | REDUCER BUSHING    | AP0604      | 15079      | 1   | 56       | REDUCER BUSHING    | AP2016      | 11999      | 1   |
| 22       | FLANGE W/GSKT      | 29332-151   | ---        | 1   | 57       | HEX HD CAPSCREW    | B1211       | 15991      | 4   |
| 23       | FUEL GAUGE         | 29332-132   | ---        | 1   | 58       | HEX NUT            | D12         | 15991      | 4   |
| 24       | #10 TAPSCREW       | 21281-444   | ---        | 6   | 59       | LOCKWASHER         | J12         | 15991      | 4   |
| 25       | FUEL TANK ASSY     | 46711-068   | ---        | 1   | 60       | FLAT WASHER        | K12         | 15991      | 4   |
| 26       | FUEL PICKUP        | 29332-142   | ---        | 1   | 61       | FLANGE HD CAPSCREW | 21634-515   | ---        | 8   |
| 27       | HOSE ASSY          | 46341-796   | ---        | 1   | 62       | GUARD-FLYWHEEL     | 34518-016   | 15120      | 1   |
| 28       | MALE CONNECTOR     | S1447       | ---        | 1   | 63       | HEX NUT            | D10         | 15991      | 4   |
| 29 *     | PUMP DRIVE BELT    | 24154-001   | ---        | 1   | 64       | FLAT WASHER        | K10         | 15991      | 4   |
| 30       | SPROCKET           | 24271-003   | ---        | 1   | 65       | A/C MTG BRKT       | 41881-529   | 24150      | 1   |
| 31       | BUSHING            | 24131-535   | ---        | 1   | 66       | HEX HD CAPSCREW    | B0606       | 15991      | 4   |
| 32       | FLANGE HD CAPSCREW | 21634-505   | ---        | 5   | 67       | LOCKWASHER         | J06         | 15991      | 4   |
| 33       | HEX HD CAPSCREW    | B1211       | 15991      | 2   | 68       | SQUARE WASHER      | 21168-023   | ---        | 4   |
| 34       | HEX NUT            | D12         | 15991      | 2   | 69       | EXH PIPE ASSY      | 46241-511   | ---        | 1   |
| 35       | LOCKWASHER         | J12         | 15991      | 2   | 70       | MUFFLER CLAMP      | 29334-254   | ---        | 2   |
|          |                    |             |            |     | 71       | EXH PIPE BRKT      | 34877-022   | 15120      | 1   |

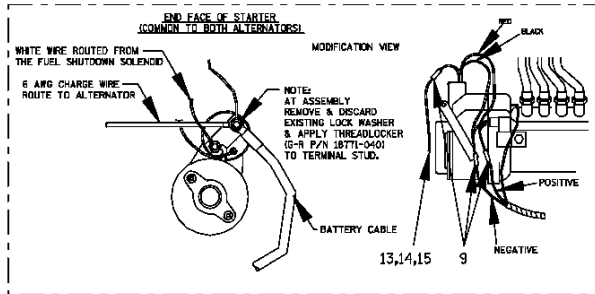
\* INDICATES PARTS RECOMMENDED FOR STOCK

S/N 1204168 Up  
PUMP ISSUE 1

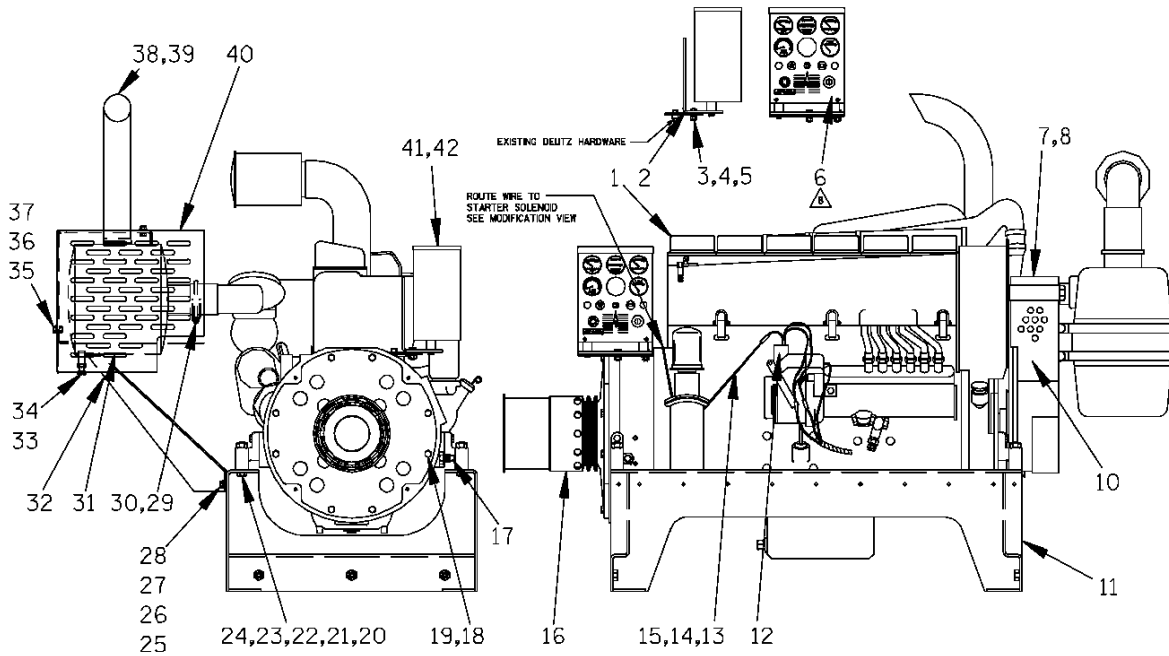
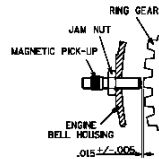


**THE GORMAN-RUPP COMPANY • MANSFIELD, OHIO**





MAGNETIC PICK-UP DETAIL

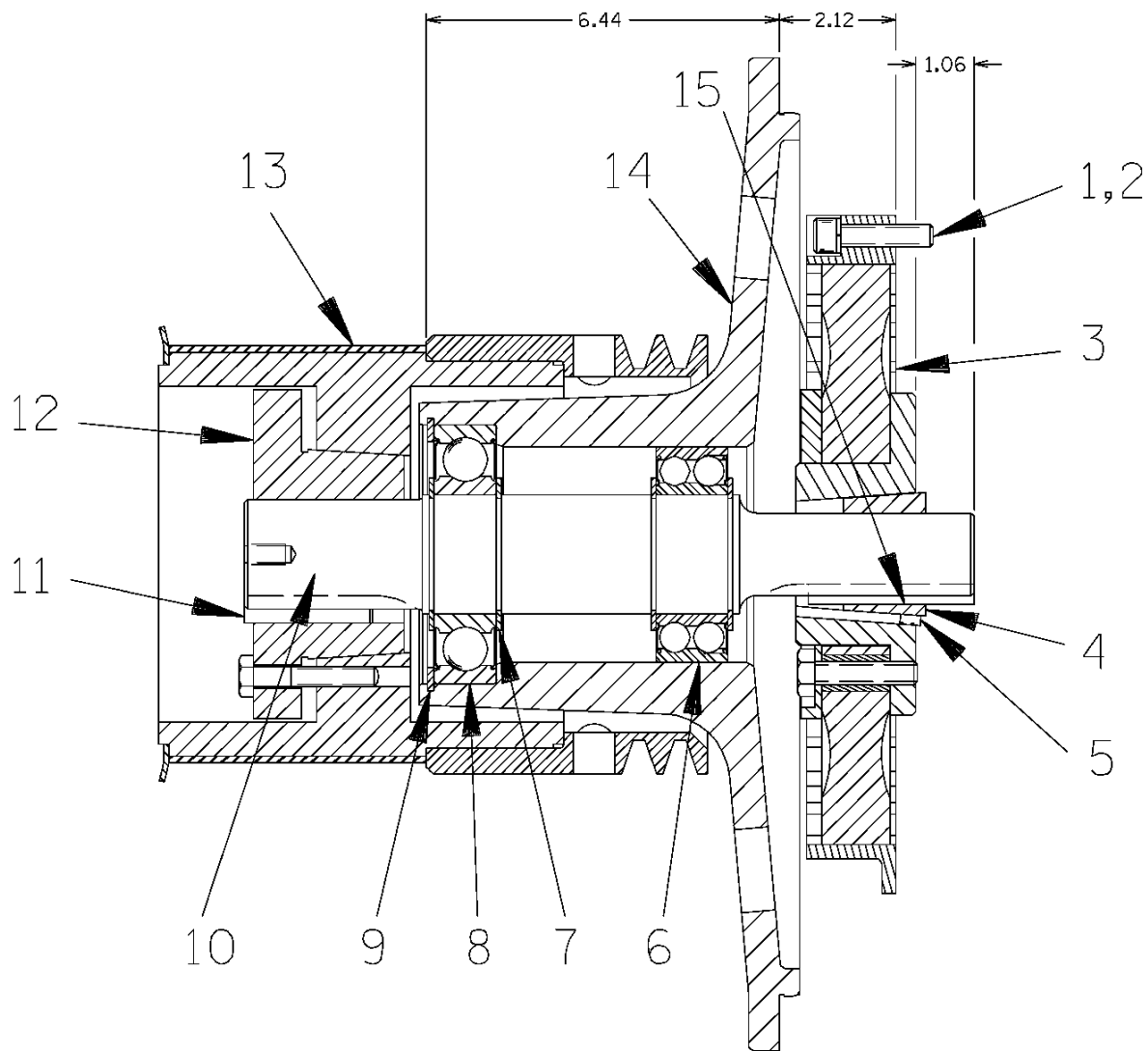


S/N 1204168 Up  
PUMP ISSUE 1

**PARTS LIST**  
**Engine Modification Assembly**

| ITEM NO. | PART NAME             | PART NUMBER | MAT'L CODE | QTY | ITEM NO. | PART NAME          | PART NUMBER | MAT'L CODE | QTY |
|----------|-----------------------|-------------|------------|-----|----------|--------------------|-------------|------------|-----|
| 1        | DEUTZ BF6L ENGINE     | 29217-101   | ---        | 1   | 22       | HEX NUT            | D08         | 15991      | 3   |
| 2        | CTRL PANEL MTG PLT    | 33273-158   | 15120      | 1   | 23       | DEFORM LOCKNUT     | DD08        | 15991      | 1   |
| 3        | HEX HD CAPSCREW       | B0604       | 15991      | 2   | 24       | FLAT WASHER        | K08         | 15991      | 1   |
| 4        | LOCK WASHER           | J06         | 15991      | 2   | 25       | HEX HD CAPSCREW    | B0604 1/2   | 15991      | 2   |
| 5        | HEX NUT               | D06         | 15991      | 2   | 26       | LOCKWASHER         | J06         | 15991      | 2   |
| 6        | DEUTZ CONTROL PANEL   | 29277-012   | ---        | 1   | 27       | FLAT WASHER        | K06         | 15991      | 2   |
| 7        | ALT FAN GUARD CAP     | 42353-952   | 24150      | 1   | 28       | HEX NUT            | D06         | 15991      | 2   |
| 8        | POP RIVET             | 21122-153   | ---        | 2   | 29       | MUFFLER CLAMP      | 29334-264   | ---        | 1   |
| 9        | BUTT CONNECTOR        | 27284-202   | ---        | 3   | 30       | MANIFOLD PIPE ASSY | 46281-005   | 24150      | 1   |
| 10       | V-BELT GUARD ASSY     | 29277-141   | ---        | 1   | 31       | MUFFLER ASSY       | 46211-027   | 24150      | 1   |
| 11       | PEDESTAL MTG BRKT     | 41414-012   | ---        | 1   | 32       | SUPPORT BRKT ASSY  | 41824-009   | 24150      | 1   |
| 12       | SHUTDOWN KIT          | 29331-432   | ---        | 1   | 33       | HEX HD CAPSCREW    | B0807       | 15991      | 3   |
| 13       | #16 GA WHITE WIRE 41" | 18125-011   | ---        | 1   | 34       | HEX JAM NUT        | AT08        | 15991      | 3   |
| 14       | RING TERMINAL         | 27214-518   | ---        | 1   | 35       | HEX HD CAPSCREW    | B0603       | 15991      | 3   |
| 15       | CABLE TIE             | 27111-207   | ---        | 8   | 36       | LOCKWASHER         | J06         | 15991      | 1   |
| 16       | DRIVE ASSY            | 44162-152   | ---        | 1   | 37       | FLAT WASHER        | K06         | 15991      | 1   |
| 17       | MAGNETIC PICKUP       | 27417-901   | ---        | 1   | 38       | MUFFLER CLAMP      | 29334-264   | ---        | 1   |
| 18       | HEX HD CAPSCREW       | 22645-164   | ---        | 8   | 39       | EXHAUST PIPE       | 31911-004   | 15000      | 1   |
| 19       | LOCKWASHER            | 21171-511   | ---        | 8   | 40       | MUFFLER GRD ASSY   | 42331-045   | 24150      | 1   |
| 20       | HEX HD CAPSCREW       | B0814       | 15991      | 3   | 41       | CAUTION DECAL      | 2613FJ      | ---        | 1   |
| 21       | LOCKWASHER            | J08         | 15991      | 3   | 42       | WARNING DECAL      | 2613FE      | ---        | 1   |

\* INDICATES PARTS RECOMMENDED FOR STOCK



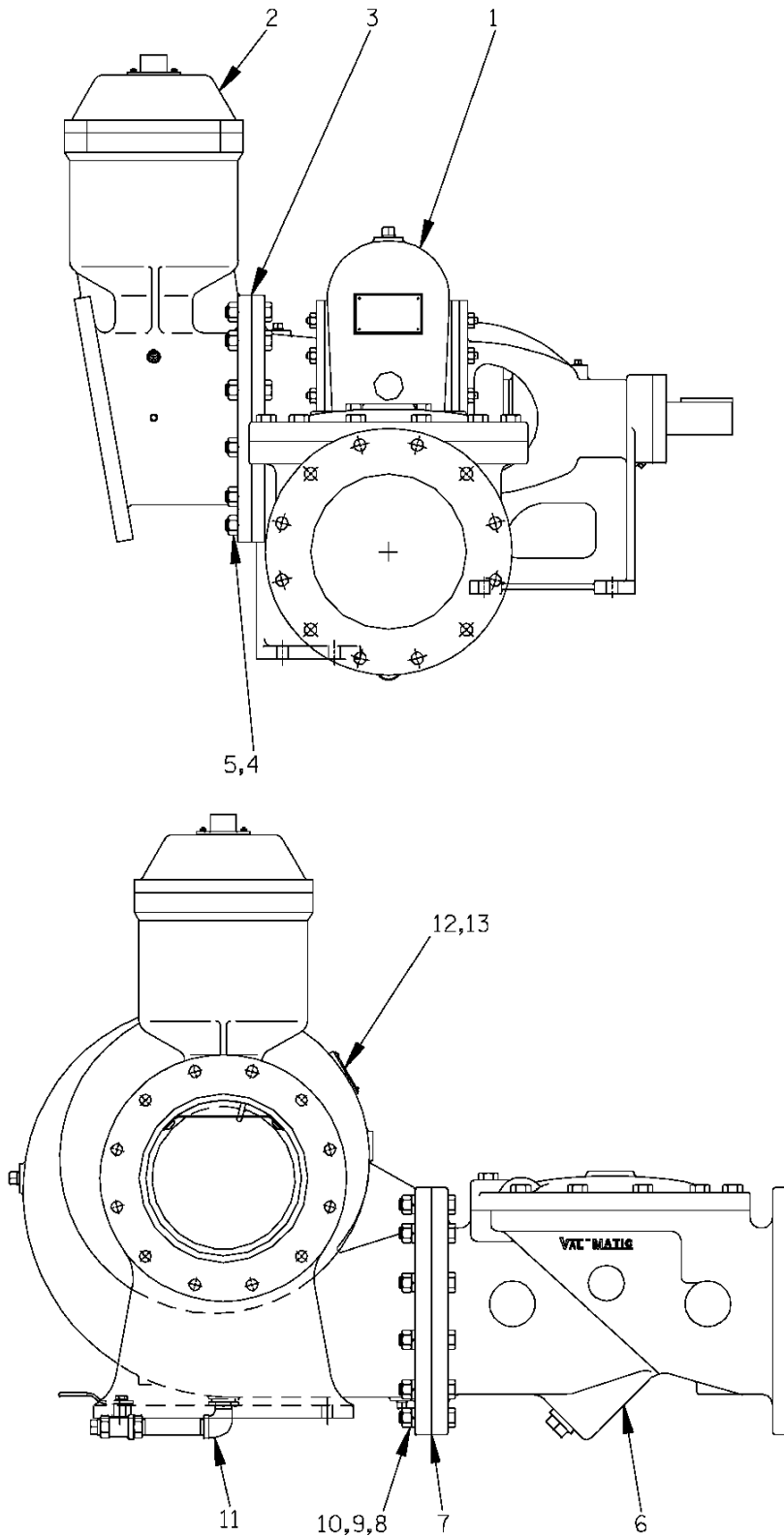
**THE GORMAN-RUPP COMPANY • MANSFIELD, OHIO**

S/N 1204168 Up  
PUMP ISSUE 1

**PARTS LIST**  
**Engine Drive Assembly**

| ITEM NO. | PART NAME                       | PART NUMBER | MAT'L CODE | QTY |
|----------|---------------------------------|-------------|------------|-----|
| 1        | SOCKET HEAD CAPSCREW            | 22644-220   | ---        | 8   |
| 2        | LOCKWASHER                      | 21171-536   | ---        | 8   |
| 3        | * COUPLING W/O BUSHING          | 24391-103   | ---        | 1   |
| 4        | * TAPERLOCK BUSHING             | 24131-496   | ---        | 1   |
| 5        | ALLEN HD SETSCREW               | GA0703 1/2  | 15990      | 2   |
| 6        | * BALL BEARING                  | 23431-012   | ---        | 1   |
| 7        | RETAINING RING                  | S215        | ---        | 4   |
| 8        | * BALL BEARING                  | 23282-012   | ---        | 1   |
| 9        | RETAINING RING                  | 24121-075   | ---        | 1   |
| 10       | OUTPUT SHAFT                    | 38512-051   | 1706H      | 1   |
| 11       | * OUTPUT SHAFT KEY (DRIVE END)  | N0807       | 15990      | 1   |
| 12       | TAPERLOCK BUSHING               | 24131-526   | ---        | 1   |
| 13       | DRIVE SPROCKET                  | 44162-901   | ---        | 1   |
| 14       | BEARING HOUSING                 | 38251-001   | 11010      | 1   |
| 15       | * OUTPUT SHAFT KEY (DRIVEN END) | N0612       | 15990      | 1   |

\* INDICATES PARTS RECOMMENDED FOR STOCK



**THE GORMAN-RUPP COMPANY • MANSFIELD, OHIO**

S/N 1204168 Up  
 PUMP ISSUE 1

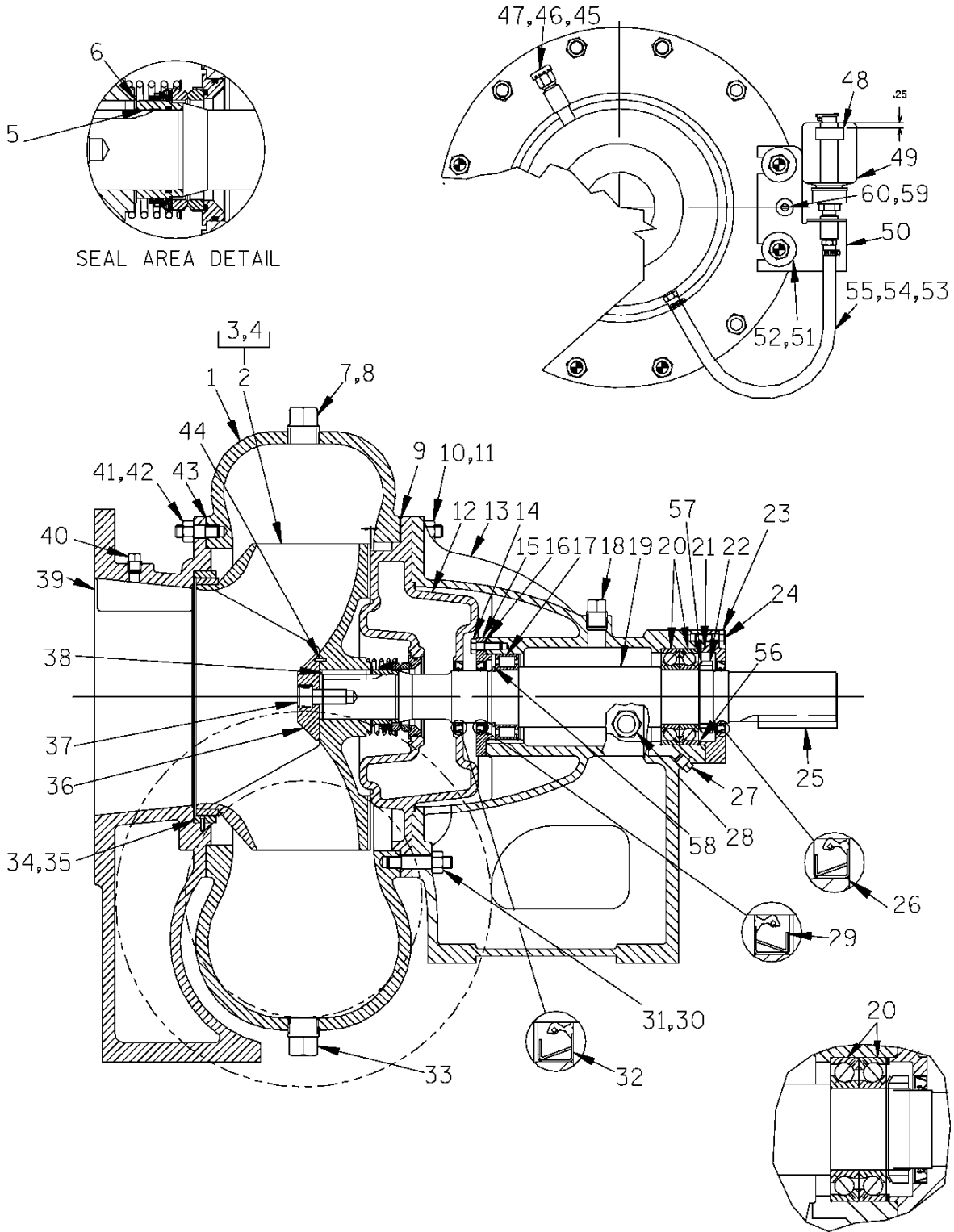
**PARTS LIST**  
**PA12A60-B Pump Model Assembly**

| ITEM NO. | PART NAME            | PART NUMBER | MAT'L CODE | QTY |
|----------|----------------------|-------------|------------|-----|
| 1        | PUMP ASSEMBLY        | 612M60-B    | ---        | 1   |
| 2        | PRIMING CHAMBER ASSY | 46112-701   | ---        | 1   |
| 3        | * FLANGE GASKET      | 4991G       | 18000      | 1   |
| 4        | HEX HEAD CAPSCREW    | B1412       | 15991      | 12  |
| 5        | HEX NUT              | D14         | 15991      | 12  |
| 6        | CHECK VALVE ASSY     | 26642-128   | ---        | 1   |
|          | - FLAPPER            | 26688-003   | ---        | 1   |
|          | - COVER GASKET       | 26688-004   | ---        | 1   |
| 7        | * FLANGE GASKET      | 4991G       | 18000      | 1   |
| 8        | HEX HD CAPSCREW      | B1416       | 15991      | 12  |
| 9        | LOCKWASHER           | J14         | 15991      | 12  |
| 10       | HEX NUT              | D14         | 15991      | 12  |
| 11       | DRAIN VALVE ASSY     | 46346-262   | ---        | 1   |
| 12       | NAME PLATE           | 38818-127   | 13000      | 1   |
| 13       | DRIVE SCREW          | BM#04-03    | 17000      | 4   |

NOT SHOWN:

|          |           |       |   |
|----------|-----------|-------|---|
| STRAINER | 46641-012 | 24150 | 1 |
|----------|-----------|-------|---|

\* INDICATES PARTS RECOMMENDED FOR STOCK



**THE GORMAN-RUPP COMPANY • MANSFIELD, OHIO**

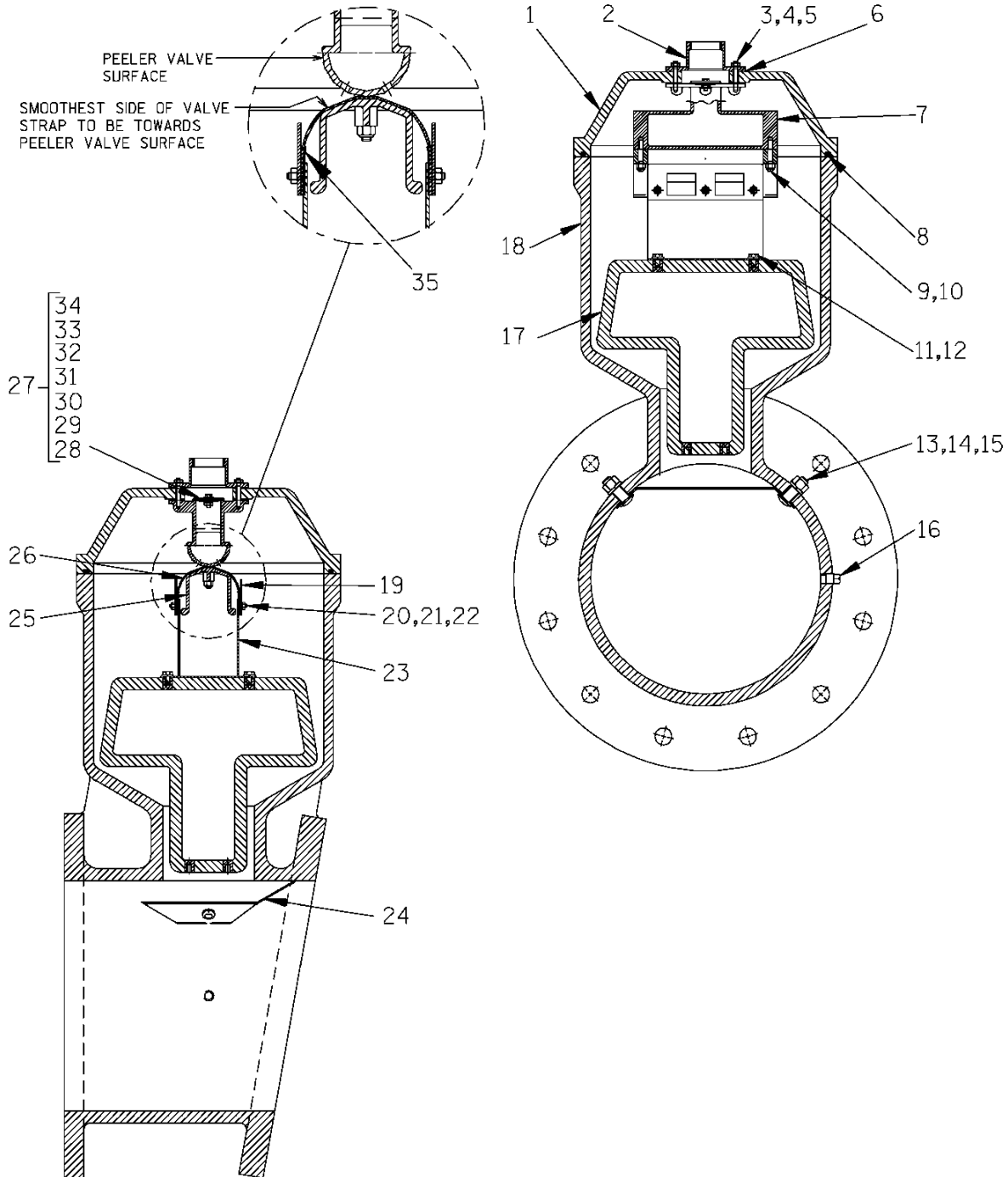
S/N 1204168 Up  
PUMP ISSUE 1

**PARTS LIST**  
**612M60-B Pump Model Assembly**

| ITEM NO. | PART NAME            | PART NUMBER | MAT'L CODE | QTY | ITEM NO.   | PART NAME           | PART NUMBER | MAT'L CODE | QTY |
|----------|----------------------|-------------|------------|-----|------------|---------------------|-------------|------------|-----|
| 1        | VOLUTE CASING        | 38219-305   | 10010      | 1   | 36 *       | IMP WASHER          | 31167-022   | 15030      | 1   |
| 2 *      | IMP & WEAR RING ASSY | 46151-022   | 24110      | 1   | 37         | SOC HD CAPSCREW     | BD1206      | 15990      | 1   |
| 3        | -IMPELLER            | 38621-729   | 11010      | 1   | 38 *       | IMPELLER KEY        | N0809       | 15990      | 1   |
| 4        | -WEAR RING           | 4182A       | 11030      | 1   | 39         | SUCTION HEAD        | 4180        | 10010      | 1   |
| 5 *      | MECHANICAL SEAL      | 46512-109   | ---        | 1   | 40         | PIPE PLUG           | P06         | 15079      | 1   |
| 6 *      | SHIM SET             | 48261-033   | ---        | REF | 41         | STUD                | C1009       | 15991      | 12  |
| 7        | PIPE PLUG            | P12         | 15079      | 2   | 42         | HEX NUT             | D10         | 15991      | 12  |
| 8        | PIPE PLUG            | P06         | 15079      | 1   | 43 *       | SUCTION HEAD GASKET | 4180G       | 18000      | 1   |
| 9 *      | VOLUTE CASING GSKT   | 38674-434   | 18000      | 1   | 44         | ROLL PIN            | S2197       | ---        | 1   |
| 10       | STUD                 | C1011       | 15991      | 7   | 45         | AIR VENT            | S1703       | ---        | 1   |
| 11       | HEX NUT              | D10         | 15991      | 7   | 46         | PIPE NIPPLE         | T0608       | 15079      | 1   |
| 12       | SEAL PLATE           | 38272-713   | 10010      | 1   | 47         | PIPE COUPLING       | AE06        | 15079      | 1   |
| 13       | PEDESTAL             | 38257-520   | 10000      | 1   | 48         | OIL LEVEL DECAL     | 38816-123   | ---        | 1   |
| 14       | HEX HD CAPSCREW      | B0605       | 15991      | 6   | 49         | BOTTLE OILER        | 26713-004   | ---        | 1   |
| 15       | INBOARD BEARING CAP  | 38322-425   | 10010      | 1   | 50         | OILER BRACKET ASSY  | 41881-618   | 24150      | 1   |
| 16 *     | BEARING CAP GASKET   | 4184G       | 18000      | 1   | 51         | FLAT WASHER         | K10         | 15991      | 2   |
| 17 *     | ROLLER BEARING       | 23528-005   | ---        | 1   | 52         | LOCK WASHER         | J10         | 15991      | 2   |
| 18       | VENTED PIPE PLUG     | 38649-009   | 15079      | 1   | 53         | MALE CONNECTOR      | 26523-409   | ---        | 2   |
| 19 *     | IMPELLER SHAFT       | 38512-522   | 17040      | 1   | 54         | HOSE 3/8 X 11' LG   | 18513-054   | ---        | 1   |
| 20 *     | OUTBRD BALL BEARING  | 23413-015   | ---        | 2   | 55         | HOSE CLAMP          | 26518-642   | ---        | 2   |
| 21 *     | BRG CAP O-RING       | 25152-249   | ---        | 1   | 56         | BRG ADJ SHIM SET    | 48261-055   | ---        | 1   |
| 22       | BEARING LOCKNUT      | 23962-015   | ---        | 1   | 57         | LOCKING TAB WASHER  | 23962-515   | ---        | 1   |
| 23       | BEARING CAP          | 38322-429   | 10000      | 1   | 58         | RETAINING RING      | 24124-057   | ---        | 1   |
| 24       | HEX HD CAPSCREW      | B0605       | 15991      | 6   | 59         | RD HD MACH SCREW    | X0405       | 15991      | 2   |
| 25 *     | SHAFT KEY            | N1016       | 15990      | 1   | 60         | LOCKWASHER          | J04         | 15991      | 2   |
| 26 *     | BRG CAP OIL SEAL     | 25258-845   | ---        | 1   | NOT SHOWN: |                     |             |            |     |
| 27       | PEDESTAL DRAIN PLUG  | P04         | 15079      | 1   |            | STRAINER            | 46641-012   | 24150      | 1   |
| 28       | SIGHT GAUGE          | S1471       | ---        | 2   |            | INSTRUC PAPER TAG   | 38817-024   | ---        | 1   |
| 29 *     | BRG CAP OIL SEAL     | 25258-845   | ---        | 1   |            | SUCTION DECAL       | 6588AG      | ---        | 1   |
| 30       | STUD                 | C1013       | 15991      | 5   |            | DISCHARGE DECAL     | 6588BJ      | ---        | 1   |
| 31       | HEX NUT              | D10         | 15991      | 5   |            | LUBRICATION DECAL   | 38816-079   | ---        | 2   |
| 32 *     | SEAL PLATE OIL SEAL  | 25258-845   | ---        | 1   |            | ROTATION DECAL      | 2613M       | ---        | 1   |
| 33       | PIPE PLUG            | P24         | 10009      | 1   |            | INSTRUC PAPER TAG   | 38817-011   | ---        | 1   |
| 34 *     | SUCT HEAD WEAR RING  | 4181A       | 10000      | 1   |            | NAME PLATE          | 38818-127   | 13990      | 1   |
| 35       | SPIRAL PIN           | 21137-123   | ---        | 3   |            | DRIVE SCREW         | BM#04-03    | 17000      | 4   |

\* INDICATES PARTS RECOMMENDED FOR STOCK

**THE GORMAN-RUPP COMPANY • MANSFIELD, OHIO**



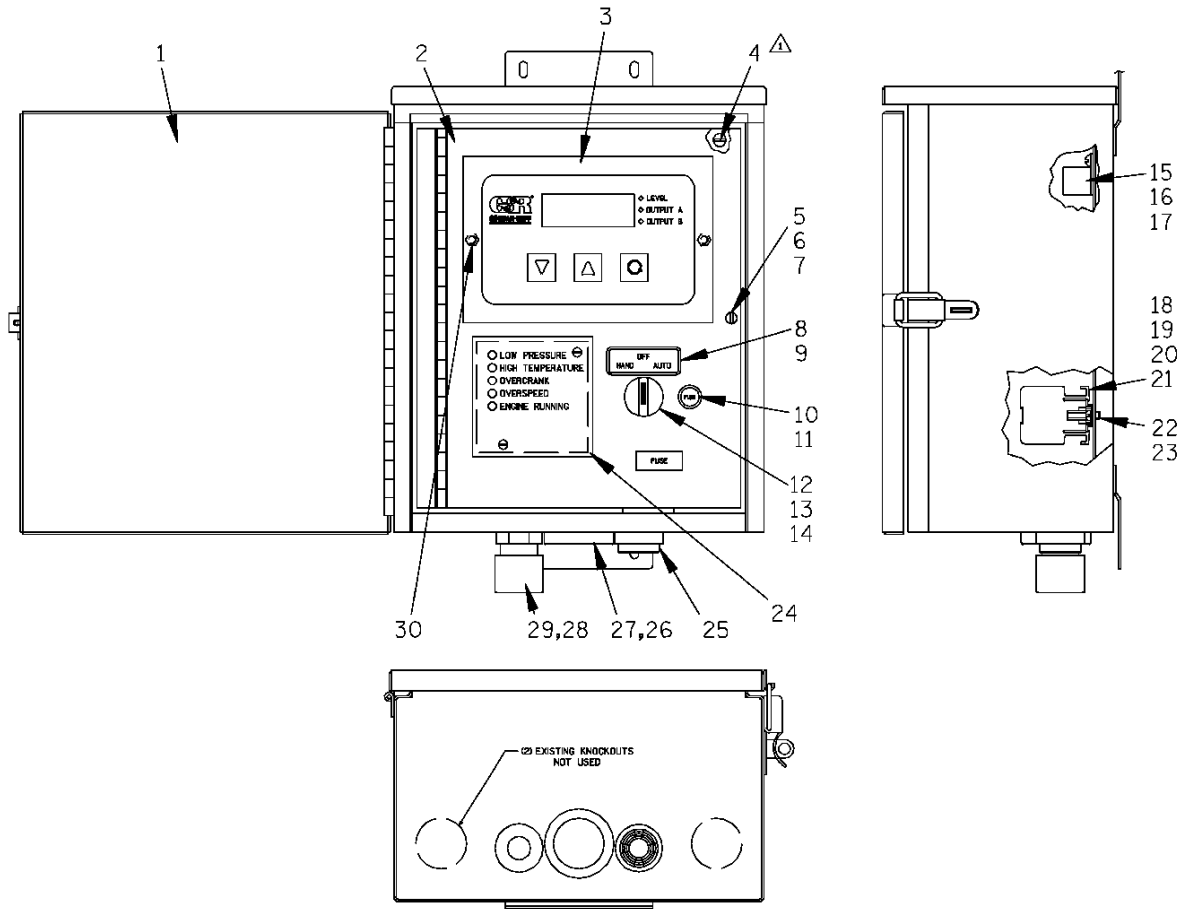
**THE GORMAN-RUPP COMPANY • MANSFIELD, OHIO**

S/N 1204168 Up  
PUMP ISSUE 1

**PARTS LIST**  
**46112-702 Peeler Type Priming Valve**

| ITEM NO. | PART NAME           | PART NUMBER | MAT'L CODE | QTY | ITEM NO. | PART NAME            | PART NUMBER | MAT'L CODE | QTY |
|----------|---------------------|-------------|------------|-----|----------|----------------------|-------------|------------|-----|
| 1        | PRIMING CHAMBER LID | 38346-613   | 13000      | 1   | 21       | LOCKWASHER           | J#10        | 17000      | 6   |
| 2        | PEELER VALVE NECK   | 38349-405   | 14000      | 1   | 22       | HEX NUT              | D#10        | 17000      | 6   |
| 3        | LOCKWASHER          | J#10        | 17000      | 4   | 23       | VLV STRAP BRKT ASSY  | 41881-523   | 24150      | 1   |
| 4        | HEX NUT             | D#10        | 17000      | 4   | 24       | INDUCTOR GUARD       | 34872-010   | 17000      | 1   |
| 5        | STUD                | 21332-038   | ---        | 4   | 25       | CLAMP PLATE          | 38349-406   | 14000      | 1   |
| 6 *      | NECK GASKET         | 38683-266   | 19020      | 1   | 26       | VALVE STRAP          | 33276-041   | 19410      | 1   |
| 7        | VALVE BODY          | 38343-014   | 14000      | 1   | 27       | CHECK VALVE ASSY     | 46411-112   | ---        | 1   |
| 8 *      | GASKET STRIP-42" LG | 18515-031   | ---        | 1   | 28 *     | -CHECK VALVE         | 38671-413   | 19000      | 1   |
| 9        | STUD                | C0406 1/2   | 17000      | 2   | 29       | -LOCKWASHER          | J#10        | 17000      | 1   |
| 10       | HEX LOCK NUT        | BC04        | 17000      | 2   | 30       | -HEX NUT             | D#10        | 17000      | 1   |
| 11       | HEX HD CAPSCREW     | B0402 1/2   | 17000      | 4   | 31       | -SMALL VALVE WEIGHT  | 21161-810   | ---        | 1   |
| 12       | LOCKWASHER          | J04         | 17000      | 4   | 32       | -HEX HD CAPSCREW     | B#10-02     | 17000      | 1   |
| 13       | BUTTON HD CAPSCREW  | CM0806      | 17000      | 2   | 33       | -LARGE VALVE WEIGHT  | 21161-811   | ---        | 1   |
| 14       | HEX NUT             | D08         | 17000      | 2   | 34       | -SEALING WASHER      | 25123-056   | ---        | 1   |
| 15       | LOCKWASHER          | J08         | 17000      | 2   | 35       | VALVE STRP PROTECTOR | 33271-019   | 19000      | 2   |
| 16       | PIPE PLUG           | P04         | 15079      | 1   |          | NOT SHOWN:           |             |            |     |
| 17 *     | PRIMING VALVE FLOAT | 38349-404   | 19220      | 1   |          | HEX HD CAPSCREW      | B0807       | 15991      | 4   |
| 18       | PRIMING CHAMBER     | 38343-015   | 10010      | 1   |          | FLANGE GASKET        | 4991G       | 18000      | 1   |
| 19       | GUIDE PLATE         | 33522-009   | 17000      | 2   |          | HEX HD CAPSCREW      | B1412       | 15991      | 12  |
| 20       | FLAT HD CAPSCREW    | F#10-03     | 17000      | 6   |          | HEX NUT              | D14         | 15991      | 12  |

\* INDICATES PARTS RECOMMENDED FOR STOCK



**THE GORMAN-RUPP COMPANY • MANSFIELD, OHIO**

S/N 1204168 Up  
PUMP ISSUE 1

**PARTS LIST**  
**47651-093 Control Panel Assembly**

| ITEM NO. | PART NAME                | PART NUMBER | MAT'L CODE | QTY |
|----------|--------------------------|-------------|------------|-----|
| 1        | ENCLOSURE MODIFICATION   | 42821-301   | ---        | 1   |
| 2        | INNER DOOR ASSY          | 42121-445   | 24150      | 1   |
| 3        | 12V DC EPS CONTROL       | 27781-029   | ---        | 1   |
| 4        | FLAT WASHER              | K#10        | 15991      | 4   |
| 5        | CAPTIVE SCREW            | 22814-936   | ---        | 1   |
| 6        | NYLON RETAINER           | 22814-938   | ---        | 1   |
| 7        | CLIP                     | 22814-937   | ---        | 1   |
| 8        | WARNING LABEL            | 38811-251   | ---        | 1   |
| 9        | LEGEND DECAL             | 38811-265   | ---        | 1   |
| 10       | BUSS FUSE MDL5           | 27311-554   | ---        | 1   |
| 11       | BUSS FUSE HOLDER         | 27314-102   | ---        | 1   |
| 12       | A/B 3 POS B00EM-SM33 STD | 27385-482   | ---        | 1   |
| 13       | A/B 2X LATCH 800E-A2L    | 27382-001   | ---        | 1   |
| 14       | A/B 2X N.D. 800E-2X10    | 27381-081   | ---        | 4   |
| 15       | RELAY                    | 27457-021   | ---        | 1   |
| 16       | RD HD MACHINE SCREW      | X#08-01     | 15991      | 1   |
| 17       | LOCKWASHER               | AK#08       | 15991      | 1   |
| 18       | CHANNEL END              | 27233-031   | ---        | 1   |
| 19       | CLIP                     | 27233-051   | ---        | 2   |
| 20       | CHANNEL                  | 34624-030   | 15001      | 1   |
| 21       | TUBLAR SCREW CONNECTOR   | 27233-355   | ---        | 8   |
| 22       | RD HD MACHINE SCREW      | X#08-01     | 15991      | 2   |
| 23       | EXT TH LOCKWASHER        | AL#08       | 15991      | 2   |
| 24       | AUTOSTART MODULE         | 29331-405   | ---        | 1   |
| 25       | ALARM                    | 26848-072   | ---        | 1   |
| 26       | ADLT FIBRE BUSHING       | 27137-506   | ---        | 1   |
| 27       | CONDUIT LOCKNUT          | 27185-004   | ---        | 1   |
| 28       | CONDUIT LOCKNUT          | 27185-002   | ---        | 1   |
| 29       | CORD GRIP                | 27184-135   | ---        | 1   |
| 30       | HEX NUT                  | D#06        | 15991      | 2   |

NOT SHOWN:

|                     |           |     |   |
|---------------------|-----------|-----|---|
| WIRING HARNESS      | 47381-035 | --- | 1 |
| CABLE TIE MTG BLOCK | 27111-352 | --- | 3 |
| INSERTION BRIDGE    | 27788-505 | --- | 1 |

**THE GORMAN-RUPP COMPANY • MANSFIELD, OHIO**

**For U.S. and International Warranty Information,  
Please Visit [www.grpumps.com/warranty](http://www.grpumps.com/warranty)**

**or call:**

**U.S.: 419-755-1280**

**International: +1-419-755-1352**

**For Canadian Warranty Information,  
Please Visit [www.grcanada.com/warranty](http://www.grcanada.com/warranty)**

**or call:**

**519-631-2870**

**THE GORMAN-RUPP COMPANY • MANSFIELD, OHIO**

**GORMAN-RUPP OF CANADA LIMITED • ST. THOMAS, ONTARIO, CANADA**