



***PRIME-AIRE[™]* SERIES**
PUMP MODEL
PA6A60-4045D

MANUAL
PART 2 of 3

PARTS
LIST
WITH
PERFORMANCE CURVE

THE GORMAN-RUPP COMPANY • MANSFIELD, OHIO

GORMAN-RUPP OF CANADA LIMITED • ST. THOMAS, ONTARIO, CANADA Printed in U.S.A.



The engine exhaust from this product contains chemicals known to the State of California to cause cancer, birth defects or other reproductive harm.

PERFORMANCE CURVE – SECTION A

RECORDING MODEL AND SERIAL NUMBERS

Please record the pump model and serial number in the spaces provided below and in the separate Installation/Operation Manual accompanying your pump. Your Gorman-Rupp distributor needs this information when you require parts or service.

Pump Model: _____

Serial Number: _____

WARRANTY INFORMATION

The pump warranty is provided as part of Gorman-Rupp's support program for customers who operate and maintain their equipment as described in this manual and other accompanying literature. Please note that should the equipment be abused or modified to change its performance beyond the original factory specifications, the warranty will become void and any claim will be denied.

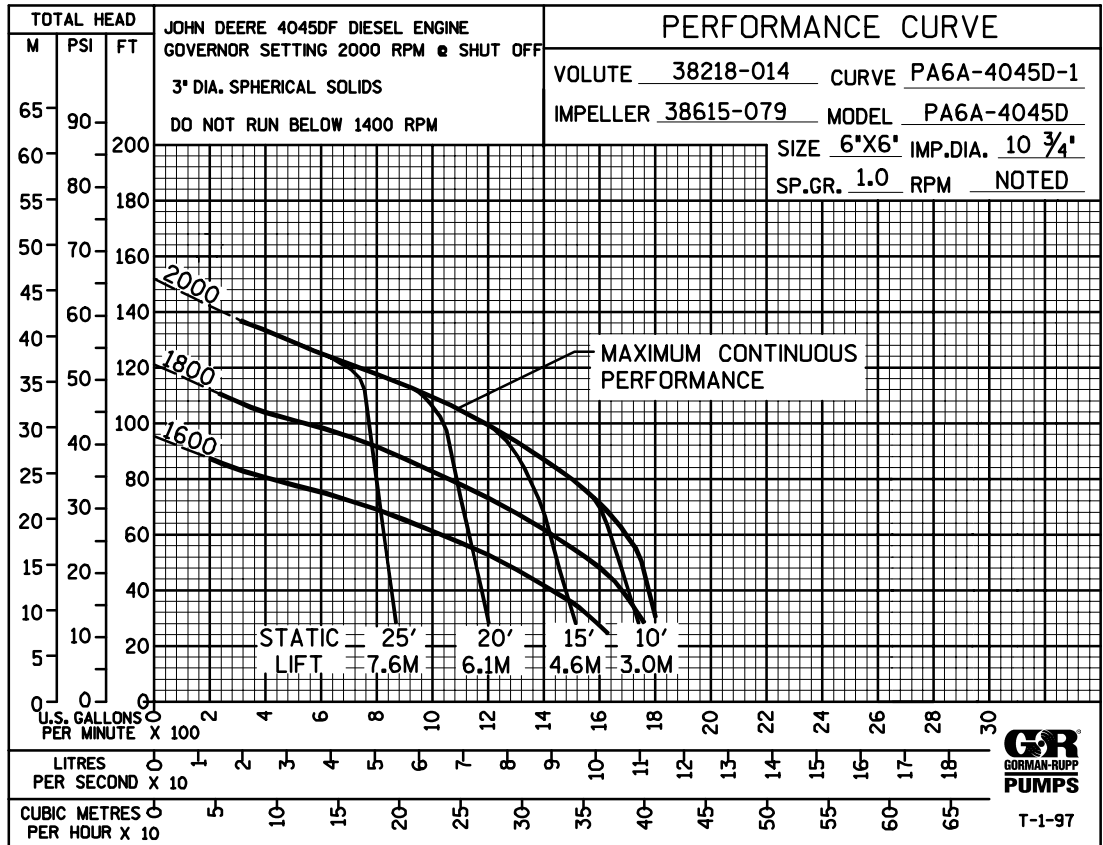
PERFORMANCE CURVE

The performance curve on the following page is based on 70° F (21° C) clear water at sea level, corrected to 0.80 specific gravity, with minimum suction lift. Since pump installations are seldom identical, your performance may be different due to such factors as viscosity, specific gravity, elevation, temperature, and impeller trim.

If your pump serial number is followed by an "N", your pump is **NOT** a standard production model. Contact the Gorman-Rupp Company to verify performance or part numbers.

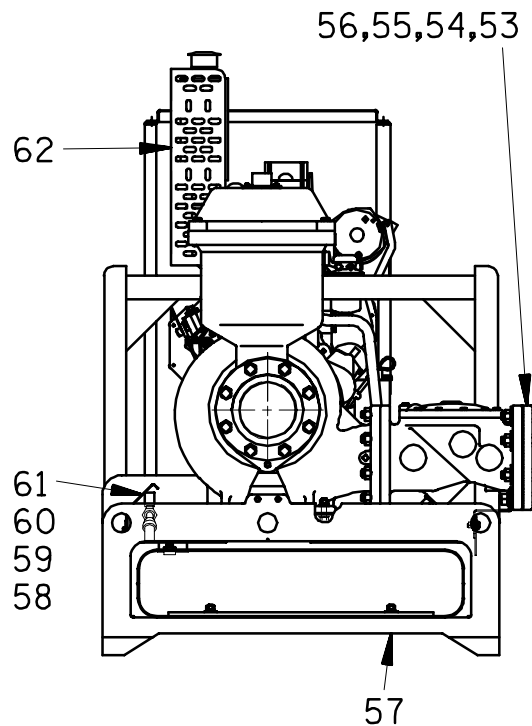
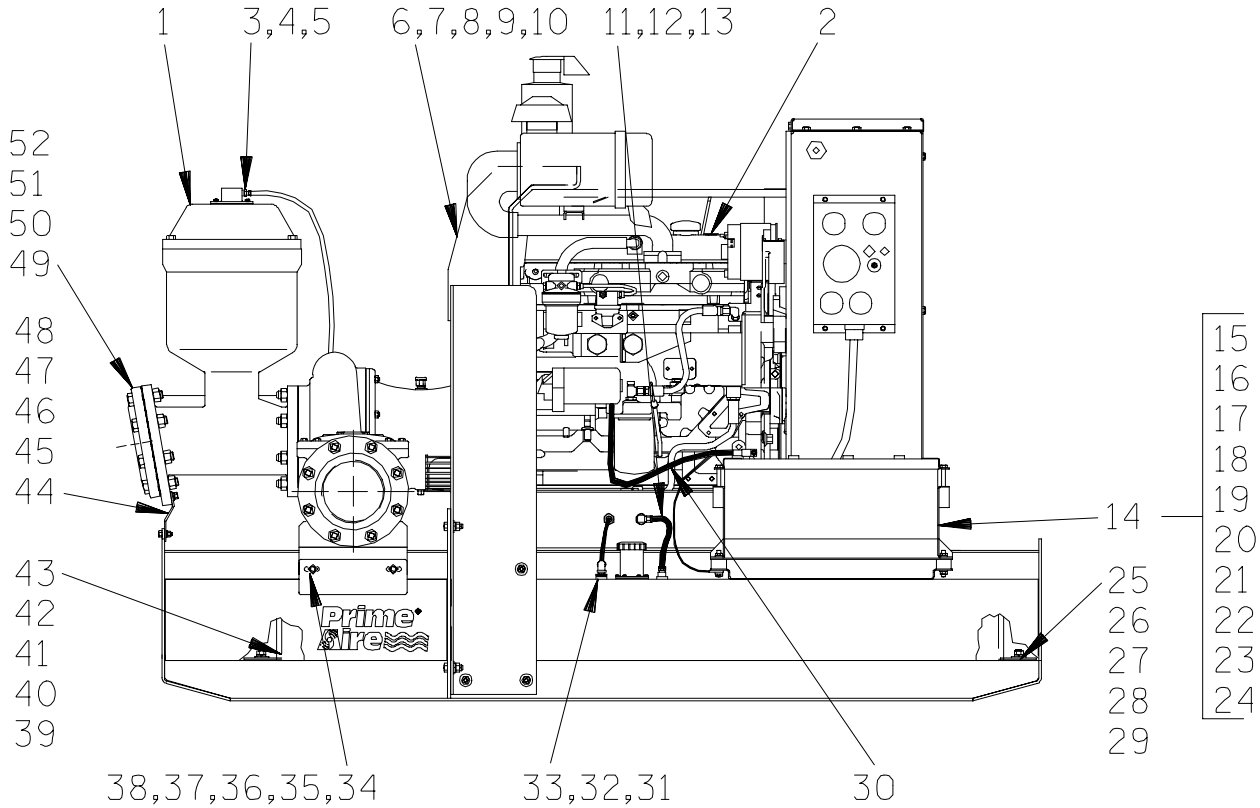


Pump speed and operating condition points must be within the continuous performance range shown on the curve.



Performance Curve – Model PA6A60-4045D

This Page Intentionally Blank



THE GORMAN-RUPP COMPANY • MANSFIELD, OHIO

GORMAN-RUPP OF CANADA LIMITED • ST. THOMAS, ONTARIO, CANADA

Printed in U.S.A.

S/N 1175400 Up
PUMP ISSUE 4

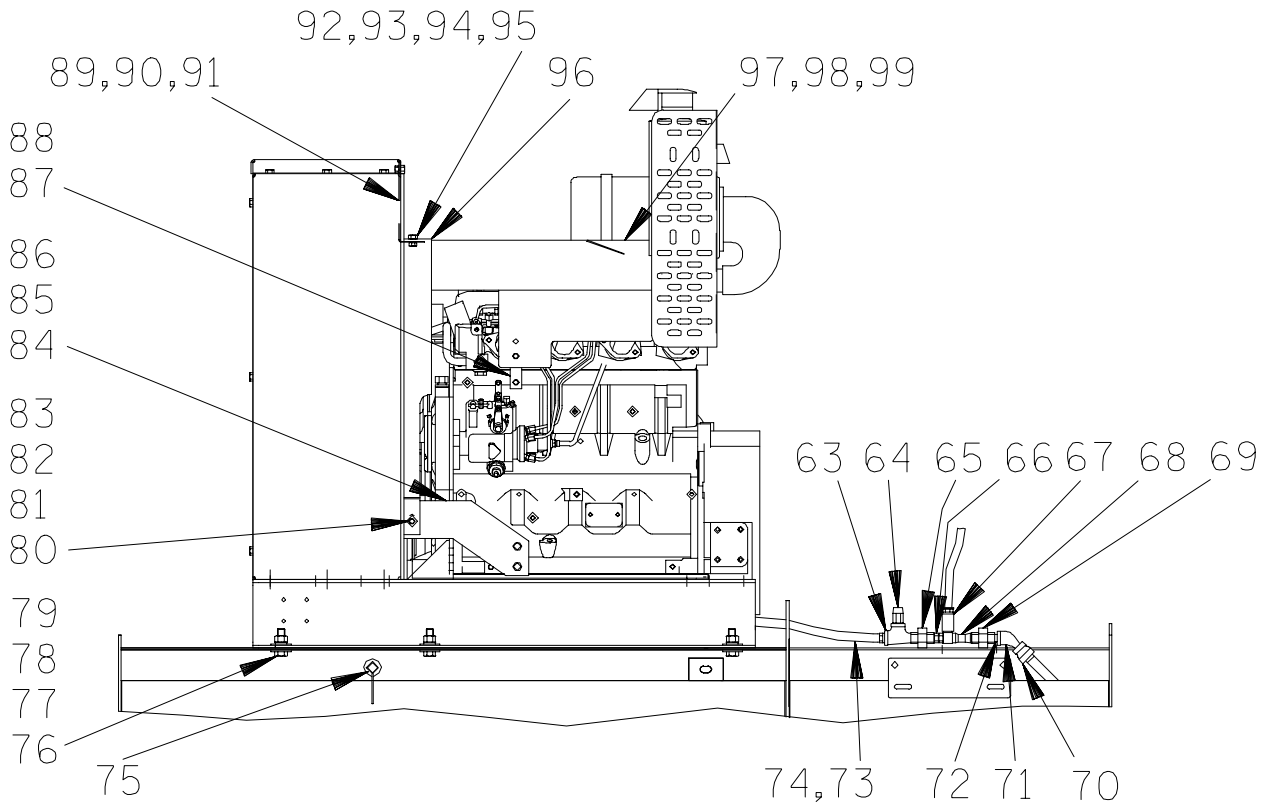
PARTS LIST
Pump Model PA6A60-4045D

If your pump serial number is followed by an "N", your pump is **NOT** a standard production model. Contact the Gorman-Rupp Company to verify part numbers.

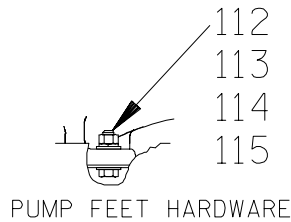
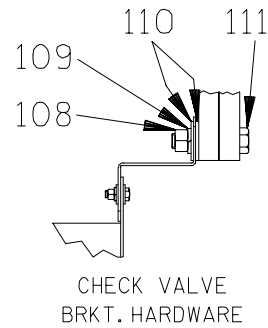
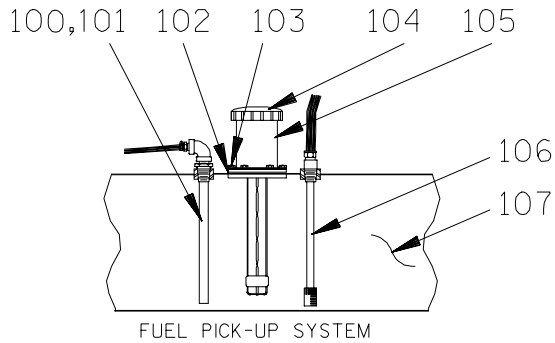
ITEM NO.	PART NAME	PART NUMBER	MAT'L CODE	QTY	ITEM NO.	PART NAME	PART NUMBER	MAT'L CODE	QTY
1	PUMP ASSEMBLY	PA6A60-(SAE 4/10)		1	32	HOSE	11308H	---	1
2	J D 4045DF150 ENGINE	29224-113	---	1	33	HOSE CLAMP	26518-641	---	2
3	REDUCER BUSHING	AP1608	11999	1	34	CHECK VALVE BRKT	34518-017	15120	1
4	MALE CONNECTOR	26525-020	---	2	35	HEX HD CAPSCREW	B0604	15991	2
5	1/2" BRAIDED HOSE (3.25')	18513-113	---	1	36	HEX NUT	D06	15991	2
6	LIFTING BAIL	44711-020	24150	1	37	LOCKWASHER	J06	15991	2
7	HEX HD CAPSCREW	B0805	15991	10	38	FLAT WASHER	K06	15991	4
8	HEX NUT	D08	15991	6	39	FUEL TANK RETAINER	33541-039	15120	1
9	LOCKWASHER	J08	15991	10	40	HEX HD CAPSCREW	B0806	15991	2
10	FLAT WASHER	K08	15991	12	41	HEX NUT	D08	15991	2
11	MALE CONNECTOR	S1447	---	1	42	LOCKWASHER	J08	15991	2
12	MALE ELBOW	26351-131	---	1	43	FLAT WASHER	K08	15991	2
13	HOSE ASSY	46341-789	---	1	44	PRIM CHAMBER BRKT	34535-010	15120	1
14	BATTERY BOX ASSY	GRP40-08C	---	1	45	HEX HD CAPSCREW	B0604	15991	3
15	-HEX HD CAPSCREW	B0607	15991	2	46	HEX NUT	D06	15991	2
16	-FLAT WASHER	K06	15991	2	47	LOCKWASHER	J06	15991	3
17	-FLANGED HEX NUT	21765-314	---	2	48	FLAT WASHER	K06	15991	3
18	-GRND CABLE ASSY	47311-064	---	1	49	SUCTION FLANGE	1758	10010	1
19	-BATTERY BOX LID	42113-012	24150	1	50	SUCT FLANGE GSKT	1679G	18000	1
20	-12V BATTERY	SEE OPTIONS LIST			51	HEX HD CAPSCREW	B1212	15991	8
21	-BATTERY TAG	38818-506	---	1	52	HEX NUT	D12	15991	8
22	-BATTERY BOX	42431-030	24150	1	53	DISCHARGE FLANGE	1758	10010	1
23	-STUD MOUNT	24631-006	---	4	54	DISCH FLANGE GSKT	1679G	18000	1
24	-FLANGED HEX NUT	21765-314	---	8	55	HEX HD CAPSCREW	B1213	15991	6
25	A/C FUEL TANK RET	33541-039	15120	1	56	HEX NUT	D12	15991	6
26	HEX HD CAPSCREW	B0806	15991	2	57	SKID ASSY	41565-570	24150	1
27	HEX NUT	D08	15991	2	58	VENTURI GUARD ASSY	42381-067	---	1
28	LOCKWASHER	J08	15991	2	59	HEX HD CAPSCREW	B0504	15991	2
29	FLAT WASHER	K08	15991	2	60	LOCKWASHER	J05	15991	2
30	I/O CABLE ASSY	47311-107	---	1	61	FLAT WASHER	K05	15991	2
31	HOSE BARB FITTING	26523-386	---	2	62	MUFFLER GRD ASSY	42331-057	---	1

* INDICATES PARTS RECOMMENDED FOR STOCK

THE GORMAN-RUPP COMPANY • MANSFIELD, OHIO



VENTURI SYSTEM AND BELT GUARDS



S/N 1175400 Up
PUMP ISSUE 4

PARTS LIST
Pump Model PA6A60-4045D

ITEM NO.	PART NAME	PART NUMBER	MAT'L CODE	QTY	ITEM NO.	PART NAME	PART NUMBER	MAT'L CODE	QTY
63	SERVICE TEE	US08	11999	1	100	FUEL RETURN ASSY	46331-015	24150	1
64	RELIEF VALVE	26662-028	---	1	101	PIPE ELBOW	R04	11999	1
65	PIPE UNION	AH08	11999	1	102	FILLER NECK GASKET	38683-269	19060	1
66	REDUCER BUSHING	AP0806	15079	1	103	HEX HD CAPSCREW	B#10-02S	15991	6
67	PIPE COUPLING	AE08	15079	1	104	FILL CAP	29332-133	---	1
68	VENTURI	26817-002	---	1	105	FILLER NECK	29332-152	---	1
69	PIPE UNION	AH08	11999	1	106	FUEL PICK-UP	29332-143	---	1
70	RED PIPE BUSHING	AE1208	15079	1	107	FUEL TANK ASSY	46711-082	---	1
71	45° STREET ELBOW	AGS08	11999	1	108	HEX NUT	D12	15991	2
72	PIPE NIPPLE	T08	15079	1	109	LOCK WASHER	J12	15991	2
73	HOSE ASSY	46341-422	---	1	110	FLAT WASHER	K12	15991	4
74	MALE ADAPTER	26351-065	---	2	111	HEX HD CAPSCREW	B1214	15991	2
75	OIL DRAIN ASSY	46342-013	---	1	112	HEX HD CAPSCREW	B0808	15991	2
76	HEX HD CAPSCREW	B1007	15991	6	113	FLAT WASHER	K08	15991	4
77	HEX NUT	D10	15991	6	114	LOCK WASHER	J08	15991	2
78	LOCKWASHER	J10	15991	6	115	HEX NUT	D08	15991	2
79	FLAT WASHER	K10	15991	12	NOT SHOWN:				
80	HEX HD CAPSCREW	B0604	15991	1		INSTRUCTION DECAL	38818-128	---	1
81	HEX NUT	D06	15991	1		WARNING DECAL	38816-063	---	1
82	LOCKWASHER	J06	15991	1		LUBE DECAL	38816-079	---	1
83	FLAT WASHER	K06	15991	2		SUCTION STICKER	6588AG	---	1
84	BELT GUARD ASSY	33441-004	15120	1		DISCHARGE STICKER	6588BJ	---	1
85	HEX HD CAPSCREW	22645-180	---	2		RPM DECAL	2613FJ	---	1
86	LOCKWASHER	21171-512	---	2		LIFT DECAL	38816-175	---	1
87	GUARD BRKT ASSY	42381-071	24150	1		LIFT DECAL	38816-218	---	2
88	HEX HD CAPSCREW	22645-158	---	1		PA DECAL	38812-078	---	2
89	HEX HD CAPSCREW	B0603	15991	1		WARNING DECAL	2613FE	---	1
90	LOCKWASHER	J06	15991	1		G-R DECAL	GR06	---	2
91	GUARD BRKT ASSY	42381-072	24150	1		INSTR TAG PAPER	38817-009	---	1
92	HEX HD CAPSCREW	B0604	15991	2		ENG START-UP TAG	38816-269	---	1
93	HEX NUT	D06	15991	2		NAME PLATE	38818-127	13000	1
94	LOCKWASHER	J06	15991	2		DRIVE SCREW	BM#04-03	17000	4
95	FLAT WASHER	K06	15991	2		STRAINER	7823A	24000	1
96	BELT GUARD	34778-007	15120	1	OPTIONAL:				
97	ENG GUARD ASSY	42381-070	24150	1		12V BATTERY	29331-506	---	1
98	HEX HD CAPSCREW	B0603	15991	2					
99	LOCKWASHER	J06	15991	2					

* INDICATES PARTS RECOMMENDED FOR STOCK

THE GORMAN-RUPP COMPANY • MANSFIELD, OHIO

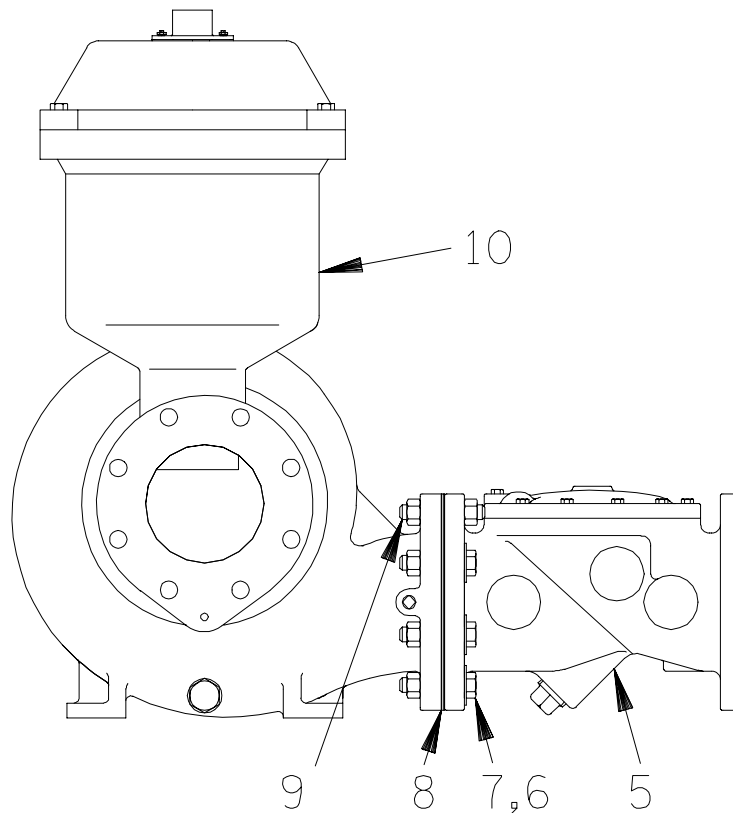
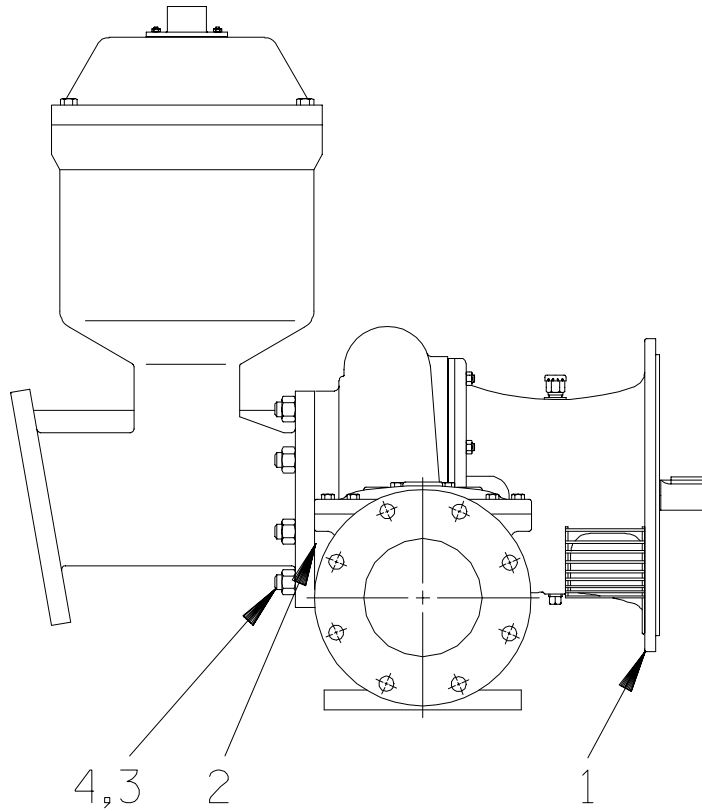
4 of 12

GORMAN-RUPP OF CANADA LIMITED • ST. THOMAS, ONTARIO, CANADA Printed in U.S.A.

Page 64.6 A8

© Copyright by the Gorman-Rupp Company

02/05/99

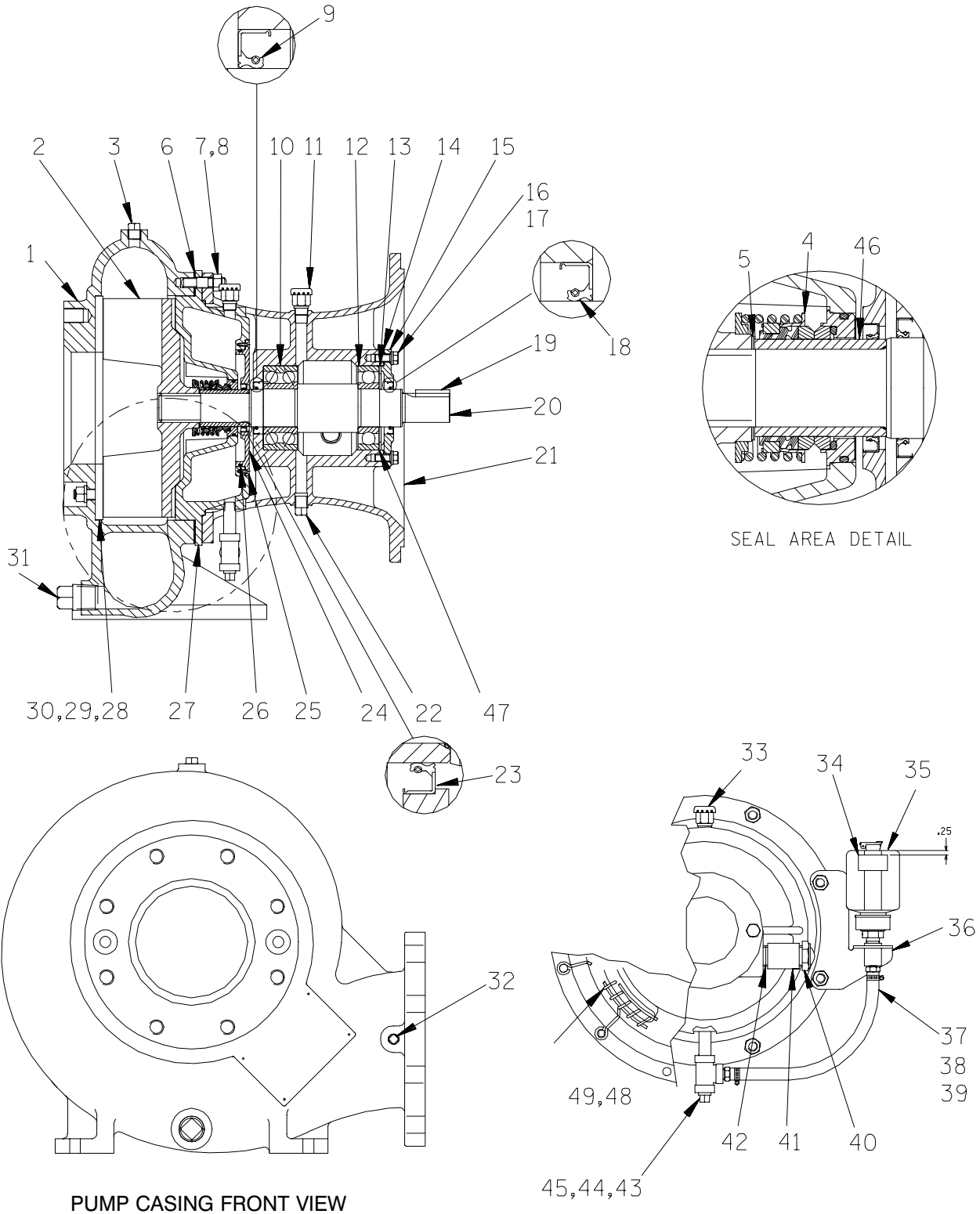


S/N 1175400 Up
PUMP ISSUE 4

PARTS LIST
PA6A60-(SAE 4/10) Pump Assembly

ITEM NO.	PART NAME	PART NUMBER	MAT'L CODE	QTY
1	PUMP END ASSY	66E60-(SAE4/10)	---	1
2	* PUMP CASING GSKT	1679G	18000	1
3	STUD	C1211	15991	8
4	HEX NUT	D12	15991	8
5	CHECK VALVE ASSY	26642-126	---	1
	-FLAPPER	26688-001	---	1
	-COVER GASKET	26688-002	---	1
6	HEX HD CAPSCREW	B1214	15991	7
7	HEX NUT	D12	15991	9
8	* GASKET 6 IN.	25113-036	---	1
9	STUD	C1215	15991	1
10	PRIMING CHAMBER ASSY	46112-703	---	1

* INDICATES PARTS RECOMMENDED FOR STOCK

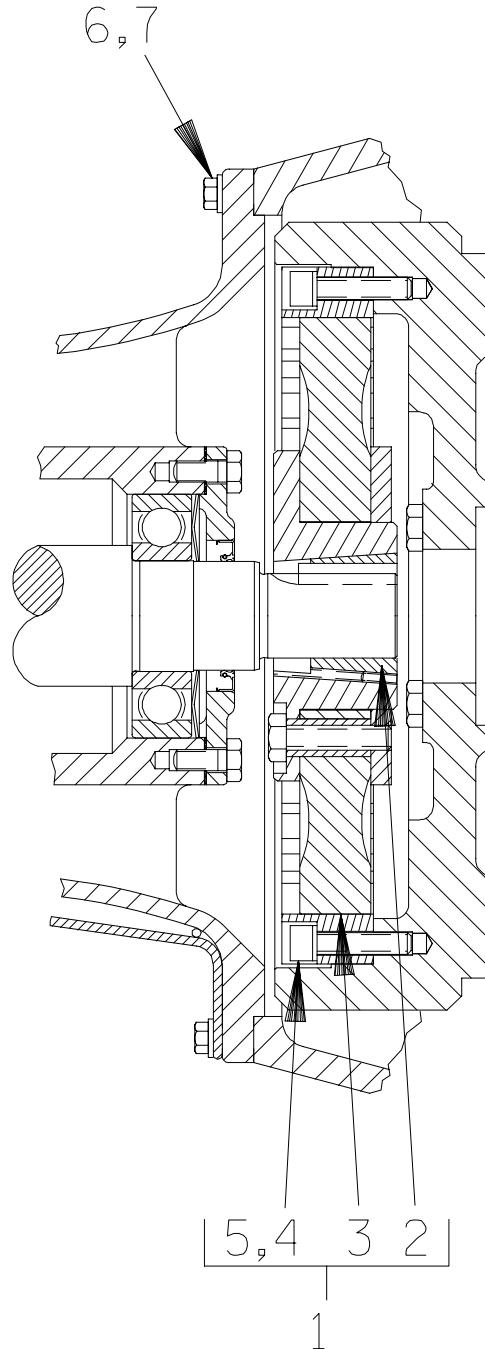


S/N 1175400 Up
PUMP ISSUE 4

PARTS LIST
66E60-(SAE4/10) Pump End Assembly

ITEM NO.	PART NAME	PART NUMBER	MAT'L CODE	QTY	ITEM NO.	PART NAME	PART NUMBER	MAT'L CODE	QTY
1	PUMP CASING	38218-014	10000	1	27	SEAL PLATE	38272-527	10000	1
2 *	IMPELLER ASSY	46151-409	----	1	28 *	WEAR PLATE ASSY	46451-746	24150	1
3	PIPE PLUG	P06	15079	1	29	HEX NUT	D08	15991	2
4 *	SEAL ASSY	46512-048	----	1	30	LOCKWASHER	J08	15991	2
5 *	ADJ SHIM SET	5091	17090	1	31	PIPE PLUG	P16	10009	1
6 *	CASING GASKET SET	34G	18000	1	32	PIPE PLUG	P04	15079	1
7	STUD	C0809	15991	8	33	AIR VENT	S1703	----	1
8	HEX NUT	D08	15991	8	34	OIL LEVEL DECAL	38816-123	----	1
9 *	OIL SEAL	25258-622	----	1	35	BOTTLE OILER	26713-004	----	1
10 *	INBOARD BALL BEARING	23421-461	----	1	36	BRACKET ASSY	41881-619	24150	1
11	AIR VENT	S1703	----	1	37	MALE CONNECTOR	26523-409	----	2
12 *	OUTBOARD BALL BRG	S1077	----	1	38	HOSE	18513-054	----	1
13 *	THRUST WASHER	31133-197	15210	1	39	HOSE CLAMP	26518-642	----	2
14 *	BRG COVER GSKT	5413G	18000	1	40	OIL LVL SIGHT GAUGE	S1471	----	1
15	BEARING CAP	4185A	10010	1	41	PIPE COUPLING	AE12	15079	1
16	HEX HD CAPSCREW	B0604	15991	4	42	PIPE NIPPLE	T12	15079	1
17	LOCKWASHER	J06	15991	4	43	PIPE NIPPLE	T0608	15079	1
18 *	OIL SEAL	25258-622	----	1	44	PIPE TEE	U06	11999	1
19 *	IMP SHAFT KEY	N0607	15990	1	45	SEAL CVTY DRAIN PLUG	P06	15079	1
20 *	IMPELLER SHAFT	38514-807	1706H	1	46 *	SHAFT SLEEVE	31163-016	1706H	1
21	INTERMEDIATE	38263-614	10010	1	47 *	BRG SHIM SET	8546	15990	1
22	BRG CAV DRAIN PLUG	P06	15079	1	48	INTERMEDIATE GUARD	42381-031	24152	1
23 *	OIL SEAL	25258-620	----	1	49	INTERMEDIATE GUARD	42381-032	24152	1
24	SEAL PLATE COVER	38242-707	10000	1	NOT SHOWN:				
25	FH MACHINE SCREW	Y#10-02	15991	4		DRIVE ASSY	44162-119	----	1
26 *	SEAL PLT CVR O-RING	25152-256	----	1		NAME PLATE	38818-127	13000	1
						DRIVE SCREW	BM#04-063	17000	4

* INDICATES PARTS RECOMMENDED FOR STOCK

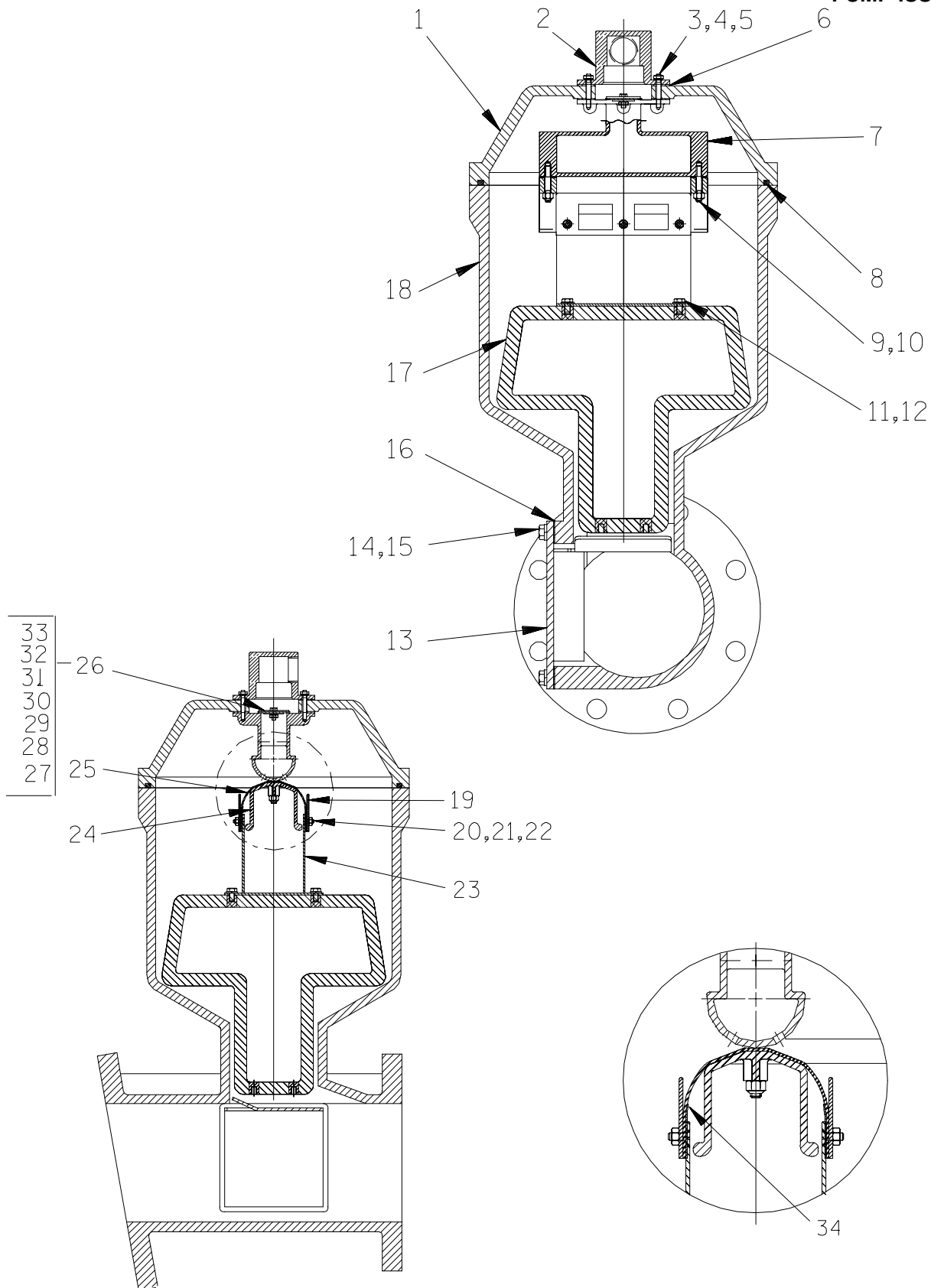


S/N 1175400 Up
PUMP ISSUE 4

PARTS LIST
(SAE4/10) Drive Assembly

ITEM NO.	PART NAME	PART NUMBER	MAT'L CODE	QTY
1	COUPLING KIT	48112-001	---	1
2	-BUSHING	24131-345	---	1
3	-COUPLING ASSEMBLY	44165-011	---	1
4	-LOCKWASHER	21171-536	---	8
5	-SOCKET HD CAPSCREW	22644-220	---	8
6	HEX HD CAPSCREW	22645-164	---	12
7	LOCKWASHER	21171-511	---	12

S/N 1175400 Up
PUMP ISSUE 4



THE GORMAN-RUPP COMPANY • MANSFIELD, OHIO

GORMAN-RUPP OF CANADA LIMITED • ST. THOMAS, ONTARIO, CANADA

Printed in U.S.A.

S/N 1175400 Up
PUMP ISSUE 4

PARTS LIST
46112-703 Peeler Type Priming Valve

ITEM NO.	PART NAME	PART NUMBER	MAT'L CODE	QTY	ITEM NO.	PART NAME	PART NUMBER	MAT'L CODE	QTY
1	PRIMING CHAMBER LID	38346-613	13000	1	20	FLAT HD CAPSCREW	F#10-03	17000	6
2	PEELER VALVE NECK	38349-410	10000	1	21	LOCKWASHER	J#10	17000	6
3	LOCKWASHER	J#10	17000	4	22	HEX NUT	D#10	17000	6
4	HEX NUT	D#10	17000	4	23	VLV STRAP BRKT ASSY	41881-523	2415X	1
5	STUD	21332-038	---	4	24	CLAMP PLATE	38349-406	14000	1
6 *	NECK GASKET	38683-266	19020	1	25	VALVE STRAP	33276-041	19410	1
7	VALVE BODY	38343-014	14000	1	26	CHECK VALVE ASSY	46411-112	---	1
8 *	GASKET STRIP 4.06' LG	18515-031	---	1	27 *	-CHECK VALVE	38671-413	19020	1
9	STUD	C0406 1/2	17000	2	28	-LOCKWASHER	J#10	17000	1
10	HEX LOCK NUT	BC04	17000	2	29	-HEX NUT	D#10	17000	1
11	HEX HD CAPSCREW	B0402 1/2	17000	4	30	-FLATWASHER	21161-810	---	1
12	LOCKWASHER	J04	17000	4	31	-HEX HD CAPSCREW	B#10-02	17000	1
13	INDUCTOR GUARD ASSY	42381-066	24150	1	32	-FLATWASHER	21161-811	---	1
14	HEX HD CAPSCREW	B0605	15991	4	33	-SEALING WASHER	25123-056	---	1
15	LOCKWASHER	J06	15991	4	34	VLV STRAP PROTECTOR	33271-019	19000	2
16 *	CHAMBER GSKT	38687-552	18000	1	NOT SHOWN:				
17 *	PRIMING VALVE FLOAT	38349-404	19220	1		HEX HD CAPSCREW	B0807	15991	4
18	PRIMING CHAMBER	38343-017	10000	1		PIPE PLUG	P04	15079	1
19	GUIDE PLATE	33522-009	17000	2					

* INDICATES PARTS RECOMMENDED FOR STOCK

**For U.S. and International Warranty Information,
Please Visit www.grpumps.com/warranty
or call:
U.S.: 419-755-1280
International: +1-419-755-1352**

**For Canadian Warranty Information,
Please Visit www.grcanada.com/warranty
or call:
519-631-2870**