



***PRIME-AIRE<sup>®</sup>* SERIES**  
**PUMP MODEL**  
**PA12A60-B**

**MANUAL**  
**PART 2 of 3**

**PARTS**  
**LIST**  
**WITH**  
**PERFORMANCE CURVE**

**THE GORMAN-RUPP COMPANY • MANSFIELD, OHIO**

[www.grpumps.com](http://www.grpumps.com)

**GORMAN-RUPP OF CANADA LIMITED • ST. THOMAS, ONTARIO, CANADA** Printed in U.S.A.

©Copyright by the Gorman-Rupp Company

Register your new  
Gorman-Rupp pump online at  
**[www.grpumps.com](http://www.grpumps.com)**

Valid serial number and e-mail address required.

**RECORD YOUR PUMP MODEL AND SERIAL NUMBER**

Please record your pump model and serial number in the spaces provided below. Your Gorman-Rupp distributor needs this information when you require parts or service.

Pump Model: \_\_\_\_\_

Serial Number: \_\_\_\_\_

## PERFORMANCE CURVE – SECTION A

### RECORDING MODEL AND SERIAL NUMBERS

Please record the pump model and serial number in the spaces provided below and in the separate Installation/Operation Manual accompanying your pump. Your Gorman-Rupp distributor needs this information when you require parts or service.

Pump Model: \_\_\_\_\_

Serial Number: \_\_\_\_\_

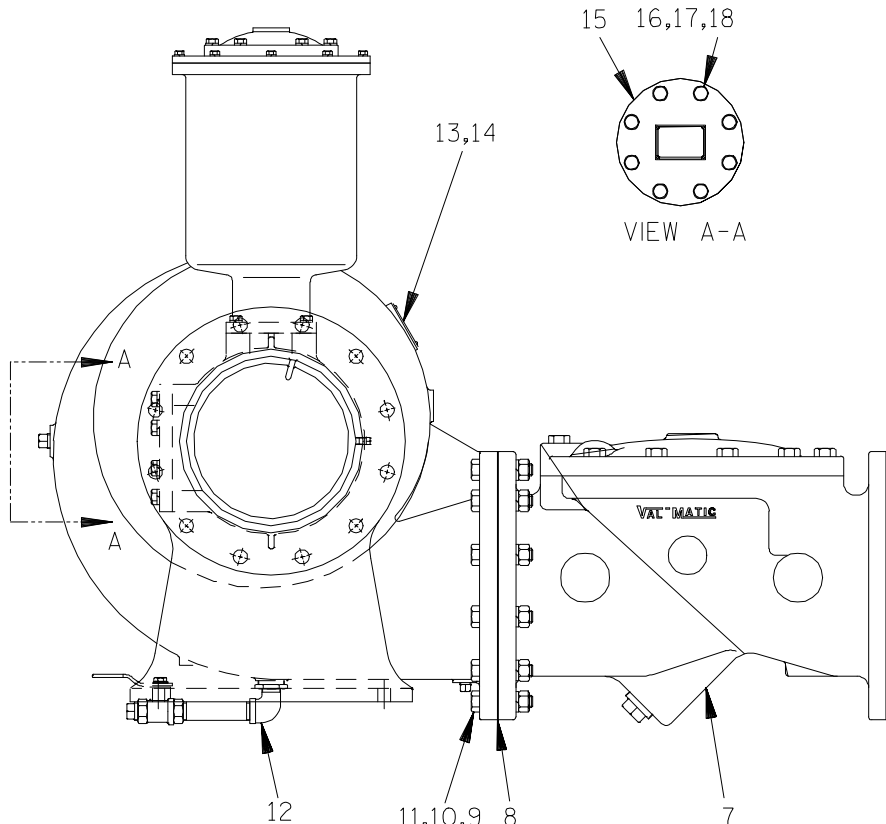
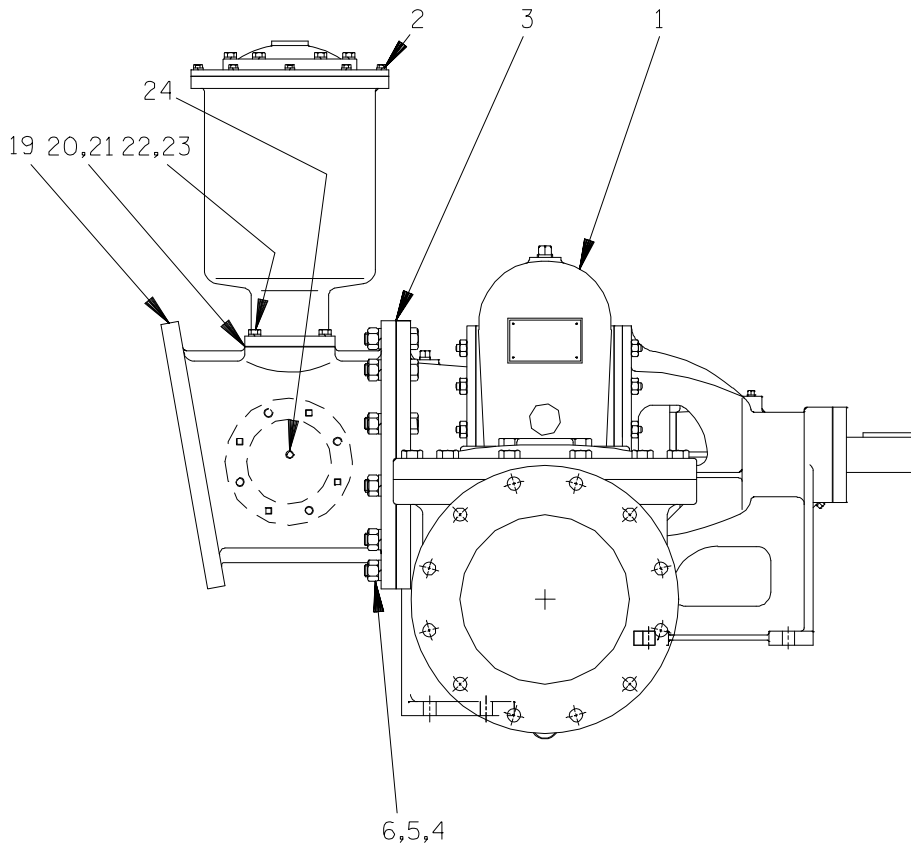
### WARRANTY INFORMATION

The pump warranty is provided as part of Gorman-Rupp's support program for customers

who operate and maintain their equipment as described in this manual and other accompanying literature. Please note that should the equipment be abused or modified to change its performance beyond the original factory specifications, the warranty will become void and any claim will be denied.

### PERFORMANCE CURVE

The performance curve for this model was unavailable at the time of printing.



VIEW A-A

**THE GORMAN-RUPP COMPANY • MANSFIELD, OHIO**

GORMAN-RUPP OF CANADA LIMITED • ST. THOMAS, ONTARIO, CANADA

Printed in U.S.A.

© Copyright by the Gorman-Rupp Company

S/N 1299486 Up  
PUMP ISSUE 4

**PARTS LIST**  
**Pump Model PA12A60—B**

If your pump serial number is followed by an "N", your pump is **NOT** a standard production model. Contact the Gorman-Rupp Company to verify part numbers.

ITEM NO.	PART NAME	PART NUMBER	MAT'L CODE	QTY
1	PUMP ASSEMBLY	612M60—B	----	1
2	PRIMING CHAMBER ASSEMBLY	46112—707	----	1
3	* FLANGE GASKET	4991G	18000	1
4	HEX HEAD CAPSCREW	B1413	15991	12
5	LOCK WASHER	J14	15991	12
6	HEX NUT	D14	15991	12
7	CHECK VALVE ASSEMBLY	26642—128	----	1
	* —FLAPPER	26688—003	----	1
	* —COVER GASKET	26688—004	----	1
8	* FLANGE GASKET	4991G	18000	1
9	HEX HEAD CAPSCREW	B1415	15991	12
10	LOCK WASHER	J14	15991	12
11	HEX NUT	D14	15991	12
12	DRAIN VALVE ASSEMBLY	46346—262	----	1
13	NAME PLATE	38818—127	13000	1
14	DRIVE SCREW	BM#04—03	17000	4
15	BLIND FLANGE ASSEMBLY	42111—358	----	1
16	HEX HEAD CAPSCREW	B1007	15991	8
17	LOCK WASHER	J10	15991	8
18	* FLANGE GASKET	25113—034	----	1
19	12" SUCTION SPOOL	38642—617	----	1
20	* GASKET	38687—053	19060	1
21	BAFFLE	31113—011	17000	1
22	HEX HEAD CAPSCREW	B0807	15991	4
23	LOCK WASHER	J08	15991	4
24	PIPE PLUG	P04	15079	1

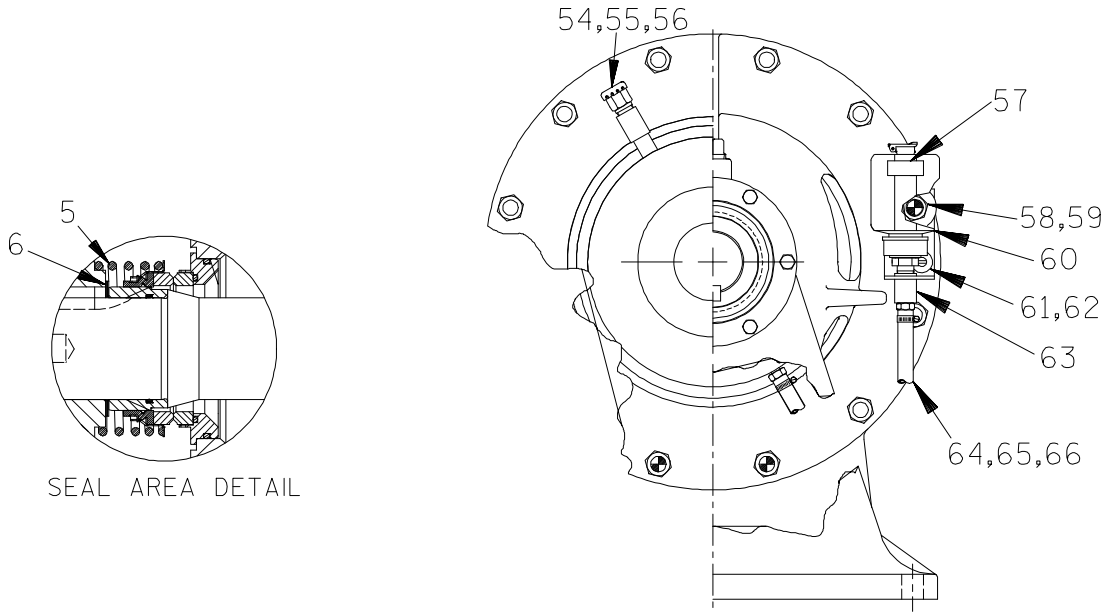
NOT SHOWN:

STRAINER	46641—012	24150	1
----------	-----------	-------	---

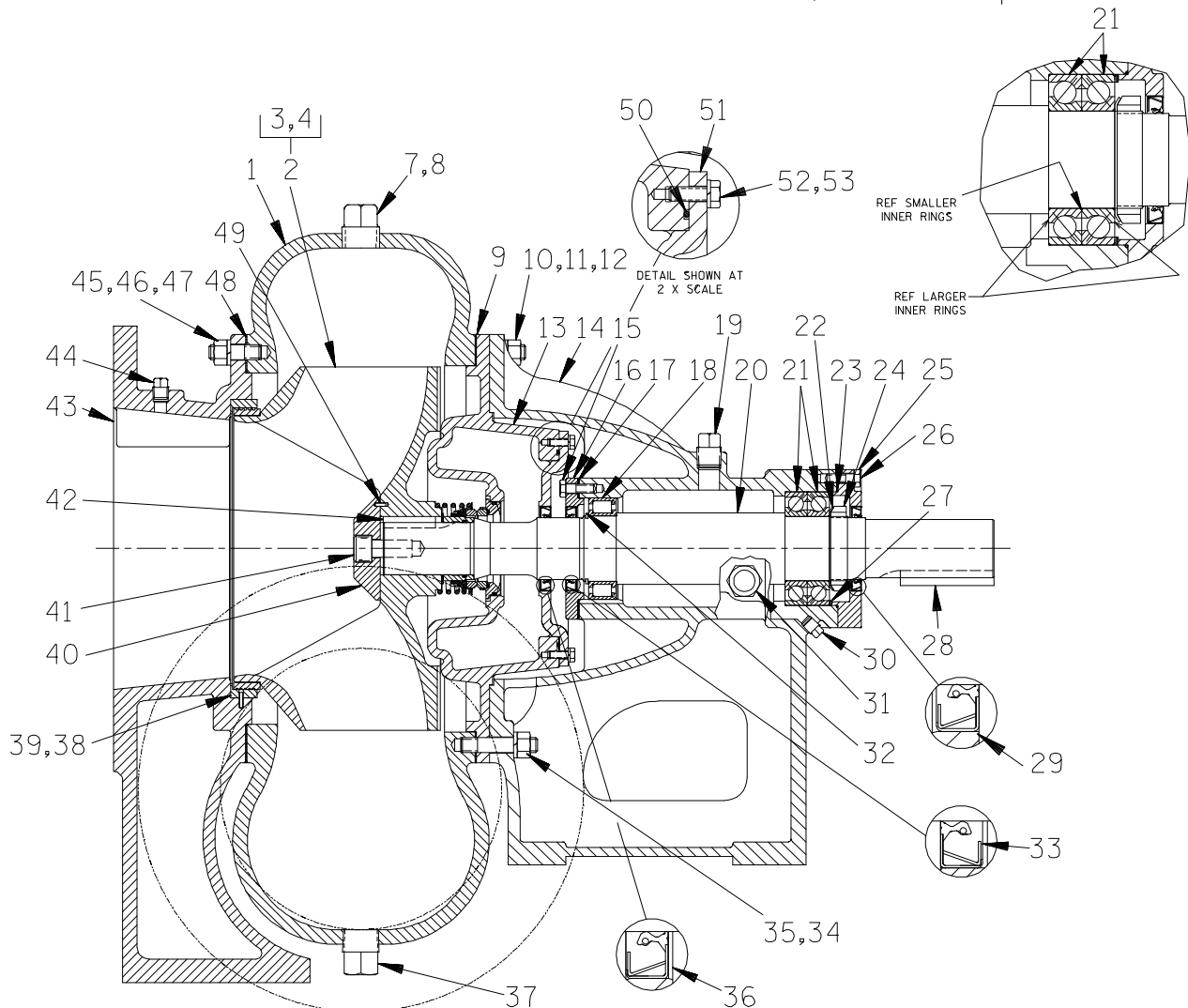
\* INDICATES PARTS RECOMMENDED FOR STOCK

**THE GORMAN-RUPP COMPANY • MANSFIELD, OHIO**

GORMAN-RUPP OF CANADA LIMITED • ST. THOMAS, ONTARIO, CANADA Printed in U.S.A.



SEAL AREA DETAIL



**THE GORMAN-RUPP COMPANY • MANSFIELD, OHIO**

GORMAN-RUPP OF CANADA LIMITED • ST. THOMAS, ONTARIO, CANADA

Printed in U.S.A.

S/N 1299486 Up  
PUMP ISSUE 4

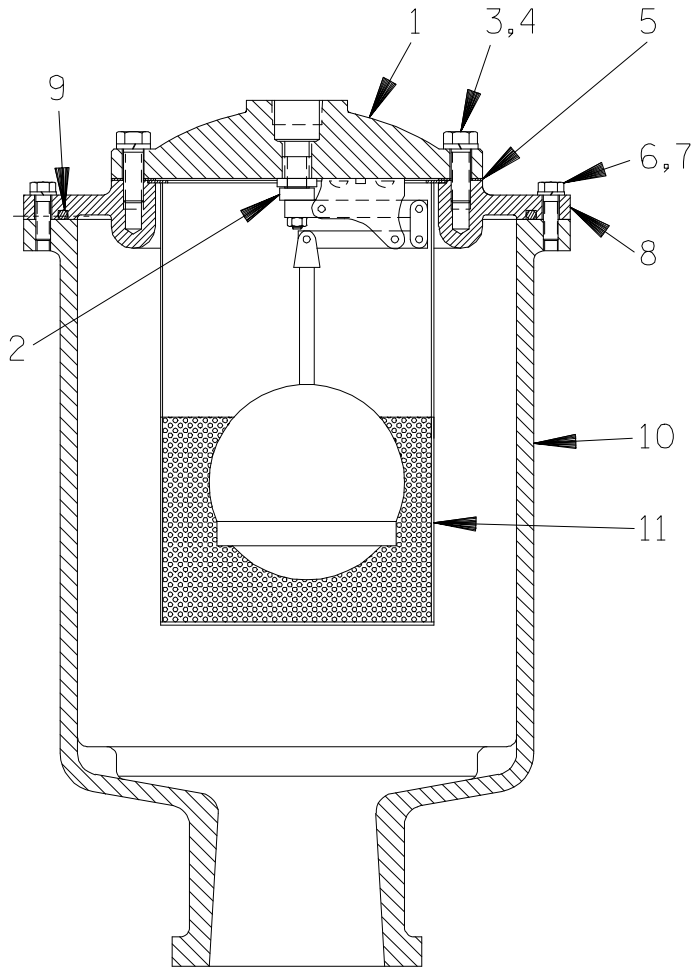
**PARTS LIST**  
**612M60-B Pump Assembly**

ITEM NO.	PART NAME	PART NUMBER	MAT'L CODE	QTY	ITEM NO.	PART NAME	PART NUMBER	MAT'L CODE	QTY
1	PUMP CASING	38219-305	10010	1	40	IMPELLER WASHER	31167-022	15030	1
2	IMPELLER/WR RING ASSY	46151-022	24110	1	41	SOCKET HD CAPSCREW	BD1206	15990	1
3	-IMPELLER	NOT AVAILABLE		1	42 *	IMPELLER KEY	N0809	15990	1
4 *	-WEAR RING	4182A	11030	1	43	SUCTION HEAD	4180	10010	1
5 *	MECHANICAL SEAL	46512-109	----	1	44	PIPE PLUG	P06	15079	1
6 *	IMP ADJ SHIM SET	48261-033	----	1	45	STUD	C1009	15991	12
7	PIPE PLUG	P12	15079	2	46	HEX NUT	D10	15991	12
8	PIPE PLUG	P06	15079	1	47	LOCK WASHER	J10	15991	12
9 *	CASING GASKET	38674-434	18000	1	48 *	SUCTION HEAD GASKET	4180G	18000	1
10	STUD	C1011	15991	9	49	ROLL PIN	S2197	----	1
11	HEX NUT	D10	15991	9	50 *	COVER O-RING	25151-266	----	1
12	LOCK WASHER	J10	15991	9	51	SEAL PLATE COVER	38242-708	10000	1
13	SEAL PLATE	38272-717	10000	1	52	HEX HD CAPSCREW	J05	15991	6
14	PEDESTAL	38257-520	10000	1	53	LOCK WASHER	B0503-1/2	15991	6
15	HEX HD CAPSCREW	B0605	15991	6	54	AIR VENT	S1703	----	1
16	BEARING CAP	38322-425	10010	1	55	PIPE NIPPLE	T0608	15079	1
17 *	BEARING CAP GASKET	4184G	18000	1	56	PIPE COUPLING	AE06	15079	1
18 *	ROLLER BEARING	23528-005	----	1	57	OIL LEVEL DECAL	38816-123	----	1
19	VENTED PIPE PLUG	38649-009	15079	1	58	FLAT WASHER	K10	15991	1
20 *	IMPELLER SHAFT	38512-522	17040	1	59	LOCK WASHER	J10	15991	1
21 *	BALL BEARING	23413-015	----	2	60	BOTTLE OILER	26713-004	----	1
22	LOCKING TAB WASHER	23962-515	----	1	61	RD HD MACHINE SCREW	X0405	15991	2
23 *	BEARING CAP O-RING	25152-249	----	1	62	LOCK WASHER	J04	15991	2
24	BEARING LOCKNUT	23962-015	----	1	63	BOTTLE OILER BRKT	41881-811	24150	1
25	BEARING CAP	38322-429	10000	1	64	MALE CONNECTOR	26523-409	----	2
26	HEX HD CAPSCREW	B0605	15991	6	65	3/8" I.D. X 11" LG HOSE	18513-054	----	1
27 *	SHIM SET	48261-055	----	1	66	HOSE CLAMP	26518-642	----	2
28 *	SHAFT KEY	N1016	15990	1	NOT SHOWN:				
29 *	BEARING CAP OIL SEAL	25258-845	----	1		STRAINER	46641-012	24150	1
30	PIPE PLUG	P04	15079	1		INSTRUCTION TAG	38817-024	----	1
31	SIGHT GAUGE	S1471	----	2		SUCTION DECAL	6588AG	----	1
32	RETAINING RING	24124-057	----	1		DISCHARGE DECAL	6588BJ	----	1
33 *	BEARING CAP OIL SEAL	25258-845	----	1		LUBRICATION DECAL	38816-079	----	2
34	STUD	C1013	15991	3		ROTATION DECAL	2613M	----	1
35	HEX NUT	D10	15991	3		INSTRUCTION TAG	38817-011	----	1
36 *	SEAL PLATE OIL SEAL	25258-845	----	1		G-R DECAL	GR-03	----	1
37	PIPE PLUG	P24	10009	1		WARNING DECAL	2613FE	----	1
38 *	SUCT HEAD WEAR RING	4181A	14000	1		NAME PLATE	2613D	13990	1
39	SPIRAL PIN	21137-123	----	3		DRIVE SCREW	BM#04-03	17000	4

\* INDICATES PARTS RECOMMENDED FOR STOCK

**THE GORMAN-RUPP COMPANY • MANSFIELD, OHIO**

GORMAN-RUPP OF CANADA LIMITED • ST. THOMAS, ONTARIO, CANADA Printed in U.S.A.



**PARTS LIST**  
**46112-707 Priming Chamber**

ITEM NO.	PART NAME	PART NUMBER	MAT'L CODE	QTY
1	PRIMING VALVE	26664-007	---	1
2	-ORIFICE BUTTON	26688-021	---	REF
3	HEX HD CAPSCREW	B0806	15991	8
4	LOCK WASHER	J08	15991	8
5	* PRIMING VALVE GSKT	38683-657	19060	1
6	HEX HD CAPSCREW	B0605	15991	12
7	LOCK WASHER	J06	15991	12
8	PRIMING CHAMBER LID	38346-618	10000	1
9	* LINEAR O-RING	38689-040	---	1
10	PRIMING CHAMBER	38343-018	10000	1
11	STRAINER ASSY	46641-222	17000	1

\* INDICATES PARTS RECOMMENDED FOR STOCK

**THE GORMAN-RUPP COMPANY • MANSFIELD, OHIO**

GORMAN-RUPP OF CANADA LIMITED • ST. THOMAS, ONTARIO, CANADA

Printed in U.S.A.



**For U.S. and International Warranty Information,  
Please Visit [www.grpumps.com/warranty](http://www.grpumps.com/warranty)  
or call:  
U.S.: 419-755-1280  
International: +1-419-755-1352**

**For Canadian Warranty Information,  
Please Visit [www.grcanada.com/warranty](http://www.grcanada.com/warranty)  
or call:  
519-631-2870**