



PRIME-AIRE[®] **SERIES**
PUMP MODEL
PA12A60-B-BF6L

MANUAL
PART 2 of 3

PARTS
LIST
WITH
PERFORMANCE CURVE

THE GORMAN-RUPP COMPANY • MANSFIELD, OHIO

GORMAN-RUPP OF CANADA LIMITED • ST. THOMAS, ONTARIO, CANADA Printed in U.S.A.

www.grpumps.com

©Copyright by the Gorman-Rupp Company

Register your new
Gorman-Rupp pump online at
www.grpumps.com

Valid serial number and e-mail address required.



The engine exhaust from this product contains chemicals known to the State of California to cause cancer, birth defects or other reproductive harm.

RECORD YOUR PUMP MODEL AND SERIAL NUMBER

Please record your pump model and serial number in the spaces provided below. Your Gorman-Rupp distributor needs this information when you require parts or service.

Pump Model: _____

Serial Number: _____

PERFORMANCE CURVE – SECTION A

RECORDING MODEL AND SERIAL NUMBERS

Please record the pump model and serial number in the spaces provided below and in the separate Installation/Operation Manual accompanying your pump. Your Gorman-Rupp distributor needs this information when you require parts or service.

Pump Model: _____

Serial Number: _____

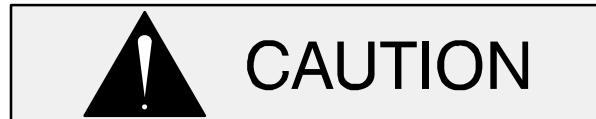
WARRANTY INFORMATION

The pump warranty is provided as part of Gorman-Rupp's support program for customers who operate and maintain their equipment as described in this manual and other accompanying literature. Please note that should the equipment be abused or modified to change its performance beyond the original factory specifications, the warranty will become void and any claim will be denied.

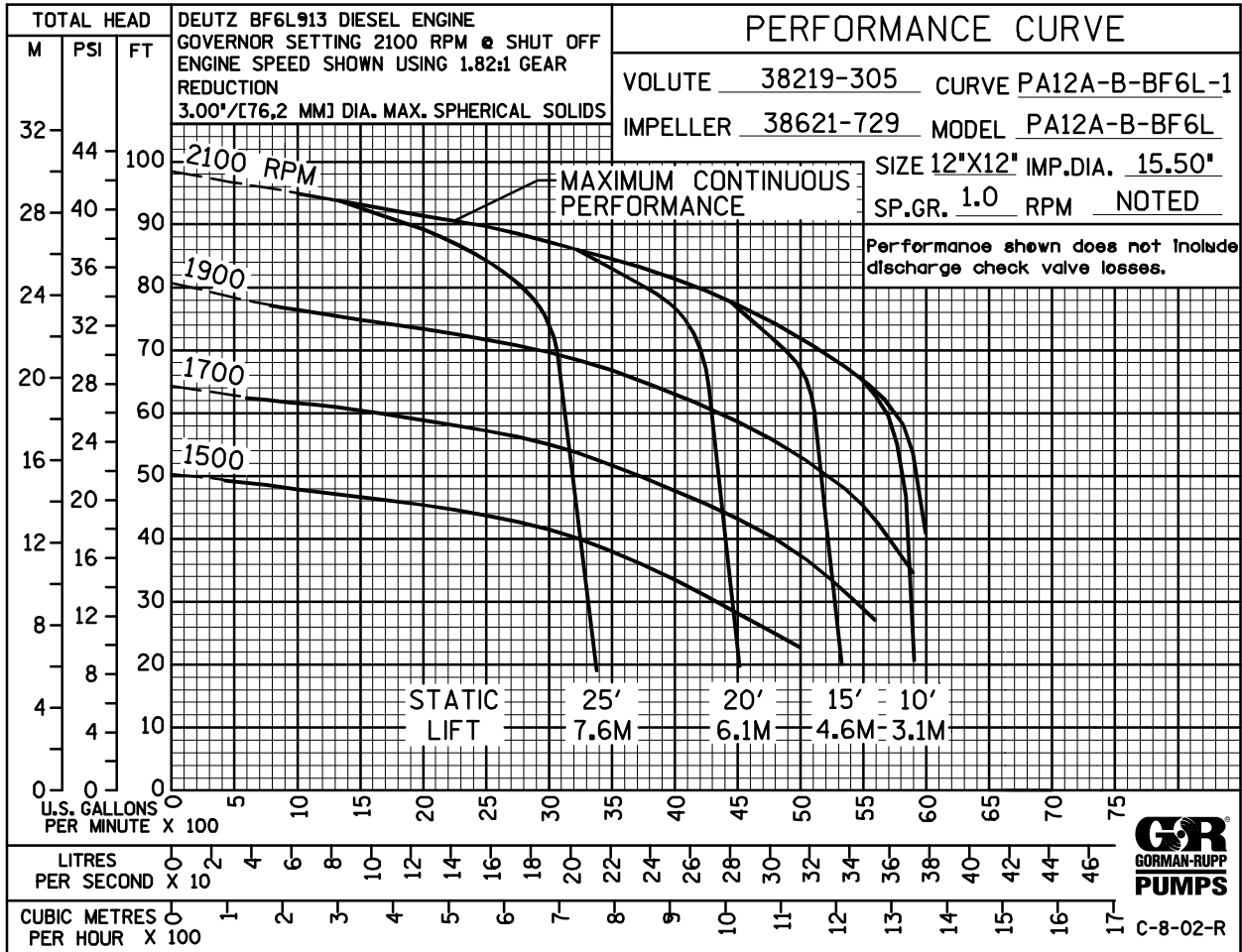
PERFORMANCE CURVE

The performance curve on the following page is based on 70° F (21° C) clear water at sea level with minimum suction lift. Since pump installations are seldom identical, your performance may be different due to such factors as viscosity, specific gravity, elevation, temperature, and impeller trim.

If your pump serial number is followed by an "N", your pump is **NOT** a standard production model. Contact the Gorman-Rupp Company to verify performance or part numbers.

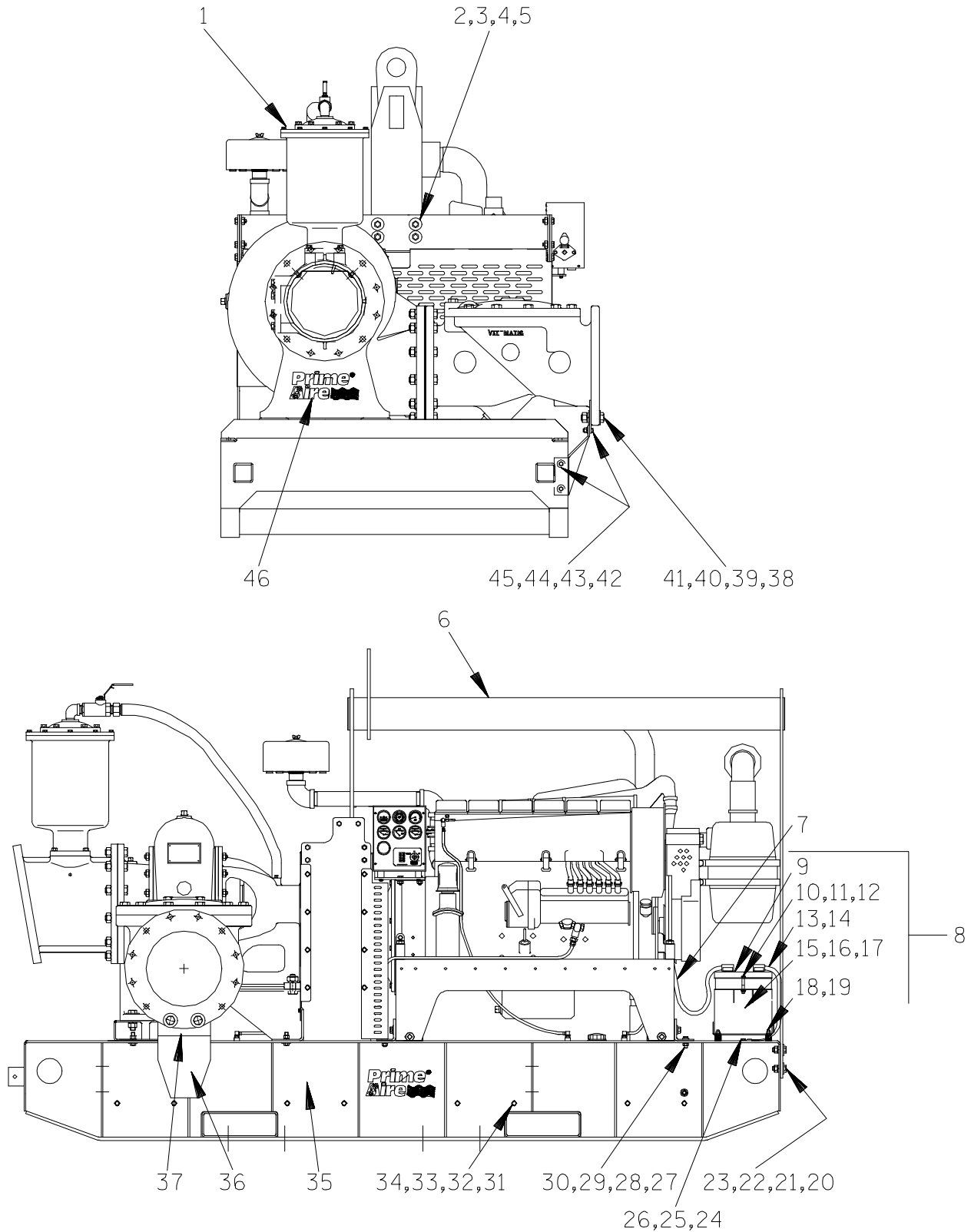


Pump speed and operating condition points must be within the continuous performance range shown on the curve.



Performance Curve – Model PA12A60–B–BF6L

This Page Intentionally Blank



THE GORMAN-RUPP COMPANY • MANSFIELD, OHIO

GORMAN-RUPP OF CANADA LIMITED • ST. THOMAS, ONTARIO, CANADA

Printed in U.S.A.

S/N 1299486 Up
PUMP ISSUE 4

PARTS LIST
Pump Model PA12A60-B-BF6L

If your pump serial number is followed by an "N", your pump is **NOT** a standard production model. Contact the Gorman-Rupp Company to verify part numbers.

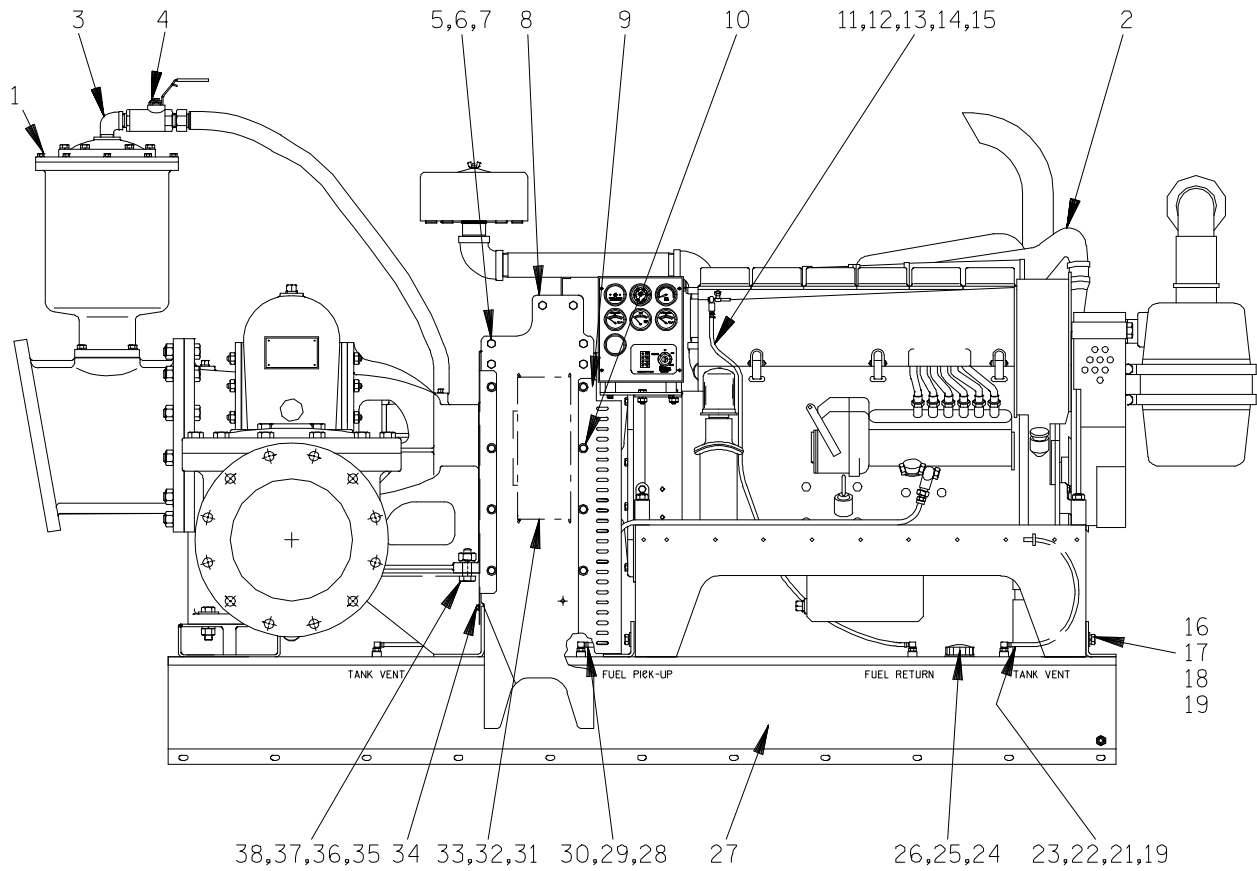
ITEM NO.	PART NAME	PART NUMBER	MAT'L CODE	QTY	ITEM NO.	PART NAME	PART NUMBER	MAT'L CODE	QTY
1	PUMP SUB-ASSEMBLY	46133-651	---	1	29	LOCK WASHER	J08	15991	12
2	HEX HD CAPSCREW	B1008	15991	4	30	HEX NUT	D08	15991	12
3	FLAT WASHER	K10	15991	4	31	HEX HD CAPSCREW	B0808	15991	16
4	LOCK WASHER	J10	15991	4	32	FLAT WASHER	21161-501	---	32
5	HEX NUT	D10	15991	4	33	LOCK WASHER	J08	15991	16
6	LIFT BAIL ASSY	44721-029	24150	1	34	HEX NUT	D08	15991	16
7	POS BATTERY CABLE	47311-118	---	1	35	COMBO BASE	41565-585	24150	1
8	BATTERY BOX ASSEMBLY	GRP40-08C	---	1	36	CV SUPPORT BRKT	41881-604	24150	1
9	-HEX HD CAPSCREW	B0607	15991	2	37	CHECK VALVE SUPPORT	33643-131	15080	1
10	-FLAT WASHER	K06	15991	2	38	HEX HD CAPSCREW	B1412	15991	2
11	-FLANGED HEX NUT	21765-314	---	2	39	FLAT WASHER	K14	15991	4
12	-GRD CABLE ASSEMBLY	47311-064	---	1	40	LOCK WASHER	J14	15991	2
13	-T-TYPE LOCKWASHER	BL06	15991	1	41	HEX NUT	D14	15991	2
14	-BATTERY BOX LID	42113-012	24150	1	42	HEX HD CAPSCREW	B0705	15991	4
15 *	-12V BATTERY	SEE OPTIONS		1	43	FLAT WASHER	K07	15991	6
16	-BATTERY TAG	38818-506	---	1	44	LOCK WASHER	J07	15991	4
17	-BATTERY BOX ASSY	42431-030	24150	1	45	HEX NUT	D07	15991	4
18	-STUD MOUNT	24631-006	---	4	46	PRIME AIRE DECAL	38812-078	---	3
19	-FLANGED HEX NUT	21765-314	---	10		NOT SHOWN:			
20	HEX HD CAPSCREW	B1007	15991	4		STRAINER	46641-012	24150	1
21	FLAT WASHER	K10	15991	4		CABLE TIE	27111-218	---	1
22	LOCKWASHER	J10	15991	4		FLOAT SWITCH KIT	48312-980	---	1
23	HEX NUT	D10	15991	4		OPTIONAL:			
24	HEX HD CAPSCREW	B0604	15991	1		* 12V BATTERY	29331-506	---	1
25	HEX NUT	D06	15991	1		WHEEL KIT	GRP30-254	---	1
26	LOCK WASHER	J06	15991	1		2 FLOAT SWITCH KIT	48312-981	---	1
27	HEX HD CAPSCREW	B0807	15991	12					
28	FLAT WASHER	21161-501	---	12					

* INDICATES PARTS RECOMMENDED FOR STOCK

THE GORMAN-RUPP COMPANY • MANSFIELD, OHIO

GORMAN-RUPP OF CANADA LIMITED • ST. THOMAS, ONTARIO, CANADA

Printed in U.S.A.



THE GORMAN-RUPP COMPANY • MANSFIELD, OHIO

GORMAN-RUPP OF CANADA LIMITED • ST. THOMAS, ONTARIO, CANADA

Printed in U.S.A.

S/N 1299486 Up
PUMP ISSUE 4

PARTS LIST
Pump Sub-Assembly

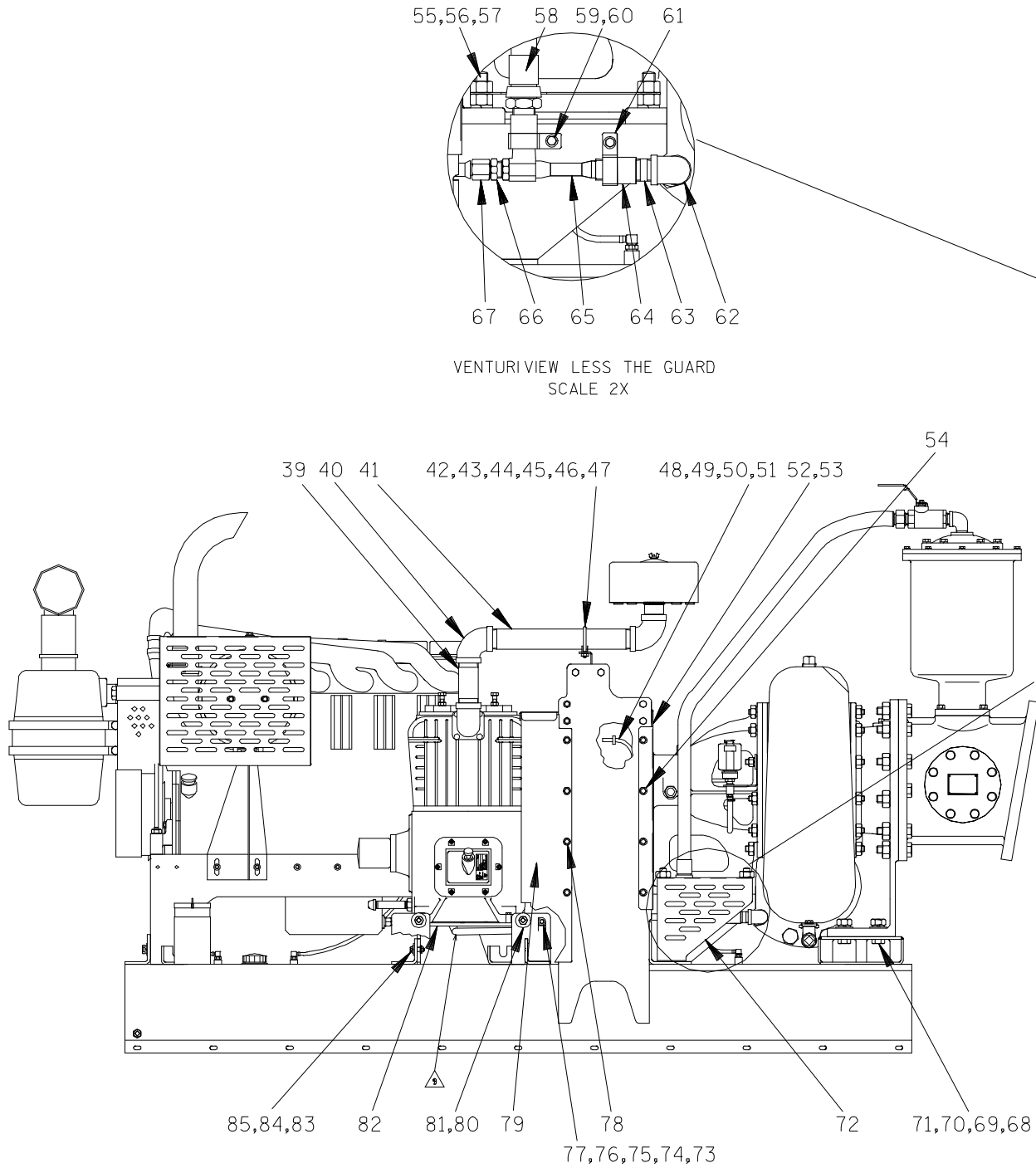
ITEM NO.	PART NAME	PART NUMBER	MAT'L CODE	QTY	ITEM NO.	PART NAME	PART NUMBER	MAT'L CODE	QTY
1	PUMP ASSEMBLY	PA12A60—B	----	1	20	FUEL LINE	11308F	----	1
2	ENGINE MOD ASSY	44311—008	----	1	21	HOSE CLAMP	26518—641	----	1
3	STREET ELBOW	RS16	11999	1	22	MALE CONNECTOR	26523—463	----	1
4	BALL VALVE	26631—054	----	1	23	REDUCING BUSHING	AP0604	15079	1
5	HEX HD CAPSCREW	B0806	15991	12	24	FLANGE W/GASKET	29332—151	----	1
6	LOCK WASHER	J08	15991	12	25	FUEL GAUGE	29332—132	----	1
7	HEX NUT	D08	15991	12	26	#10 TAPSCREW	21281—444	----	6
8	HOIST BAIL SUB ASSY	44718—032	24150	1	27	FUEL TANK ASSY	46711—068	----	1
9	ENGINE SIDE GUARD	34226—007	15120	1	28	FUEL PICKUP	29332—142	----	1
10	FLANGE HD CAPSCREW	21634—515	----	4	29	HOSE ASSY	46341—796	----	1
11	FUEL LINE	11308K	----	1	30	MALE CONNECTOR	S1447	----	1
12	HOSE CLAMP	26518—641	----	2	31	PUMP DRIVE BELT	24154—001	----	1
13	HOSE BARB FITTING	26523—443	----	1	32	SPROCKET	24271—003	----	1
14	MALE CONNECTOR	26523—463	----	1	33	BUSHING	24131—535	----	1
15	REDUCING BUSHING	AP0604	15079	1	34	FLANGE HD CAPSCREW	21634—505	----	5
16	HEX HD CAPSCREW	B0807	15991	6	35	HEX HD CAPSCREW	B1211	15991	2
17	LOCK WASHER	J08	15991	6	36	HEX NUT	D12	15991	2
18	SQUARE WASHER	21168—025	----	6	37	LOCK WASHER	J12	15991	2
19	ENGINE SHIM SET	48261—045	----	6	38	FLAT WASHER	K12	15991	4

* INDICATES PARTS RECOMMENDED FOR STOCK

THE GORMAN-RUPP COMPANY • MANSFIELD, OHIO

GORMAN-RUPP OF CANADA LIMITED • ST. THOMAS, ONTARIO, CANADA

Printed in U.S.A.



THE GORMAN-RUPP COMPANY • MANSFIELD, OHIO

GORMAN-RUPP OF CANADA LIMITED • ST. THOMAS, ONTARIO, CANADA

Printed in U.S.A.

S/N 1299486 Up
PUMP ISSUE 4

PARTS LIST
Pump Sub-Assembly

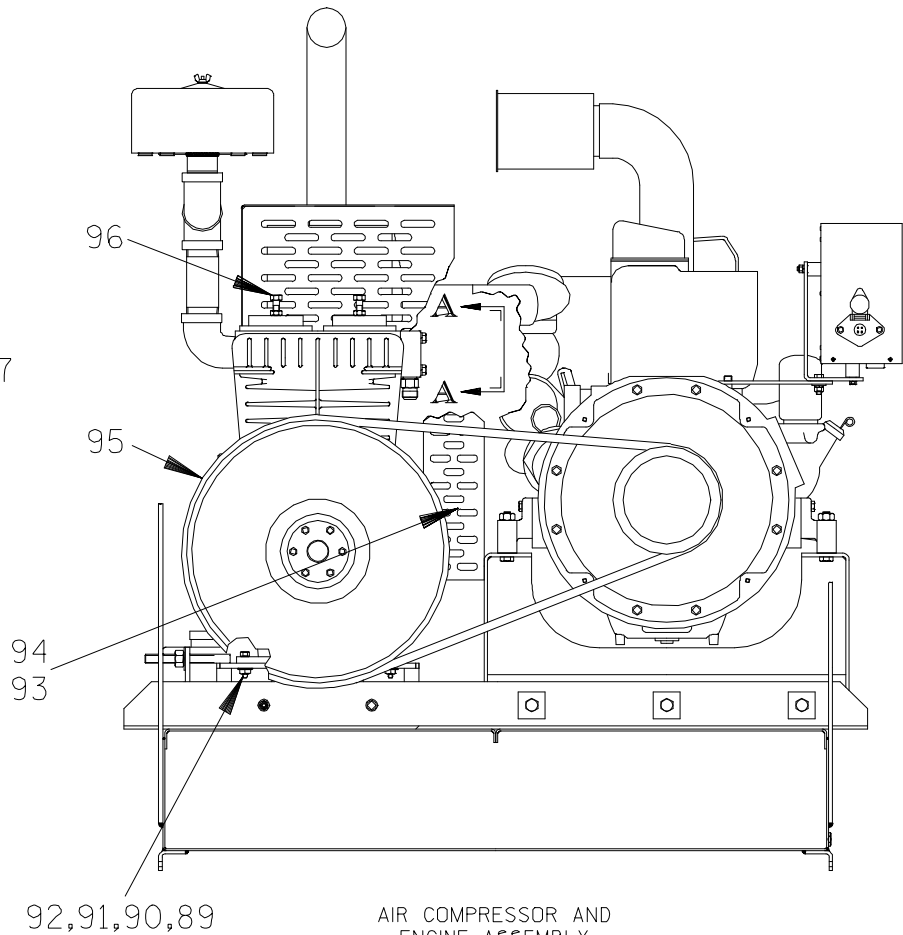
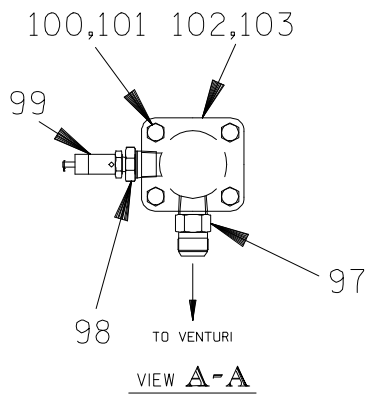
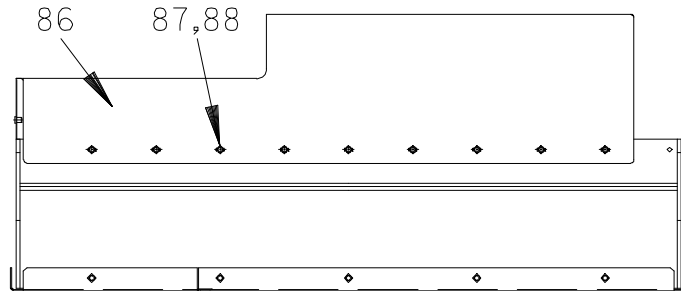
ITEM NO.	PART NAME	PART NUMBER	MAT'L CODE	QTY	ITEM NO.	PART NAME	PART NUMBER	MAT'L CODE	QTY
39	PIPE NIPPLE	T3224	15079	1	63	1" X 2" PIPE	T1608	15079	1
40	PIPE ELBOW	R32	11999	2	64	1" PIPE COUPLING	AE16	15079	2
41	PIPE NIPPLE	T3272	15079	1	65	VENTURI	26817-001	----	1
42	PIPE SUPPORT BRACKET	34265-032	15120	1	66	HOSE FITTING	26341-128	----	1
43	MUFFLER CLAMP	29334-261	----	1	67	AIR COMP HOSE ASSY	46341-022	----	1
44	HEX HD CAPSCREW	B0805	15991	1	68	HEX HD CAPSCREW	B1211	15991	4
45	HEX NUT	D08	15991	1	69	HEX NUT	D12	15991	4
46	LOCK WASHER	J08	15991	1	70	LOCK WASHER	J12	15991	4
47	FLAT WASHER	K08	15991	1	71	FLAT WASHER	K12	15991	4
48	FUEL LINE	11308F	----	1	72	VENTURI GUARD	34518-020	15120	1
49	HOSE CLAMP	26518-641	----	1	73	CLAMP	22811-422	----	1
50	MALE CONNECTOR	26523-463	----	1	74	HEX HD CAPSCREW	B0503-1/2	15991	1
51	REDUCING BUSHING	AP0604	15079	1	75	FLAT WASHER	K05	15991	1
52	PUMP END ASSY GUARD	42381-077	----	1	76	LOCK WASHER	J05	15991	1
53	PUMP END GUARD	34266-022	15120	1	77	HEX NUT	D05	15991	1
54	FLANGE HD CAPSCREW	21634-515	----	4	78	FLANGE HD CAPSCREW	21634-515	----	8
55	HEX HD CAPSCREW	B1214	15991	2	79	FLYWHEEL GUARD	34518-016	15120	1
56	HEX NUT	D12	15991	4	80	HEX NUT	D10	15991	4
57	LOCK WASHER	J12	15991	2	81	FLAT WASHER	K10	15991	4
58	VACUUM HOSE ASSY	46341-021	----	1	82	AIR COND MTG BRACKET	41881-529	24150	1
59	HEX HD CAPSCREW	B0504	15991	2	83	HEX HD CAPSCREW	B0606	15991	4
60	LOCK WASHER	J05	15991	2	84	LOCK WASHER	J06	15991	4
61	STRAP	22811-259	----	2	85	SQUARE WASHER	21168-023	----	4
62	PIPE ELBOW	R16	15079	1					

* INDICATES PARTS RECOMMENDED FOR STOCK

THE GORMAN-RUPP COMPANY • MANSFIELD, OHIO

GORMAN-RUPP OF CANADA LIMITED • ST. THOMAS, ONTARIO, CANADA

Printed in U.S.A.



AIR COMPRESSOR AND
ENGINE ASSEMBLY
END VIEW

THE GORMAN-RUPP COMPANY • MANSFIELD, OHIO

GORMAN-RUPP OF CANADA LIMITED • ST. THOMAS, ONTARIO, CANADA

Printed in U.S.A.

S/N 1299486 Up
PUMP ISSUE 4

PARTS LIST
Pump Sub-Assembly

ITEM NO.	PART NAME	PART NUMBER	MAT'L CODE	QTY
86	TOP GUARD	34263—003	15120	1
87	FLANGE HD CAPSCREW	21634—505	----	16
88	THD INSERT .250—20	21769—156	----	14
89	HEX HD CAPSCREW	B0809	15991	4
90	LOCK WASHER	J08	15991	4
91	FLAT WASHER	K08	15991	4
92	HEX NUT	D08	15991	4
93	BELT GUARD	34224—022	15120	1
94	FLANGE HD CAPSCREW	21634—505	----	2
95	AIR COMPRESSOR BELT	24166—001	----	2
96	AIR COMPRESSOR ASSY	46181—901	----	1
97	MALE ADAPTOR	26341—108	----	1
98	RED PIPE BUSHING	AP1204	15079	1
99	PRESS RELIEF VALVE	26662—027	----	1
100	HEX HD CAPSCREW	B0709	15991	4
101	LOCK WASHER	J07	15991	4
102	DISTRIBUTION BLOCK	34346—616	10000	1
103	GASKET	26813—908	----	1

NOT SHOWN:

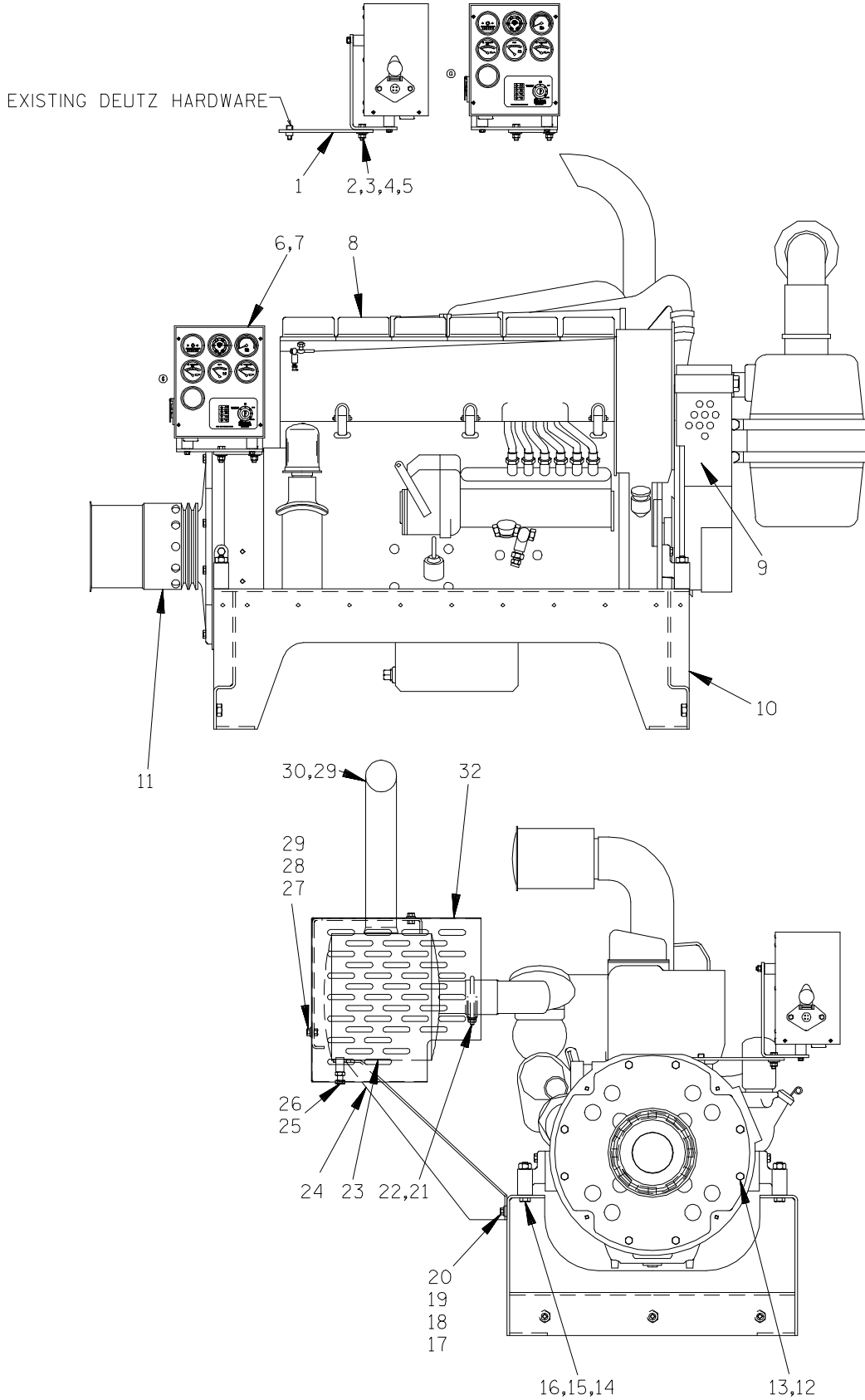
GRD WARNING STICKER	38816—063	----	2
G-R DECAL	GR—06	----	3
WARNING DECAL	38816—330	----	2
WARNING DECAL	38816—218	----	2
CAUTION DECAL	2613FJ	----	1
INSTRUCTION DECAL	38818—144	----	1
ENGINE STARTUP TAG	38816—269	----	1
WARNING DECAL	38816—203	----	2

* INDICATES PARTS RECOMMENDED FOR STOCK

THE GORMAN-RUPP COMPANY • MANSFIELD, OHIO

GORMAN-RUPP OF CANADA LIMITED • ST. THOMAS, ONTARIO, CANADA

Printed in U.S.A.



THE GORMAN-RUPP COMPANY • MANSFIELD, OHIO

GORMAN-RUPP OF CANADA LIMITED • ST. THOMAS, ONTARIO, CANADA

Printed in U.S.A.

S/N 1299486 Up
PUMP ISSUE 4

PARTS LIST
Engine Modification Assembly

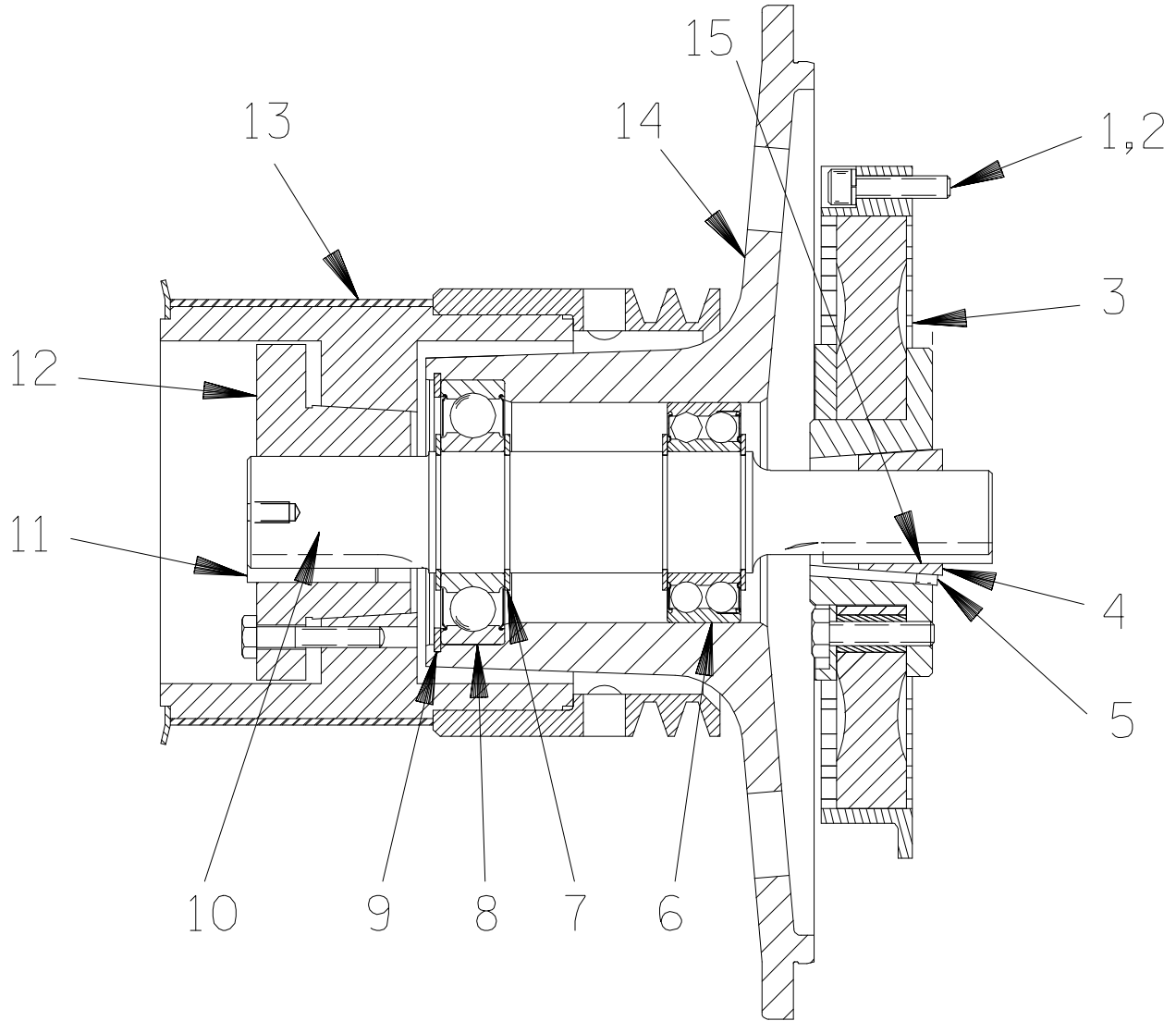
ITEM NO.	PART NAME	PART NUMBER	MAT'L CODE	QTY
1	CTRL PANEL MOUNT	33541—059	15120	1
2	HEX HD CAPSCREW	B0605	15991	2
3	LOCK WASHER	J06	15991	2
4	FLAT WASHER	K06	15991	2
5	HEX NUT	D06	15991	2
6	CAUTION DECAL	2613FJ	----	1
7	CONT PANEL MTG KIT	48122—513	----	1
8	DEUTZ BF6L ENGINE	29217—101	----	1
9	BELT GUARD ASY	42353—026	----	1
10	PEDESTAL MTG BRKT	41414—012	----	1
11	DRIVE ASSY	44162—152	----	1
12	HEX HD CAPSCREW	22645—164	----	8
13	LOCK WASHER	21171—511	----	8
14	HEX HD CAPSCREW	B0814	15991	4
15	LOCK WASHER	J08	15991	4
16	HEX NUT	K08	15991	4
17	HEX HD CAPSCREW	B0604—1/2	15991	2
18	LOCK WASHER	J06	15991	2
19	FLAT WASHER	K06	15991	2
20	HEX NUT	D06	15991	2
21	MUFFLER CLAMP	29334—264	----	1
22	MANIFOLD PIPE ASSY	46281—005	24150	1
23	MUFFLER ASSY	46211—027	24150	1
24	MFLR SUPT BRKT ASSY	41824—009	24150	1
25	HEX HD CAPSCREW	B0807	15991	3
26	HEX JAM NUT	AT08	15991	3
27	HEX HD CAPSCREW	B0603	15991	3
28	LOCK WASHER	J06	15991	1
29	FLAT WASHER	K06	15991	1
30	MUFFLER CLAMP	29334—264	----	1
31	EXHAUST PIPE	31911—004	15000	1
32	MUFFLER GRD ASSY	42331—045	24150	1

* INDICATES PARTS RECOMMENDED FOR STOCK

THE GORMAN-RUPP COMPANY • MANSFIELD, OHIO

GORMAN-RUPP OF CANADA LIMITED • ST. THOMAS, ONTARIO, CANADA

Printed in U.S.A.



THE GORMAN-RUPP COMPANY • MANSFIELD, OHIO

GORMAN-RUPP OF CANADA LIMITED • ST. THOMAS, ONTARIO, CANADA

Printed in U.S.A.

May 11, 2004
Rev. A 05-21-07

©Copyright by the Gorman-Rupp Company

11 of 18
Page 64.12 A2

S/N 1299486 Up
PUMP ISSUE 4

PARTS LIST
Engine Drive Assembly

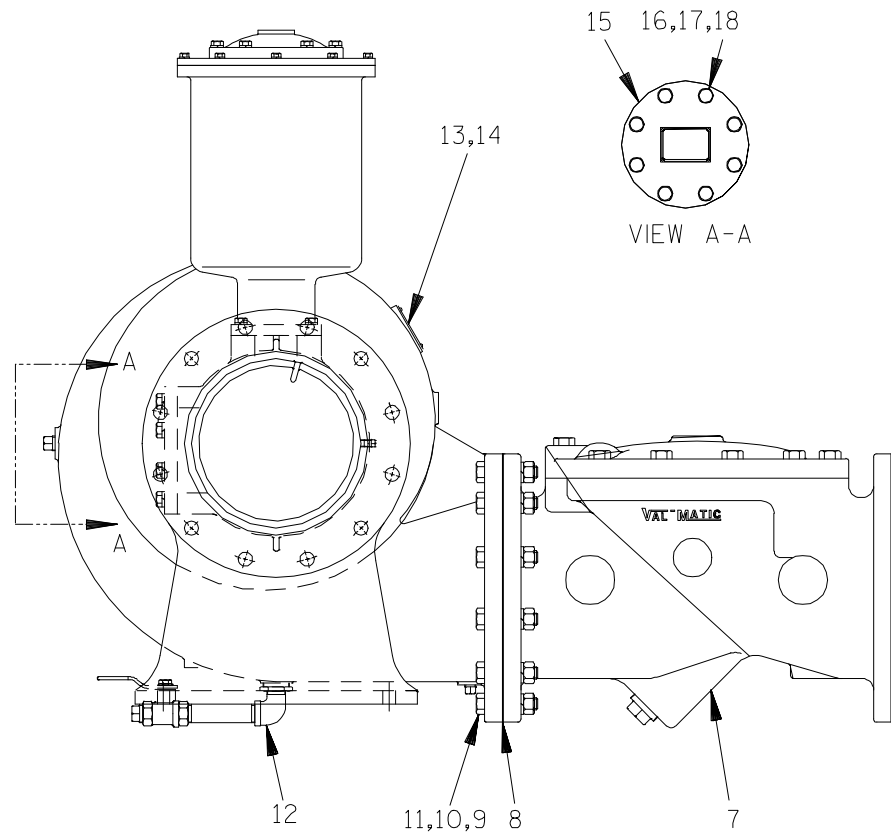
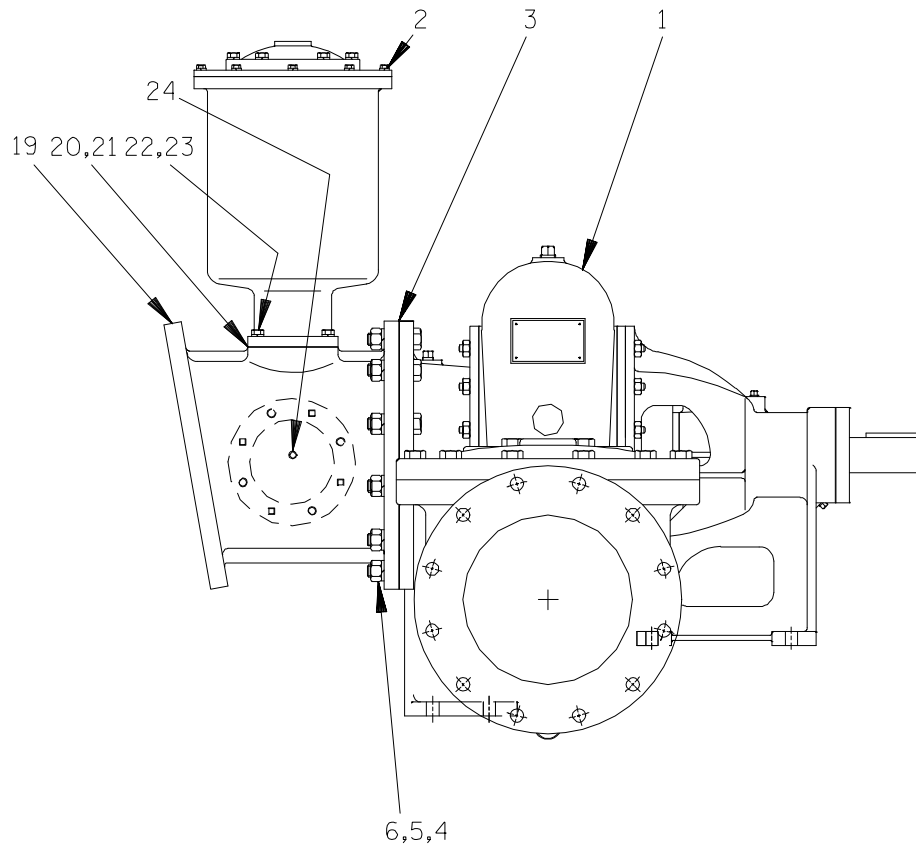
ITEM NO.	PART NAME	PART NUMBER	MAT'L CODE	QTY
1	SOCKET HEAD CAPSCREW	22644—220	---	8
2	LOCKWASHER	21171—536	---	8
3	COUPLING W/O BUSHING	24391—103	---	1
4	BUSHING	24131—496	---	1
5	—ALLEN HD SETSCREW	GA0703—1/2	15990	2
6	* BALL BEARING	23431—012	---	1
7	RETAINING RING	S215	---	4
8	* BALL BEARING	23282—012	---	1
9	RETAINING RING	24121—075	---	1
10	OUTPUT SHAFT	38512—051	1706H	1
11	* OUTPUT SHAFT KEY (DRIVE END)	N0807	15990	1
12	TAPERLOCK BUSHING	24131—526	---	1
13	DRIVE SPROCKET	44162—901	---	1
14	BEARING HOUSING	38251—001	11010	1
15	* OUTPUT SHAFT KEY (DRIVEN END)	N0612	15990	1

* INDICATES PARTS RECOMMENDED FOR STOCK

THE GORMAN-RUPP COMPANY • MANSFIELD, OHIO

GORMAN-RUPP OF CANADA LIMITED • ST. THOMAS, ONTARIO, CANADA

Printed in U.S.A.



THE GORMAN-RUPP COMPANY • MANSFIELD, OHIO

GORMAN-RUPP OF CANADA LIMITED • ST. THOMAS, ONTARIO, CANADA

Printed in U.S.A.

S/N 1299486 Up
PUMP ISSUE 4

PARTS LIST
PA12A60—B Pump Model Assembly

ITEM NO.	PART NAME	PART NUMBER	MAT'L CODE	QTY
1	PUMP ASSEMBLY	612M60—B	---	1
2	PRIMING CHAMBER ASSEMBLY	46112—707	---	1
3	* FLANGE GASKET	4991G	18000	1
4	HEX HEAD CAPSCREW	B1413	15991	12
5	LOCK WASHER	J14	15991	12
6	HEX NUT	D14	15991	12
7	CHECK VALVE ASSEMBLY	26642—128	---	1
	* —FLAPPER	26688—003	---	1
	* —COVER GASKET	26688—004	---	1
8	* FLANGE GASKET	4991G	18000	1
9	HEX HEAD CAPSCREW	B1415	15991	12
10	LOCK WASHER	J14	15991	12
11	HEX NUT	D14	15991	12
12	DRAIN VALVE ASSEMBLY	46346—262	---	1
13	NAME PLATE	38818—127	13000	1
14	DRIVE SCREW	BM#04—03	17000	4
15	BLIND FLANGE ASSEMBLY	42111—358	---	1
16	HEX HEAD CAPSCREW	B1007	15991	8
17	LOCK WASHER	J10	15991	8
18	* FLANGE GASKET	25113—034	---	1
19	12" SUCTION SPOOL	38642—617	10000	1
20	* GASKET	38687—053	19060	1
21	BAFFLE	31113—011	17000	1
22	HEX HEAD CAPSCREW	B0807	15991	4
23	LOCK WASHER	J08	15991	4
24	PIPE PLUG	P04	15079	1

NOT SHOWN:

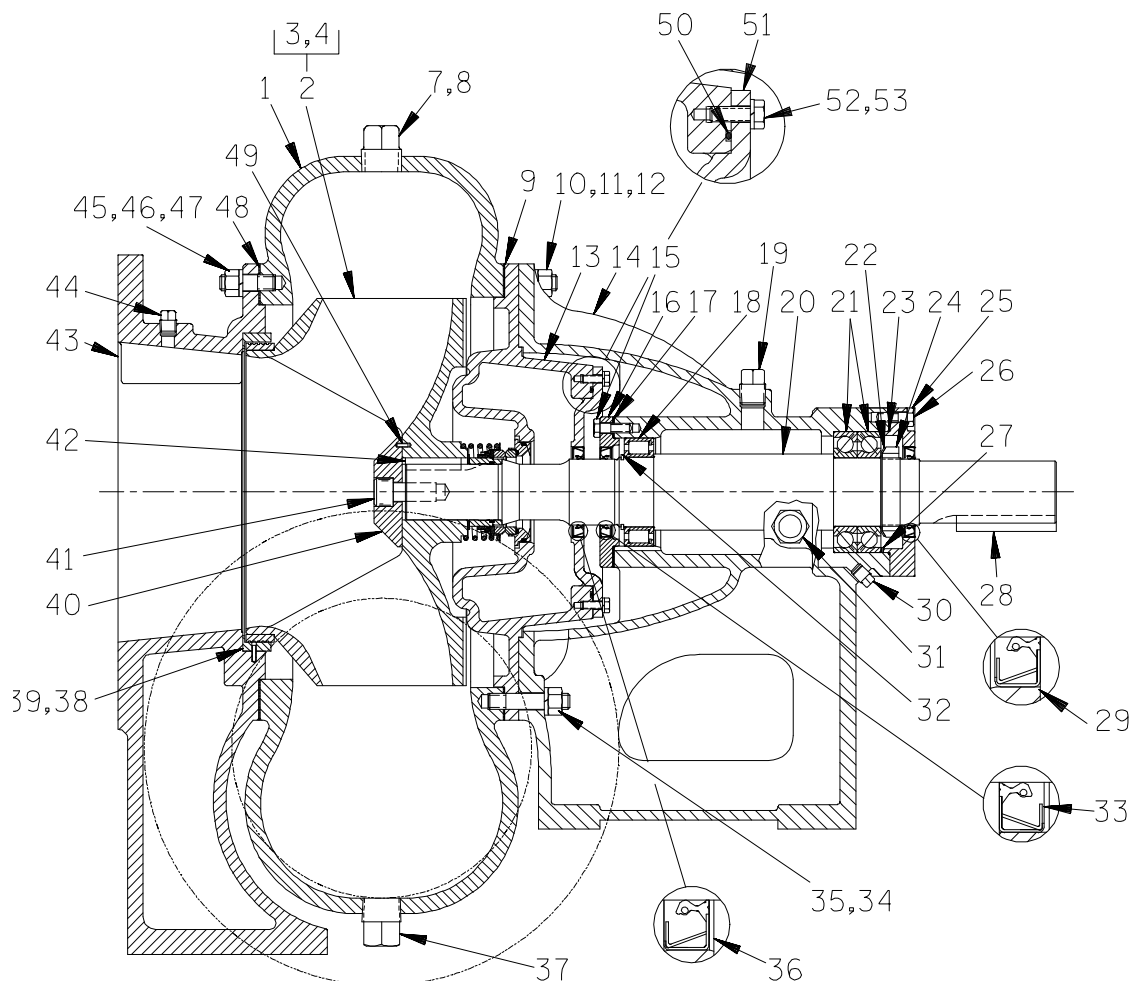
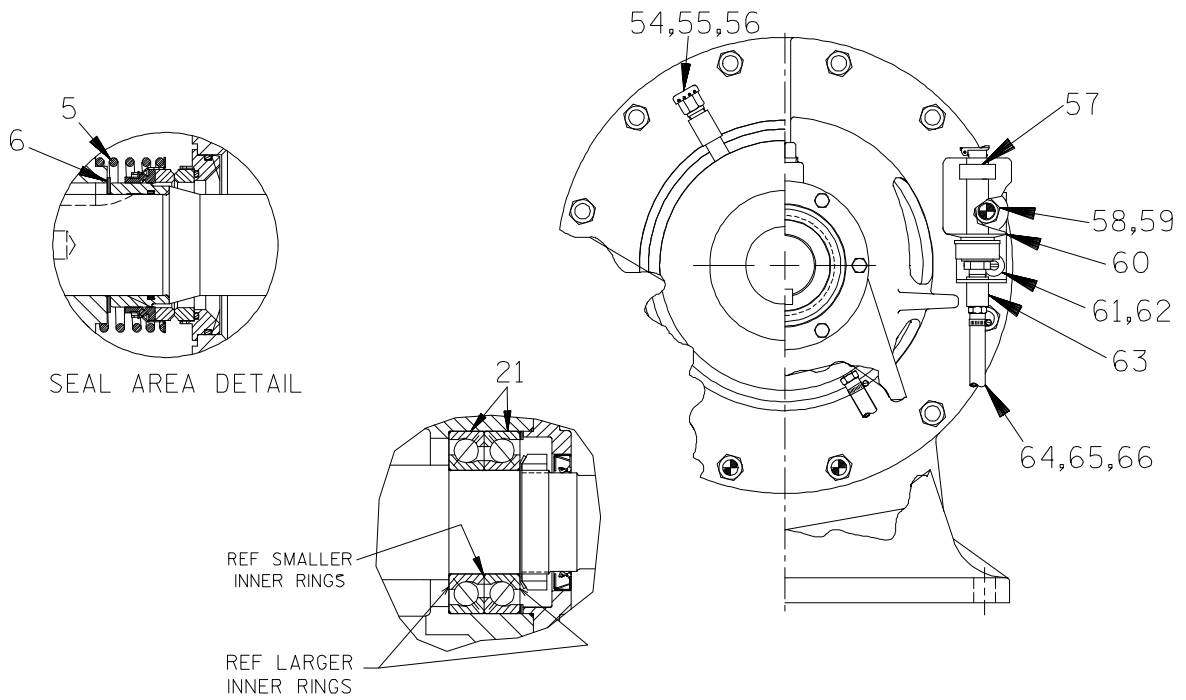
STRAINER	46641—012	24150	1
----------	-----------	-------	---

* INDICATES PARTS RECOMMENDED FOR STOCK

THE GORMAN-RUPP COMPANY • MANSFIELD, OHIO

GORMAN-RUPP OF CANADA LIMITED • ST. THOMAS, ONTARIO, CANADA

Printed in U.S.A.



THE GORMAN-RUPP COMPANY • MANSFIELD, OHIO

GORMAN-RUPP OF CANADA LIMITED • ST. THOMAS, ONTARIO, CANADA

Printed in U.S.A.

S/N 1299486 Up
PUMP ISSUE 4

PARTS LIST
612M60—B Pump Model Assembly

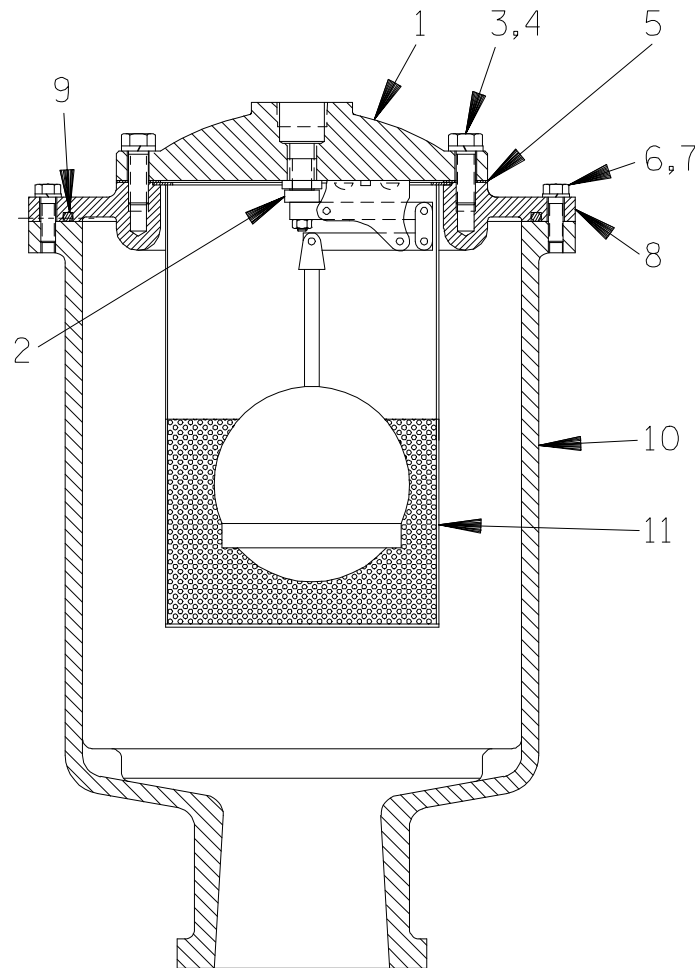
ITEM NO.	PART NAME	PART NUMBER	MAT'L CODE	QTY	ITEM NO.	PART NAME	PART NUMBER	MAT'L CODE	QTY
1	PUMP CASING	38219-305	10010	1	40	IMPELLER WASHER	31167-022	15030	1
2	IMPELLER/WR RING ASSY	46151-022	24110	1	41	SOCKET HD CAPSCREW	BD1206	15990	1
3	-IMPELLER	NOT AVAILABLE		1	42 *	IMPELLER KEY	N0809	15990	1
4 *	-WEAR RING	4182A	11030	1	43	SUCTION HEAD	4180	10010	1
5 *	MECHANICAL SEAL	46512-109	----	1	44	PIPE PLUG	P06	15079	1
6 *	IMP ADJ SHIM SET	48261-033	----	1	45	STUD	C1009	15991	12
7	PIPE PLUG	P12	15079	2	46	HEX NUT	D10	15991	12
8	PIPE PLUG	P06	15079	1	47	LOCK WASHER	J10	15991	12
9 *	CASING GASKET	38674-434	18000	1	48 *	SUCTION HEAD GASKET	4180G	18000	1
10	STUD	C1011	15991	9	49	ROLL PIN	S2197	----	1
11	HEX NUT	D10	15991	9	50 *	COVER O-RING	25151-266	----	1
12	LOCK WASHER	J10	15991	9	51	SEAL PLATE COVER	38242-708	10000	1
13	SEAL PLATE	38272-717	10000	1	52	HEX HD CAPSCREW	J05	15991	6
14	PEDESTAL	38257-520	10000	1	53	LOCK WASHER	B0503-1/2	15991	6
15	HEX HD CAPSCREW	B0605	15991	6	54	AIR VENT	S1703	----	1
16	BEARING CAP	38322-425	10010	1	55	PIPE NIPPLE	T0608	15079	1
17 *	BEARING CAP GASKET	4184G	18000	1	56	PIPE COUPLING	AE06	15079	1
18 *	ROLLER BEARING	23528-005	----	1	57	OIL LEVEL DECAL	38816-123	----	1
19	VENTED PIPE PLUG	38649-009	15079	1	58	FLAT WASHER	K10	15991	1
20 *	IMPELLER SHAFT	38512-522	17040	1	59	LOCK WASHER	J10	15991	1
21 *	BALL BEARING	23413-015	----	2	60	BOTTLE OILER	26713-004	----	1
22	LOCKING TAB WASHER	23962-515	----	1	61	RD HD MACHINE SCREW	X0405	15991	2
23 *	BEARING CAP O-RING	25152-249	----	1	62	LOCK WASHER	J04	15991	2
24	BEARING LOCKNUT	23962-015	----	1	63	BOTTLE OILER BRKT	41881-811	24150	1
25	BEARING CAP	38322-429	10000	1	64	MALE CONNECTOR	26523-409	----	2
26	HEX HD CAPSCREW	B0605	15991	6	65	3/8" I.D. X 11" LG HOSE	18513-054	----	1
27 *	SHIM SET	48261-055	----	1	66	HOSE CLAMP	26518-642	----	2
28 *	SHAFT KEY	N1016	15990	1	NOT SHOWN:				
29 *	BEARING CAP OIL SEAL	25258-845	----	1		STRAINER	46641-012	24150	1
30	PIPE PLUG	P04	15079	1		INSTRUCTION TAG	38817-024	----	1
31	SIGHT GAUGE	S1471	----	2		SUCTION DECAL	6588AG	----	1
32	RETAINING RING	24124-057	----	1		DISCHARGE DECAL	6588BJ	----	1
33 *	BEARING CAP OIL SEAL	25258-845	----	1		LUBRICATION DECAL	38816-079	----	2
34	STUD	C1013	15991	3		ROTATION DECAL	2613M	----	1
35	HEX NUT	D10	15991	3		INSTRUCTION TAG	38817-011	----	1
36 *	SEAL PLATE OIL SEAL	25258-845	----	1		G-R DECAL	GR-03	----	1
37	PIPE PLUG	P24	10009	1		WARNING DECAL	2613FE	----	1
38 *	SUCT HEAD WEAR RING	4181A	14000	1		NAME PLATE	2613D	13990	1
39	SPIRAL PIN	21137-123	----	3		DRIVE SCREW	BM#04-03	17000	4

* INDICATES PARTS RECOMMENDED FOR STOCK

THE GORMAN-RUPP COMPANY • MANSFIELD, OHIO

GORMAN-RUPP OF CANADA LIMITED • ST. THOMAS, ONTARIO, CANADA

Printed in U.S.A.



PARTS LIST
46112-707 Priming Chamber

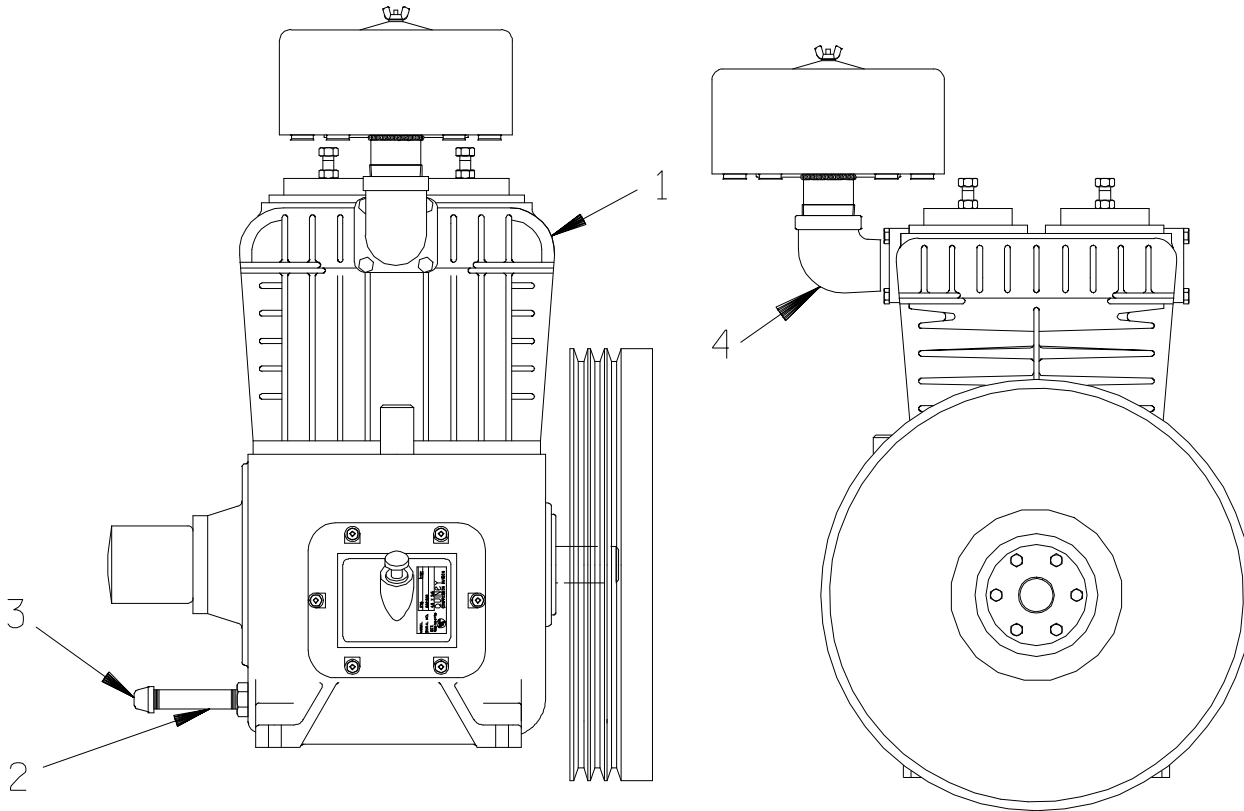
ITEM NO.	PART NAME	PART NUMBER	MAT'L CODE	QTY
1	PRIMING VALVE	26664-007	---	1
2	ORIFICE BUTTON	26688-021	---	REF
3	HEX HD CAPSCREW	B0806	15991	8
4	LOCK WASHER	J08	15991	8
5	* PRIMING VALVE GSKT	38683-657	19060	1
6	HEX HD CAPSCREW	B0605	15991	12
7	LOCK WASHER	J06	15991	12
8	PRIMING CHAMBER LID	38346-618	10000	1
9	* LINEAR O-RING	18512-056	---	3.86'
10	PRIMING CHAMBER	38343-018	10000	1
11	STRAINER ASSY	46641-222	17000	1

* INDICATES PARTS RECOMMENDED FOR STOCK

THE GORMAN-RUPP COMPANY • MANSFIELD, OHIO

GORMAN-RUPP OF CANADA LIMITED • ST. THOMAS, ONTARIO, CANADA Printed in U.S.A.

S/N 1299486 Up
PUMP ISSUE 4



PARTS LIST
Air Compressor Assembly

ITEM NO.	PART NAME	PART NUMBER	MAT'L CODE	QTY
1	AIR COMPRESSOR	26813-101	---	1
*	-AIR FILTER	29334-072	---	1
2	PIPE NIPPLE	T0818	15079	1
3	PIPE CAP	V08	15079	1
4	ST ELBOW	RS32	11999	1

* INDICATES PARTS RECOMMENDED FOR STOCK

THE GORMAN-RUPP COMPANY • MANSFIELD, OHIO

GORMAN-RUPP OF CANADA LIMITED • ST. THOMAS, ONTARIO, CANADA

Printed in U.S.A.

**For U.S. and International Warranty Information,
Please Visit www.grpumps.com/warranty
or call:
U.S.: 419-755-1280
International: +1-419-755-1352**

**For Canadian Warranty Information,
Please Visit www.grcanada.com/warranty
or call:
519-631-2870**