



***PRIME-AIRE***<sup>®</sup> **SERIES**  
**PUMP MODEL**  
**PA12A60-B-BF6L**

**MANUAL**  
**PART 2 of 3**

**PARTS**  
**LIST**  
**WITH**  
**PERFORMANCE CURVE**

**THE GORMAN-RUPP COMPANY • MANSFIELD, OHIO**

**GORMAN-RUPP OF CANADA LIMITED • ST. THOMAS, ONTARIO, CANADA** Printed in U.S.A.

[www.gormanrupp.com](http://www.gormanrupp.com)

©Copyright by the Gorman-Rupp Company



**The engine exhaust from this product contains chemicals known to the State of California to cause cancer, birth defects or other reproductive harm.**

## PERFORMANCE CURVE – SECTION A

### RECORDING MODEL AND SERIAL NUMBERS

Please record the pump model and serial number in the spaces provided below and in the separate Installation/Operation Manual accompanying your pump. Your Gorman-Rupp distributor needs this information when you require parts or service.

Pump Model: \_\_\_\_\_

Serial Number: \_\_\_\_\_

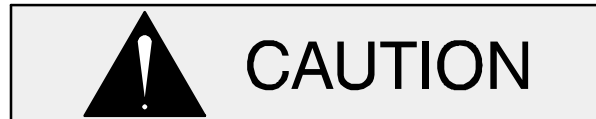
### WARRANTY INFORMATION

The pump warranty is provided as part of Gorman-Rupp's support program for customers who operate and maintain their equipment as described in this manual and other accompanying literature. Please note that should the equipment be abused or modified to change its performance beyond the original factory specifications, the warranty will become void and any claim will be denied.

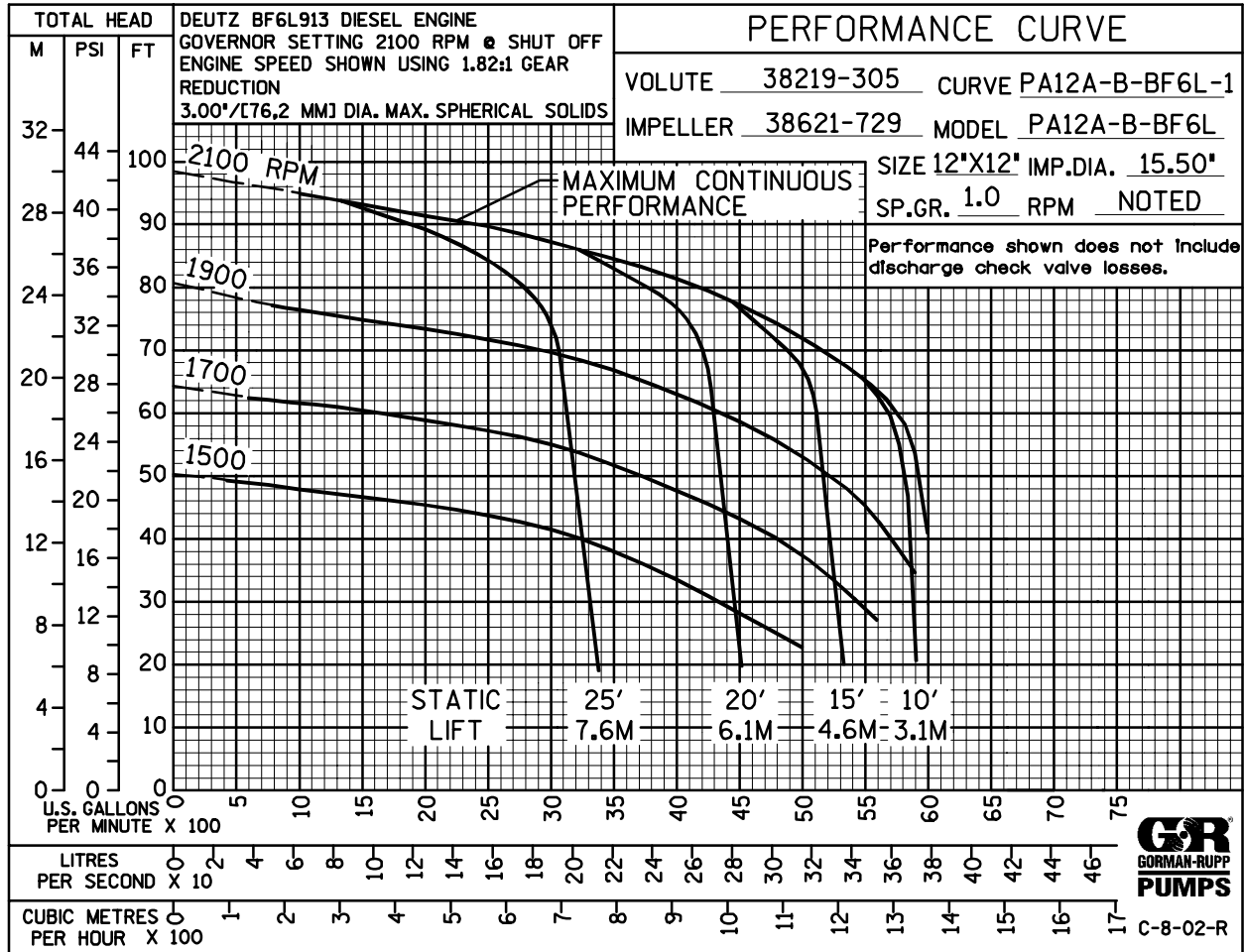
### PERFORMANCE CURVE

The performance curve on the following page is based on 70° F (21° C) clear water at sea level with minimum suction lift. Since pump installations are seldom identical, your performance may be different due to such factors as viscosity, specific gravity, elevation, temperature, and impeller trim.

If your pump serial number is followed by an "N", your pump is **NOT** a standard production model. Contact the Gorman-Rupp Company to verify performance or part numbers.

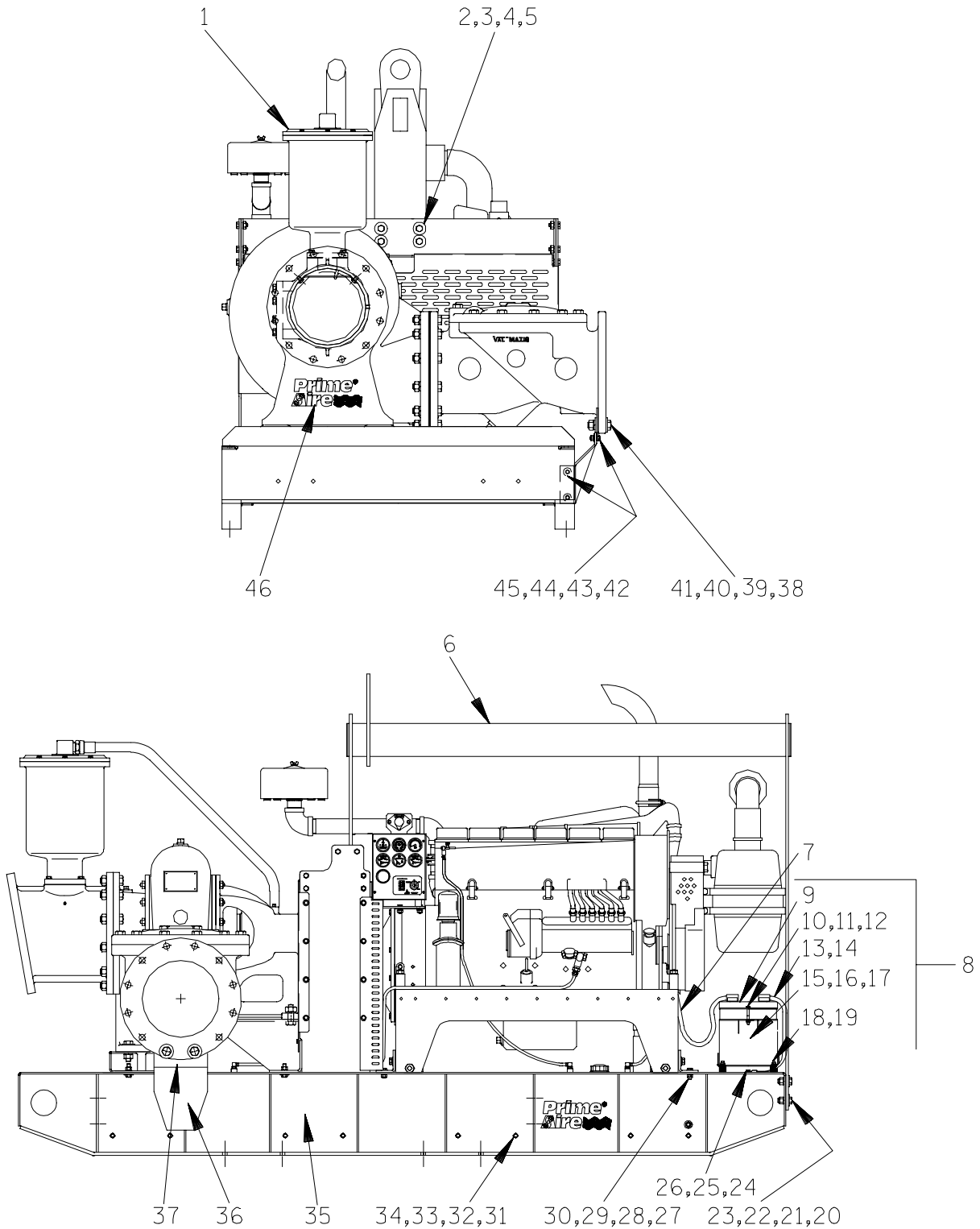


Pump speed and operating condition points must be within the continuous performance range shown on the curve.



Performance Curve – Model PA12A60–B–BF6L

**This Page Intentionally Blank**



**THE GORMAN-RUPP COMPANY • MANSFIELD, OHIO**

GORMAN-RUPP OF CANADA LIMITED • ST. THOMAS, ONTARIO, CANADA

Printed in U.S.A.

September 17, 2002

©Copyright by the Gorman-Rupp Company

1 of 18

Page 64.12 A2

S/N 1249443 Up  
PUMP ISSUE 3

**PARTS LIST**  
**Pump Model PA12A60-B-BF6L**

If your pump serial number is followed by an "N", your pump is **NOT** a standard production model. Contact the Gorman-Rupp Company to verify part numbers.

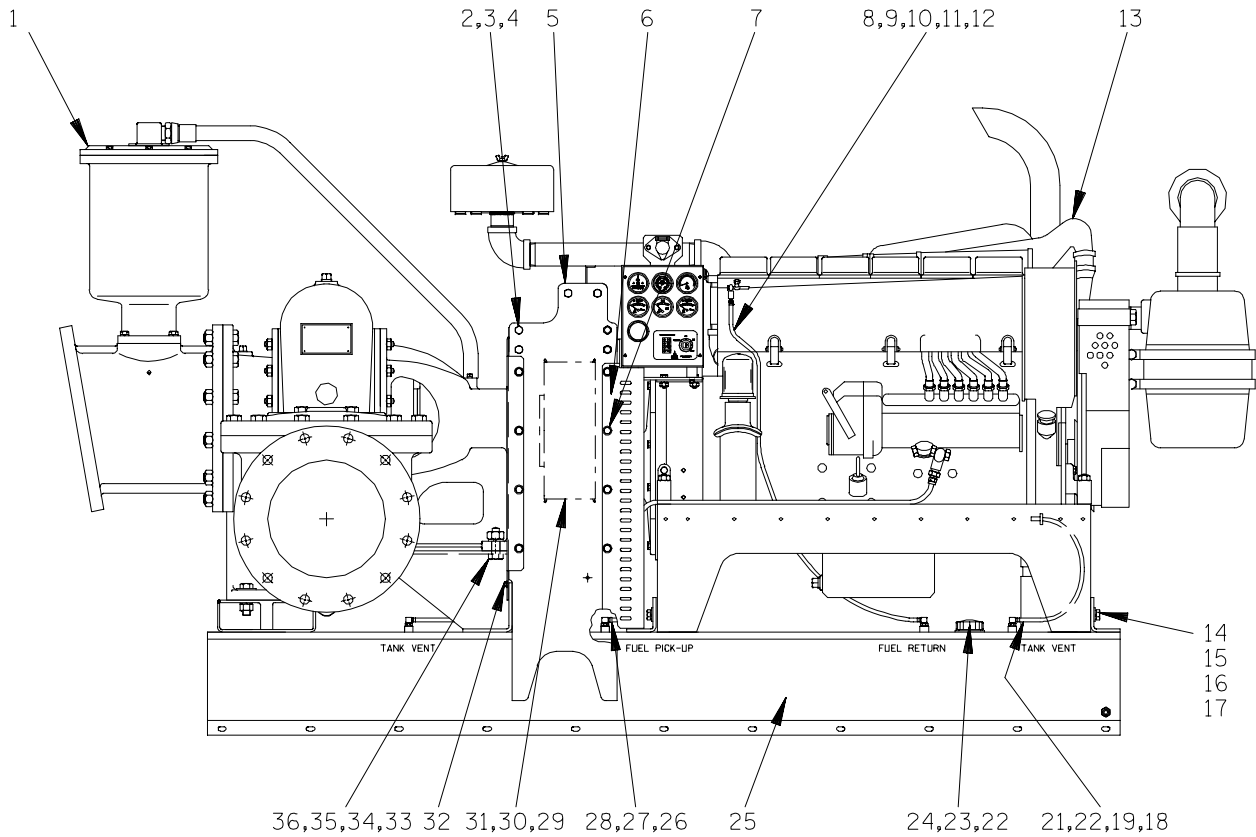
ITEM NO.	PART NAME	PART NUMBER	MAT'L CODE	QTY	ITEM NO.	PART NAME	PART NUMBER	MAT'L CODE	QTY
1	PUMP SUB-ASSEMBLY	46133-983	---	1	29	LOCK WASHER	J08	15991	12
2	HEX HD CAPSCREW	B1008	15991	4	30	HEX NUT	D08	15991	12
3	FLAT WASHER	K10	15991	4	31	HEX HD CAPSCREW	B0808	15991	16
4	LOCK WASHER	J10	15991	4	32	FLAT WASHER	21161-501	---	32
5	HEX NUT	D10	15991	4	33	LOCK WASHER	J08	15991	16
6	LIFT BAIL ASSY	44721-029	24150	1	34	HEX NUT	D08	15991	16
7	POS BATTERY CABLE	47311-118	---	1	35	COMBO BASE	41565-584	24150	1
8	BATTERY BOX ASSEMBLY	GRP40-08C	---	1	36	CV SUPPORT BRKT	41881-604	24150	1
9	-HEX HD CAPSCREW	B0607	15991	2	37	CHECK VALVE SUPPORT	33643-131	15080	1
10	-FLAT WASHER	K06	15991	2	38	HEX HD CAPSCREW	B1412	15991	2
11	-FLANGED HEX NUT	21765-314	---	2	39	FLAT WASHER	K14	15991	4
12	-GRD CABLE ASSEMBLY	47311-064	---	1	40	LOCK WASHER	J14	15991	2
13	-T-TYPE LOCKWASHER	BL06	15991	1	41	HEX NUT	D14	15991	2
14	-BATTERY BOX LID	42113-012	24150	1	42	HEX HD CAPSCREW	B0705	15991	4
15 *	-12V BATTERY	SEE OPTIONS		1	43	FLAT WASHER	K07	15991	6
16	-BATTERY TAG	38818-506	---	1	44	LOCK WASHER	J07	15991	4
17	-BATTERY BOX ASSY	42431-030	24150	1	45	HEX NUT	D07	15991	4
18	-STUD MOUNT	24631-006	---	4	46	DECAL (PRIME AIRE)	38812-078	---	3
19	-FLANGED HEX NUT	21765-314	---	10		NOT SHOWN:			
20	HEX HD CAPSCREW	B1007	15991	4		STRAINER	46641-012	24150	1
21	FLAT WASHER	K10	15991	4		CABLE TIE	27111-218	---	1
22	LOCKWASHER	J10	15991	4		FLOAT SWITCH KIT	48312-980	---	1
23	HEX NUT	D10	15991	4		OPTIONAL:			
24	HEX HD CAPSCREW	B0604	15991	1		* 12V BATTERY	29331-506	---	1
25	HEX NUT	D06	15991	1		WHEEL KIT	GRP30-254	---	1
26	LOCK WASHER	J06	15991	1					
27	HEX HD CAPSCREW	B0807	15991	12					
28	FLAT WASHER	21161-501	---	12					

\* INDICATES PARTS RECOMMENDED FOR STOCK

**THE GORMAN-RUPP COMPANY • MANSFIELD, OHIO**

GORMAN-RUPP OF CANADA LIMITED • ST. THOMAS, ONTARIO, CANADA

Printed in U.S.A.



**THE GORMAN-RUPP COMPANY • MANSFIELD, OHIO**

GORMAN-RUPP OF CANADA LIMITED • ST. THOMAS, ONTARIO, CANADA

Printed in U.S.A.

September 17, 2002

©Copyright by the Gorman-Rupp Company

3 of 18

Page 64.12 A2



S/N 1249443 Up  
PUMP ISSUE 3

**PARTS LIST**  
**Pump Sub-Assembly**

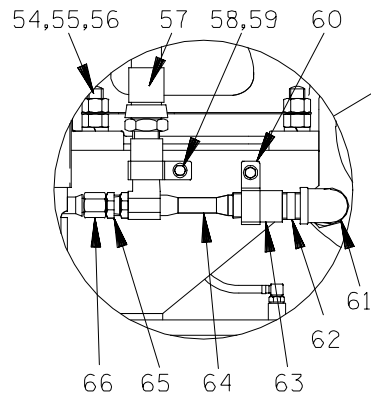
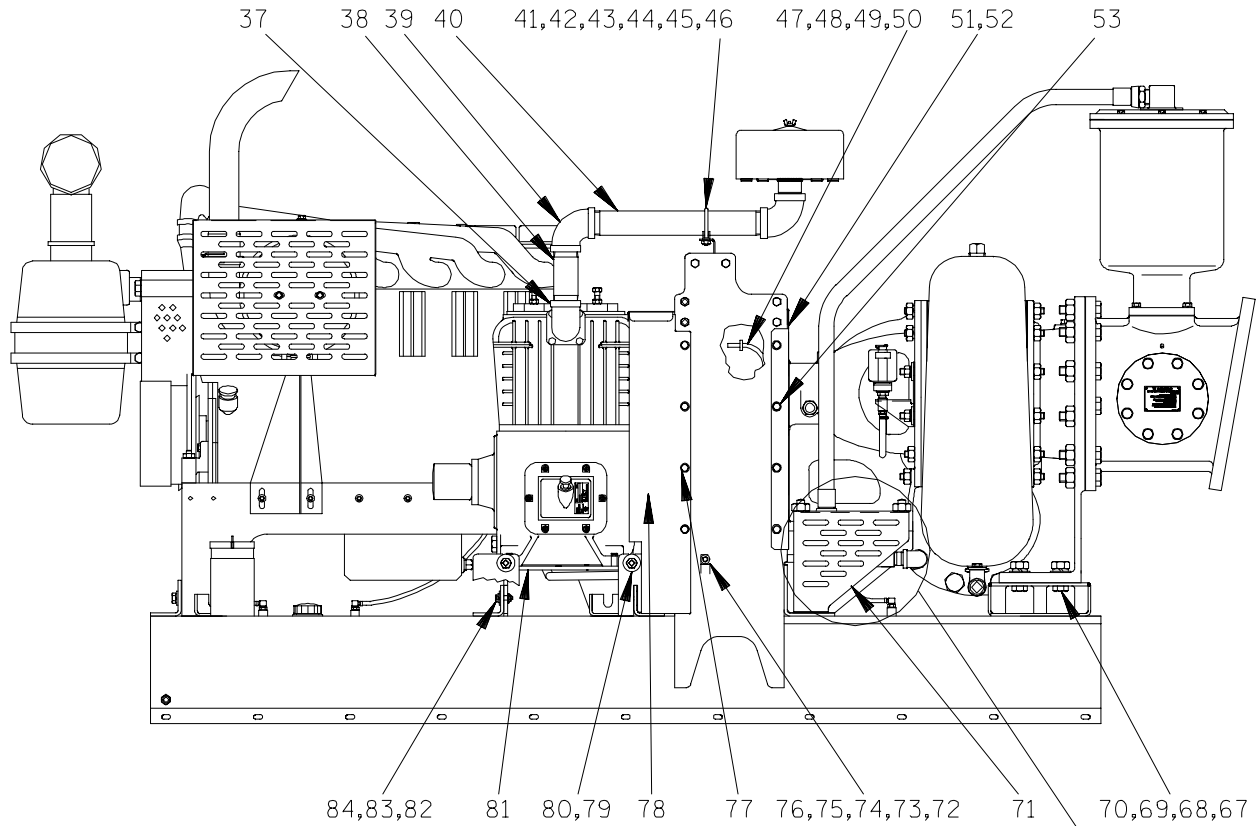
ITEM NO.	PART NAME	PART NUMBER	MAT'L CODE	QTY	ITEM NO.	PART NAME	PART NUMBER	MAT'L CODE	QTY
1	PUMP ASSEMBLY	PA12A60-B	---	1	20	MALE CONNECTOR	26523-463	---	1
2	HEX HD CAPSCREW	B0806	15991	12	21	REDUCER BUSHING	AP0604	15079	1
3	LOCKWASHER	J08	15991	12	22	FLANGE W/GSKT	29332-151	---	1
4	HEX NUT	D08	15991	12	23	FUEL GAUGE	29332-132	---	1
5	HOIST BAIL SUB ASSY	44718-032	24150	1	24	#10 TAPSCREW	21281-444	---	6
6	GUARD-ENGINE SIDE	34266-007	15120	1	25	FUEL TANK ASSY	46711-068	---	1
7	FLANGE HD CAPSCREW	21634-515	---	4		- FUEL CAP	29332-106	---	1
8	FUEL LINE	11308K	---	1	26	FUEL PICKUP	29332-142	---	1
9	HOSE CLAMP	26518-641	---	2	27	HOSE ASSY	46341-796	---	1
10	HOSE BARB FITTING	26523-443	---	1	28	MALE CONNECTOR	S1447	---	1
11	MALE CONNECTOR	26523-463	---	1	29 *	DRIVE BELT-PUMP	24154-001	---	1
12	REDUCER BUSHING	AP0604	15079	1	30	SPROCKET	24271-003	---	1
13	ENGINE MOD ASSY	44311-008	---	1	31	BUSHING	24131-535	---	1
14	HEX HD CAPSCREW	B0807	15991	6	32	FLANGE HD CAPSCREW	21634-505	---	5
15	LOCKWASHER	J08	15991	6	33	HEX HD CAPSCREW	B1211	15991	2
16	SQUARE WASHER	21168-025	---	6	34	HEX NUT	D12	15991	2
17	SHIM SET	48261-045	---	1	35	LOCKWASHER	J12	15991	2
18	FUEL LINE	11308F	---	1	36	FLAT WASHER	K12	15991	2
19	HOSE CLAMP	26518-641	---	1					

\* INDICATES PARTS RECOMMENDED FOR STOCK

**THE GORMAN-RUPP COMPANY • MANSFIELD, OHIO**

GORMAN-RUPP OF CANADA LIMITED • ST. THOMAS, ONTARIO, CANADA

Printed in U.S.A.

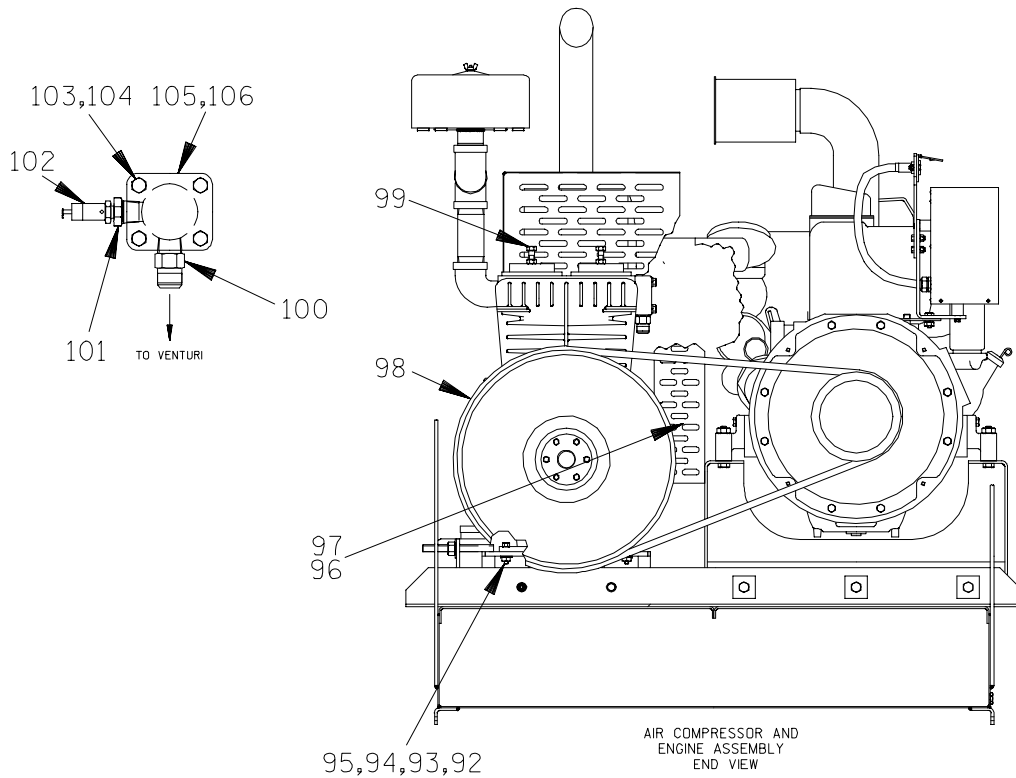
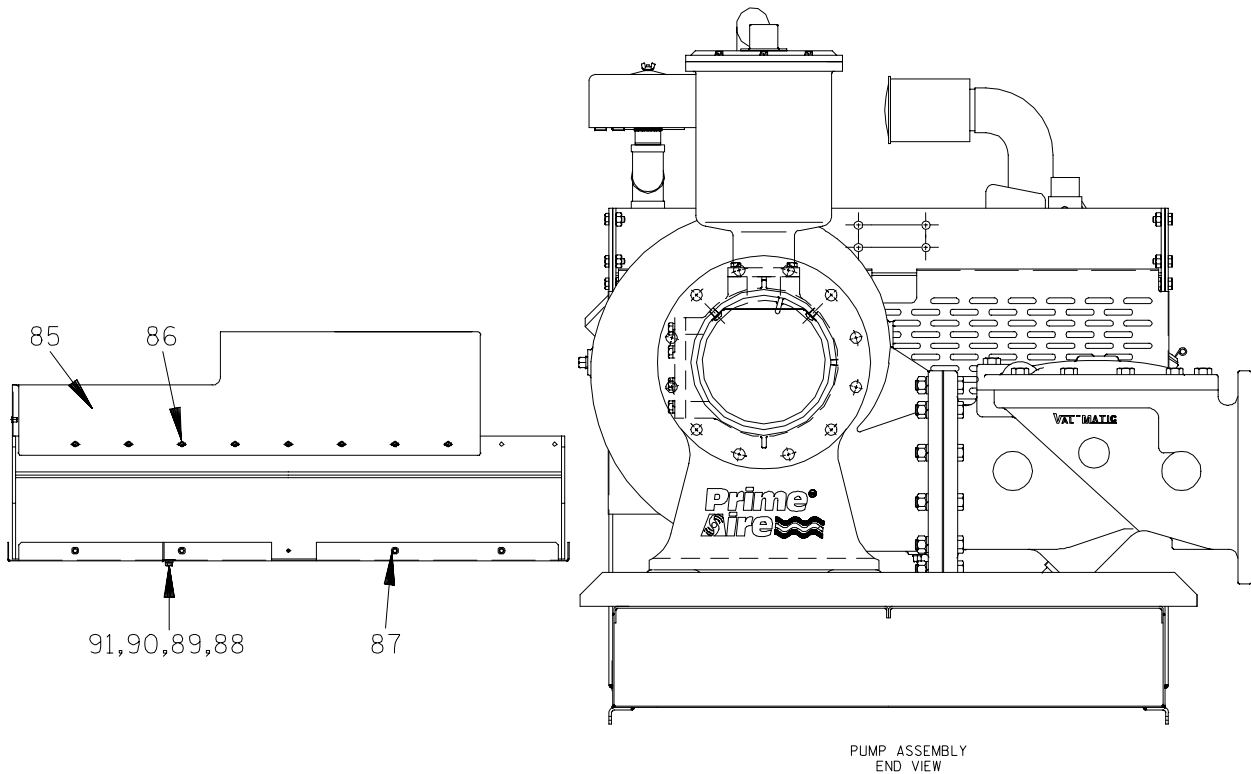


S/N 1249443 Up  
PUMP ISSUE 3

**PARTS LIST**  
**Pump Sub-Assembly**

ITEM NO.	PART NAME	PART NUMBER	MAT'L CODE	QTY	ITEM NO.	PART NAME	PART NUMBER	MAT'L CODE	QTY
37	STREET ELBOW	RS32	11999	1	61	PIPE ELBOW	R16	15079	1
38	PIPE NIPPLE	T3224	15079	1	62	NIPPLE	T1608	15079	1
39	PIPE ELBOW	R32	11999	2	63	PIPE COUPLING	AE16	15079	2
40	PIPE NIPPLE	T3272	15079	1	64	VENTURI	26817-001	---	1
41	PIPE SUPPORT BRKT	34265-032	15120	1	65	HOSE FITTING	26341-128	---	1
42	MUFFLER CLAMP	29334-261	---	1	66	A/C HOSE ASSEMBLY	46341-022	---	1
43	HEX HD CAPSCREW	B0805	15991	1	67	HEX HD CAPSCREW	B1211	15991	4
44	HEX NUT	D08	15991	1	68	HEX NUT	D12	15991	4
45	LOCKWASHER	J08	15991	1	69	LOCK WASHER	J12	15991	4
46	FLAT WASHER	K08	15991	1	70	FLAT WASHER	K12	15991	4
47	FUEL LINE	11308F	---	1	71	VENTURI GUARD	34518-020	15120	1
48	HOSE CLAMP	26518-641	---	1	72	CLAMP	22811-422	---	1
49	MALE CONNECTOR	26523-463	---	1	73	HEX HD CAPSCREW	B0503-1/2	15991	1
50	REDUCER BUSHING	AP0604	15079	1	74	FLAT WASHER	K05	15991	1
51	GUARD PUMP-END ASSY	42381-077	---	1	75	LOCK WASHER	J05	15991	1
52	GUARD PUMP-END	34266-022	15120	1	76	HEX NUT	D05	15991	1
53	FLANGE HD CAPSCREW	21634-515	---	4	77	FLANGED CAPSCREW	21634-515	---	8
54	HEX HD CAPSCREW	B1214	15991	2	78	FLYWHEEL GUARD	34518-016	15120	1
55	HEX NUT	D12	15991	4	79	HEX NUT	D10	15991	4
56	LOCK WASHER	J12	15991	2	80	FLAT WASHER	K10	15991	4
57	VACUUM HOSE ASSY	46341-021	---	1	81	A/C MTG BRACKET	41881-529	24150	1
58	HEX HD CAPSCREW	B0504	15991	2	82	HEX HD CAPSCREW	B0606	15991	4
59	LOCK WASHER	J05	15991	2	83	LOCK WASHER	J06	15991	4
60	STRAP	22811-259	---	2	84	SQUARE WASHER	21168-023	---	4

\* INDICATES PARTS RECOMMENDED FOR STOCK



**THE GORMAN-RUPP COMPANY • MANSFIELD, OHIO**

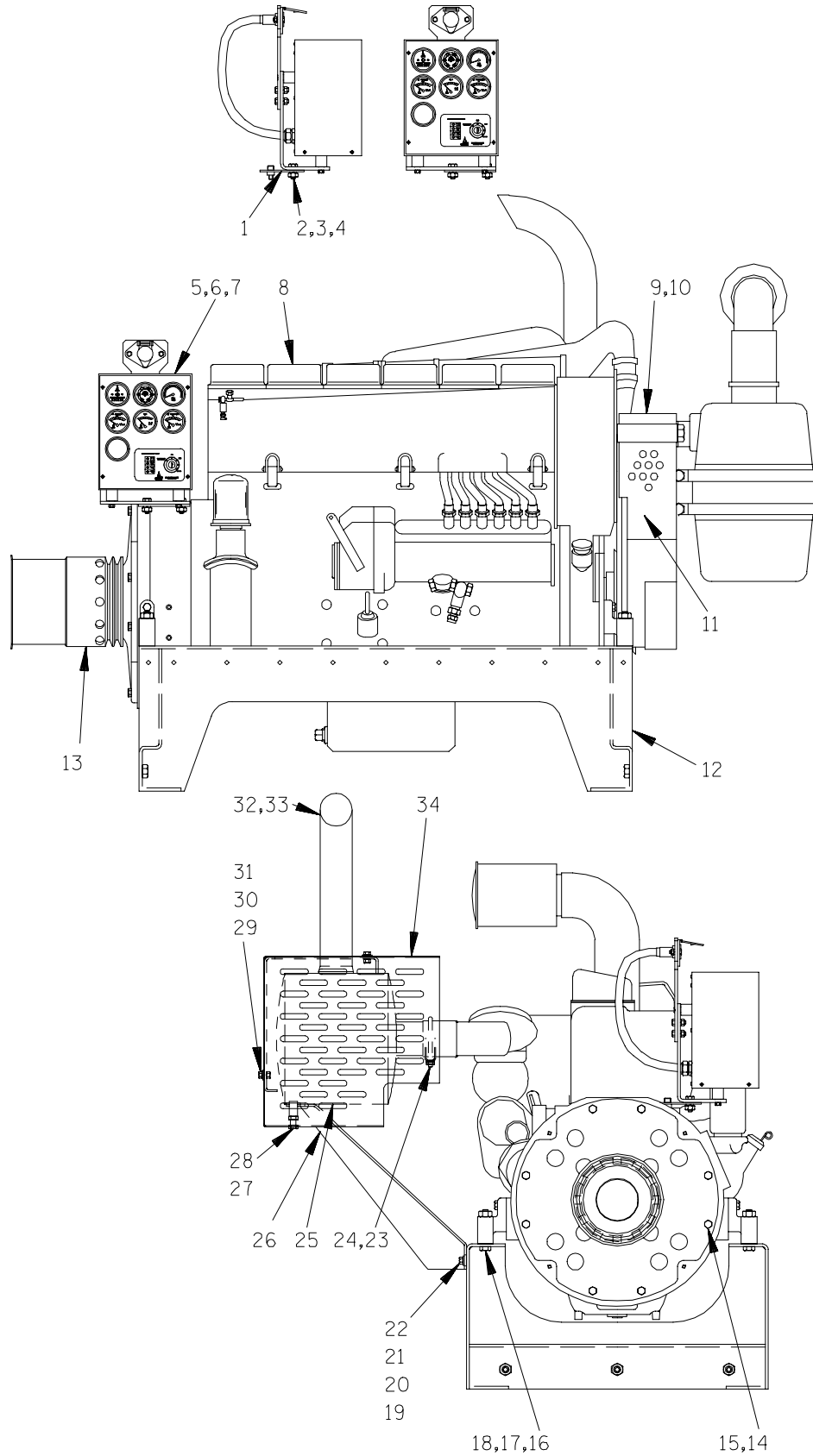
GORMAN-RUPP OF CANADA LIMITED • ST. THOMAS, ONTARIO, CANADA

Printed in U.S.A.

September 17, 2002

©Copyright by the Gorman-Rupp Company





**THE GORMAN-RUPP COMPANY • MANSFIELD, OHIO**

GORMAN-RUPP OF CANADA LIMITED • ST. THOMAS, ONTARIO, CANADA

Printed in U.S.A.

September 17, 2002

©Copyright by the Gorman-Rupp Company

9 of 18

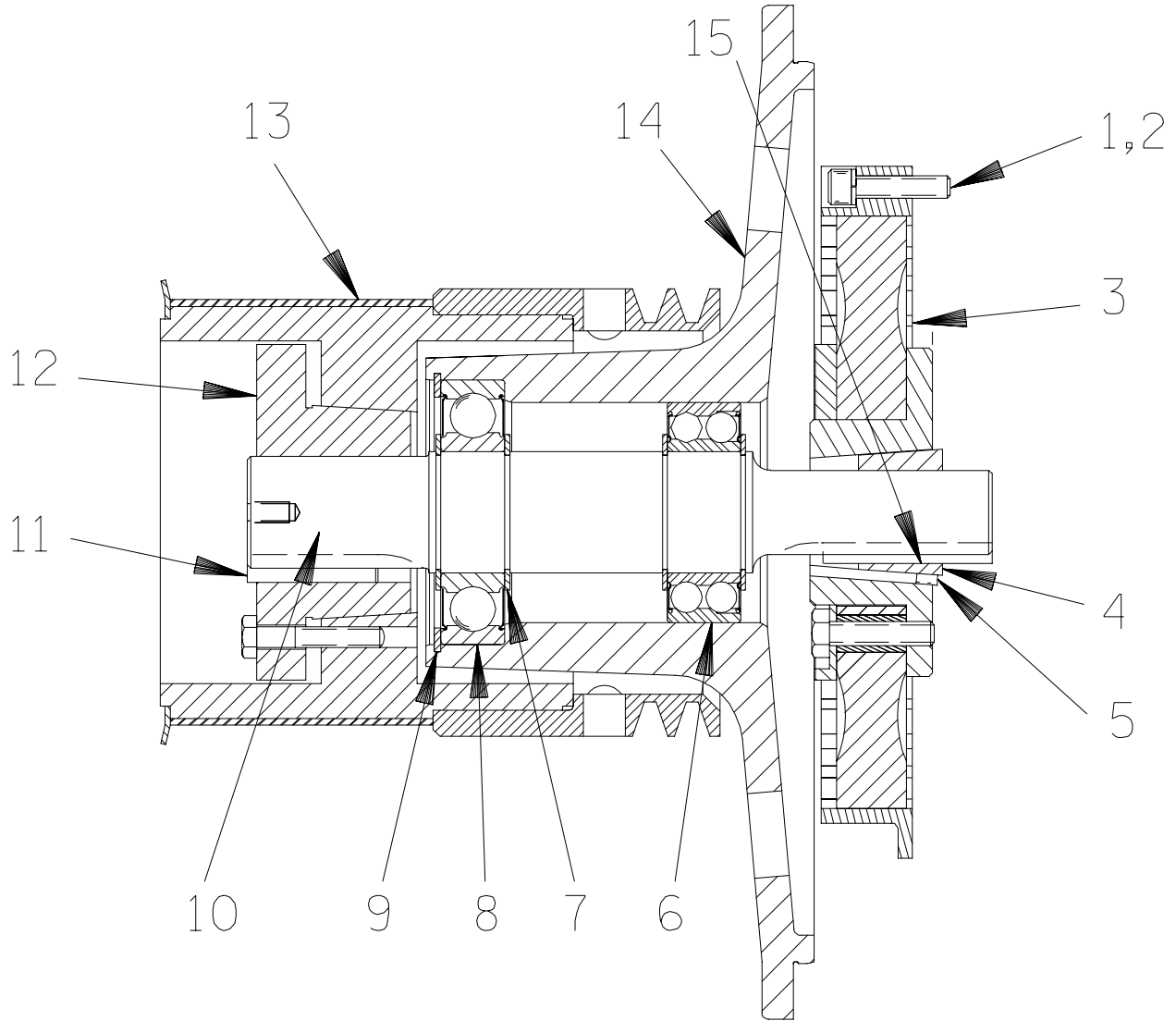
Page 64.12 A2

S/N 1249443 Up  
PUMP ISSUE 3

**PARTS LIST**  
**Engine Modification Assembly**

ITEM NO.	PART NAME	PART NUMBER	MAT'L CODE	QTY	ITEM NO.	PART NAME	PART NUMBER	MAT'L CODE	QTY
1	CTRL PANEL MTG PLT	33273-158	15120	1	18	HEX NUT	D08	15991	4
2	HEX HD CAPSCREW	B0604	15991	2	19	HEX HD CAPSCREW	B0604 1/2	15991	2
3	LOCK WASHER	J06	15991	2	20	LOCKWASHER	J06	15991	2
4	HEX NUT	D06	15991	2	21	FLAT WASHER	K06	15991	2
5	CAUTION DECAL	2613FJ	---	1	22	HEX NUT	D06	15991	2
6	WARNING DECAL	2613FE	---	1	23	MUFFLER CLAMP	29334-264	---	1
7	CONTROL PANEL KIT	48122-513	---	1	24	MANIFOLD PIPE ASSY	46281-005	24150	1
8	DEUTZ BF6L ENGINE	29217-101	---	1	25	MUFFLER ASSY	46211-027	24150	1
9	ALT FAN GUARD CAP	42353-952	24150	1	26	SUPPORT BRKT ASSY	41824-009	24150	1
10	POP RIVET	21122-153	---	2	27	HEX HD CAPSCREW	B0807	15991	3
11	V-BELT GUARD ASSY	29277-141	---	1	28	HEX JAM NUT	AT08	15991	3
12	PEDESTAL MTG BRKT	41414-012	---	1	29	HEX HD CAPSCREW	B0603	15991	3
13	ENGINE DRIVE ASSY	44162-152	---	1	30	LOCKWASHER	J06	15991	1
14	HEX HD CAPSCREW	22645-164	---	8	31	FLAT WASHER	K06	15991	1
15	LOCKWASHER	21171-511	---	8	32	MUFFLER CLAMP	29334-264	---	1
16	HEX HD CAPSCREW	B0814	15991	4	33	EXHAUST PIPE	31911-004	15000	1
17	LOCKWASHER	J08	15991	4	34	MUFFLER GRD ASSY	42331-045	24150	1

\* INDICATES PARTS RECOMMENDED FOR STOCK



**THE GORMAN-RUPP COMPANY • MANSFIELD, OHIO**

GORMAN-RUPP OF CANADA LIMITED • ST. THOMAS, ONTARIO, CANADA

Printed in U.S.A.

September 17, 2002

©Copyright by the Gorman-Rupp Company

11 of 18

Page 64.12 A2



S/N 1249443 Up  
PUMP ISSUE 3

**PARTS LIST**  
**Engine Drive Assembly**

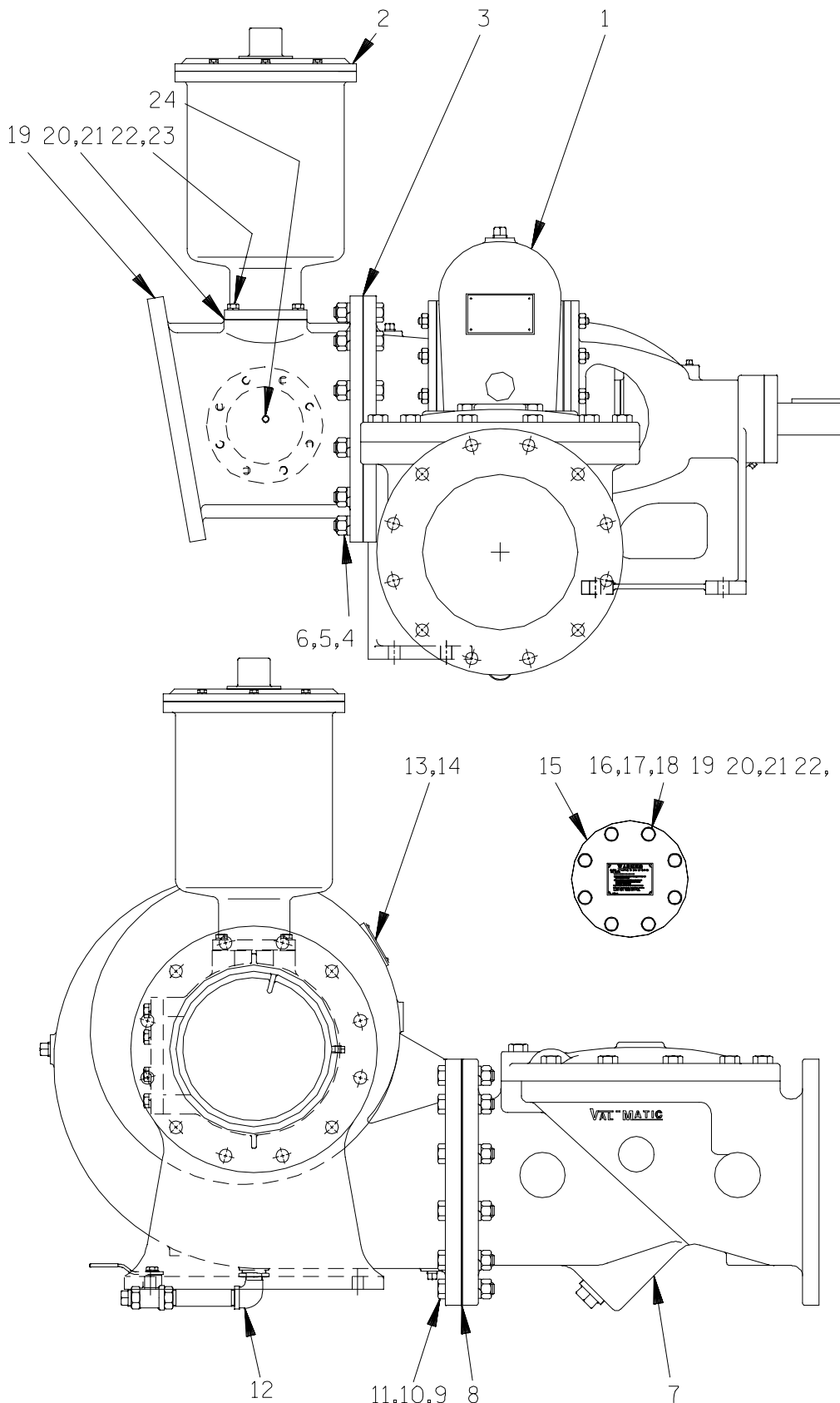
ITEM NO.	PART NAME	PART NUMBER	MAT'L CODE	QTY
1	SOCKET HEAD CAPSCREW	22644-220	---	8
2	LOCKWASHER	21171-536	---	8
3	COUPLING W/O BUSHING	24391-103	---	1
4	BUSHING	24131-496	---	1
5	-ALLEN HD SETSCREW	GA0703 1/2	15990	2
6	* BALL BEARING	23431-012	---	1
7	RETAINING RING	S215	---	4
8	* BALL BEARING	23282-012	---	1
9	RETAINING RING	24121-075	---	1
10	OUTPUT SHAFT	38512-051	1706H	1
11	* OUTPUT SHAFT KEY (DRIVE END)	N0807	15990	1
12	TAPERLOCK BUSHING	24131-526	---	1
13	DRIVE SPROCKET	44162-901	---	1
14	BEARING HOUSING	38251-001	11010	1
15	* OUTPUT SHAFT KEY (DRIVEN END)	N0612	15990	1

\* INDICATES PARTS RECOMMENDED FOR STOCK

**THE GORMAN-RUPP COMPANY • MANSFIELD, OHIO**

GORMAN-RUPP OF CANADA LIMITED • ST. THOMAS, ONTARIO, CANADA

Printed in U.S.A.



**THE GORMAN-RUPP COMPANY • MANSFIELD, OHIO**

GORMAN-RUPP OF CANADA LIMITED • ST. THOMAS, ONTARIO, CANADA

Printed in U.S.A.

September 17, 2002

©Copyright by the Gorman-Rupp Company

13 of 18

Page 64.12 A2

S/N 1249443 Up  
PUMP ISSUE 3

**PARTS LIST**  
**PA12A60-B Pump Model Assembly**

ITEM NO.	PART NAME	PART NUMBER	MAT'L CODE	QTY
1	PUMP SUB-ASSEMBLY	612M60-B	---	1
2	PRIMING CHAMBER ASSY	46112-704	---	1
3	FLANGE GASKET	4991G	18000	1
4	HEX HD CAPSCREW	B1413	15991	12
5	LOCK WASHER	J14	15991	12
6	HEX NUT	D14	15991	12
7	CHECK VALVE ASSY	26642-128	---	1
	-FLAPPER	26688-003	---	1
	-COVER GASKET	26688-004	---	1
8	FLANGE GASKET	4991G	18000	1
9	HEX HD CAPSCREW	B1415	15991	12
10	LOCKWASHER	J14	15991	12
11	HEX NUT	D14	15991	12
12	DRAIN VALVE ASSY	46346-262	---	1
13	NAME PLATE	38818-127	13000	1
14	DRIVE SCREW	BM#04-03	17000	4
15	BLIND FLANGE ASSY	42111-358	---	1
16	HEX HD CAPSCREW	B1006 1/2	15991	8
17	LOCK WASHER	J10	15991	8
18	FLANGE GASKET	25113-034	---	1
19	12" SPOOL	38642-617	10000	1
20	BAFFLE GASKET	38687-053	19060	1
21	BAFFLE	31113-011	17000	1
22	HEX HD CAPSCREW	B0807	15991	4
23	LOCK WASHER	J08	15991	4
24	PIPE PLUG	P04	15079	1

NOT SHOWN:

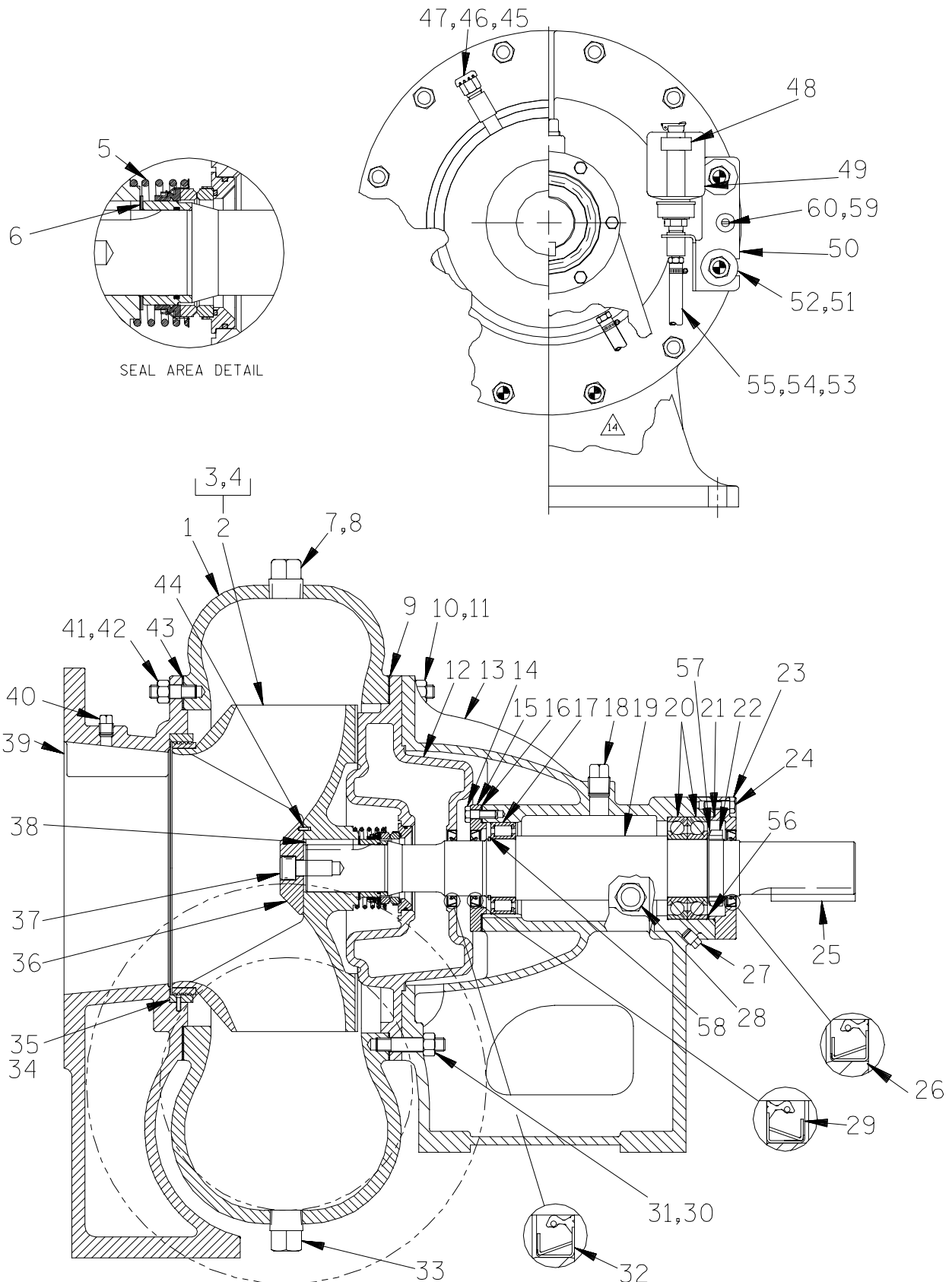
STRAINER	46641-012	24150	1
----------	-----------	-------	---

\* INDICATES PARTS RECOMMENDED FOR STOCK

**THE GORMAN-RUPP COMPANY • MANSFIELD, OHIO**

GORMAN-RUPP OF CANADA LIMITED • ST. THOMAS, ONTARIO, CANADA

Printed in U.S.A.



**THE GORMAN-RUPP COMPANY • MANSFIELD, OHIO**

GORMAN-RUPP OF CANADA LIMITED • ST. THOMAS, ONTARIO, CANADA

Printed in U.S.A.

September 17, 2002

©Copyright by the Gorman-Rupp Company

15 of 18

Page 64.12 A2

S/N 1249443 Up  
PUMP ISSUE 3

**PARTS LIST**  
**612M60-B Pump Model Assembly**

ITEM NO.	PART NAME	PART NUMBER	MAT'L CODE	QTY	ITEM NO.	PART NAME	PART NUMBER	MAT'L CODE	QTY
1	VOLUTE CASING	38219-305	10010	1	36 *	IMP WASHER	31167-022	15030	1
2 *	IMP & WEAR RING ASSY	46151-022	24110	1	37	SOC HD CAPSCREW	BD1206	15990	1
3	-IMPELLER	38621-729	11010	1	38 *	IMPELLER KEY	N0809	15990	1
4	-WEAR RING	4182A	11030	1	39	SUCTION HEAD	4180	10010	1
5 *	MECHANICAL SEAL	46512-109	---	1	40	PIPE PLUG	P06	15079	1
6 *	SHIM SET	48261-033	---	REF	41	STUD	C1009	15991	12
7	PIPE PLUG	P12	15079	2	42	HEX NUT	D10	15991	12
8	PIPE PLUG	P06	15079	1	43 *	SUCTION HEAD GASKET	4180G	18000	1
9 *	VOLUTE CASING GSKT	38674-434	18000	1	44	ROLL PIN	S2197	---	1
10	STUD	C1011	15991	8	45	AIR VENT	S1703	---	1
11	HEX NUT	D10	15991	8	46	PIPE NIPPLE	T0608	15079	1
12	SEAL PLATE	38272-713	10010	1	47	PIPE COUPLING	AE06	15079	1
13	PEDESTAL	38257-520	10000	1	48	OIL LEVEL DECAL	38816-123	---	1
14	HEX HD CAPSCREW	B0605	15991	6	49	BOTTLE OILER	26713-004	---	1
15	INBOARD BEARING CAP	38322-425	10010	1	50	OILER BRACKET ASSY	41881-720	24150	1
16 *	BEARING CAP GASKET	4184G	18000	1	51	FLAT WASHER	K10	15991	2
17 *	ROLLER BEARING	23528-005	---	1	52	LOCK WASHER	J10	15991	2
18	VENTED PIPE PLUG	38649-009	15079	1	53	MALE CONNECTOR	26523-409	---	2
19 *	IMPELLER SHAFT	38512-522	17040	1	54	HOSE 3/8 X 11' LG	18513-054	---	.9'
20 *	OUTBRD BALL BEARING	23413-015	---	2	55	HOSE CLAMP	26518-642	---	2
21 *	BRG CAP O-RING	25152-249	---	1	56	BRG ADJ SHIM SET	48261-055	---	1
22	BEARING LOCKNUT	23962-015	---	1	57	LOCKING TAB WASHER	23962-515	---	1
23	BEARING CAP	38322-429	10000	1	58	RETAINING RING	24124-057	---	1
24	HEX HD CAPSCREW	B0605	15991	6	59	RD HD MACH SCREW	X0405	15991	2
25 *	SHAFT KEY	N1016	15990	1	60	LOCKWASHER	J04	15991	2
26 *	BRG CAP OIL SEAL	25258-845	---	1	NOT SHOWN:				
27	PEDESTAL DRAIN PLUG	P04	15079	1		G-R DECAL	GR-03	---	1
28	SIGHT GAUGE	S1471	---	2		STRAINER	46641-012	24150	1
29 *	BRG CAP OIL SEAL	25258-845	---	1		INSTRUC PAPER TAG	38817-024	---	1
30	STUD	C1013	15991	4		SUCTION DECAL	6588AG	---	1
31	HEX NUT	D10	15991	4		DISCHARGE DECAL	6588BJ	---	1
32 *	SEAL PLATE OIL SEAL	25258-845	---	1		LUBRICATION DECAL	38816-079	---	2
33	PIPE PLUG	P24	10009	1		ROTATION DECAL	2613M	---	1
34 *	SUCT HEAD WEAR RING	4181A	14000	1		INSTRUC PAPER TAG	38817-011	---	1
35	SPIRAL PIN	21137-123	---	3		NAME PLATE	38818-127	13000	1
						DRIVE SCREW	BM#04-03	17000	4

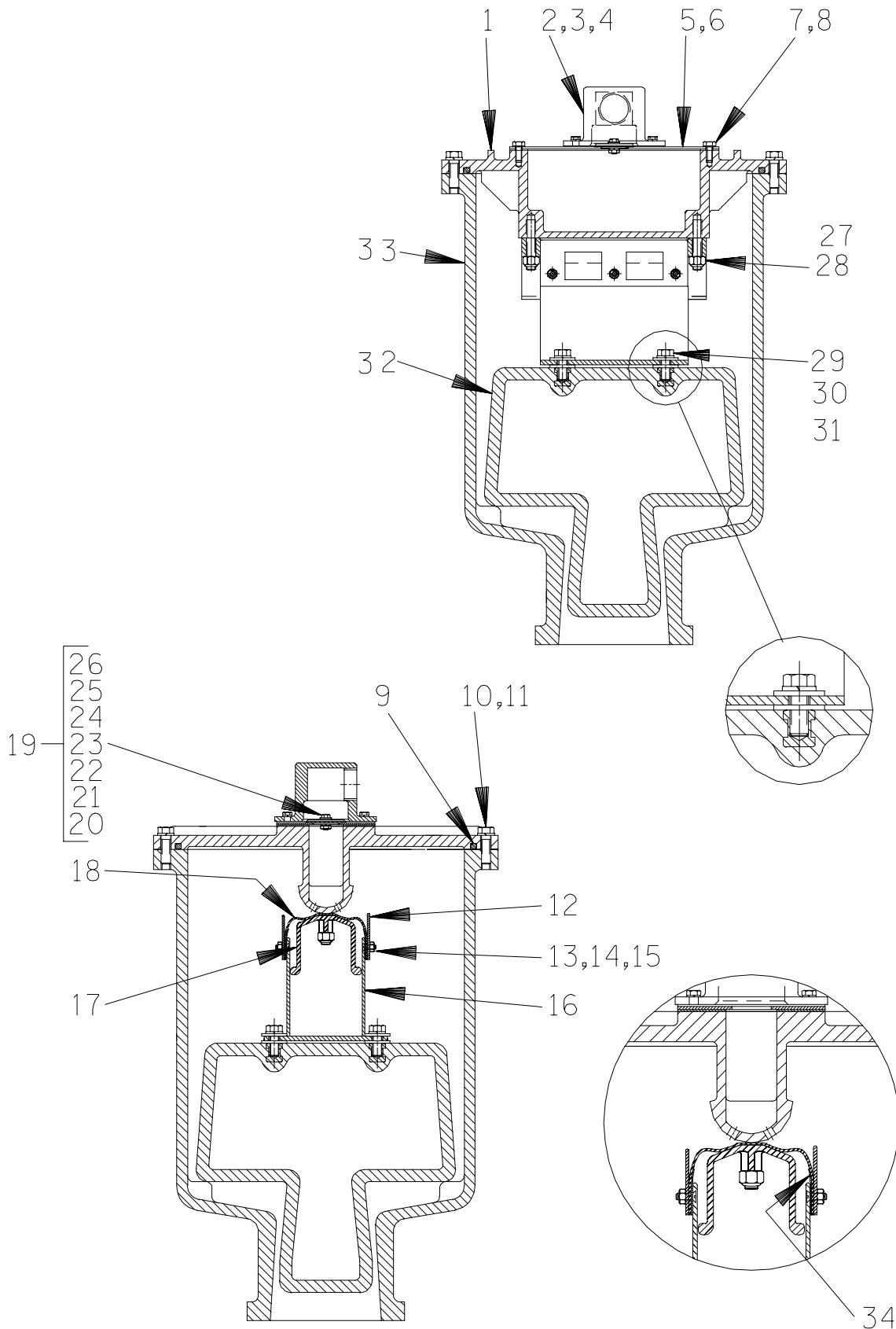
\* INDICATES PARTS RECOMMENDED FOR STOCK

**THE GORMAN-RUPP COMPANY • MANSFIELD, OHIO**

GORMAN-RUPP OF CANADA LIMITED • ST. THOMAS, ONTARIO, CANADA

Printed in U.S.A.

S/N 1249443 Up  
PUMP ISSUE 3



**THE GORMAN-RUPP COMPANY • MANSFIELD, OHIO**

GORMAN-RUPP OF CANADA LIMITED • ST. THOMAS, ONTARIO, CANADA

Printed in U.S.A.

September 17, 2002

©Copyright by the Gorman-Rupp Company

17 of 18

Page 64.12 A2

S/N 1249443 Up  
PUMP ISSUE 3

**PARTS LIST**  
**46112-702 Peeler Type Priming Valve**

ITEM NO.	PART NAME	PART NUMBER	MAT'L CODE	QTY	ITEM NO.	PART NAME	PART NUMBER	MAT'L CODE	QTY
1	PRIMING CHAMBER LID	38346-615	1300U	1	18	VALVE STRAP	33276-041	19410	1
2	PEELER VALVE NECK	38349-413	10000	1	19	CHECK VALVE ASSY	46411-112	---	1
3	HEX HD CAPSCREW	B0403-1/2	15991	4	20 *	-CHECK VALVE	38671-413	19020	1
4	LOCKWASHER	J04	15991	4	21	-LOCKWASHER	J#10	17000	1
5 *	VALVE PLATE GSKT	38687-555	19060	1	22	-HEX NUT	D#10	17000	1
6	VALVE PLATE	33541-040	17000	1	23	-FLAT WASHER	21161-810	---	1
7	HEX HD CAPSCREW	B0402-1/2	15991	4	24	-HEX HD CAPSCREW	B#10-02	17000	1
8	LOCKWASHER	J04	15991	4	25	-FLAT WASHER	21161-811	---	1
9 *	LINEAR O-RING	18512-056	---	3.9'	26	-SEALING WASHER	25123-056	---	1
10	HEX HD CAPSCREW	B0605	15991	12	27	STUD	C0607	17000	2
11	LOCKWASHER	J06	15991	12	28	HEX LOCKNUT	DD06	17000	2
12	GUIDE PLATE	33522-009	17000	2	29	HEX HD CAPSCREW	B0604	17000	4
13	FLAT HD CAPSCREW	F#10-03	17000	6	30	LOCKWASHER	J06	17000	4
14	LOCKWASHER	J#10	17000	6	31	FLAT WASHER	KB06	17000	8
15	HEX NUT	D#10	17000	6	32	PRIM VALVE FLOAT	38349-412	19220	1
16	VLV STRAP BRKT ASSY	41881-597	2415X	1	33	PRIMING CHAMBER	38343-018	10000	1
17	CLAMP PLATE	38349-411	14000	1	34	VLV STRAP PROTECTOR	33271-019	19000	2

\* INDICATES PARTS RECOMMENDED FOR STOCK

**THE GORMAN-RUPP COMPANY • MANSFIELD, OHIO**

GORMAN-RUPP OF CANADA LIMITED • ST. THOMAS, ONTARIO, CANADA

Printed in U.S.A.

**For U.S. and International Warranty Information,  
Please Visit [www.grpumps.com/warranty](http://www.grpumps.com/warranty)  
or call:  
U.S.: 419-755-1280  
International: +1-419-755-1352**

**For Canadian Warranty Information,  
Please Visit [www.grcanada.com/warranty](http://www.grcanada.com/warranty)  
or call:  
519-631-2870**