



***PRIME-AIRE*TM SERIES**
PUMP MODEL
PA12A60-B-BF6L

**MANUAL
PART 2 of 3**

**PARTS
LIST**
**WITH
PERFORMANCE CURVE**

THE GORMAN-RUPP COMPANY • MANSFIELD, OHIO

GORMAN-RUPP OF CANADA LIMITED • ST. THOMAS, ONTARIO, CANADA Printed in U.S.A.



The engine exhaust from this product contains chemicals known to the State of California to cause cancer, birth defects or other reproductive harm.

PERFORMANCE CURVE – SECTION A

RECORDING MODEL AND SERIAL NUMBERS

Please record the pump model and serial number in the spaces provided below and in the separate Installation/Operation Manual accompanying your pump. Your Gorman-Rupp distributor needs this information when you require parts or service.

Pump Model: _____

Serial Number: _____

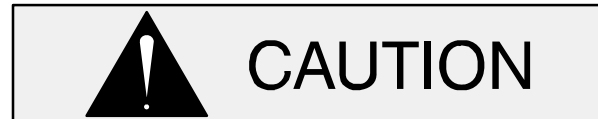
WARRANTY INFORMATION

The pump warranty is provided as part of Gorman-Rupp's support program for customers who operate and maintain their equipment as described in this manual and other accompanying literature. Please note that should the equipment be abused or modified to change its performance beyond the original factory specifications, the warranty will become void and any claim will be denied.

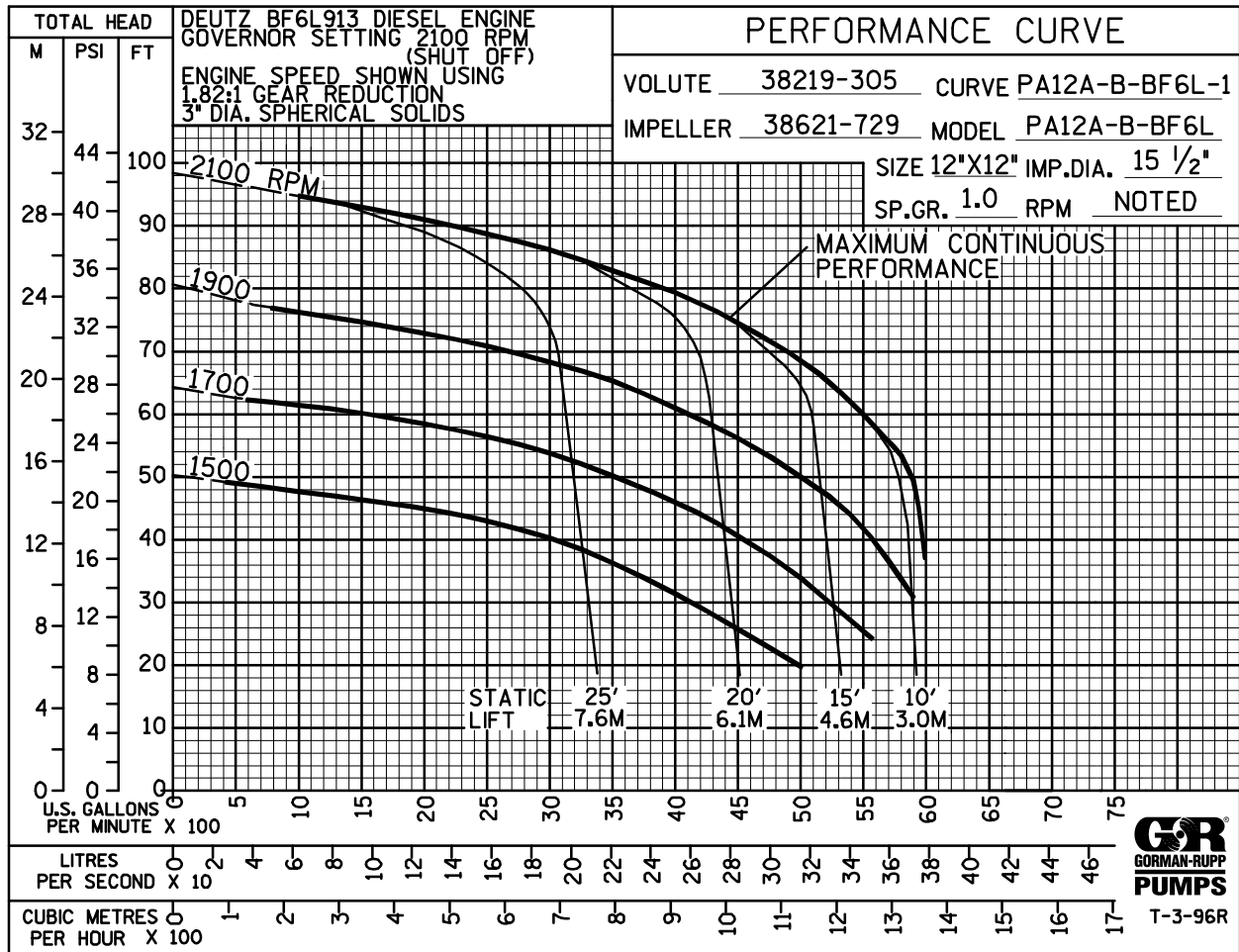
PERFORMANCE CURVE

The performance curve on the following page is based on 70° F (21° C) clear water at sea level with minimum suction lift. Since pump installations are seldom identical, your performance may be different due to such factors as viscosity, specific gravity, elevation, temperature, and impeller trim.

If your pump serial number is followed by an "N", your pump is **NOT** a standard production model. Contact the Gorman-Rupp Company to verify performance or part numbers.

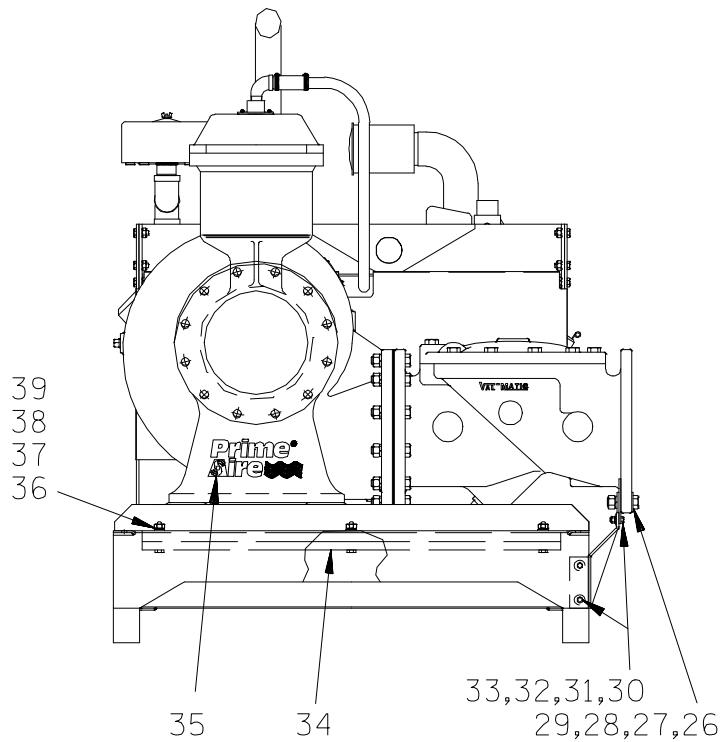
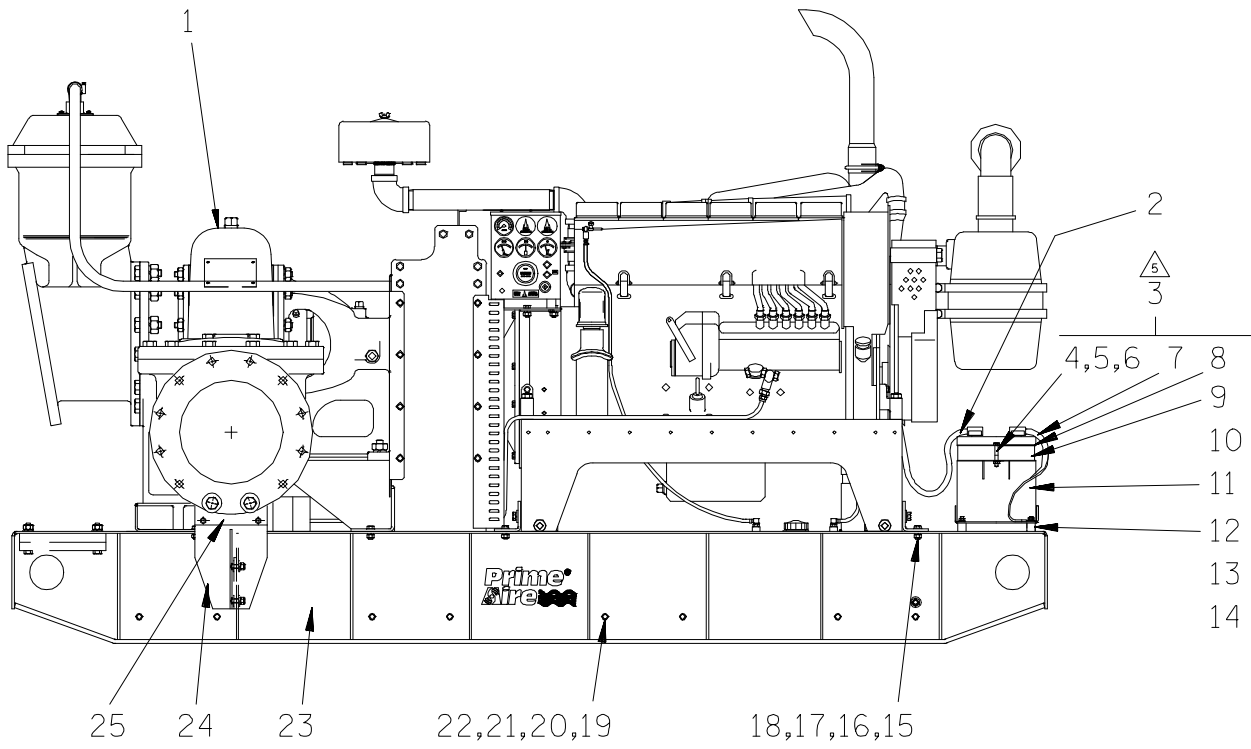


Pump speed and operating condition points must be within the continuous performance range shown on the curve.



Performance Curve – Model PA12A60-B-BF6L

This Page Intentionally Blank



THE GORMAN-RUPP COMPANY • MANSFIELD, OHIO

GORMAN-RUPP OF CANADA LIMITED • ST. THOMAS, ONTARIO, CANADA

Printed in U.S.A.

August 20, 1997

© Copyright by the Gorman-Rupp Company

1 of 20

Rev. D 07/17/01

Page 64.12 A2

S/N 1124179 Up
PUMP ISSUE 2

PARTS LIST
Pump Model PA12A60—B—BF6L

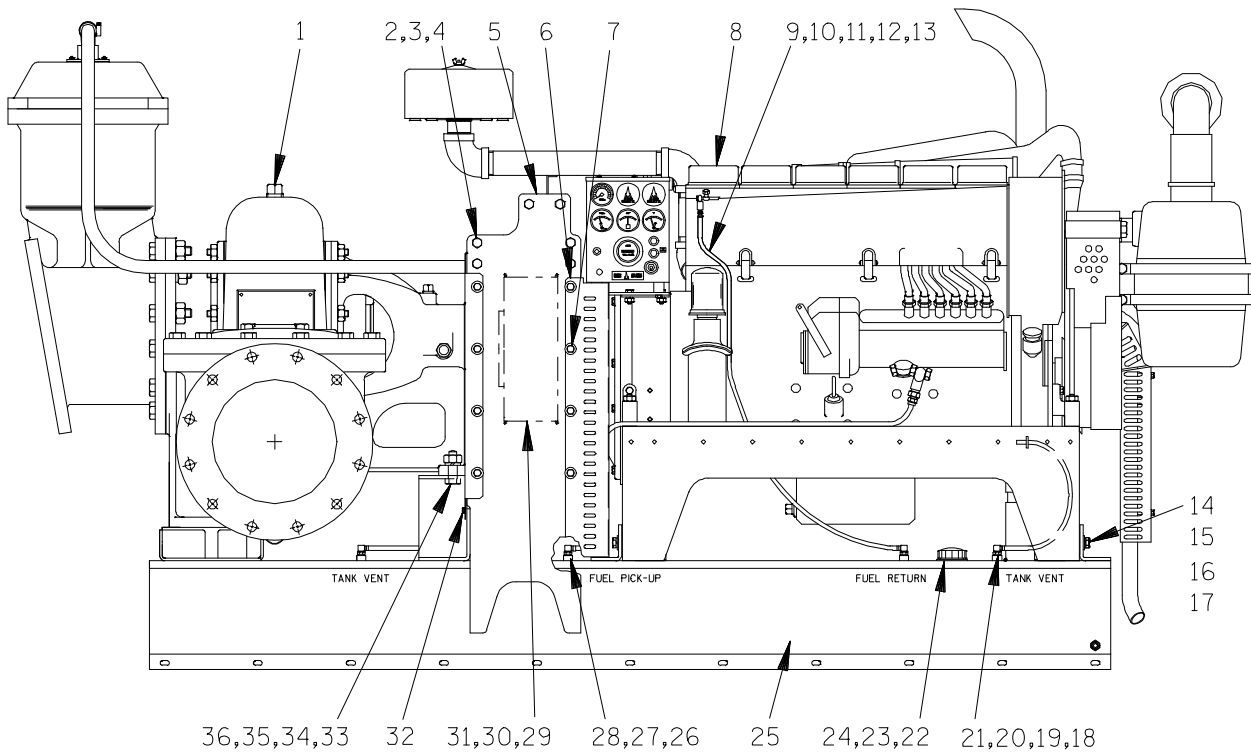
If your pump serial number is followed by an "N", your pump is **NOT** a standard production model. Contact the Gorman-Rupp Company to verify part numbers.

ITEM NO.	PART NAME	PART NUMBER	MAT'L CODE	QTY
1	PUMP SUB-ASSEMBLY	46133-903	---	1
2	POS BATTERY CABLE	47311-118	---	1
3	BATTERY BOX ASSEMBLY	GRP40-08C	---	1
4	-HEX HD CAPSCREW	B0607	15991	2
5	-FLAT WASHER	K06	15991	2
6	-FLANGED HEX NUT	21765-314	---	2
7	-GROUND CABLE ASSEMBLY	47311-064	---	1
8	-BATTERY BOX LID	42113-012	24150	1
9	* -12V BATTERY	29331-506	---	REF
10	-BATTERY TAG	38818-506	---	1
11	-BATTERY BOX ASSEMBLY	42431-030	24150	1
12	-STUD MOUNT	24631-006	---	4
13	-FLANGED HEX NUT	21765-314	---	8
14	-T-TYPE LOCKWASHER	BL06	15991	1
15	HEX HD CAPSCREW	B0806	15991	11
16	FLAT WASHER	21161-501	15991	11
17	LOCKWASHER	J08	15991	11
18	HEX NUT	D08	15991	11
19	HEX HD CAPSCREW	B0808	15991	16
20	FLAT WASHER	21161-501	---	32
21	LOCKWASHER	J08	15991	16
22	HEX NUT	D08	15991	16
23	SKID ASSEMBLY	41565-569	24150	1
24	CHECK VALVE SUPPORT BRACKET	41881-604	24150	1
25	CHECK VALVE SUPPORT	33643-131	15080	1
26	HEX HD CAPSCREW	B1412	15991	2
27	FLAT WASHER	K14	15991	4
28	LOCKWASHER	J14	15991	2
29	HEX NUT	D14	15991	2
30	HEX HD CAPSCREW	B0705	15991	4
31	FLAT WASHER	K07	15991	6
32	LOCKWASHER	J07	15991	4
33	HEX NUT	D07	15991	4
34	COUNTERWEIGHT PLATE	33643-119	15080	2
35	PRIME AIRE DECAL	38812-078	---	3
36	HEX HD CAPSCREW	B0813	15991	6
37	HEX NUT	D08	15991	6
38	LOCKWASHER	J08	15991	6
39	FLAT WASHER	K08	15991	6
	NOT SHOWN:			
	STRAINER	46641-012	24150	1
	CABLE TIE	27111-218	---	1

* INDICATES PARTS RECOMMENDED FOR STOCK

THE GORMAN-RUPP COMPANY • MANSFIELD, OHIO

GORMAN-RUPP OF CANADA LIMITED • ST. THOMAS, ONTARIO, CANADA Printed in U.S.A.



THE GORMAN-RUPP COMPANY • MANSFIELD, OHIO

GORMAN-RUPP OF CANADA LIMITED • ST. THOMAS, ONTARIO, CANADA

Printed in U.S.A.

August 20, 1997

© Copyright by the Gorman-Rupp Company

3 of 20

Rev. D 07/17/01

Page 64.12 A2

S/N 1124179 Up
PUMP ISSUE 2

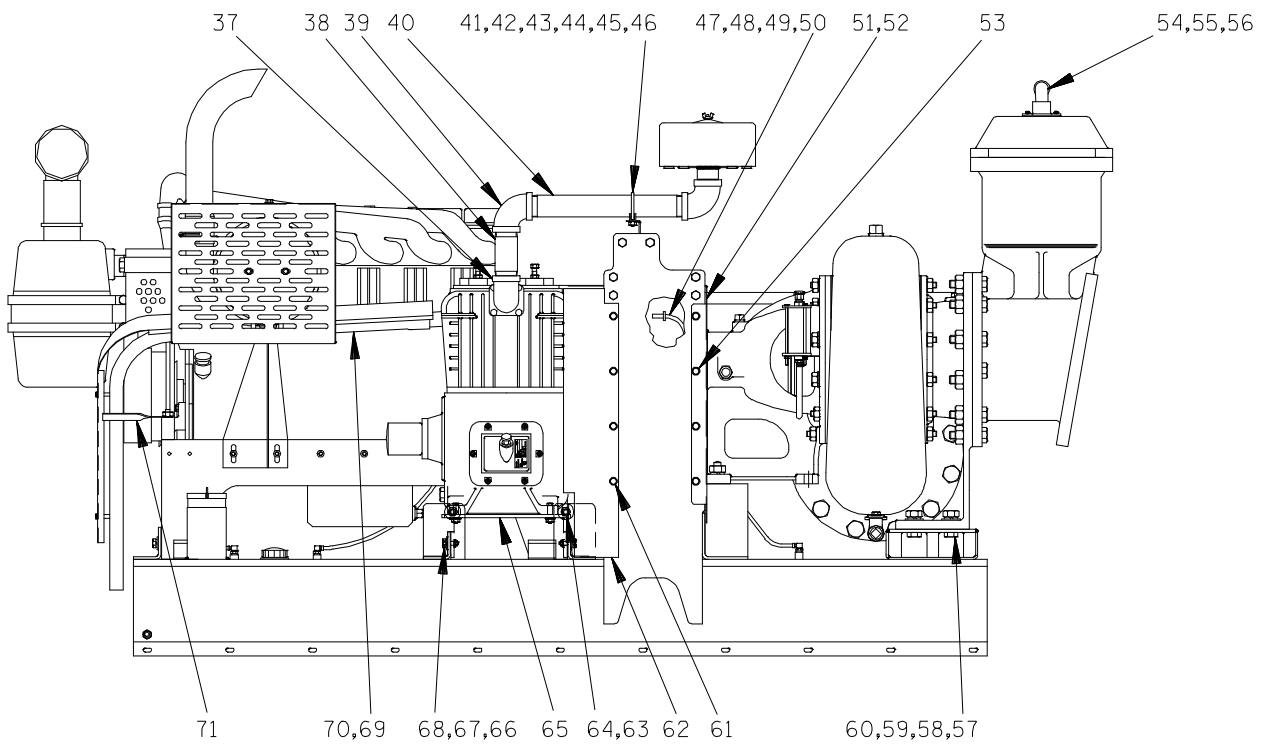
PARTS LIST
Pump Sub-Assembly

ITEM NO.	PART NAME	PART NUMBER	MAT'L CODE	QTY	ITEM NO.	PART NAME	PART NUMBER	MAT'L CODE	QTY
1	PUMP ASSEMBLY	PA12A60-B	----	1	20	MALE CONNECTOR	26523-463	----	1
2	HEX HD CAPSCREW	B0806	15991	12	21	REDUCER BUSHING	AP0604	15079	1
3	LOCKWASHER	J08	15991	12	22	FLANGE W/GSKT	29332-151	----	1
4	HEX NUT	D08	15991	12	23	FUEL GAUGE	29332-132	----	1
5	HOIST BAIL	44718-027	----	1	24	#10 TAPSCREW	21281-444	----	6
6	GUARD-ENGINE SIDE	34266-007	15120	1	25	FUEL TANK ASSY	46711-068	----	1
7	FLNGE HD CAPSCREW	21634-515	----	12		-FUEL CAP	29332-106	----	1
8	ENGINE MOD ASSY	44311-008	----	1	26	FUEL PICKUP	29332-142	----	1
9	FUEL LINE	11308K	----	1	27	HOSE ASSY	46341-796	----	1
10	HOSE CLAMP	26518-641	----	2	28	MALE CONNECTOR	S1447	----	1
11	HOSE BARB FITTING	26523-443	----	1	29 *	DRIVE BELT-PUMP	24154-001	----	1
12	MALE CONNECTOR	26523-463	----	1	30	SPROCKET	24271-003	----	1
13	REDUCER BUSHING	AP0604	15079	1	31	BUSHING	24131-535	----	1
14	HEX HD CAPSCREW	B0807	15991	6	32	FLANGE HD CAPSCREW	21634-505	----	5
15	LOCKWASHER	J08	15991	6	33	HEX HD CAPSCREW	B1211	15991	2
16	SQUARE WASHER	21168-025	----	6	34	HEX NUT	D12	15991	2
17	SHIM SET	48261-045	----	1	35	LOCKWASHER	J12	15991	2
18	FUEL LINE	11308F	----	1	36	FLAT WASHER	K12	15991	2
19	HOSE CLAMP	26518-641	----	1					

* INDICATES PARTS RECOMMENDED FOR STOCK

THE GORMAN-RUPP COMPANY • MANSFIELD, OHIO

GORMAN-RUPP OF CANADA LIMITED • ST. THOMAS, ONTARIO, CANADA Printed in U.S.A.



THE GORMAN-RUPP COMPANY • MANSFIELD, OHIO

GORMAN-RUPP OF CANADA LIMITED • ST. THOMAS, ONTARIO, CANADA

Printed in U.S.A.

August 20, 1997

© Copyright by the Gorman-Rupp Company

5 of 20

Rev. D 07/17/01

Page 64.12 A2

S/N 1124179 Up
PUMP ISSUE 2

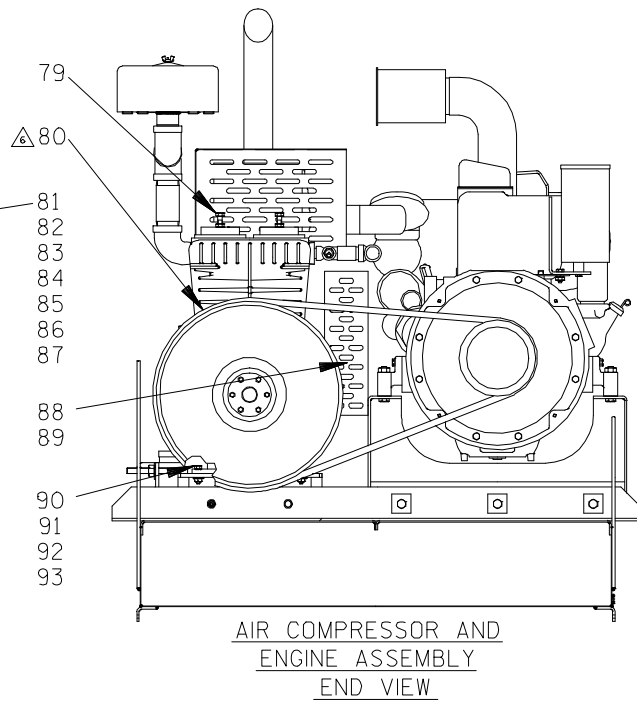
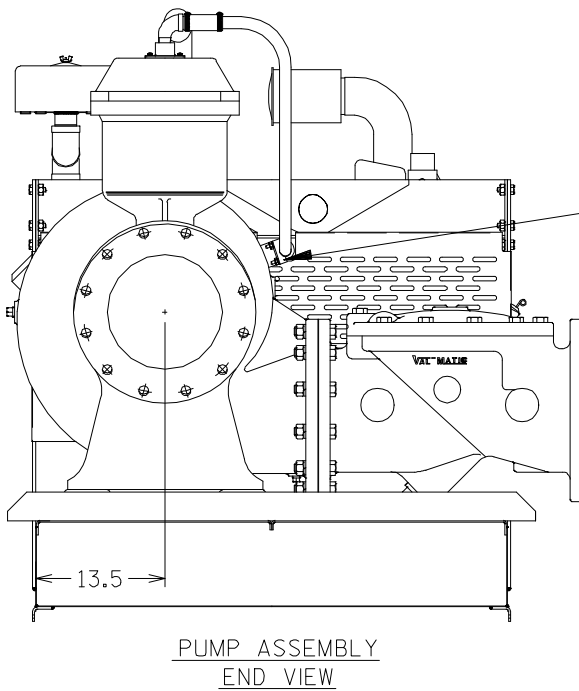
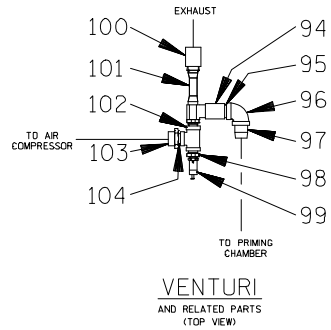
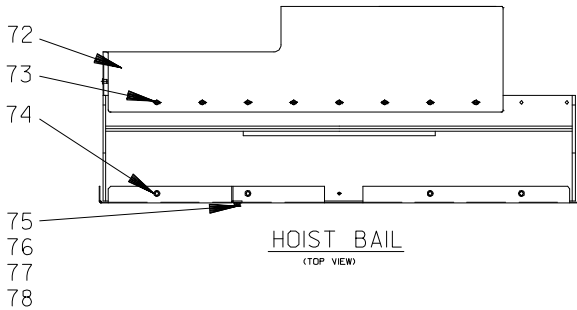
PARTS LIST
Pump Sub-Assembly

ITEM NO.	PART NAME	PART NUMBER	MAT'L CODE	QTY	ITEM NO.	PART NAME	PART NUMBER	MAT'L CODE	QTY
37	STREET ELBOW	RS32	11999	1	55	STREET ELBOW	RS16	11999	1
38	PIPE NIPPLE	T3224	15079	1	56	REDUCER BUSHING	AP2016	11999	1
39	PIPE ELBOW	R32	11999	2	57	HEX HD CAPSCREW	B1211	15991	4
40	PIPE NIPPLE	T3272	15079	1	58	HEX NUT	D12	15991	4
41	PIPE SUPPORT BRKT	34265-032	15120	1	59	LOCKWASHER	J12	15991	4
42	MUFFLER CLAMP	29334-261	---	1	60	FLAT WASHER	K12	15991	4
43	HEX HD CAPSCREW	B0805	15991	1	61	FLANGE HD CAPSCREW	21634-515	---	8
44	HEX NUT	D08	15991	1	62	GUARD-FLYWHEEL	34518-016	15120	1
45	LOCKWASHER	J08	15991	1	63	HEX NUT	D10	15991	4
46	FLAT WASHER	K08	15991	1	64	FLAT WASHER	K10	15991	4
47	FUEL LINE	11308F	---	1	65	A/C MTG BRKT	41881-529	24150	1
48	HOSE CLAMP	26518-641	---	1	66	HEX HD CAPSCREW	B0606	15991	4
49	MALE CONNECTOR	26523-463	---	1	67	LOCKWASHER	J06	15991	4
50	REDUCER BUSHING	AP0604	15079	1	68	SQUARE WASHER	21168-023	---	4
51	GUARD-PUMP END	34266-021	15120	1	69	EXH PIPE ASSY	46241-511	---	1
52	GUARD-PUMP END	34266-022	15120	1	70	MUFFLER CLAMP	29334-254	---	2
53	FLANGE HD CAPSCREW	21634-515	---	8	71	EXH PIPE BRKT	34877-022	15120	1
54	PIPE NIPPLE	T16	15079	1					

* INDICATES PARTS RECOMMENDED FOR STOCK

THE GORMAN-RUPP COMPANY • MANSFIELD, OHIO

GORMAN-RUPP OF CANADA LIMITED • ST. THOMAS, ONTARIO, CANADA Printed in U.S.A.



THE GORMAN-RUPP COMPANY • MANSFIELD, OHIO

GORMAN-RUPP OF CANADA LIMITED • ST. THOMAS, ONTARIO, CANADA

Printed in U.S.A.

August 20, 1997

© Copyright by the Gorman-Rupp Company

7 of 20

Rev. D 07/17/01

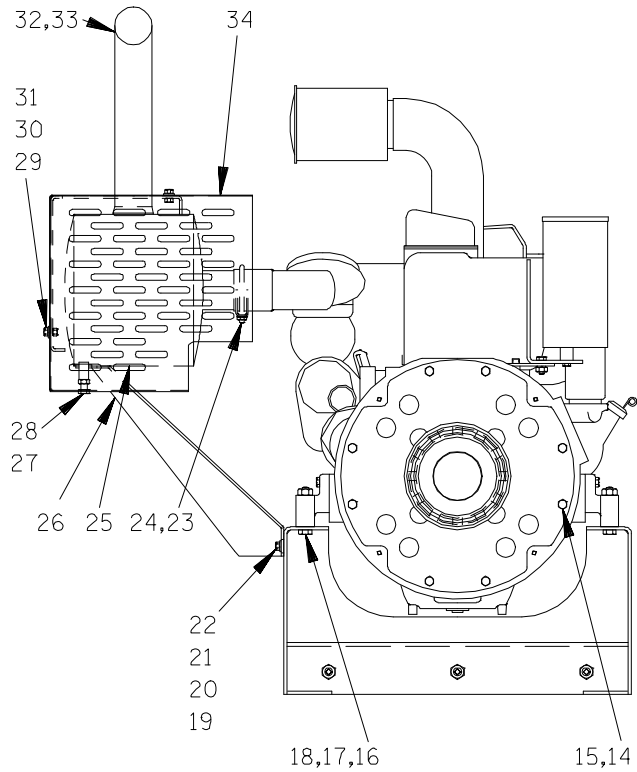
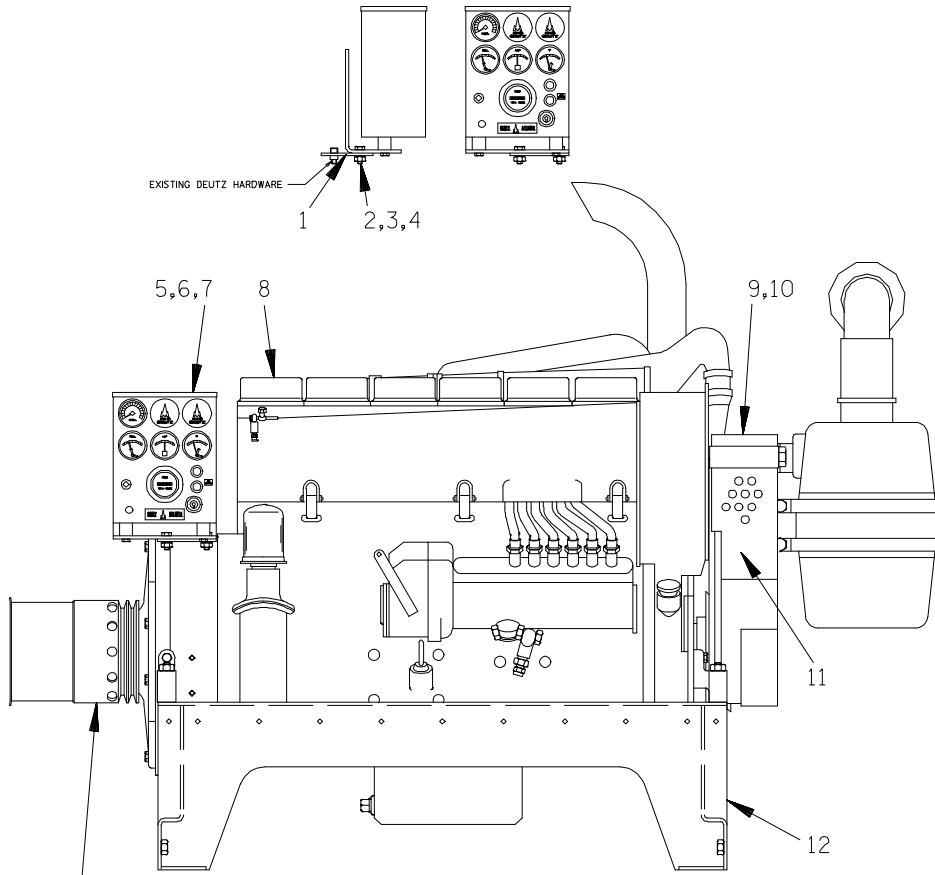
Page 64.12 A2

S/N 1124179 Up
PUMP ISSUE 2

PARTS LIST
Pump Sub-Assembly

ITEM NO.	PART NAME	PART NUMBER	MAT'L CODE	QTY	ITEM NO.	PART NAME	PART NUMBER	MAT'L CODE	QTY
72	GUARD-TOP	34263-003	15120	1	95	PIPE NIPPLE	T16	15079	1
73	FLANGE HD CAPSCREW	21634-505	----	8	96	PIPE ELBOW	R16	15079	1
74	FLANGE HD CAPSCREW	21634-505	----	4	97	PIPE NIPPLE	T1608	15079	1
75	HEX HD CAPSCREW	B0503	15991	2	98	REDUCER BUSHING	AP1204	15079	1
76	FLAT WASHER	K05	15991	2	99	RELIEF VALVE	26662-027	----	1
77	LOCKWASHER	J05	15991	2	100	PIPE COUPLING	AE16	15079	1
78	WELDNUT	21768-427	----	2	101	VENTURI	26817-001	----	1
79	AIR COMPRESSOR ASSY	46181-901	----	1	102	PIPE TEE	U12	11999	1
80 *	BELT-AIR COMP	24166-001	----	2	103	REDUCER BUSHING	AP3212	11999	1
81	AIR PIPE BRKT	33659-027	15120	1	104	PIPE NIPPLE	T12	15079	1
82	MUFFLER CLAMP	29334-252	----	1	NOT SHOWN:				
83	FLAT WASHER	K10	15991	1		GRD WARNING STICKER	38816-063	----	2
84	LOCKWASHER	J10	15991	1		G-R DECAL	GR-06	----	2
85	TUBING	31912-033	15000	1		LUBE DECAL	38816-079	----	2
86	HOSE CLAMP	26518-667	----	4		ROTATION DECAL	2613M	----	1
87	HOSE 1.5" X 4.0"	18533-309	----	1		WARNING DECAL	38816-175	----	1
88	BELT GUARD	34224-022	1520	1		WARNING DECAL	38816-218	----	1
89	FLNGED HD CAPSCREW	21634-505	----	2		DISCHARGE STICKER	6588BJ	----	1
90	HEX HD CAPSCREW	B0809	15991	4		CAUTION DECAL	2613FJ	----	1
91	LOCKWASHER	J08	15991	4		SUCTION STICKER	6588AG	----	1
92	FLAT WASHER	K08	15991	4		INSTRUCTION DECAL	38818-128	----	1
93	HEX NUT	D08	15991	4		INSTRUCTION TAG	38817-024	----	1
94	PIPE COUPLING	AE16	15079	1		WARNING DECAL	2613FE	----	1

* INDICATES PARTS RECOMMENDED FOR STOCK



THE GORMAN-RUPP COMPANY • MANSFIELD, OHIO

GORMAN-RUPP OF CANADA LIMITED • ST. THOMAS, ONTARIO, CANADA

Printed in U.S.A.

S/N 1124179 Up
PUMP ISSUE 2

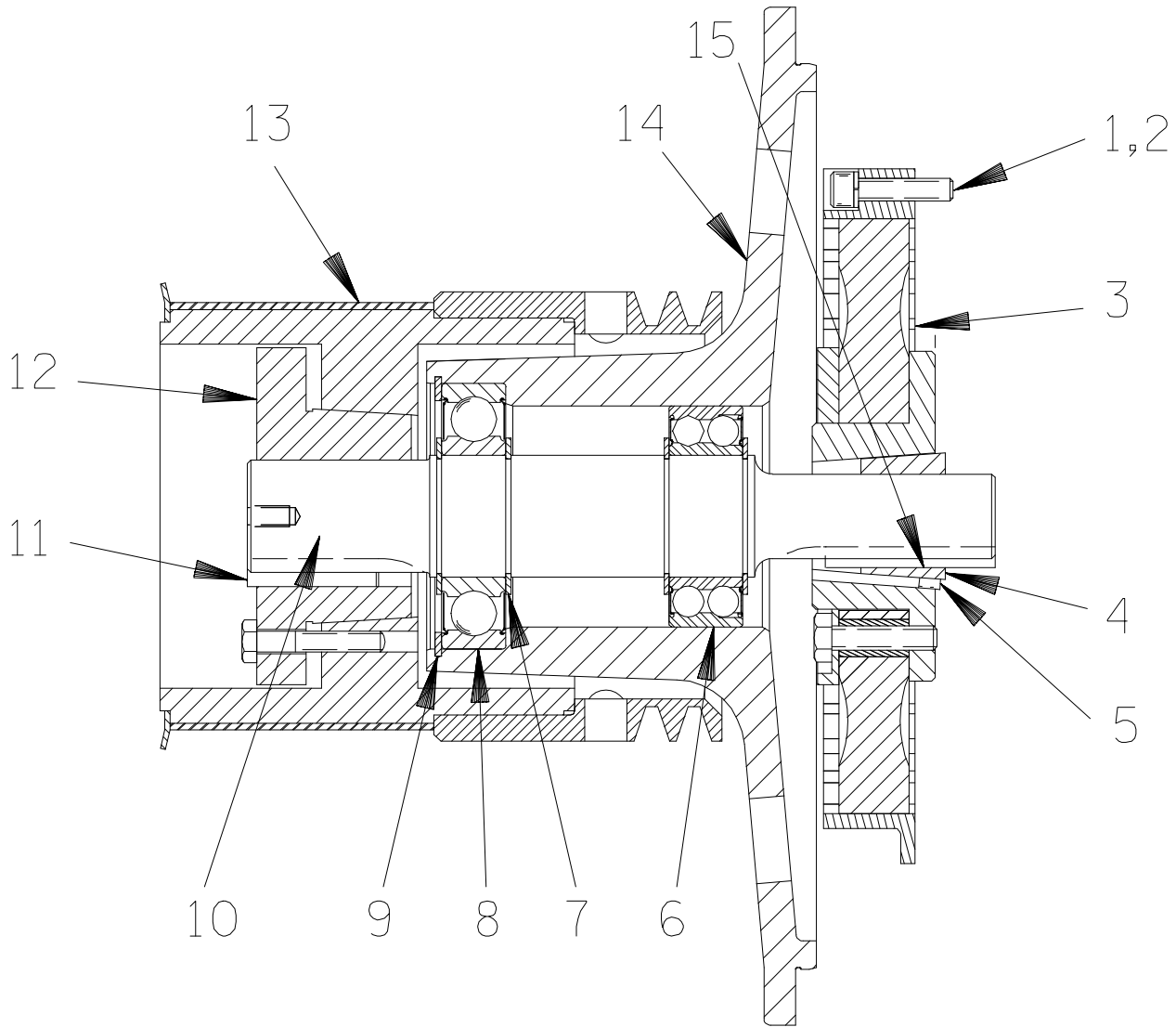
PARTS LIST
Engine Modification Assembly

ITEM NO.	PART NAME	PART NUMBER	MAT'L CODE	QTY	ITEM NO.	PART NAME	PART NUMBER	MAT'L CODE	QTY
1	CTRL PANEL MTG PLT	33273-158	15120	1	18	HEX NUT	D08	15991	4
2	HEX HD CAPSCREW	B0604	15991	2	19	HEX HD CAPSCREW	B0604 1/2	15991	2
3	LOCK WASHER	J06	15991	2	20	LOCKWASHER	J06	15991	2
4	HEX NUT	D06	15991	2	21	FLAT WASHER	K06	15991	2
5	CAUTION DECAL	2613FJ	---	1	22	HEX NUT	D06	15991	2
6	WARNING DECAL	2613FE	---	1	23	MUFFLER CLAMP	29334-264	---	1
7	CNTRL PANEL (DEUTZ)	29277-012	---	1	24	MANIFOLD PIPE ASSY	46281-005	24150	1
8	DEUTZ BF6L ENGINE	29217-101	---	1	25	MUFFLER ASSY	46211-027	24150	1
9	ALT FAN GUARD CAP	42353-952	24150	1	26	SUPPORT BRKT ASSY	41824-009	24150	1
10	POP RIVET	21122-153	---	4	27	HEX HD CAPSCREW	B0807	15991	3
11	V-BELT GUARD ASSY	29277-141	---	1	28	HEX JAM NUT	AT08	15991	3
12	PEDESTAL MTG BRKT	41414-012	---	1	29	HEX HD CAPSCREW	B0603	15991	3
13	ENGINE DRIVE ASSY	44162-152	---	1	30	LOCKWASHER	J06	15991	1
14	HEX HD CAPSCREW	22645-164	---	8	31	FLAT WASHER	K06	15991	1
15	LOCKWASHER	21171-511	---	8	32	MUFFLER CLAMP	29334-264	---	1
16	HEX HD CAPSCREW	B0814	15991	4	33	EXHAUST PIPE	31911-004	15000	1
17	LOCKWASHER	J08	15991	4	34	MUFFLER GRD ASSY	42331-045	24150	1

* INDICATES PARTS RECOMMENDED FOR STOCK

THE GORMAN-RUPP COMPANY • MANSFIELD, OHIO

GORMAN-RUPP OF CANADA LIMITED • ST. THOMAS, ONTARIO, CANADA Printed in U.S.A.



THE GORMAN-RUPP COMPANY • MANSFIELD, OHIO

GORMAN-RUPP OF CANADA LIMITED • ST. THOMAS, ONTARIO, CANADA

Printed in U.S.A.

August 20, 1997

© Copyright by the Gorman-Rupp Company

11 of 20

Rev. D 07/17/01

Page 64.12 A2

S/N 1124179 Up
PUMP ISSUE 2

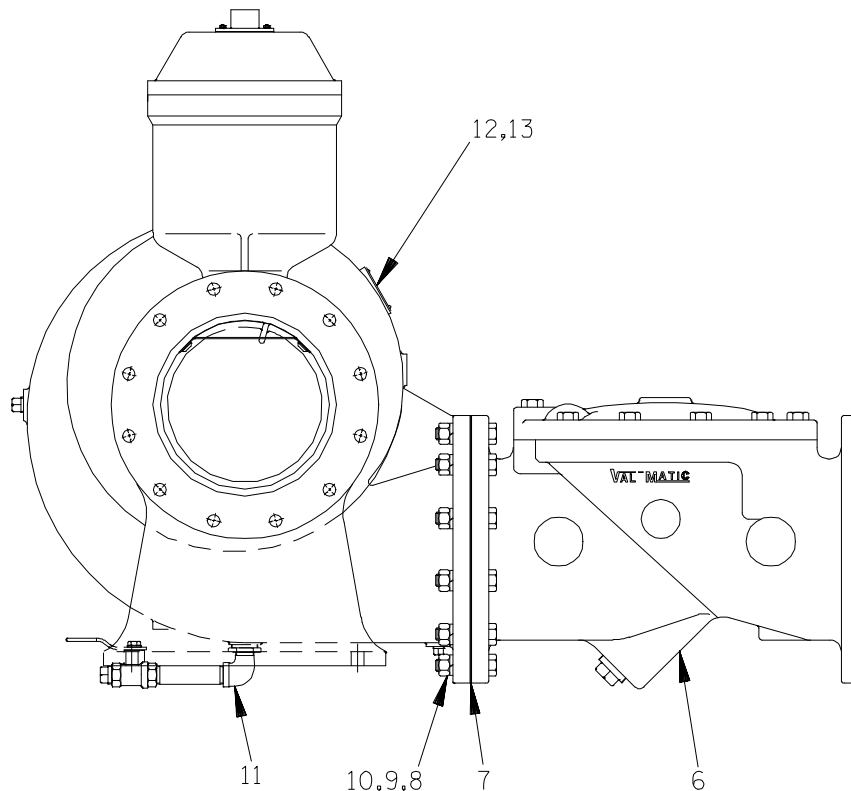
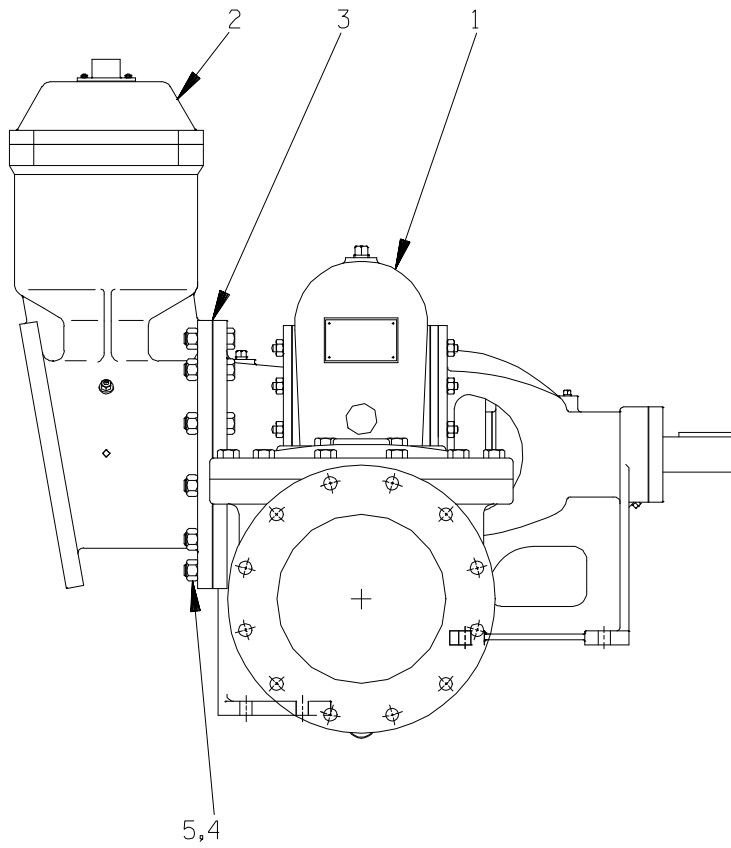
PARTS LIST
Engine Drive Assembly

ITEM NO.	PART NAME	PART NUMBER	MAT'L CODE	QTY
1	SOCKET HEAD CAPSCREW	22644—220	----	8
2	LOCKWASHER	21171—536	----	8
3	COUPLING W/O BUSHING	24391—103	----	1
4	BUSHING	24131—496	----	1
5	—ALLEN HD SETSCREW	GA0703 1/2	15990	2
6	* BALL BEARING	23431—012	----	1
7	RETAINING RING	S215	----	4
8	* BALL BEARING	23282—012	----	1
9	RETAINING RING	24121—075	----	1
10	OUTPUT SHAFT	38512—051	1706H	1
11	* OUTPUT SHAFT KEY (DRIVE END)	N0807	15990	1
12	TAPERLOCK BUSHING	24131—526	----	1
13	DRIVE SPROCKET	44162—901	----	1
14	BEARING HOUSING	38251—001	11010	1
15	* OUTPUT SHAFT KEY (DRIVEN END)	N0612	15990	1

* INDICATES PARTS RECOMMENDED FOR STOCK

THE GORMAN-RUPP COMPANY • MANSFIELD, OHIO

GORMAN-RUPP OF CANADA LIMITED • ST. THOMAS, ONTARIO, CANADA Printed in U.S.A.



THE GORMAN-RUPP COMPANY • MANSFIELD, OHIO

GORMAN-RUPP OF CANADA LIMITED • ST. THOMAS, ONTARIO, CANADA

Printed in U.S.A.

S/N 1124179 Up
PUMP ISSUE 2

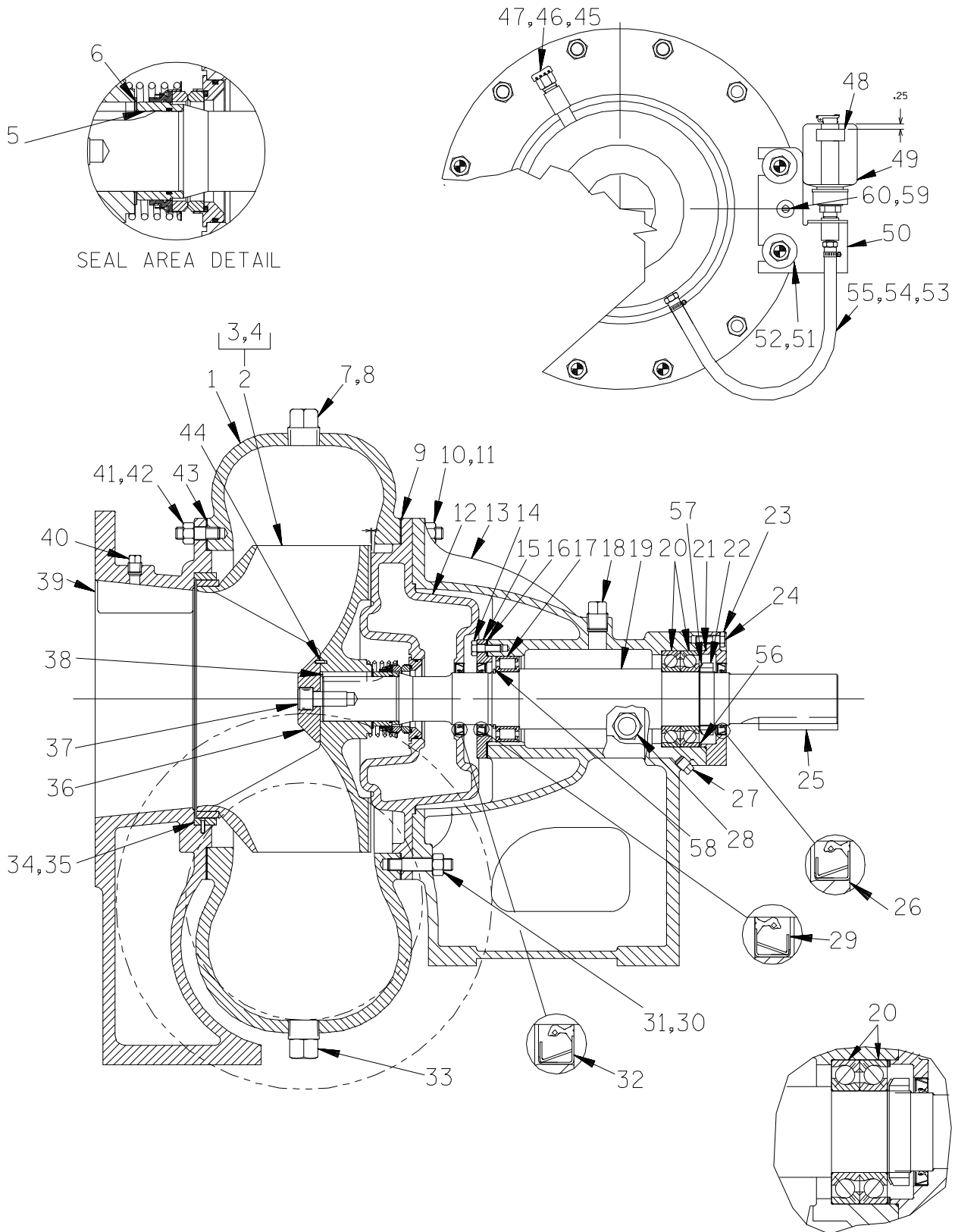
PARTS LIST
PA12A60—B Pump Model Assembly

ITEM NO.	PART NAME	PART NUMBER	MAT'L CODE	QTY
1	PUMP SUB-ASSEMBLY	612M60—B	---	1
2	PRIMING CHAMBER ASSY	46112—701	---	1
3	FLANGE GASKET	4991G	18000	1
4	HEX HD CAPSCREW	B1412	15991	12
5	HEX NUT	D14	15991	12
6	CHECK VALVE ASSY	26642—128	---	1
	—FLAPPER	26688—003	---	1
	—COVER GASKET	26688—004	---	1
7	FLANGE GASKET	4991G	18000	1
8	HEX HD CAPSCREW	B1416	15991	12
9	LOCKWASHER	J14	15991	12
10	HEX NUT	D14	15991	12
11	DRAIN VALVE ASSY	46343—262	---	1
12	NAME PLATE	38818—127	13000	1
13	DRIVE SCREW	BM#04—03	17000	4
14	HEX HD CAPSCREW	B0604	15991	1

* INDICATES PARTS RECOMMENDED FOR STOCK

THE GORMAN-RUPP COMPANY • MANSFIELD, OHIO

GORMAN-RUPP OF CANADA LIMITED • ST. THOMAS, ONTARIO, CANADA Printed in U.S.A.



THE GORMAN-RUPP COMPANY • MANSFIELD, OHIO

GORMAN-RUPP OF CANADA LIMITED • ST. THOMAS, ONTARIO, CANADA

Printed in U.S.A.

August 20, 1997

© Copyright by the Gorman-Rupp Company

15 of 20

Rev. D 07/17/01

Page 64.12 A2

S/N 1124179 Up
PUMP ISSUE 2

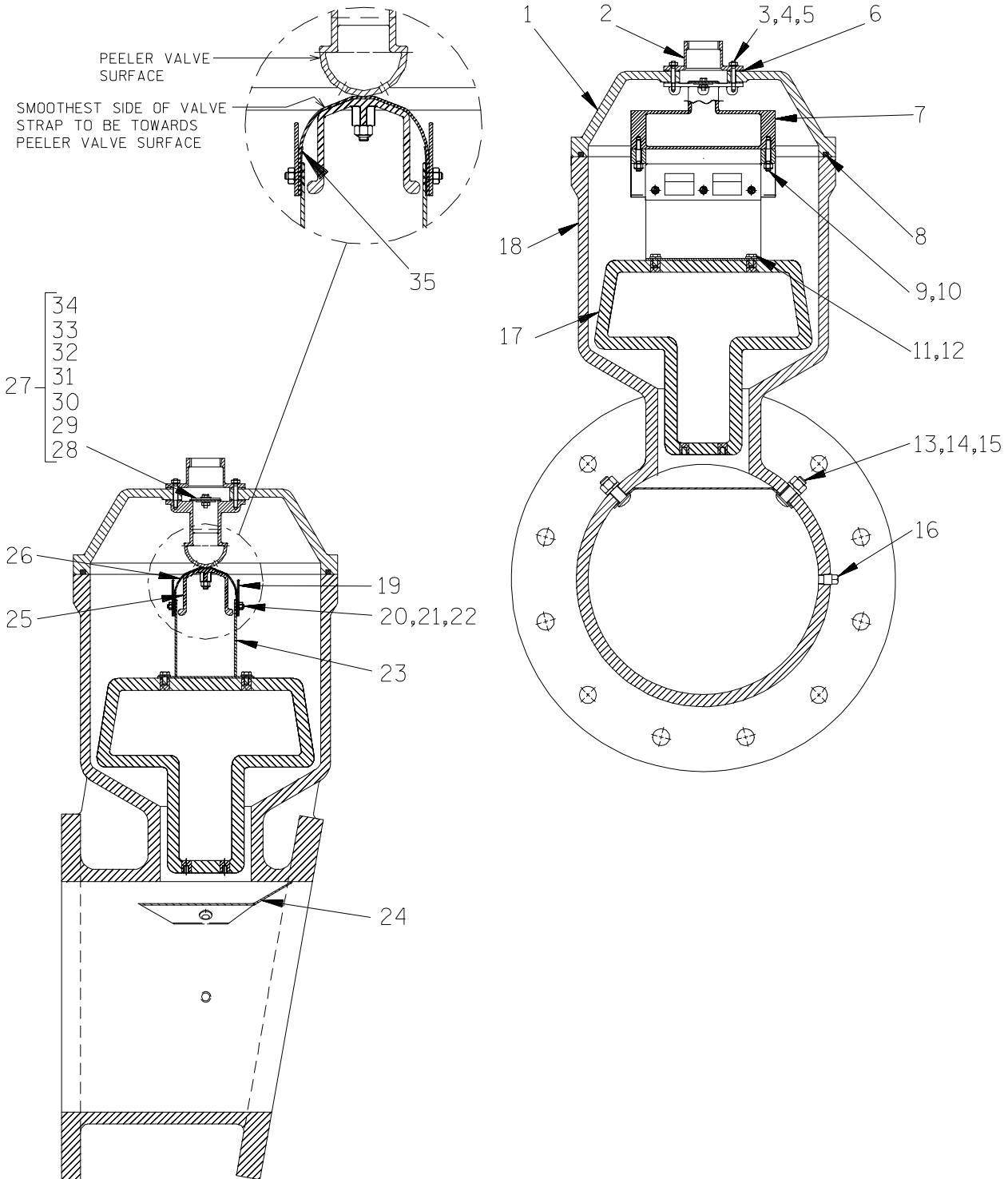
PARTS LIST
612M60-B Pump Model Assembly

ITEM NO.	PART NAME	PART NUMBER	MAT'L CODE	QTY	ITEM NO.	PART NAME	PART NUMBER	MAT'L CODE	QTY
1	VOLUTE CASING	38219-305	10010	1	36 *	IMP WASHER	31167-022	15030	1
2 *	IMP & WEAR RING ASSY	46151-022	24110	1	37	SOC HD CAPSCREW	BD1206	15990	1
3	-IMPELLER	38621-729	11010	1	38 *	IMPELLER KEY	N0809	15990	1
4	-WEAR RING	4182A	11030	1	39	SUCTION HEAD	4180	10010	1
5 *	MECHANICAL SEAL	46512-109	---	1	40	PIPE PLUG	P06	15079	1
6 *	SHIM SET	48261-033	---	REF	41	STUD	C1009	15991	12
7	PIPE PLUG	P12	15079	2	42	HEX NUT	D10	15991	12
8	PIPE PLUG	P06	15079	1	43 *	SUCTION HEAD GASKET	4180G	18000	1
9 *	VOLUTE CASING GSKT	38674-434	18000	1	44	ROLL PIN	S2197	---	1
10	STUD	C1011	15991	10	45	AIR VENT	S1703	---	1
11	HEX NUT	D10	15991	10	46	PIPE NIPPLE	T0608	15079	1
12	SEAL PLATE	38272-713	10010	1	47	PIPE COUPLING	AE06	15079	1
13	PEDESTAL	38257-520	10000	1	48	OIL LEVEL DECAL	38816-123	---	1
14	HEX HD CAPSCREW	B0605	15991	6	49	BOTTLE OILER	26713-004	---	1
15	INBOARD BEARING CAP	38322-425	10010	1	50	OILER BRACKET ASSY	41881-618	24150	1
16 *	BEARING CAP GASKET	4184G	18000	1	51	FLAT WASHER	K10	15991	2
17 *	ROLLER BEARING	23528-005	---	1	52	LOCK WASHER	J10	15991	2
18	VENTED PIPE PLUG	38649-009	15079	1	53	MALE CONNECTOR	26523-409	---	2
19 *	IMPELLER SHAFT	38512-522	17040	1	54	HOSE 3/8 X 11' LG	18513-054	---	1
20 *	OUTBRD BALL BEARING	23413-015	---	2	55	HOSE CLAMP	26518-642	---	2
21 *	BRG CAP O-RING	25152-249	---	1	56	BRG ADJ SHIM SET	48261-055	---	1
22	BEARING LOCKNUT	23962-015	---	1	57	LOCKING TAB WASHER	23962-515	---	1
23	BEARING CAP	38322-429	10000	1	58	RETAINING RING	24124-057	---	1
24	HEX HD CAPSCREW	B0605	15991	6	59	RD HD MACH SCREW	X0405	15991	2
25 *	SHAFT KEY	N1016	15990	1	60	LOCKWASHER	J04	15991	2
26 *	BRG CAP OIL SEAL	25258-845	---	1	NOT SHOWN:				
27	PEDESTAL DRAIN PLUG	P04	15079	1		STRAINER	46641-012	24150	1
28	SIGHT GAUGE	S1471	---	2		INSTRUC PAPER TAG	38817-024	---	1
29 *	BRG CAP OIL SEAL	25258-845	---	1		SUCTION DECAL	6588AG	---	1
30	STUD	C1013	15991	2		DISCHARGE DECAL	6588BJ	---	1
31	HEX NUT	D10	15991	2		LUBRICATION DECAL	38816-079	---	2
32 *	SEAL PLATE OIL SEAL	25258-845	---	1		ROTATION DECAL	2613M	---	1
33	PIPE PLUG	P24	10009	1		INSTRUC PAPER TAG	38817-011	---	1
34 *	SUCT HEAD WEAR RING	4181A	10000	1		NAME PLATE	38818-127	13990	1
35	SPIRAL PIN	21137-123	---	3		DRIVE SCREW	BM#04-03	17000	4

* INDICATES PARTS RECOMMENDED FOR STOCK

THE GORMAN-RUPP COMPANY • MANSFIELD, OHIO

GORMAN-RUPP OF CANADA LIMITED • ST. THOMAS, ONTARIO, CANADA Printed in U.S.A.



THE GORMAN-RUPP COMPANY • MANSFIELD, OHIO

GORMAN-RUPP OF CANADA LIMITED • ST. THOMAS, ONTARIO, CANADA

Printed in U.S.A.

August 20, 1997

© Copyright by the Gorman-Rupp Company

17 of 20

Rev. D 07/17/01

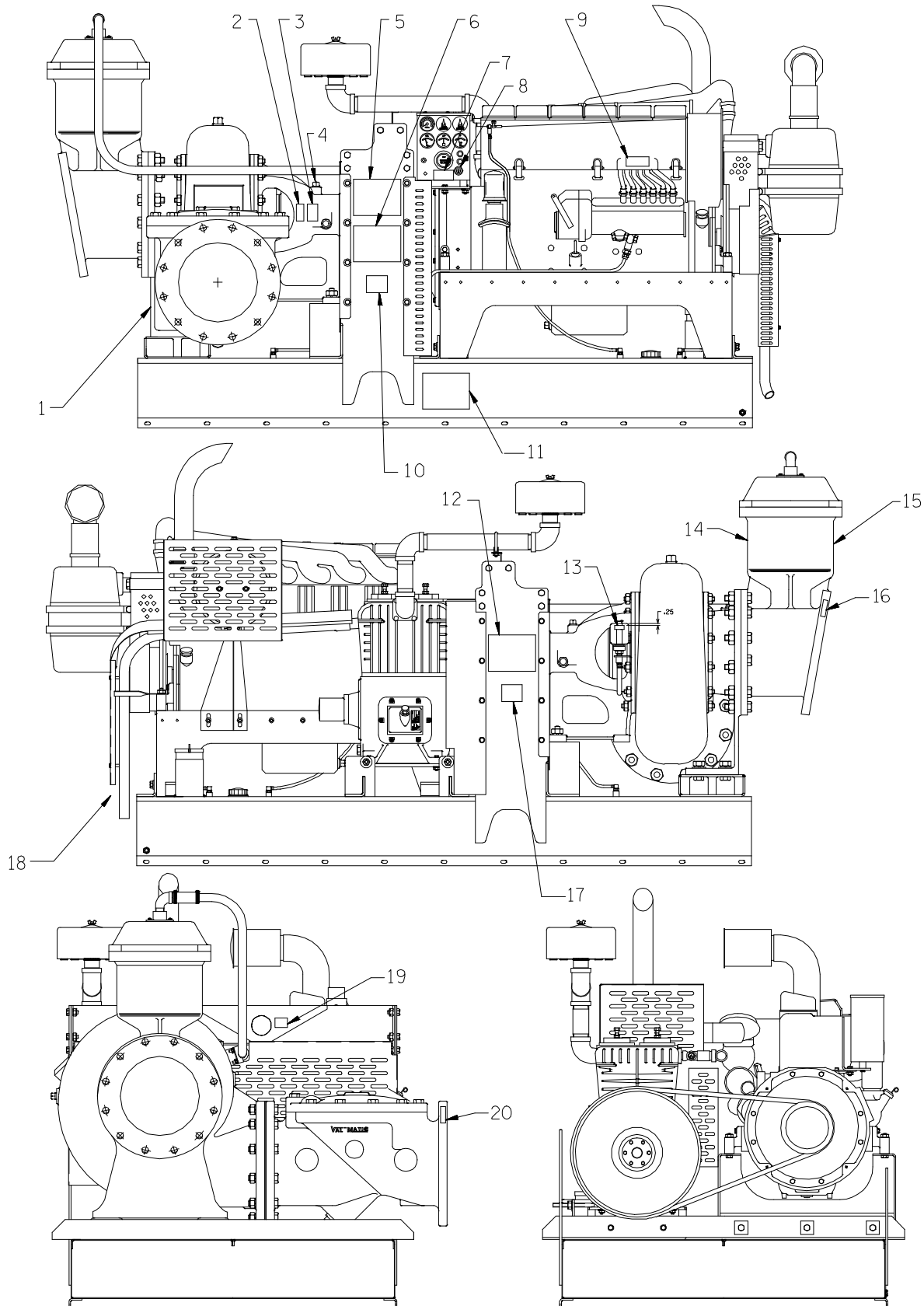
Page 64.12 A2

S/N 1124179 Up
PUMP ISSUE 2

PARTS LIST
46112—702 Peeler Type Priming Valve

ITEM NO.	PART NAME	PART NUMBER	MAT'L CODE	QTY	ITEM NO.	PART NAME	PART NUMBER	MAT'L CODE	QTY
1	PRIMING CHAMBER LID	38346—613	13000	1	21	LOCKWASHER	J#10	17000	6
2	PEELER VALVE NECK	38349—405	14000	1	22	HEX NUT	D#10	17000	6
3	LOCKWASHER	J#10	17000	4	23	VLV STRAP BRKT ASSY	41881—523	2415X	1
4	HEX NUT	D#10	17000	4	24	INDUCTOR GUARD	34872—010	17000	1
5	STUD	21332—038	---	4	25	CLAMP PLATE	38349—406	14000	1
6 *	NECK GASKET	38683—266	19020	1	26	VALVE STRAP	33276—041	19410	1
7	VALVE BODY	38343—014	14000	1	27	CHECK VALVE ASSY	46411—112	---	1
8 *	GASKET STRIP-42" LG	18515—031	---		28 *	—CHECK VALVE	38671—413	19020	1
9	STUD	C0406 1/2	17000	2	29	—LOCKWASHER	J#10	17000	1
10	HEX LOCK NUT	BC04	17000	2	30	—HEX NUT	D#10	17000	1
11	HEX HD CAPSCREW	B0402 1/2	17000	4	31	—SMALL VALVE WEIGHT	21161—810	---	1
12	LOCKWASHER	J04	17000	4	32	—HEX HD CAPSCREW	B#10—02	17000	1
13	BUTTON HD CAPSCREW	CM0806	17000	2	33	—LARGE VALVE WEIGHT	21161—811	---	1
14	HEX NUT	D08	17000	2	34	—SEALING WASHER	25123—056	---	1
15	LOCKWASHER	J08	17000	2	35	VALVE STRP PROTECTOR	33271—019	19000	2
16	PIPE PLUG	P04	15079	1		NOT SHOWN:			
17 *	PRIMING VALVE FLOAT	38349—404	19220	1		HEX HD CAPSCREW	B0807	15991	4
18	PRIMING CHAMBER	38343—015	10010	1		FLANGE GASKET	4991G	18000	1
19	GUIDE PLATE	33522—009	17000	2		HEX HD CAPSCREW	B1412	15991	12
20	FLAT HD CAPSCREW	F#10—03	17000	6		HEX NUT	D14	15991	12

* INDICATES PARTS RECOMMENDED FOR STOCK



THE GORMAN-RUPP COMPANY • MANSFIELD, OHIO

GORMAN-RUPP OF CANADA LIMITED • ST. THOMAS, ONTARIO, CANADA

Printed in U.S.A.

S/N 1124179 Up
PUMP ISSUE 2

PARTS LIST
Pump Decals And Tags

ITEM NO.	PART NAME	PART NUMBER	MAT'L CODE	QTY
1	PRIME AIRE DECAL	38812—078	---	1
2	ROTATION DECAL	2613M	---	1
3	LUBRICATION DECAL	38816—079	---	2
4	INSTRUCTION TAG	38817—024	---	1
5	PUMP OPERATION INSTRUCTION DECAL	38818—128	---	1
6	G-R DECAL	GR06	---	1
7	WARNING DECAL	2613FE	---	1
8	ENGINE START-UP TAG	38816—269	---	1
9	CAUTION DECAL	2613FJ	---	1
10	WARNING DECAL	38816—063	---	1
11	PRIME AIRE DECAL	38812—078	---	2
12	G-R DECAL	GR06	---	1
13	OIL LEVEL DECAL	38816—123	---	1
14	WARNING DECAL	38816—175	---	1
15	G-R DECAL	GR06	---	1
16	SUCTION STICKER	6588AG	---	1
17	WARNING DECAL	38816—063	---	1
18	BATTERY TAG	38818—506	---	1
19	WARNING DECAL	38816—218	---	2
20	DISCHARGE STICKER	6588BJ	---	1

* INDICATES PARTS RECOMMENDED FOR STOCK

THE GORMAN-RUPP COMPANY • MANSFIELD, OHIO

GORMAN-RUPP OF CANADA LIMITED • ST. THOMAS, ONTARIO, CANADA Printed in U.S.A.

**For U.S. and International Warranty Information,
Please Visit www.grpumps.com/warranty**

or call:

U.S.: 419-755-1280

International: +1-419-755-1352

**For Canadian Warranty Information,
Please Visit www.grcanada.com/warranty**

or call:

519-631-2870