

Use With:  
OM-04402  
MR-04403

PUBLICATION NUMBER PL-04405  
Pump Issue 1  
May 2, 1996  
Rev. A



**PRIME-AIRE<sup>TM</sup> SERIES**  
**PUMP MODEL**  
**PA12A60-B-BF6L**

**MANUAL**  
**PART 2 of 3**

**PARTS**  
**LIST**  
**WITH**  
**PERFORMANCE CURVE**

**THE GORMAN-RUPP COMPANY • MANSFIELD, OHIO**

GORMAN-RUPP OF CANADA LIMITED • ST. THOMAS, ONTARIO, CANADA Printed in U.S.A.

©Copyright by the Gorman-Rupp Company



The engine exhaust from this product contains chemicals known to the State of California to cause cancer, birth defects or other reproductive harm.

## PERFORMANCE CURVE – SECTION A

### RECORDING MODEL AND SERIAL NUMBERS

Please record the pump model and serial number in the spaces provided below and in the separate Installation/Operation Manual accompanying your pump. Your Gorman-Rupp distributor needs this information when you require parts or service.

Pump Model: \_\_\_\_\_

Serial Number: \_\_\_\_\_

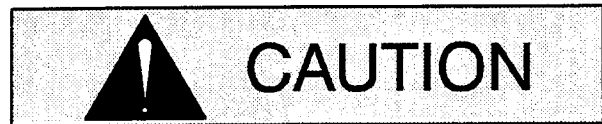
### WARRANTY INFORMATION

The pump warranty is provided as part of Gorman-Rupp's support program for customers who operate and maintain their equipment as described in this manual and other accompanying literature. Please note that should the equipment be abused or modified to change its performance beyond the original factory specifications, the warranty will become void and any claim will be denied.

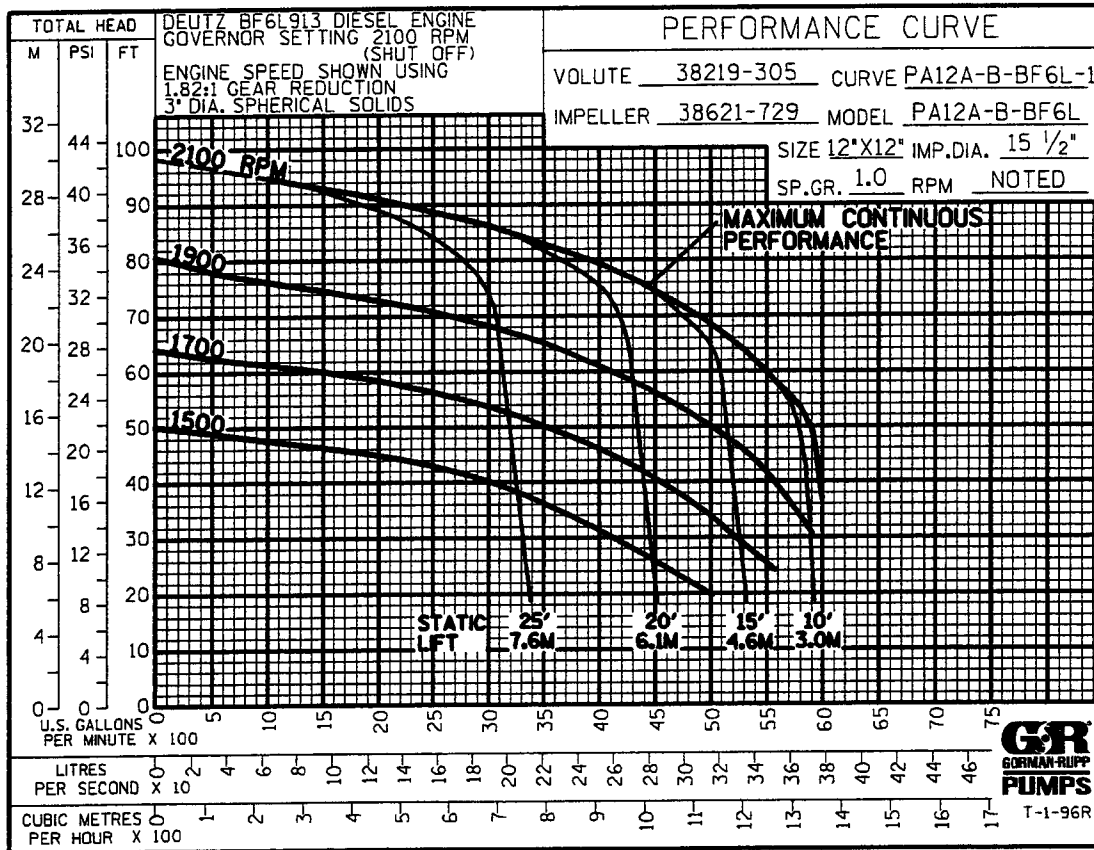
### PERFORMANCE CURVE

The performance curve on the following page is based on 70° F (21° C) clear water at sea level with minimum suction lift. Since pump installations are seldom identical, your performance may be different due to such factors as viscosity, specific gravity, elevation, temperature, and impeller trim.

If your pump serial number is followed by an "N", your pump is **NOT** a standard production model. Contact the Gorman-Rupp Company to verify performance or part numbers.

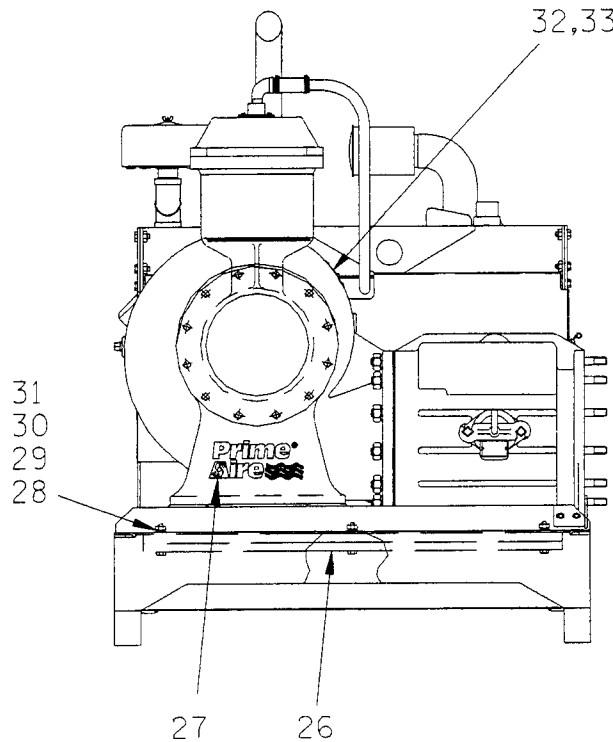
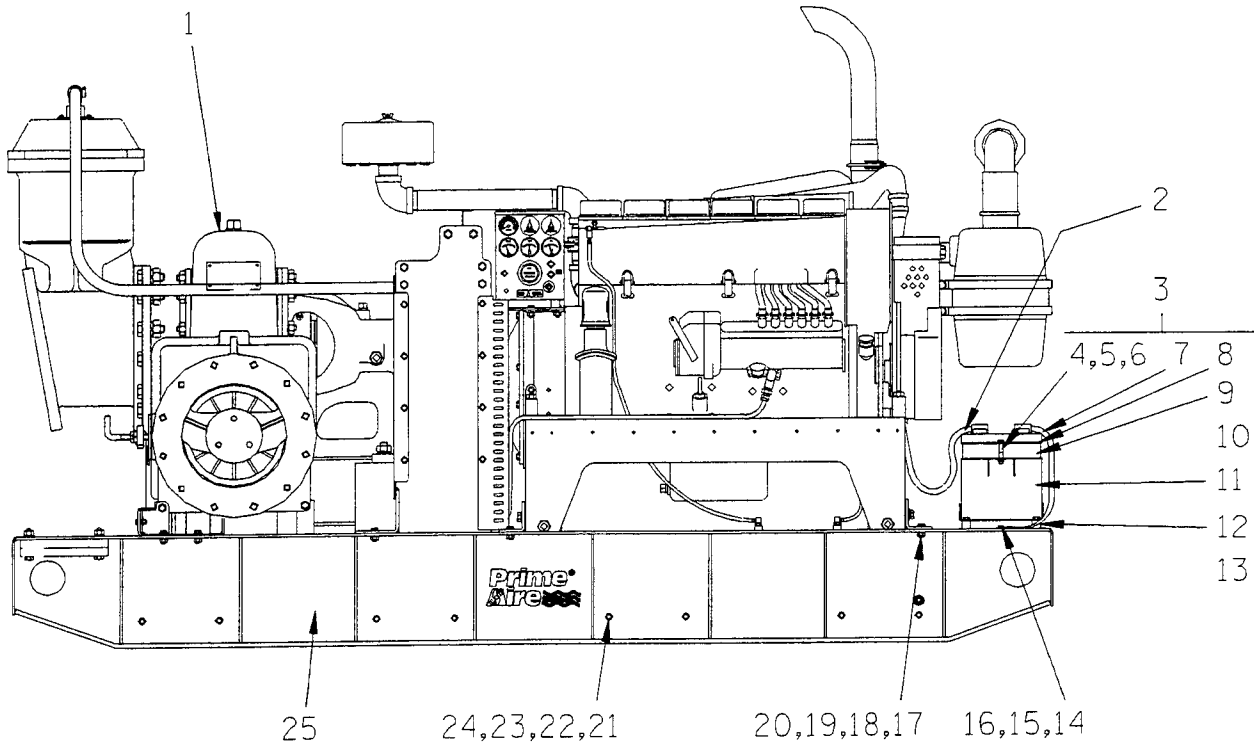


Pump speed and operating condition points must be within the continuous performance range shown on the curve.



Performance Curve – Model PA12A60-B-BF6L

**This Page Intentionally Blank**



**THE GORMAN-RUPP COMPANY • MANSFIELD, OHIO**

GORMAN-RUPP OF CANADA LIMITED • ST. THOMAS, ONTARIO, CANADA

Printed in U.S.A.

S/N 1084662N Up  
PUMP ISSUE 1

**PARTS LIST**  
**Pump Model PA12A60-B-BF6L**

If your pump serial number is followed by an "N", your pump is NOT a standard production model. Contact the Gorman-Rupp Company to verify part numbers.

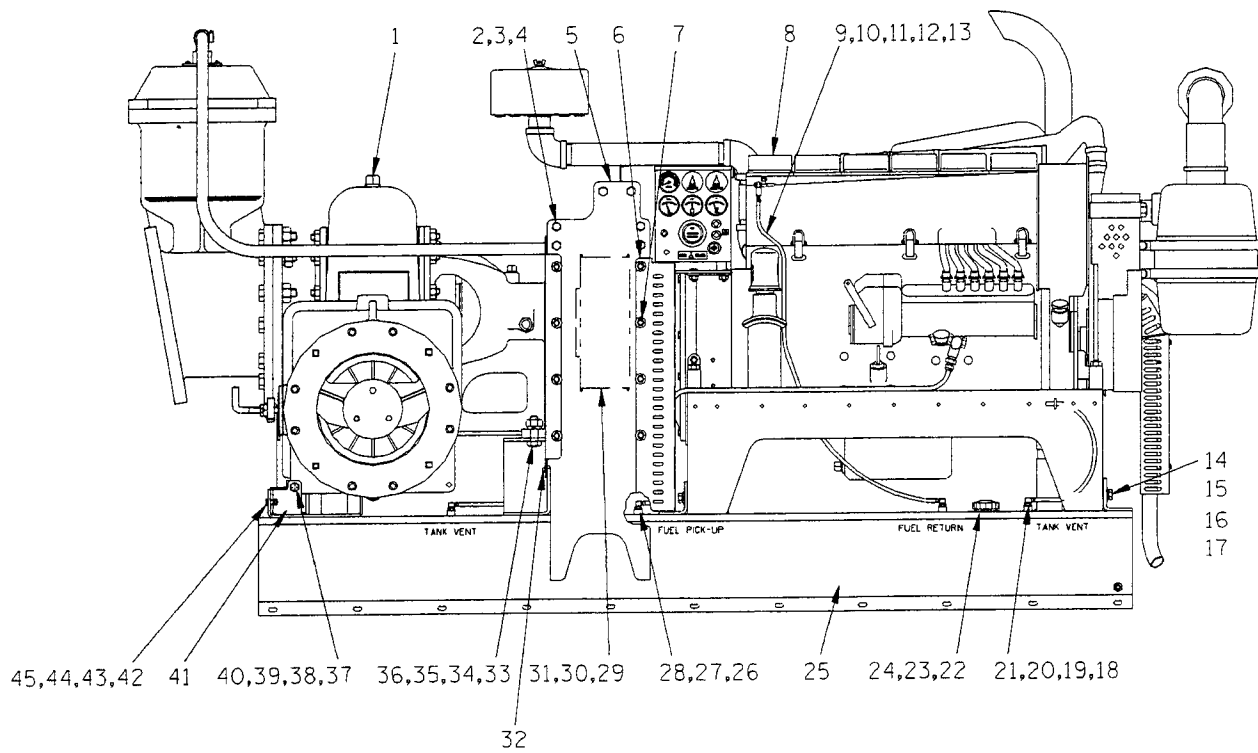
ITEM NO.	PART NAME	PART NUMBER	MAT'L CODE	QTY
1	PUMP SUB-ASSEMBLY	46133-903	---	1
2	POS BATTERY CABLE	47311-118	---	1
3	BATTERY BOX ASSEMBLY	GRP40-08C	---	1
4	-HEX HD CAPSCREW	B0607	15991	2
5	-FLAT WASHER	K06	15991	2
6	-FLANGED HEX NUT	21765-314	---	2
7	-GROUND CABLE ASSEMBLY	47311-064	---	1
8	-BATTERY BOX LID	42113-012	24150	1
9	* -12V BATTERY	29331-506	---	REF
10	-BATTERY TAG	38818-506	---	1
11	-BATTERY BOX ASSEMBLY	42431-030	24150	1
12	-STUD MOUNT	24631-006	---	4
13	-FLANGED HEX NUT	21765-314	---	8
14	HEX HD CAPSCREW	B0604	15991	1
15	HEX NUT	D06	15991	1
16	LOCKWASHER	J06	15991	1
17	HEX HD CAPSCREW	B0806	15991	11
18	FLAT WASHER	21161-501	---	11
19	LOCKWASHER	J08	15991	11
20	HEX NUT	D08	15991	11
21	HEX HD CAPSCREW	B0808	15991	16
22	FLAT WASHER	21161-501	---	32
23	LOCKWASHER	J08	15991	16
24	HEX NUT	D08	15991	16
25	SKID ASSEMBLY	41565-569	24150	1
26	COUNTERWEIGHT PLATE	33643-119	15080	2
27	PRIME AIRE DECAL	38812-078	---	3
28	HEX HD CAPSCREW	B0813	15991	6
29	HEX NUT	D08	15991	6
30	LOCKWASHER	J08	15991	6
31	FLAT WASHER	K08	15991	6
32	NAME PLATE	38818-127	13000	1
33	DRIVE SCREW	BM#04-03	17000	4
	NOT SHOWN:			
	STRAINER	46641-012	24150	1
	CABLE TIE	27111-218	---	1

\* INDICATES PARTS RECOMMENDED FOR STOCK

Above Serial Numbers Do Not Apply To Pumps Made In Canada.

CANADIAN SERIAL NO. .... AND UP

**THE GORMAN-RUPP COMPANY • MANSFIELD, OHIO**



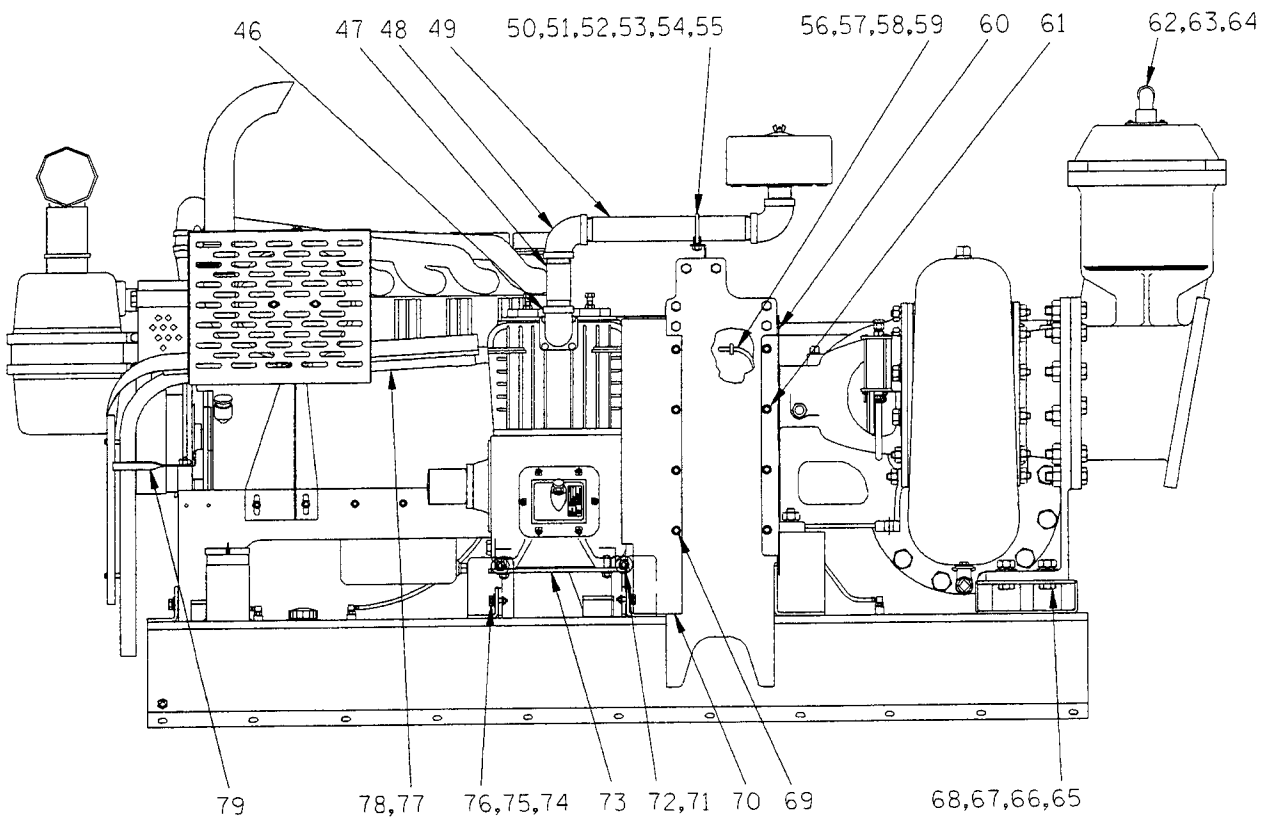


S/N 1084662N Up  
PUMP ISSUE 1

**PARTS LIST**  
**Pump Sub-Assembly**

ITEM NO.	PART NAME	PART NUMBER	MAT'L CODE	QTY	ITEM NO.	PART NAME	PART NUMBER	MAT'L CODE	QTY
1	PUMP ASSEMBLY	PA12A60-B	----	1	24	#10 TAPSCREW	21281-444	----	6
2	HEX HD CAPSCREW	B0806	15991	12	25	FUEL TANK ASSY	46711-068	----	1
3	LOCKWASHER	J08	15991	12		-FUEL CAP	29332-106	----	1
4	HEX NUT	D08	15991	12	26	FUEL PICKUP	29332-142	----	1
5	HOIST BAIL	44718-027	----	1	27	HOSE ASSY	46341-796	----	1
6	GUARD-ENGINE SIDE	34266-007	15120	1	28	MALE CONNECTOR	S1447	----	1
7	FLNGE HD CAPSCREW	21634-515	----	12	29 *	DRIVE BELT-PUMP	24154-001	----	1
8	ENGINE MOD ASSY	44311-008	----	1	30	SPROCKET	24271-001	----	1
9	FUEL LINE	11308K	----	1	31	BUSHING	24131-531	----	1
10	HOSE CLAMP	26518-641	----	2	32	FLANGE HD CAPSCREW	21634-505	----	5
11	HOSE BARB FITTING	26523-443	----	1	33	HEX HD CAPSCREW	B1211	15991	2
12	MALE CONNECTOR	26523-463	----	1	34	HEX NUT	D12	15991	2
13	REDUCER BUSHING	AP0604	15079	1	35	LOCKWASHER	J12	15991	2
14	HEX HD CAPSCREW	B0807	15991	6	36	FLAT WASHER	K12	15991	2
15	LOCKWASHER	J08	15991	6	37	HEX HD CAPSCREW	B0808	15991	1
16	SQUARE WASHER	21168-025	----	6	38	HEX NUT	D08	15991	1
17	SHIM SET	48261-045	----	1	39	LOCKWASHER	J08	15991	1
18	FUEL LINE	11308F	----	1	40	FLAT WASHER	K08	15991	1
19	HOSE CLAMP	26518-641	----	1	41	CHECK VALVE BRKT	34125-084	15080	1
20	MALE CONNECTOR	26523-463	----	1	42	HEX HD CAPSCREW	B0605	15991	2
21	REDUCER BUSHING	AP0604	15079	1	43	HEX NUT	D06	15991	2
22	FLANGE W/GSKT	29332-151	----	1	44	LOCKWASHER	J06	15991	2
23	FUEL GAUGE	29332-132	----	1	45	FLAT WASHER	K06	15991	2

\* INDICATES PARTS RECOMMENDED FOR STOCK

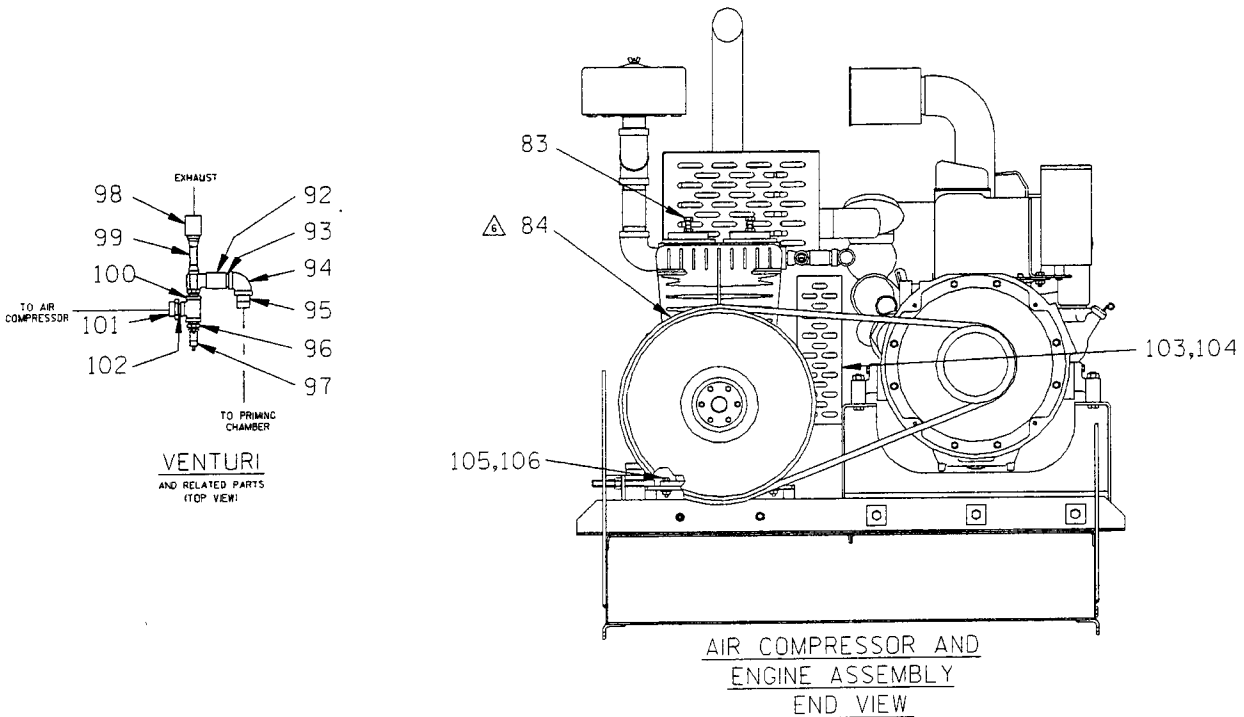
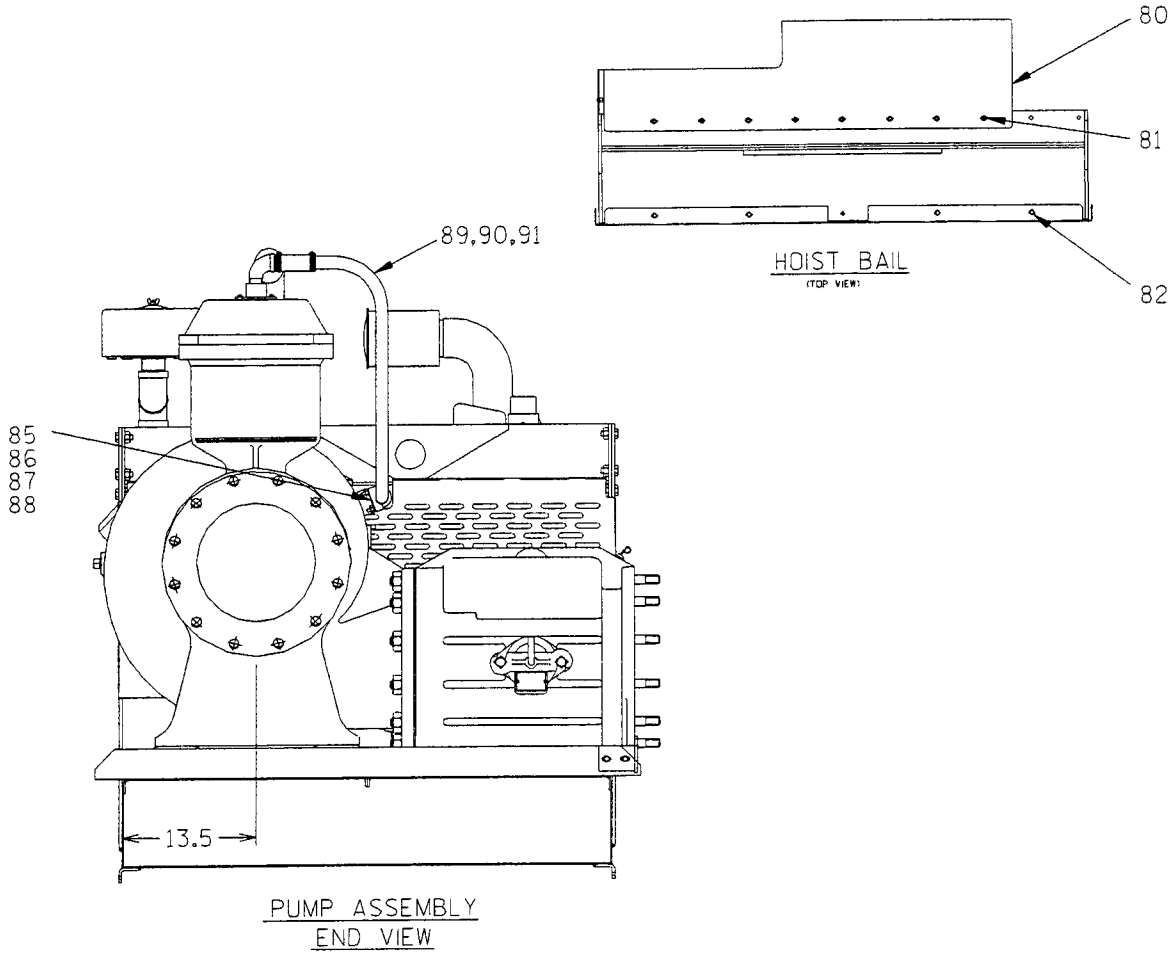


S/N 1084662N Up  
PUMP ISSUE 1

**PARTS LIST**  
**Pump Sub-Assembly**

ITEM NO.	PART NAME	PART NUMBER	MAT'L CODE	QTY	ITEM NO.	PART NAME	PART NUMBER	MAT'L CODE	QTY
46	STREET ELBOW	RS32	11999	1	63	STREET ELBOW	RS16	11999	1
47	PIPE NIPPLE	T3224	15079	1	64	REDUCER BUSHING	AP2016	11999	1
48	PIPE ELBOW	R32	11999	2	65	HEX HD CAPSCREW	B1211	15991	4
49	PIPE NIPPLE	T3272	15079	1	66	HEX NUT	D12	15991	4
50	PIPE SUPPORT BRKT	34265-032	15120	1	67	LOCKWASHER	J12	15991	4
51	MUFFLER CLAMP	29334-261	----	1	68	FLAT WASHER	K12	15991	4
52	HEX HD CAPSCREW	B0805	15991	1	69	FLANGE HD CAPSCREW	21634-515	----	8
53	HEX NUT	D08	15991	1	70	GUARD-FLYWHEEL	34518-016	15120	1
54	LOCKWASHER	J08	15991	1	71	HEX NUT	D10	15991	4
55	FLAT WASHER	K08	15991	1	72	FLAT WASHER	K10	15991	4
56	FUEL LINE	11308F	----	1	73	A/C MTG BRKT	41881-529	24150	1
57	HOSE CLAMP	26518-641	----	1	74	HEX HD CAPSCREW	B0606	15991	4
58	MALE CONNECTOR	26523-463	----	1	75	LOCKWASHER	J06	15991	4
59	REDUCER BUSHING	AP0604	15079	1	76	SQUARE WASHER	21168-023	----	4
60	GUARD-PUMP END	34266-009	15120	1	77	EXH PIPE ASSY	46241-511	----	1
61	FLANGE HD CAPSCREW	21634-515	----	8	78	MUFFLER CLAMP	29334-254	----	2
62	PIPE NIPPLE	T16	15079	1	79	EXH PIPE BRKT	34877-022	15120	1

\* INDICATES PARTS RECOMMENDED FOR STOCK

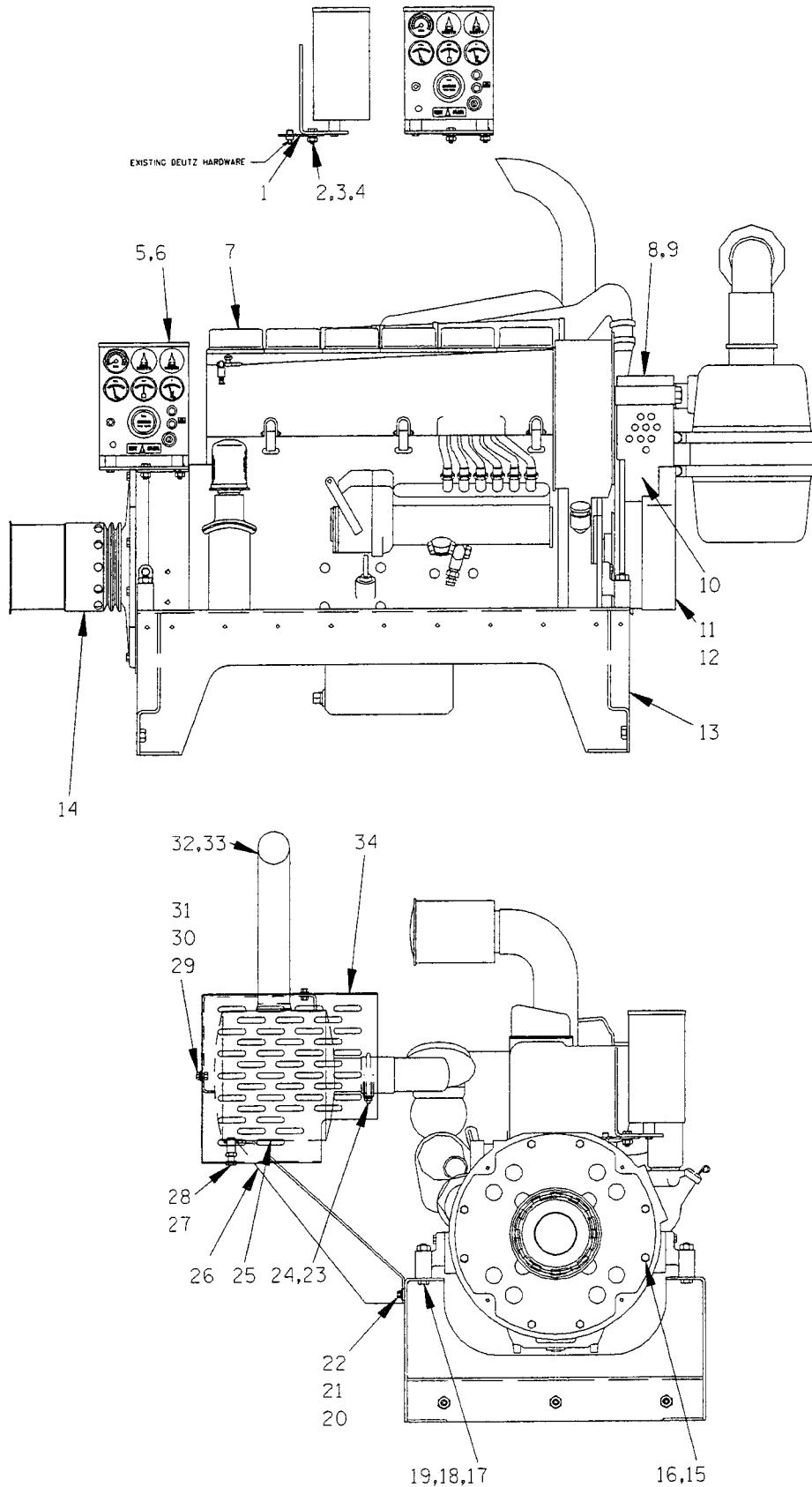


S/N 1084662N Up  
PUMP ISSUE 1

**PARTS LIST**  
**Pump Sub-Assembly**

ITEM NO.	PART NAME	PART NUMBER	MAT'L CODE	QTY	ITEM NO.	PART NAME	PART NUMBER	MAT'L CODE	QTY				
80	GUARD-TOP	34263-003	15120	1	100	PIPE TEE	U12	11999	1				
81	FLANGE HD CAPSCREW	21634-505	----	8	101	REDUCER BUSHING	AP3212	11999	1				
82	FLANGE HD CAPSCREW	21634-505	----	4	102	PIPE NIPPLE	T12	15079	1				
83	AIR COMPRESSOR ASSY	46181-901	----	1	103	BELT GUARD	34224-022	15120	1				
84 *	BELT-AIR COMP	24166-001	----	2	104	FLANGE HD CAPSCREW	21634-505	----	2				
85	AIR PIPE BRKT	33659-027	15120	1	105	HEX HD CAPSCREW	B0809	15991	4				
86	MUFFLER CLAMP	29334-252	----	1	106	LOCKWASHER	J08	15991	4				
87	FLAT WASHER	K10	15991	1	NOT SHOWN:								
88	LOCKWASHER	J10	15991	1									
89	TUBING	31912-033	15000	1						GRD WARNING STICKER	38816-063	----	2
90	HOSE CLAMP	26518-667	----	4						DECAL 6 IN	GR-06	----	2
91	HOSE	18533-309	----	1						LUBE DECAL	38816-079	----	2
92	PIPE COUPLING	AE16	15079	1						ROTATION DECAL	2613M	----	1
93	PIPE NIPPLE	T16	15079	1						WARNING DECAL	38816-175	----	1
94	PIPE ELBOW	R16	15079	1						WARNING DECAL	38816-218	----	1
95	PIPE NIPPLE	T1608	15079	1						DISCHARGE STICKER	6588BJ	----	1
96	REDUCER BUSHING	AP1204	15079	1						CAUTION DECAL	2613FJ	----	1
97	RELIEF VALVE	26662-027	----	1						INSTRUCTION LABEL	2613DK	----	1
98	PIPE COUPLING	AE16	15079	1						SUCTION STICKER	6588AG	----	1
99	VENTURI	26817-001	----	1						INSTRUCTION DECAL	38818-128	----	1

\* INDICATES PARTS RECOMMENDED FOR STOCK

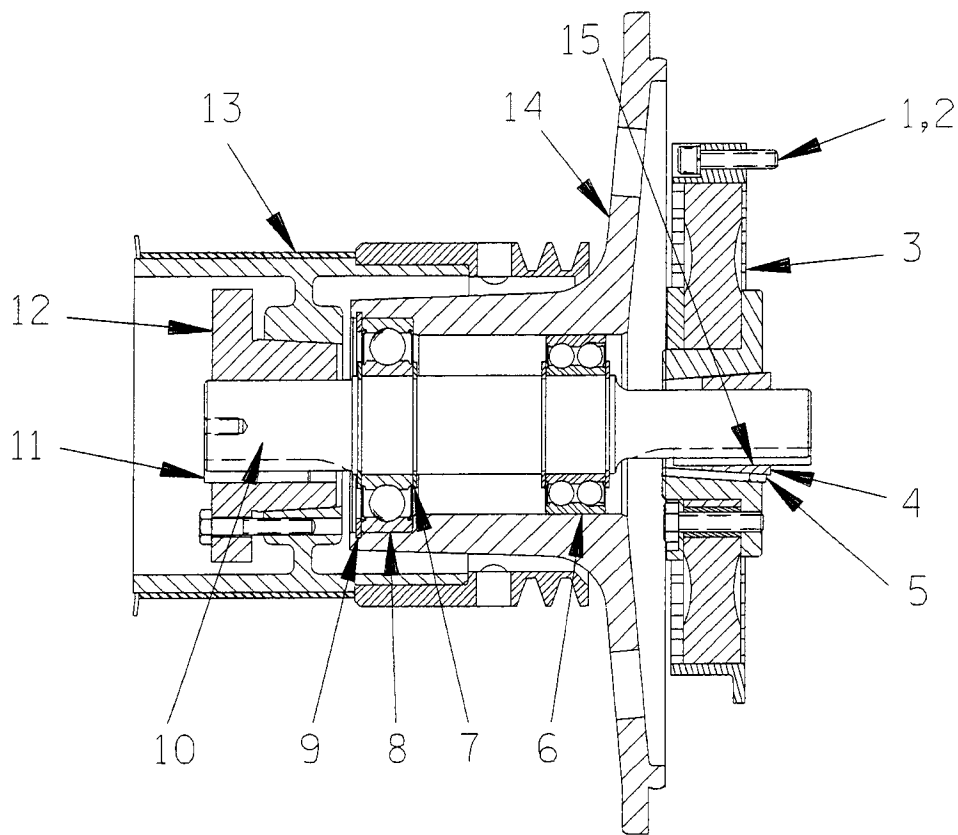


S/N 1084662N Up  
PUMP ISSUE 1

**PARTS LIST**  
**Engine Modification Assembly**

ITEM NO.	PART NAME	PART NUMBER	MAT'L CODE	QTY	ITEM NO.	PART NAME	PART NUMBER	MAT'L CODE	QTY
1	CTRL PANEL MTG PLT	33273-158	15120	1	18	LOCKWASHER	J08	15991	4
2	HEX HD CAPSCREW	B0604	15991	2	19	HEX NUT	D08	15991	4
3	LOCK WASHER	J06	15991	2	20	HEX HD CAPSCREW	B0404	15991	2
4	HEX NUT	D06	15991	2	21	LOCKWASHER	J04	15991	4
5	CAUTION DECAL	2613FJ	----	1	22	FLAT WASHER	K04	15991	2
6	WARNING DECAL	2613FE	----	1	23	MUFFLER CLAMP	29334-265	----	1
7	DEUTZ BF6L ENGINE	29217-101	----	1	24	MANIFOLD PIPE ASSY	46281-005	24150	1
8	ALT FAN GUARD	33641-112	15080	1	25	MUFFLER ASSY	46211-027	24150	1
9	POP RIVET	21122-153	----	4	26	SUPPORT BRKT ASSY	41824-009	24150	1
10	V-BELT GUARD ASSY	29277-141	----	1	27	HEX HD CAPSCREW	B0807	15991	3
11	V-BELT GUARD	34874-044	15080	1	28	HEX JAM NUT	AT08	15991	3
12	POP RIVET	21122-153	----	4	29	HEX HD CAPSCREW	B0603	15991	3
13	PEDESTAL MTG BRKT	41414-012	----	1	30	LOCKWASHER	J06	15991	1
14	ENGINE DRIVE ASSY	44162-152	----	1	31	FLAT WASHER	K06	15991	1
15	HEX HD CAPSCREW	22645-164	----	8	32	MUFFLER CLAMP	29334-265	----	1
16	LOCKWASHER	21171-511	----	8	33	EXHAUST PIPE	31911-004	15000	1
17	HEX HD CAPSCREW	B0814	15991	4	34	MUFFLER GRD ASSY	42331-045	24150	1

\* INDICATES PARTS RECOMMENDED FOR STOCK



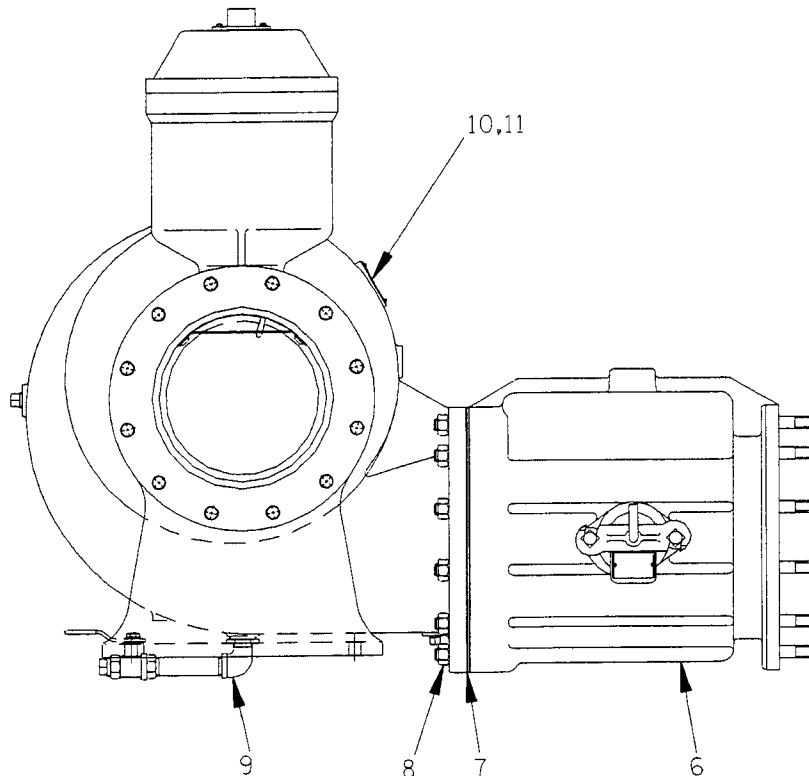
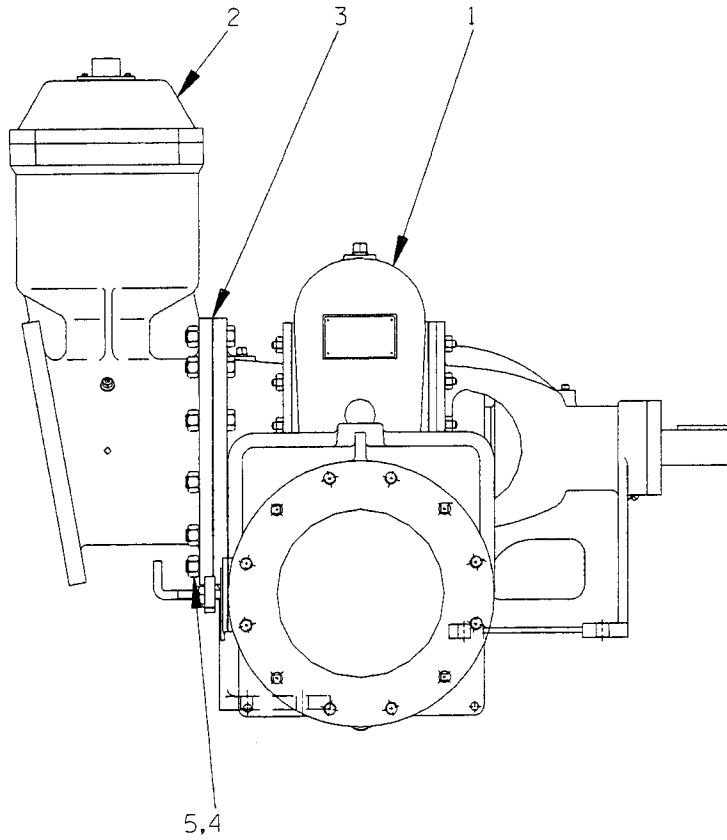


S/N 1084662N Up  
PUMP ISSUE 1

**PARTS LIST**  
**Engine Drive Assembly**

ITEM NO.	PART NAME	PART NUMBER	MAT'L CODE	QTY
1	SOCKET HEAD CAPSCREW	22644-220	---	8
2	LOCKWASHER	21171-536	---	8
3	* COUPLING ASSY	44165-014	---	1
4	* TAPERLOCK BUSHING	24131-495	---	1
5	ALLEN HD SETSCREW	GA0602	15990	2
6	* BALL BEARING	23431-012	---	1
7	RETAINING RING	S215	---	4
8	* BALL BEARING	23282-012	---	1
9	RETAINING RING	24121-075	---	1
10	OUTPUT SHAFT	38512-051	1706H	1
11	* OUTPUT SHAFT KEY (DRIVE END)	N0807	15990	1
12	TAPERLOCK BUSHING	24131-526	---	1
13	DRIVE SPROCKET	44162-901	---	1
14	BEARING HOUSING	38251-001	11010	1
15	* OUTPUT SHAFT KEY (DRIVEN END)	N0612	15990	1

\* INDICATES PARTS RECOMMENDED FOR STOCK



**THE GORMAN-RUPP COMPANY • MANSFIELD, OHIO**

GORMAN-RUPP OF CANADA LIMITED • ST. THOMAS, ONTARIO, CANADA

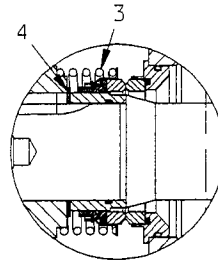
Printed in U.S.A.

S/N 1084662N Up  
PUMP ISSUE 1

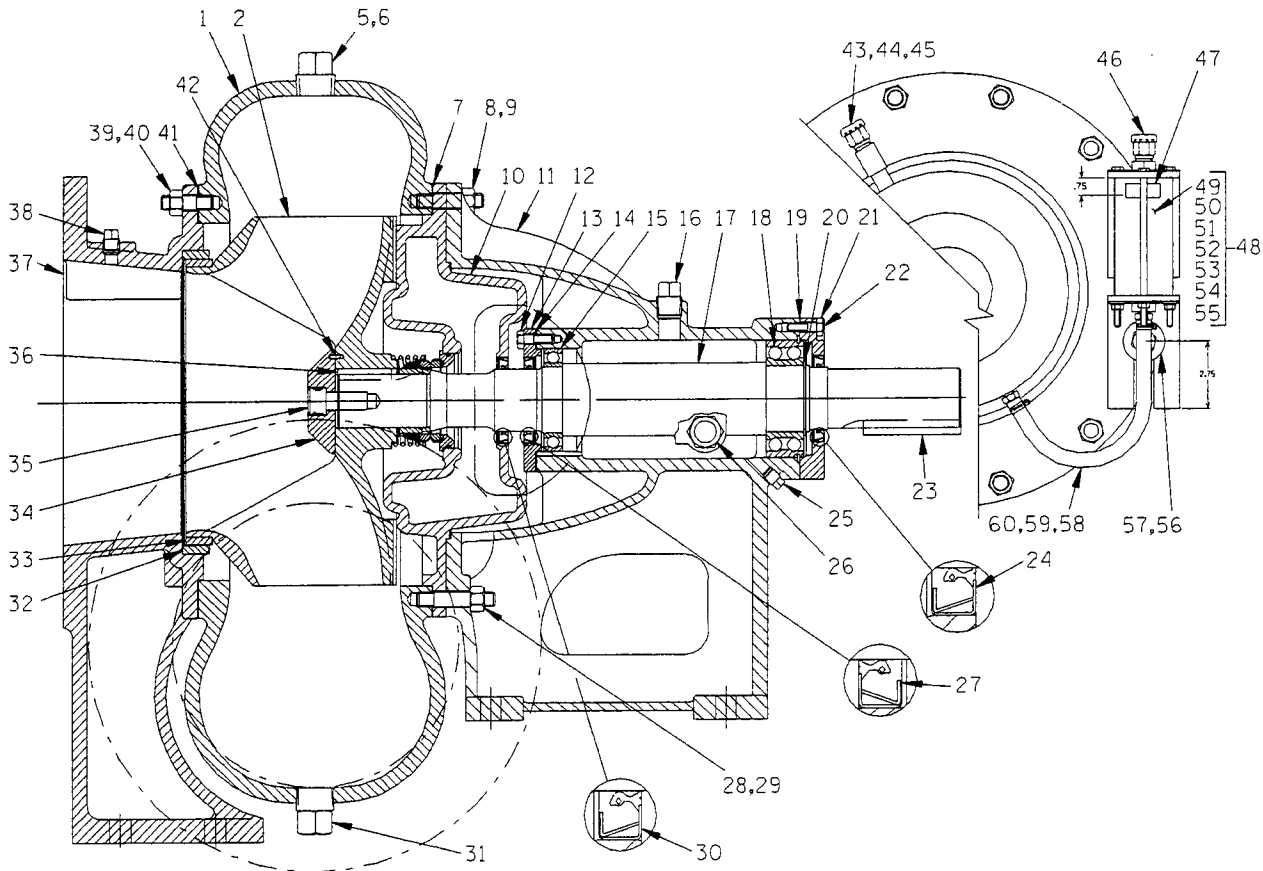
**PARTS LIST**  
**PA12A60-B Pump Model Assembly**

ITEM NO.	PART NAME	PART NUMBER	MAT'L CODE	QTY
1	PUMP ASSEMBLY	612M60-B	---	1
2	PRIMING CHAMBER ASSY	46112-701	---	1
3	* FLANGE GASKET	4991G	18000	1
4	HEX HEAD CAPSCREW	B1412	15991	12
5	HEX NUT	D14	15991	12
6	CHECK VALVE ASSY	46421-057	---	1
7	* FLANGE GASKET	4991G	18000	1
8	HEX NUT	D14	15991	12
9	DRAIN VALVE ASSY	46346-262	---	1
10	NAME PLATE	38818-127	13000	1
11	DRIVE SCREW	BM#04-03	17000	4
NOT SHOWN:				
	STRAINER	46641-012	24150	1

\* INDICATES PARTS RECOMMENDED FOR STOCK



SEAL AREA DETAIL

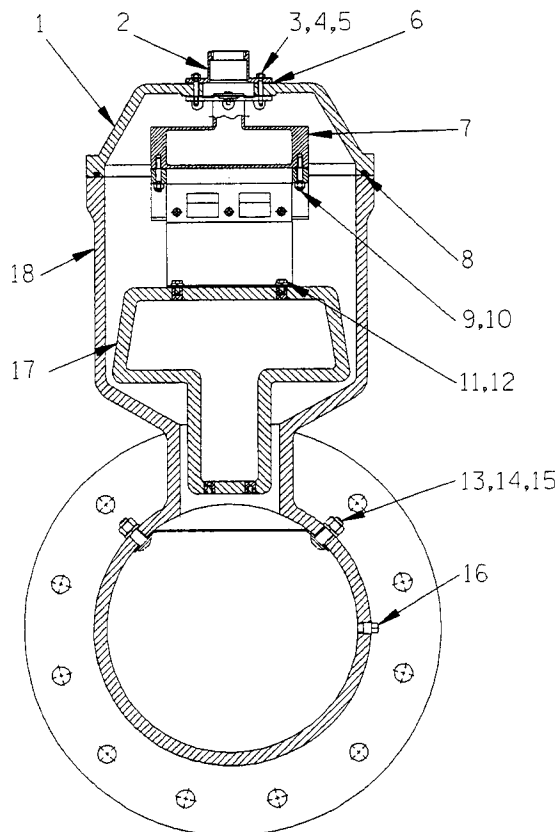
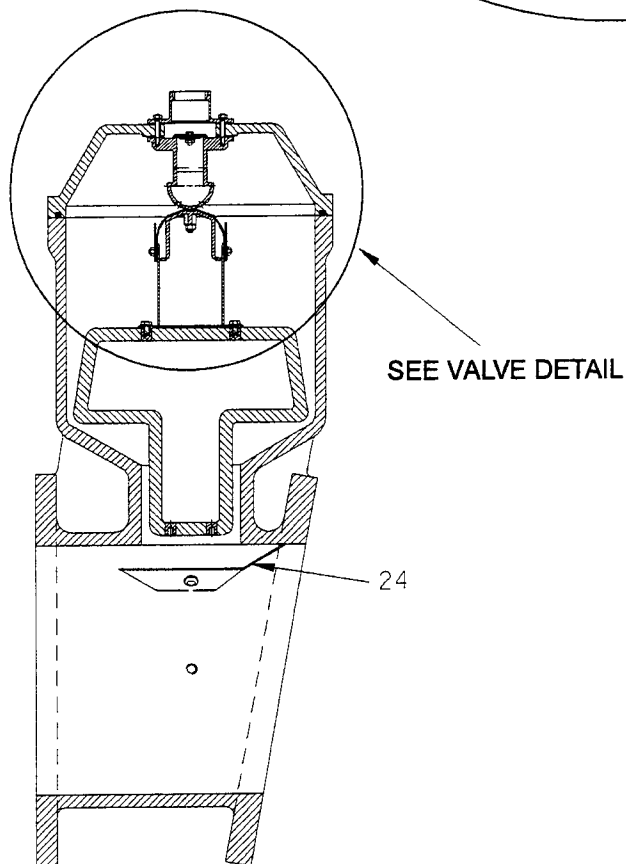
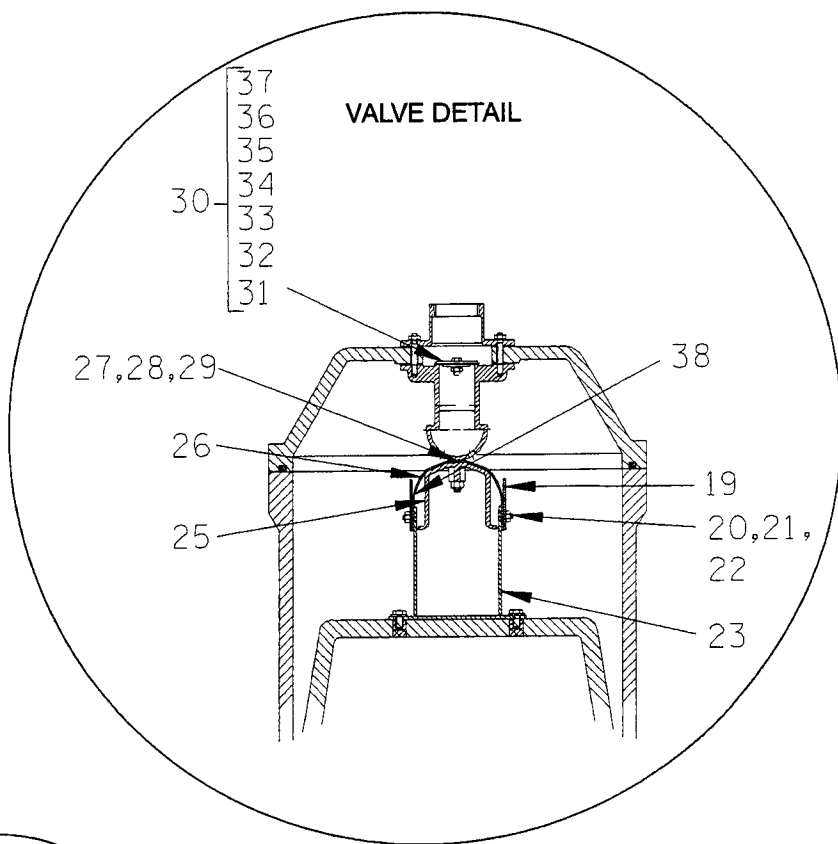


S/N 1084662N Up  
PUMP ISSUE 1

**PARTS LIST**  
**612M60-B Pump Model Assembly**

ITEM NO.	PART NAME	PART NUMBER	MAT'L CODE	QTY	ITEM NO.	PART NAME	PART NUMBER	MAT'L CODE	QTY
1	VOLUTE CASING	38219-305	10010	1	34 *	IMPELLER WASHER	31167-022	15030	1
2	IMPELLER	38621-729	11010	1	35	SOC HD CAPSCREW	BD1206	15990	1
3 *	MECHANICAL SEAL	46512-109	----	1	36 *	KEY	N0809	15990	1
4 *	SHIM SET	48261-033	----	1	37	SUCTION HEAD	4180	10010	1
5	PIPE PLUG	P12	15079	2	38	PIPE PLUG	P06	15079	1
6	PIPE PLUG	P06	15079	1	39	STUD	C1009	15991	12
7 *	VOLUTE CASING GASKET	38674-434	18000	1	40	HEX NUT	D10	15991	12
8	STUD	C1011	15991	10	41 *	SUCT HD GASKET	4180G	18000	1
9	HEX NUT	D10	15991	10	42	AIR VENT	S1703	----	1
10	SEAL PLATE	38272-713	10010	1	43	PIPE NIPPLE	T0608	15079	1
11	PEDESTAL	38257-518	10010	1	44	PIPE COUPLING	AE06	15079	1
12	HEX HD CAPSCREW	B0605	15991	6	45	AIR VENT	S1703	----	1
13	INBOARD BEARING CAP	38322-425	10010	1	46	OIL LEVEL DECAL	38816-123	----	1
14 *	BEARING CAP GASKET	4184G	18000	1	47	SIGHT GAUGE ASSY	46353-020	----	1
15	INBOARD BALL BEARING	23231-515	----	1	48	-END CAP	26846-501	----	2
16	VENTED PIPE PLUG	38649-009	15079	1	49	-END CAP GASKET	38681-204	20000	2
17 *	IMPELLER SHAFT	38512-521	17040	1	50	-SIGHT CHAMBER	26846-502	----	1
18 *	OUTBRD BALL BEARING	23422-019	----	1	51	-HEX HD CAPSCREW	B0426	15991	3
19 *	BEARING CAP GASKET	38683-472	18000	1	52	-LOCKWASHER	J04	15991	3
20	RETAINING RING	24124-057	----	1	53	-HEX NUT	D04	15991	3
21	BEARING CAP	38322-426	10010	1	54	-BRACKET	34144-028	15990	2
22	HEX HD CAPSCREW	B0605	15991	4	55	FLAT WASHER	K10	15991	2
23 *	SHAFT KEY	N1016	15990	1	56	LOCKWASHER	J10	15991	2
24 *	OIL SEAL	25258-845	----	1	57	MALE CONNECTOR	26523-409	----	2
25	PIPE PLUG	P04	15079	1	58	HOSE 3/8 X 11 LG.	18513-054	----	1
26	SIGHT GAUGE	S1471	----	2	59	HOSE CLAMP	26518-642	----	2
27 *	OIL SEAL	25258-845	----	1					
28	STUD	C1013	15991	2	NOT SHOWN:				
29	HEX NUT	D10	15991	2		RD HD MACH SCREW	X0405	15991	2
30 *	OIL SEAL	25258-845	----	1		LOCKWASHER	J04	15991	2
31	PIPE PLUG	P24	10009	1		STRAINER	46641-012	24150	1
32 *	IMPELLER WEAR RING	4181A	14000	1		NAME PLATE	2613D	13990	1
33 *	SUCT HD WEAR RING	4182A	14000	1		DRIVE SCREW	BM#04-03	17000	4

\* INDICATES PARTS RECOMMENDED FOR STOCK

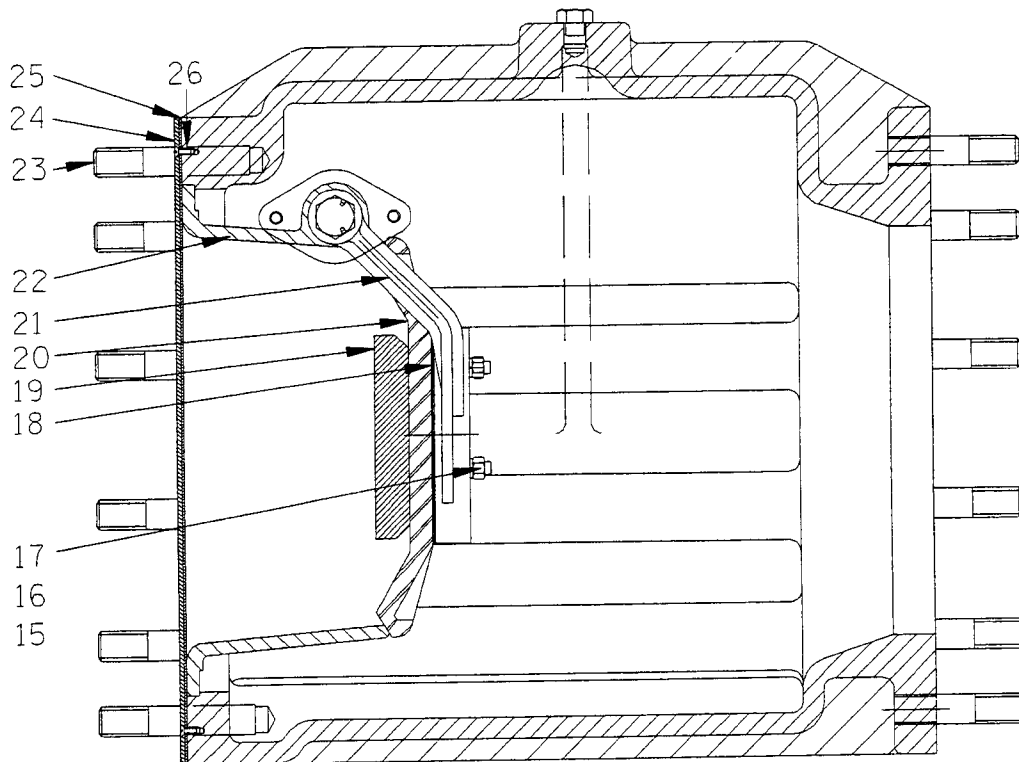
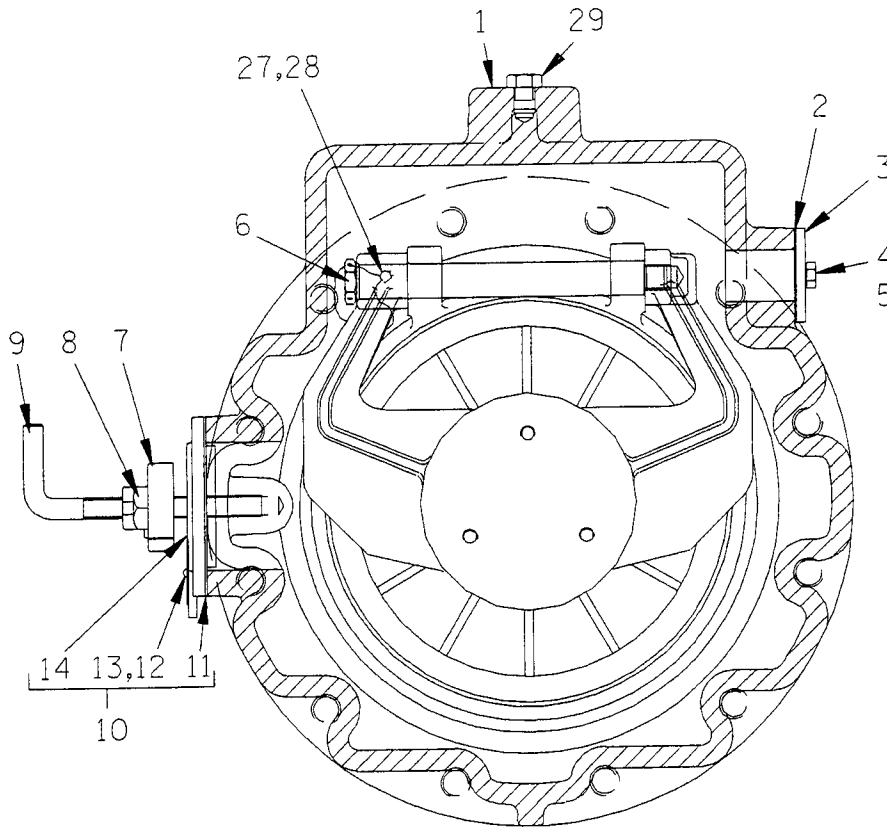


S/N 1084662N Up  
PUMP ISSUE 1

**PARTS LIST**  
**46112-702 Peeler Type Priming Valve**

ITEM NO.	PART NAME	PART NUMBER	MAT'L CODE	QTY	ITEM NO.	PART NAME	PART NUMBER	MAT'L CODE	QTY
1	PRIMING CHAMBER LID	38346-613	13000	1	23	VLV STRAP BRKT ASSY	41881-523	2415X	1
2	PEELER VALVE NECK	38349-405	14000	1	24	INDUCTOR GUARD	34872-010	17000	1
3	LOCKWASHER	J#10	17000	4	25	CLAMP PLATE	38349-406	14000	1
4	HEX NUT	D#10	17000	4	26	VALVE STRAP	33276-041	19000	1
5	STUD	21332-038	---	4	27	ADJ SHIM (IF REQ'D)	1868A	17000	2
6 *	NECK GASKET	38683-266	19020	1	28	ADJ SHIM (IF REQ'D)	1868B	17000	2
7	VALVE BODY	38343-014	14000	1	29	ADJ SHIM (IF REQ'D)	1868C	17000	2
8 *	GASKET STRIP-42" LG	18515-031	---	1	30	CHECK VALVE ASSY	46411-112	---	1
9	STUD	C0406 1/2	17000	2	31 *	-CHECK VALVE	38671-413	19020	1
10	HEX LOCK NUT	BC04	17000	2	32	-LOCKWASHER	J#10	17000	1
11	HEX HD CAPSCREW	B0402	17000	4	33	-HEX NUT	D#10	17000	1
12	LOCKWASHER	J04	17000	4	34	-SMALL VALVE WEIGHT	21161-810	---	1
13	BUTTON HD CAPSCREW	CM0806	17000	2	35	-HEX HD CAPSCREW	B#10-02	17000	1
14	HEX NUT	D08	17000	2	36	-LARGE VALVE WEIGHT	21161-811	---	1
15	LOCKWASHER	J08	17000	2	37	-SEALING WASHER	S1590	---	1
16	PIPE PLUG	P04	15079	1	38	VALVE STRP PROTECTOR	33271-019	19000	2
17 *	PRIMING VALVE FLOAT	38349-404	19220	1	NOT SHOWN:				
18	PRIMING CHAMBER	38343-015	10010	1		HEX HD CAPSCREW	B0807	15991	4
19	GUIDE PLATE	33522-009	17000	2		FLANGE GASKET	4991G	18000	1
20	FLAT HD CAPSCREW	F#10-03	17000	6		HEX HD CAPSCREW	B1412	15991	12
21	LOCKWASHER	J#10	17000	6		HEX NUT	D14	15991	12
22	HEX NUT	D#10	17000	6					

\* INDICATES PARTS RECOMMENDED FOR STOCK



**THE GORMAN-RUPP COMPANY • MANSFIELD, OHIO**

GORMAN-RUPP OF CANADA LIMITED • ST. THOMAS, ONTARIO, CANADA

Printed in U.S.A.



S/N 1084662N Up  
PUMP ISSUE 1

**PARTS LIST**  
**46421-058 Check Valve Assembly**

ITEM NO.	PART NAME	PART NUMBER	MAT'L CODE	QTY
1	CHECK VALVE BODY	38341-809	10010	1
2	* COVER PLATE GASKET	38689-032	19000	1
3	COVER PLATE	38689-033	15080	1
4	HEX HD CAPSCREW	B0604	15991	2
5	LOCKWASHER	J06	15991	2
6	PIVOT BOLT	31811-061	15000	1
7	CLAMP BAR	38111-004	11010	1
8	MACHINE BOLT	A1014	15991	2
9	CLAMP BAR SCREW	31912-009	15000	1
10	COVER PLATE ASSY	42111-344	---	1
11	* -GASKET	50G	19210	1
12	-WARNING PLATE	38816-097	13990	1
13	-DRIVE SCREW	BM#04-03	17000	2
14	-COVER PLATE	NOT AVAILABLE	---	1
15	FLAT WASHER	KB06	17000	3
16	HEX NUT	D06	17000	3
17	STUD	C0612	17000	3
18	SHIM SET	48261-053	---	1
19	FLAP VALVE PLATE	38349-408	15080	1
20	FLAP VALVE	38349-407	19240	1
21	CHECK VALVE FLAPPER	38349-409	11010	1
22	INSERT	31578-012	11000	1
23	STUD	C1414	15991	24
24	CHECK VALVE SHIM	38683-826	15120	1
25	* CHECK VALVE GASKET	38683-827	18000	1
26	FLT HD MACHINE SCREW	Y#10-02	15991	4
27	WIRE 4.00" LG.	14964-003	---	1
28	LEAD SEAL	21188-002	---	1
29	SCREW	B1003	15991	1

## NOT SHOWN:

	PIPE PLUG	P04	15079	1
*	FLANGE GASKET	4991G	18000	1
	HEX NUT	D14	15991	24

\* INDICATES PARTS RECOMMENDED FOR STOCK

**THE GORMAN-RUPP COMPANY • MANSFIELD, OHIO**

**For U.S. and International Warranty Information,  
Please Visit [www.grpumps.com/warranty](http://www.grpumps.com/warranty)  
or call:  
U.S.: 419-755-1280  
International: +1-419-755-1352**

**For Canadian Warranty Information,  
Please Visit [www.grcanada.com/warranty](http://www.grcanada.com/warranty)  
or call:  
519-631-2870**