

AC

Use With: OM--04151  
MR--04280

PUBLICATION NUMBER  
PL--04244--02  
Pump Issue 2  
June 14, 1995  
Supersedes: OM--01871--02



**PUMP MODEL  
S2B1 575V 3P**

**MANUAL  
PART 2 of 3**

**PARTS  
LIST  
WITH  
PERFORMANCE CURVE**

**THE GORMAN-RUPP COMPANY • MANSFIELD, OHIO**

GORMAN-RUPP OF CANADA LIMITED • ST. THOMAS, ONTARIO, CANADA Printed in U.S.A.

©Copyright by the Gorman-Rupp Company

## PERFORMANCE CURVE – SECTION A

### RECORDING MODEL AND SERIAL NUMBERS

Please record the pump model and serial number in the spaces provided below and in the separate Installation/Operation Manual accompanying your pump. Your Gorman-Rupp distributor needs this information when you require parts or service.

Pump Model: \_\_\_\_\_

Serial Number: \_\_\_\_\_

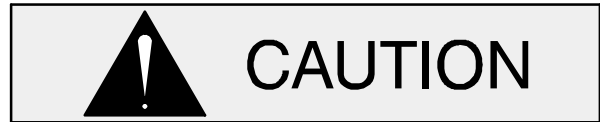
### WARRANTY INFORMATION

The pump warranty is provided as part of Gorman-Rupp's support program for customers who operate and maintain their equipment as described in this manual and other accompanying literature. Please note that should the equipment be abused or modified to change its performance beyond the original factory specifications, the warranty will become void and any claim will be denied.

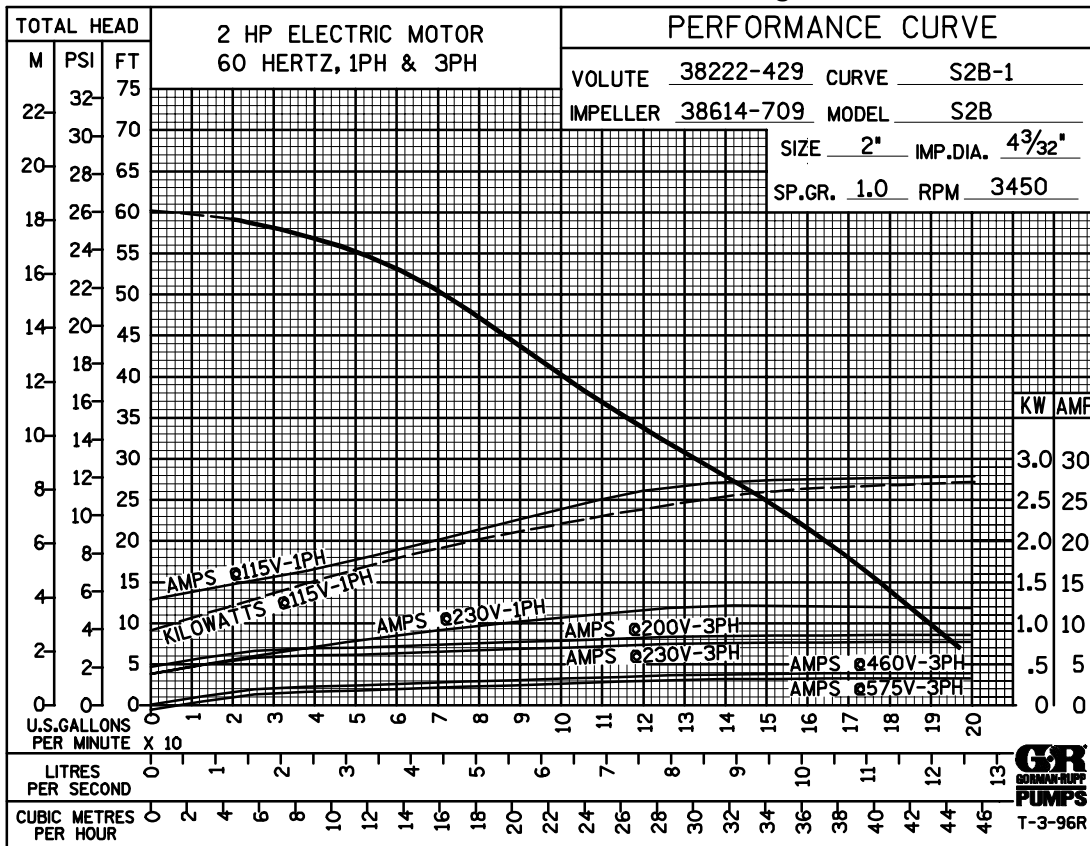
### PERFORMANCE CURVES

The performance curves on the following page are based on 70° F (21° C) clear water at sea level. Since pump installations are seldom identical, your performance may be different due to such factors as viscosity, specific gravity, elevation, temperature, and impeller trim.

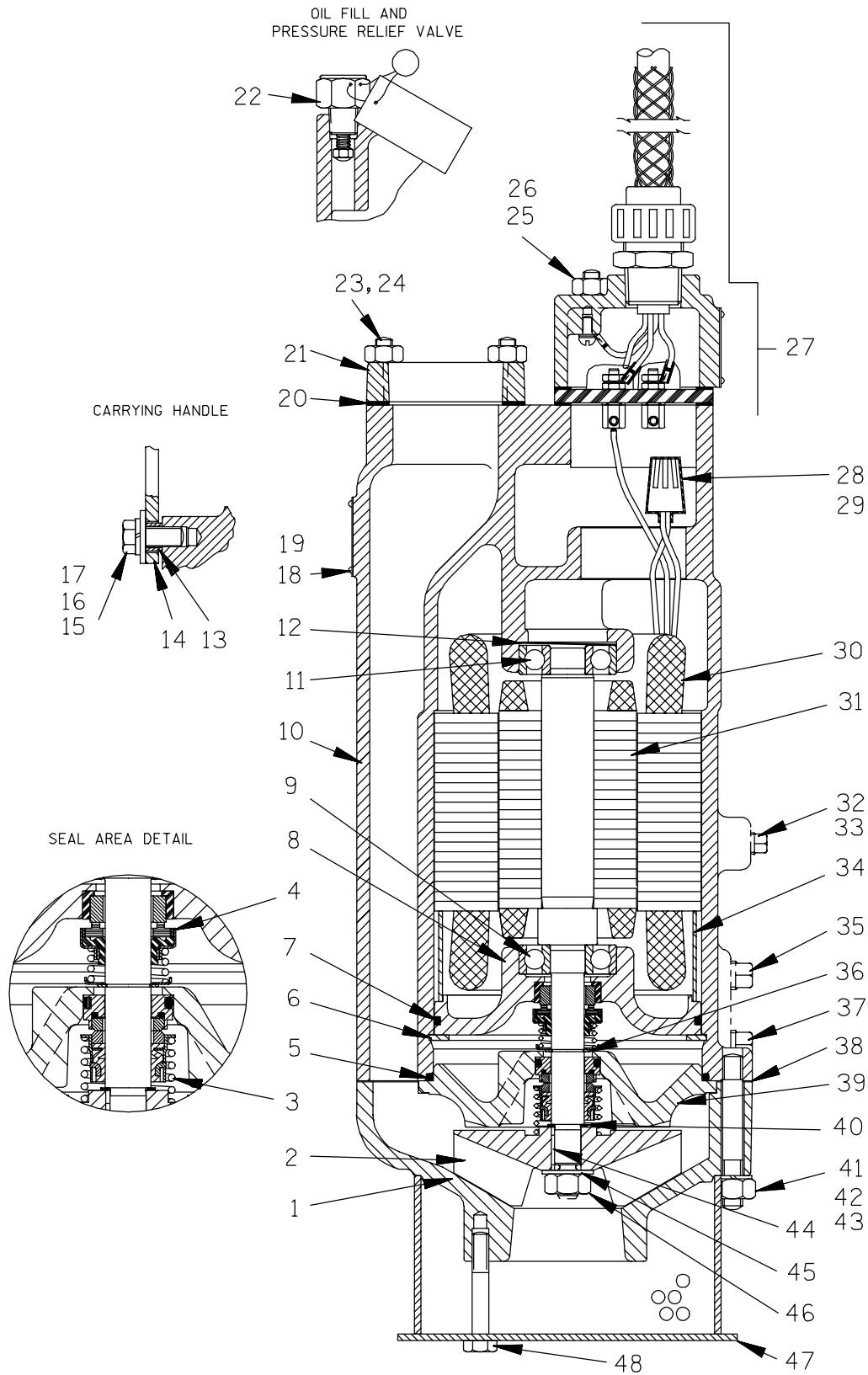
If your pump serial number is followed by an "N", your pump is **NOT** a standard production model. Contact the Gorman-Rupp Company to verify performance or part numbers.



Pump speed and operating condition points must be within the continuous performance range shown on the curve(s).



Performance Curve – Model S2B1 575V 3P



**THE GORMAN-RUPP COMPANY • MANSFIELD, OHIO**

GORMAN-RUPP OF CANADA LIMITED • ST. THOMAS, ONTARIO, CANADA

Printed in U.S.A.

1 of 4

S/N 838616 Up  
PUMP ISSUE 2

If your pump serial number is followed by an "N", your pump is **NOT** a standard production model. Contact the Gorman-Rupp Company to verify part numbers.

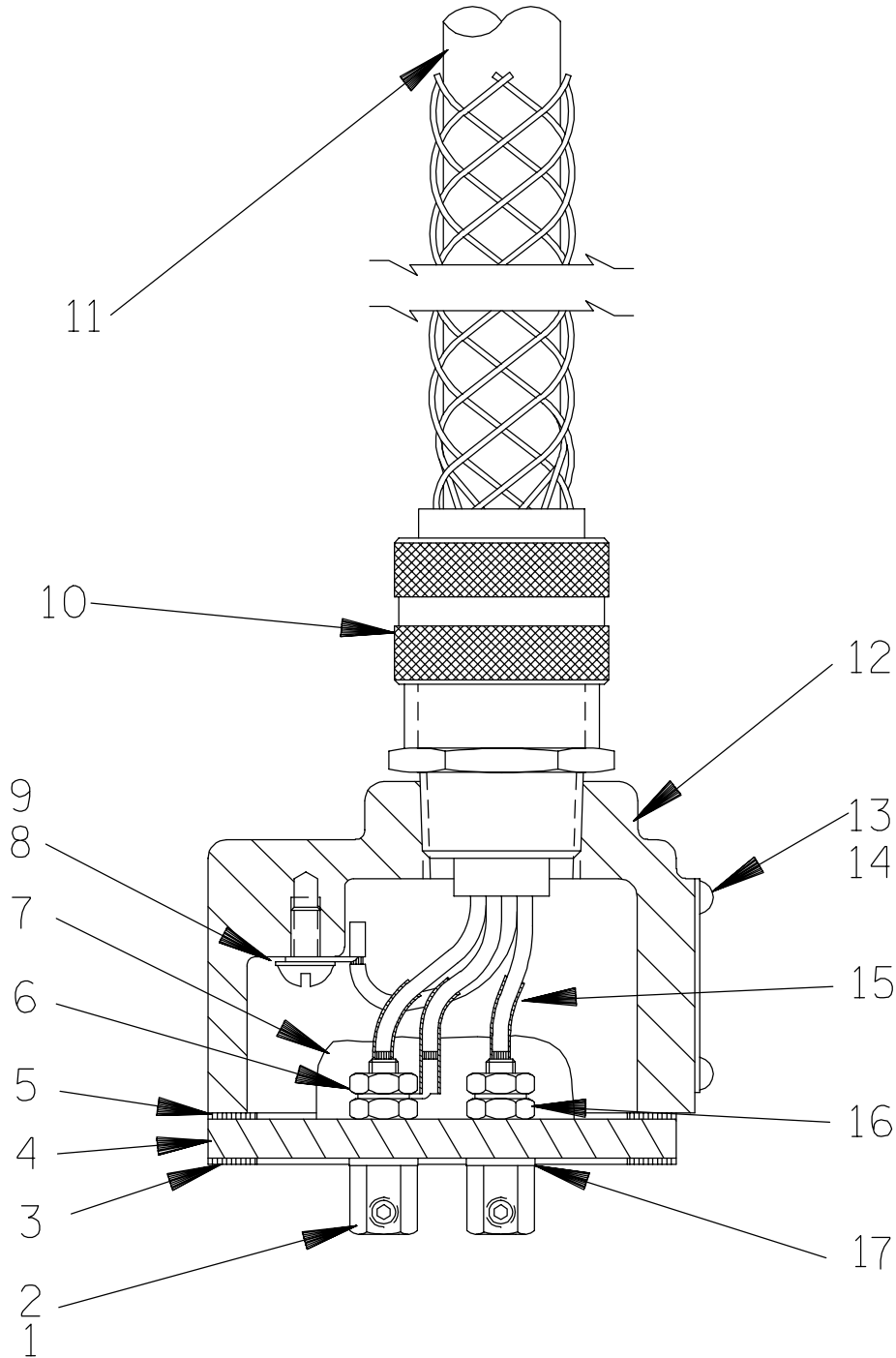
ITEM NO.	PART NAME	PART NUMBER	MAT'L CODE	QTY	ITEM NO.	PART NAME	PART NUMBER	MAT'L CODE	QTY
1	SUCTION CASING	38222-429	10010	1	34	MOTOR BUSHING	31173-018	23010	1
2 *	IMPELLER	38614-709	14160	1	35	PIPE PLUG	P04	17000	1
3 *	LOWER SEAL ASSY	46512-036	---	1	36	SEAL SNAP RING	S668	---	1
4 *	UPPER SEAL ASSY	25271-824	---	1	37	SEAL CVTY DRAIN PLUG	P04	17000	1
5 *	SEAL PLATE O-RING	25152-250	---	1	38 *	SUCT CASING GSKT	38674-807	20000	1
6	RETAINING RING	24121-077	---	1	39	SEAL PLATE	38272-830	10010	1
7 *	INTERMEDIATE O-RING	25152-248	---	1	40 *	IMP ADJ SHIM SET	669	14990	1
8	INTERMEDIATE BRACKET	38261-015	13040	1	41	STUD	C0610	17000	4
9 *	LOWER BALL BEARING	S1512	---	1	42	LOCK WASHER	J06	17000	4
10	MOTOR HOUSING	38311-016	13040	1	43	HEX NUT	D06	17000	4
11 *	UPPER BALL BEARING	S1512	---	1	44 *	IMPELLER KEY	N0202-1/2	17000	1
12	BRG SPRING WASHER	S1554	---	1	45	FLAT WASHER	21161-808	---	1
13 *	BAIL BUSHING	10194	15071	2	46	IMPELLER NUT	D06	17000	1
14	HOIST BAIL	10185A	1502V	1	47 *	STRAINER ASSY	46611-004	2415V	1
15	HEX HD CAPSCREW	B0604	15991	2	48	NYLOCK CAPSCREW	BT0508	15991	4
16	FLAT WASHER	K06	15991	2		NOT SHOWN:			
17	LOCK WASHER	J06	15991	2		CABLE TIE	27111-212	---	1
18	NAME PLATE	38814-055	17000	1		CONTROL BOX	47631-129	---	1
19	DRIVE SCREW	BM#04-03	17000	4		SUB. PUMP OIL	9568	---	1
20 *	DISCH FLANGE GSKT	10195G	20000	1		MOTOR VOLTAGE TAG	38816-128	---	1
21	DISCHARGE FLANGE	10195	13040	1		OPTIONAL:			
22 *	RELIEF VALVE ASSY	46431-608	---	1		* REPAIR GASKET SET	11000T	---	1
23	STUD	C0506	15991	4		STAGING ADAPTOR KIT	48272-002	---	1
24	HEX NUT	D05	15991	4		DISCH FLANGE	38641-032	13040	1
25	STUD	C0511	15991	4		STUD	C0505	15991	4
26	HEX NUT	D05	15991	4		ANODE PLATE ASSY	42116-001	---	1
27	TERM HSG/CABLE ASSY	47367-051	---	1		LIQUID LEVEL DEVICES:			
28	CONNECTOR	DOES NOT APPLY				- DIAPHRAGM TYPE	GRP48-03 or GRP48-061		
29 *	HEAT-SHRINK TUBE	DOES NOT APPLY				- FLOAT TYPE	27471-180	---	1
30	STATOR	47113-864	---	1		120V LIQ LVL CONTROL	47631-072	---	1
31 *	ROTOR W/SHAFT ASSY	47112-801	---	1					
32	ALLEN HD SETSCREW	GA0501-1/4	15990	1					
33	PIPE PLUG	P02	17000	1					

\* INDICATES PARTS RECOMMENDED FOR STOCK

Above Serial Numbers Do Not Apply To Pumps Made In Canada.

CANADIAN SERIAL NO. .... AND UP

**THE GORMAN-RUPP COMPANY • MANSFIELD, OHIO**



**THE GORMAN-RUPP COMPANY • MANSFIELD, OHIO**

GORMAN-RUPP OF CANADA LIMITED • ST. THOMAS, ONTARIO, CANADA

Printed in U.S.A.

S/N 838616 Up  
PUMP ISSUE 2

### Terminal Housing

If your pump serial number is followed by an "N", your pump is **NOT** a standard production model. Contact the Gorman-Rupp Company to verify part numbers.

ITEM NO.	PART NAME	PART NUMBER	MAT'L CODE	QTY
1	TERMINAL	11181	14100	3
2	ALLEN HD SETSCREW	GA#10-01S	15991	3
3	* LOWER FLANGE GASKET	10195G	20000	1
4	TERMINAL PLATE	38713-007	23010	1
5	* UPPER FLANGE GASKET	10195G	20000	1
6	HEX NUT	D#10	14990	3
7	1 OZ RTV SEALANT	18771-106	---	1
8	ROUND HEAD MACHINE SCREW	X#10-01 1/2	14990	1
9	T TYPE LOCK WASHER	AK#10	15991	1
10	CABLE GRIP	S1553	---	1
11	* CABLE ASSEMBLY	10551A	---	1
12	TERMINAL HOUSING	38381-224	13040	1
13	DRIVE SCREW	BM#04-03	17000	4
14	INFORMATION PLATE	38816-047	17990	1
15	* HEAT-SHRINK TUBE	31411-203	19530	3
16	HEX NUT	D#10	14990	3
17	* DYNA-SEAL WASHER	S1590	---	3
OPTIONAL:				
	HEAT SHRINK TERMINAL KIT	48315-008	---	1

\* INDICATES PARTS RECOMMENDED FOR STOCK

**THE GORMAN-RUPP COMPANY • MANSFIELD, OHIO**

GORMAN-RUPP OF CANADA LIMITED • ST. THOMAS, ONTARIO, CANADA Printed in U.S.A.

**For U.S. and International Warranty Information,  
Please Visit [www.grpumps.com/warranty](http://www.grpumps.com/warranty)  
or call:  
U.S.: 419-755-1280  
International: +1-419-755-1352**

**For Canadian Warranty Information,  
Please Visit [www.grcanada.com/warranty](http://www.grcanada.com/warranty)  
or call:  
519-631-2870**