

ACS

Use With: OM-04151  
MR-05398

PUBLICATION NUMBER  
PL-04213-03  
July 10, 2002  
Rev. A 12-17-12



**PUMP MODEL**  
**S4G1-E30 460/575/3**

**MANUAL**  
**PART 2 of 3**

**PARTS**  
**LIST**  
**WITH**  
**PERFORMANCE CURVE**

**THE GORMAN-RUPP COMPANY • MANSFIELD, OHIO**

[www.grpumps.com](http://www.grpumps.com)

GORMAN-RUPP OF CANADA LIMITED • ST. THOMAS, ONTARIO, CANADA Printed in U.S.A.

©2002 The Gorman-Rupp Company

Register your new  
Gorman-Rupp pump online at  
**[www.grpumps.com](http://www.grpumps.com)**

Valid serial number and e-mail address required.

**RECORD YOUR PUMP MODEL AND SERIAL NUMBER**

Please record your pump model and serial number in the spaces provided below. Your Gorman-Rupp distributor needs this information when you require parts or service.

Pump Model: \_\_\_\_\_

Serial Number: \_\_\_\_\_

## PERFORMANCE CURVE – SECTION A

### RECORDING MODEL AND SERIAL NUMBERS

Please record the pump model and serial number in the spaces provided below and in the separate Installation/Operation Manual accompanying your pump. Your Gorman-Rupp distributor needs this information when you require parts or service.

Pump Model: \_\_\_\_\_

Serial Number: \_\_\_\_\_

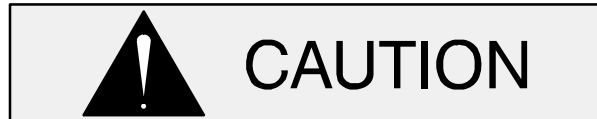
### WARRANTY INFORMATION

The pump warranty is provided as part of Gorman-Rupp's support program for customers who operate and maintain their equipment as described in this manual and other accompanying literature. Please note that should the equipment be abused or modified to change its performance beyond the original factory specifications, the warranty will become void and any claim will be denied.

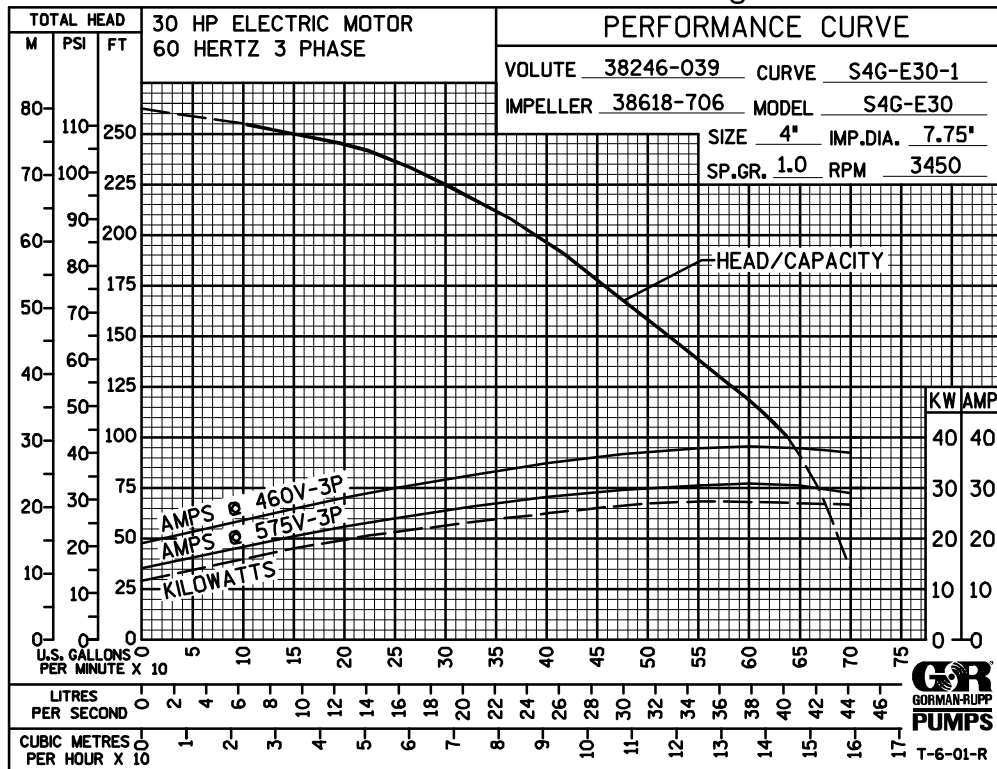
### PERFORMANCE CURVE

The performance curve below is based on 70 °F (21 °C) clear water at sea level. Since pump installations are seldom identical, your performance may be different due to such factors as viscosity, specific gravity, elevation, temperature, and impeller trim.

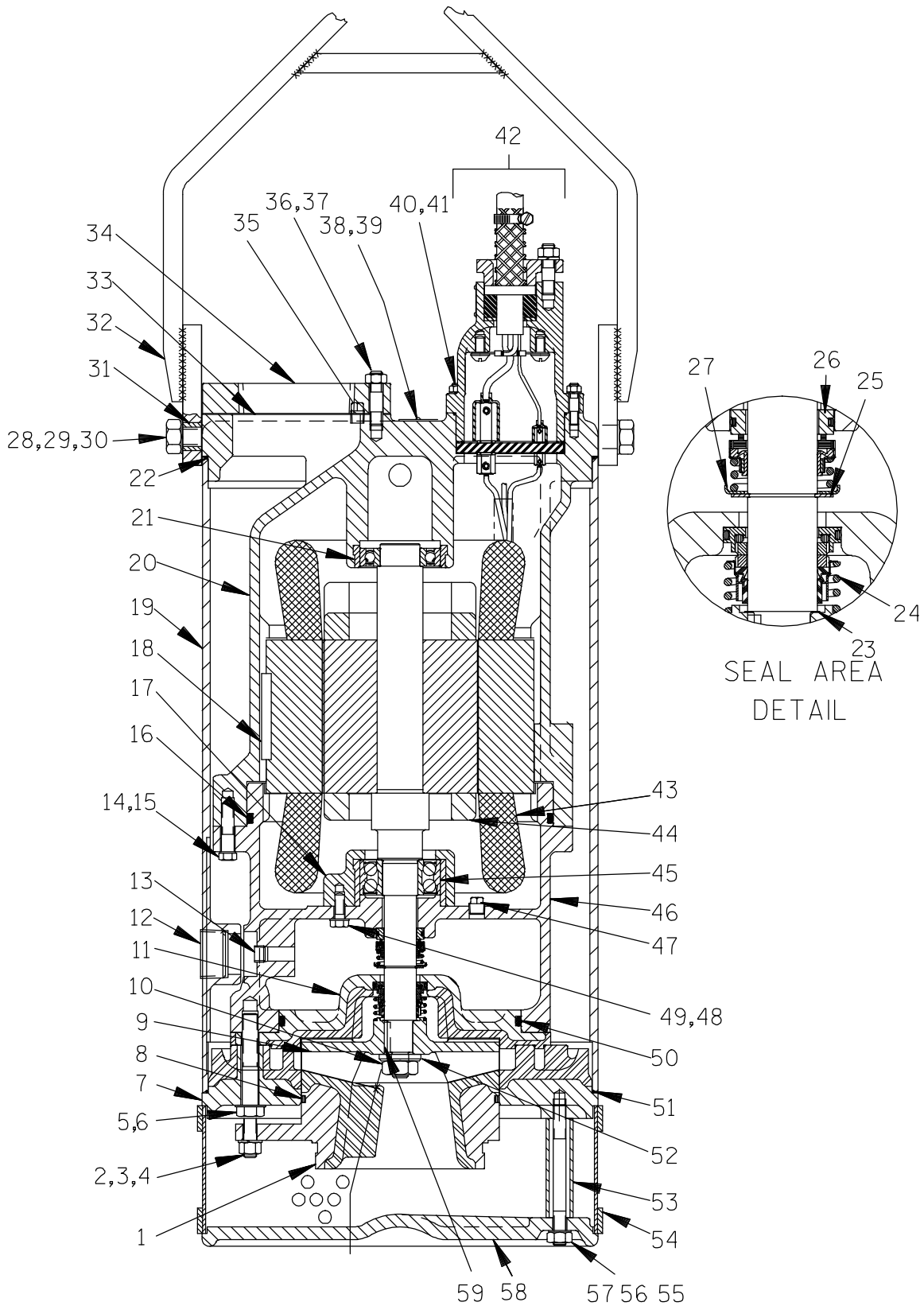
If your pump serial number is followed by an "N", your pump is **NOT** a standard production model. Contact the Gorman-Rupp Company to verify performance or part numbers.



Pump speed and operating condition points must be within the continuous performance range shown on the curve(s).



**Performance Curve – Model S4G1-E30 460/575/3**



**THE GORMAN-RUPP COMPANY • MANSFIELD, OHIO**

GORMAN-RUPP OF CANADA LIMITED • ST. THOMAS, ONTARIO, CANADA Printed in U.S.A.

July 10, 2002

©2002 The Gorman-Rupp Company

1 of 4

Page 150.4 G4

# S4G1-E30 460/575/3

ACS

S/N 1264524 UP

## PUMP ISSUE 3

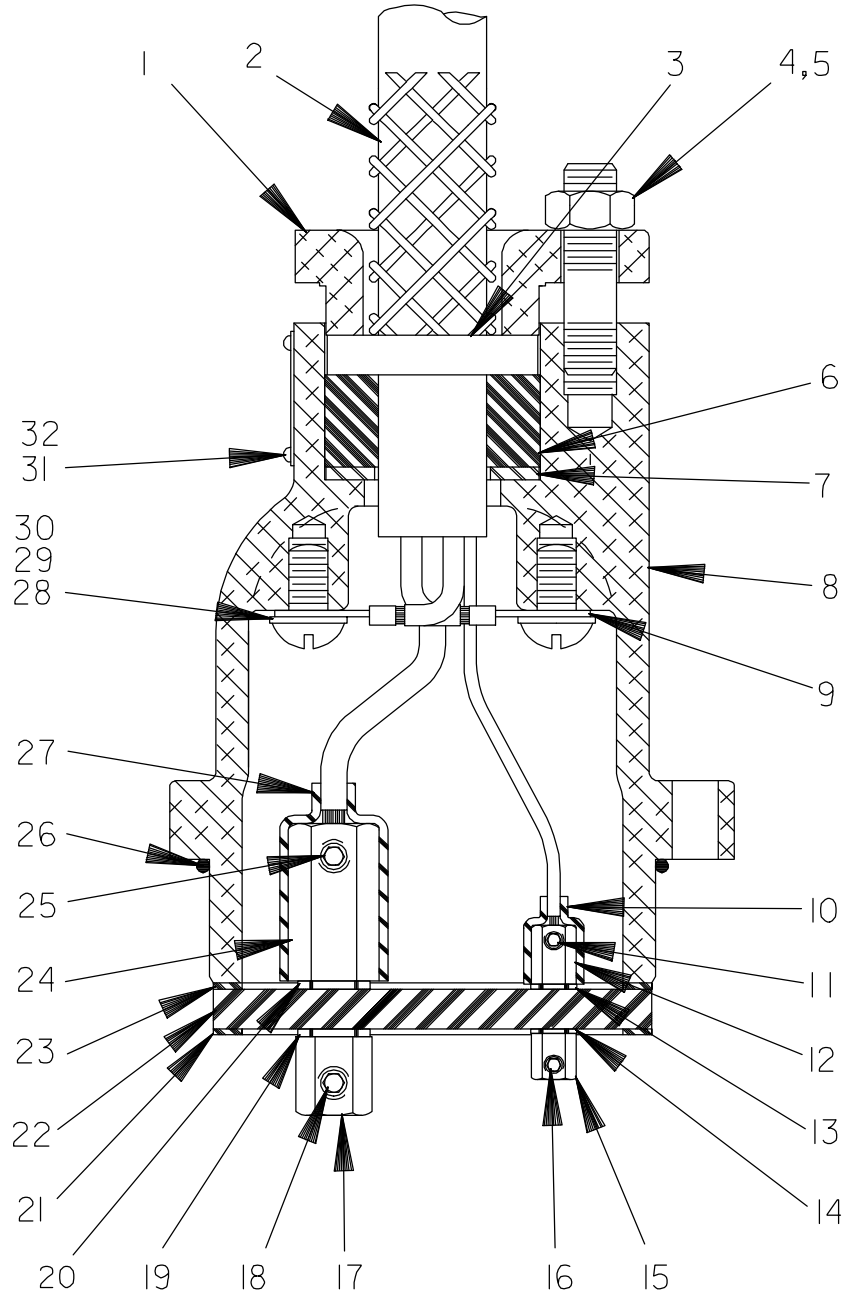
If your pump serial number is followed by an "N", your pump is NOT a standard production model. Contact the Gorman-Rupp Company to verify part numbers.

ITEM NO.	PART NAME	PART NUMBER	MAT'L CODE	QTY	ITEM NO.	PART NAME	PART NUMBER	MAT'L CODE	QTY
1	SUCTION HEAD	38246-039	24010	1	43 *	STATOR			
2	THREADED ROD	31345-087	17000	6		-460/3	47113-050	----	1
3	HEX NUT	D08	17000	12		-575/3	47113-051	----	1
4	LOCK WASHER	J08	17000	6	44	ROTOR & SHAFT ASSY	47112-031	----	1
5	HEX HD CAPSCREW	B1015	17000	6	45	LOWER BEARING	23425-458	----	1
6	LOCK WASHER	J25123-013	----	6	46	LWR MOTOR HOUSING	38311-309	13040	1
7	DIFFUSER	38632-064	24010	1	47	PIPE PLUG	P06	15079	1
8 *	SUCTION HEAD O-RING	25152-366	----	1	48	HEX HD CAPSCREW	B0604	15991	4
9 *	IMPELLER	38618-706	1102H	1	49 *	DYNA SEAL WASHER	S1586	----	4
10 *	IMPELLER NUT	D10S	17000	1	50 *	SEAL PLATE O-RING	S1748	----	1
11	SEAL PLATE	38272-420	24010	1	51 *	DIFFUSER O-RING	25152-281	----	1
12	SOC PIPE PLUG	PC24	17000	1	52	IMPELLER WASHER	31131-074	17000	1
13	SEAL DRAIN/FILL PLUG	PC06	17000	1	53	STRAINER SUPPORT	31413-075	15079	6
14	HEX HD CAPSCREW	B0808	17000	6	54	STRAINER	46611-011	2415V	1
15	LOCK WASHER	J08	17000	6	55	STUD	C0822	15991	6
16 *	LWR MTR HSG O-RING	S1865	----	1	56	LOCK WASHER	J08	15991	6
17	BEARING CAP	38322-216	13040	1	57	HEX NUT	D08	15991	6
18 *	STATOR KEY	N0612	17000	1	58	BASE PLATE	38352-317	13080	1
19	MOTOR HOUSING	38311-808	13000	1	59 *	IMPELLER KEY	N0404	17000	1
20	UPPER MTR HOUSING	38311-314	13000	1	NOT SHOWN:				
21 *	UPPER BEARING	23257-013	----	1		MOTOR VOLTAGE TAG			
22 *	UPPER MTR HSG O-RING	25152-281	----	1		-460V	6588BL	----	1
23 *	IMP ADJ SHIM SET	2X	17090	1		-575V	6588BM	----	1
24 *	LOWER SEAL ASSY	46512-076	----	1		CONTROL BOX			
25	SNAP RING	S700	----	1		-460V	27515-524	----	1
26 *	UPPER SEAL ASSY	25271-886	----	1		-575V	27515-534	----	1
27	SPRING HOLDER	25273-265	----	1		HEATER PACK			
28	HEX HD CAPSCREW	B1208	15991	2		-460V	27521-208	----	1
29	LOCK WASHER	J12	15991	2		-575	27521-207	----	1
30	FLAT WASHER	K12	15991	2		IMPELLER PULLER	48711-018	----	1
31	HOIST BAIL BUSHING	10045	15071	2		HEAT SHRINK TUBE	18763-249	----	1
32	HOISTING BAIL ASSY	44713-028	2415V	1		INSTRUCTION TAG	38817-073	----	1
33	DISCH FLANGE GSKT	38687-049	20000	1		G-R DECAL	GR-03	----	1
34	DISCHARGE FLANGE	38641-303	10010	1	OPTIONAL:				
35	PIPE PLUG	P04	17000	1		* REPAIR GASKET SET	48211-083	----	1
36	STUD	C0809	15991	6		6" NPT DISCH FLANGE	38642-207	10010	1
37	HEX NUT	D08	15991	6	LIQUID LEVEL DEVICES:				
38	NAME PLATE	2613GH	17020	1		DIAPHRAGM TYPE	GRP48-03 or GRP48-061		
39	DRIVE SCREW	BM#04-03	17000	2		FLOAT SWITCH	27471-180	----	1
40	STUD	C0607	15991	4		120V LIQ. LVL CONTROL	27521-321	----	1
41	DEFORM LOCK NUT	DD06	15991	4					
42	TERM HSG/CABLE ASSY	47367-077	----	1					

\* INDICATES PARTS RECOMMENDED FOR STOCK

# THE GORMAN-RUPP COMPANY • MANSFIELD, OHIO

GORMAN-RUPP OF CANADA LIMITED • ST. THOMAS, ONTARIO, CANADA Printed in U.S.A.



**THE GORMAN-RUPP COMPANY • MANSFIELD, OHIO**

GORMAN-RUPP OF CANADA LIMITED • ST. THOMAS, ONTARIO, CANADA Printed in U.S.A.

July 10, 2002

©2002 The Gorman-Rupp Company

3 of 4

Page 150.4 G4

# S4G1-E30 460/575/3

ACS

S/N 1264524 UP

PUMP ISSUE 3

## Terminal Housing And Cable Assembly

If your pump serial number is followed by an "N", your pump is **NOT** a standard production model. Contact the Gorman-Rupp Company to verify part numbers.

ITEM NO.	PART NAME	PART NUMBER	MAT'L CODE	QTY
1	TERMINAL GLAND	11367	13040	1
2	* CABLE - 50 FT	47325-005	---	1
3	* CABLE GRIP	11227L	---	1
4	STUD	C0808	15991	2
5	HEX NUT	D08	15991	2
6	GLAND BUSHING	10758K	19100	1
7	TERMINAL WASHER	10659	15991	1
8	TERMINAL HOUSING	38381-237	13000	1
9	TERMINAL	27214-035	---	1
10	HEAT SHRINK TUBE	31412-056	19530	2
11	ALLEN HEAD SETSCREW	GA#10-01S	15991	2
12	TERMINAL COLLAR	31811-057	14100	2
13	* DYNA SEAL WASHER	S1590	---	2
14	* DYNA SEAL WASHER	S1590	---	2
15	TERMINAL POST	11181	14100	2
16	ALLEN HEAD SETSCREW	GA#10-01S	15991	2
17	TERMINAL POST	38724-009	14100	3
18	ALLEN HEAD SETSCREW	GA0501 -1/2	14990	3
19	* DYNA SEAL WASHER	S1586	---	3
20	* DYNA SEAL WASHER	S1586	---	3
21	* TERMINAL PLATE GSKT	38687-529	20000	1
22	* TERMINAL PLATE	38711-001	23010	1
23	* TERMINAL PLATE GSKT	38687-529	20000	1
24	TERMINAL COLLAR	10144	14100	3
25	ALLEN HEAD SETSCREW	GA0501- 1/2	14990	3
26	* O-RING	25152-155	---	1
27	HEAT-SHRINK TUBE	31413-014	19530	3
28	TERMINAL	S1550	---	1
29	RD HD MACHINE SCREW	X0603	14990	2
30	T TYPE LOCKWASHER	AK06	15991	2
31	DRIVE SCREW	BM#04-03	17000	4
32	INFORMATION PLATE	38816-145	17050	1

NOT SHOWN:

RTV SEALANT 18771-106 --- 1 OZ

OPTIONAL:

HEAT SHRINK TERMINAL KIT 48315-010 --- 1

\* INDICATES PARTS RECOMMENDED FOR STOCK

## THE GORMAN-RUPP COMPANY • MANSFIELD, OHIO

**For U.S. and International Warranty Information,  
Please Visit [www.grpumps.com/warranty](http://www.grpumps.com/warranty)  
or call:  
U.S.: 419-755-1280  
International: +1-419-755-1352**

**For Canadian Warranty Information,  
Please Visit [www.grcanada.com/warranty](http://www.grcanada.com/warranty)  
or call:  
519-631-2870**