

PUBLICATION NUMBER PL-04022-02
Pump Issue 2
February 16, 1994

Use With: OM-04020
MR-04021



**PUMP MODEL
62E32 - B**

**MANUAL
PART 2 of 3**

**PARTS
LIST
WITH
PERFORMANCE CURVE**

THE GORMAN-RUPP COMPANY • MANSFIELD, OHIO

GORMAN-RUPP OF CANADA LIMITED • ST. THOMAS, ONTARIO, CANADA Printed in U.S.A.

©Copyright by the Gorman-Rupp Company

PERFORMANCE CURVE – SECTION A

RECORDING MODEL AND SERIAL NUMBERS

Please record the pump model and serial number in the spaces provided below and in the separate Installation/Operation Manual accompanying your pump. Your Gorman-Rupp distributor needs this information when you require parts or service.

Pump Model: _____

Serial Number: _____

WARRANTY INFORMATION

The pump warranty is provided as part of Gorman-Rupp's support program for customers who operate and maintain their equipment as described in this manual and other accompanying literature. Please note that should the equipment be abused or modified to change its performance beyond the original factory specifications, the warranty will become void and any claim will be denied.

PERFORMANCE CURVES

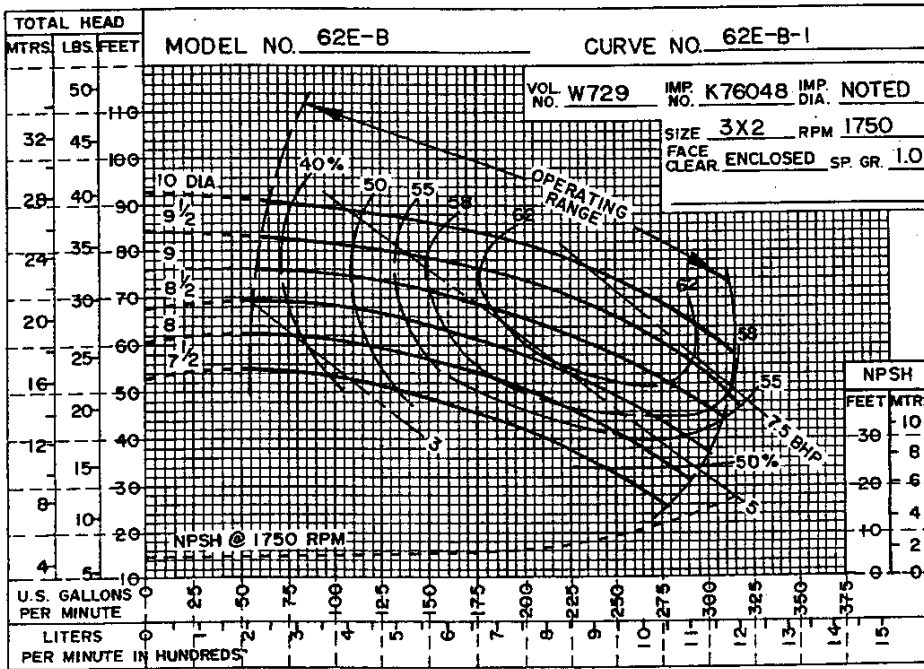
The performance curves on the following page are based on 70° F (21° C) clear water (or corrected to .80 specific gravity) at sea level with minimum suction lift. Since pump installations are seldom identical, your performance may be different due to such factors as viscosity, specific gravity, elevation, temperature, and impeller trim.

If your pump serial number is followed by an "N", your pump is **NOT** a standard production model. Contact the Gorman-Rupp Company to verify performance or part numbers.

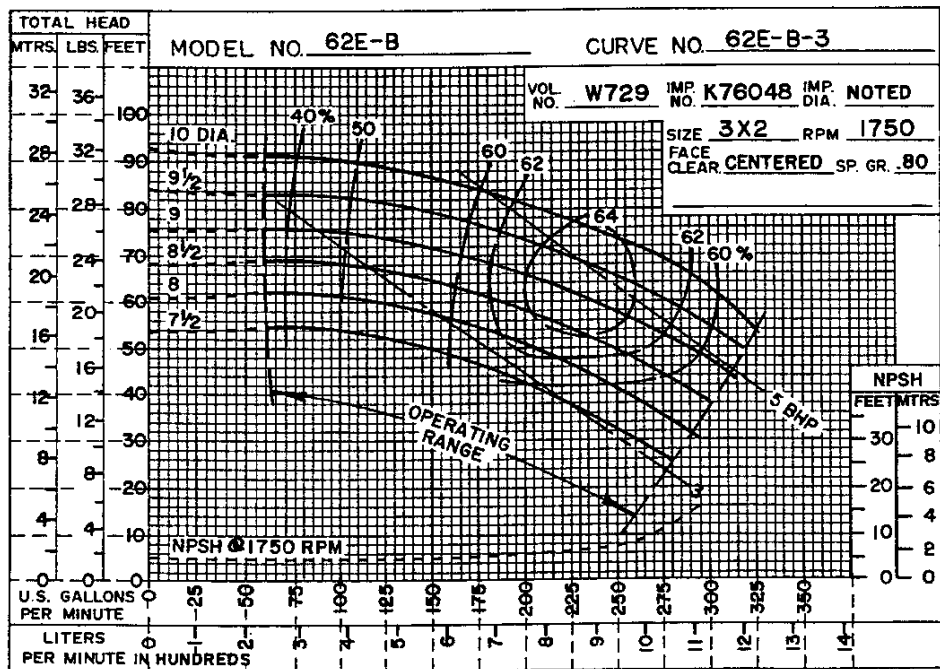


Pump speed and operating condition points must be within the continuous performance range shown on the curve(s).

This Page Intentionally Blank

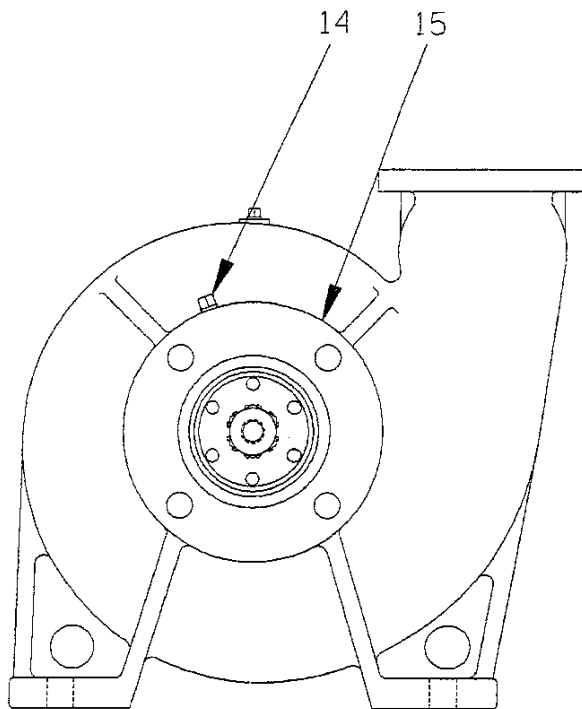
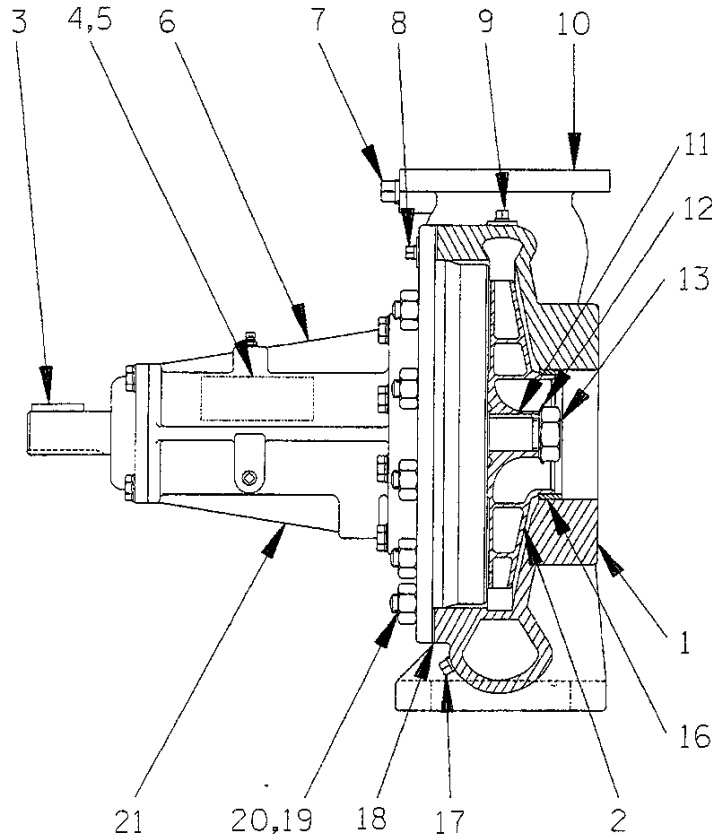


(Based on petroleum products)



Performance Curves - Model 62E32-B

S/N 1136075N Up
PUMP ISSUE 2



THE GORMAN-RUPP COMPANY • MANSFIELD, OHIO

GORMAN-RUPP OF CANADA LIMITED • ST. THOMAS, ONTARIO, CANADA

Printed in U.S.A.

**S/N 1136075N Up
PUMP ISSUE 2**

**PARTS LIST
Pump Model 62E32-B**

If your pump serial number is followed by an "N", your pump is **NOT** a standard production model. Contact the Gorman-Rupp Company to verify part numbers.

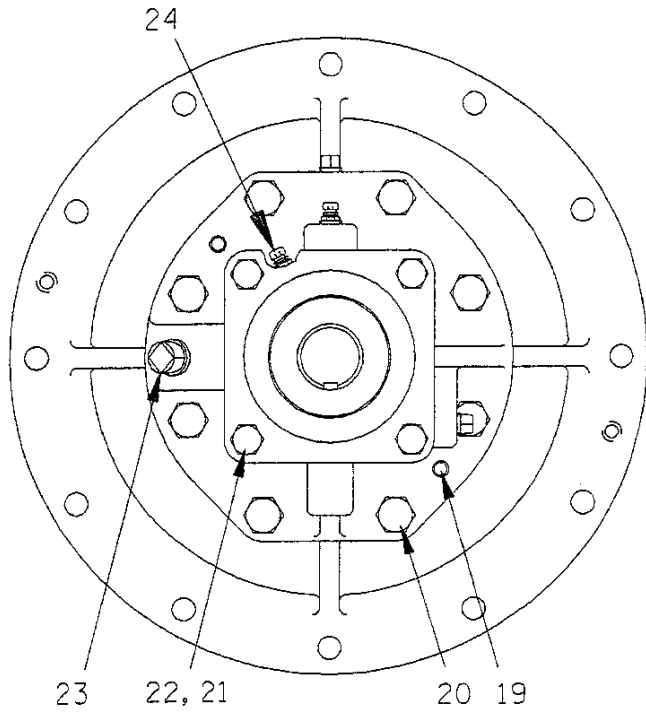
ITEM NO.	PART NAME	PART NUMBER	MAT'L CODE	QTY	ITEM NO.	PART NAME	PART NUMBER	MAT'L CODE	QTY
1	PUMP CASING	W00729	10140	1	17	PIPE PLUG	P02	15079	1
2 *	IMPELLER	K76048	13040	1	18 *	PUMP CASING GASKET	R08108	20000	1
3 *	SHAFT KEY	N0406	15990	1	19	STUD	C0606	15991	12
4	NAME PLATE	2613ED	13990	1	20	HEX NUT	D06	15991	12
5	DRIVE SCREW	BM#04-03	15990	2	21	BRG HOUSING ASSY	R12192-04	---	1
6	LUBE DECAL	38816-081	---	1					
7	PIPE PLUG	P06	15079	1		NOT SHOWN:			
8	PIPE PLUG	P02	15079	1		* DISCH FLANGE GASKET	N14226	18000	1
9	PIPE PLUG	P02	15079	1		* SUCT FLANGE GASKET	11589GA	18000	1
10	DISCHARGE STICKER	6588BJ	---	1		ROTATION DECAL	2613M	---	1
11 *	IMPELLER KEY	K79328-23	15990	1		INSTRUCTION TAG	38817-011	---	1
12	BRG LOCKWASHER	23962-506	---	1		BEARING TAG	6588ABB	---	1
13	IMPELLER NUT	K75775	15111	1					
14	PIPE PLUG	P02	15079	1		OPTIONAL:			
15	SUCTION STICKER	6588AG	---	1		SUCT/DISCH FLANGE KIT	K33849	---	1
16 †	WEAR RING	NOT AVAILABLE		2		BRONZE IMPELLER	K76048	14150	1

* INDICATES PARTS RECOMMENDED FOR STOCK

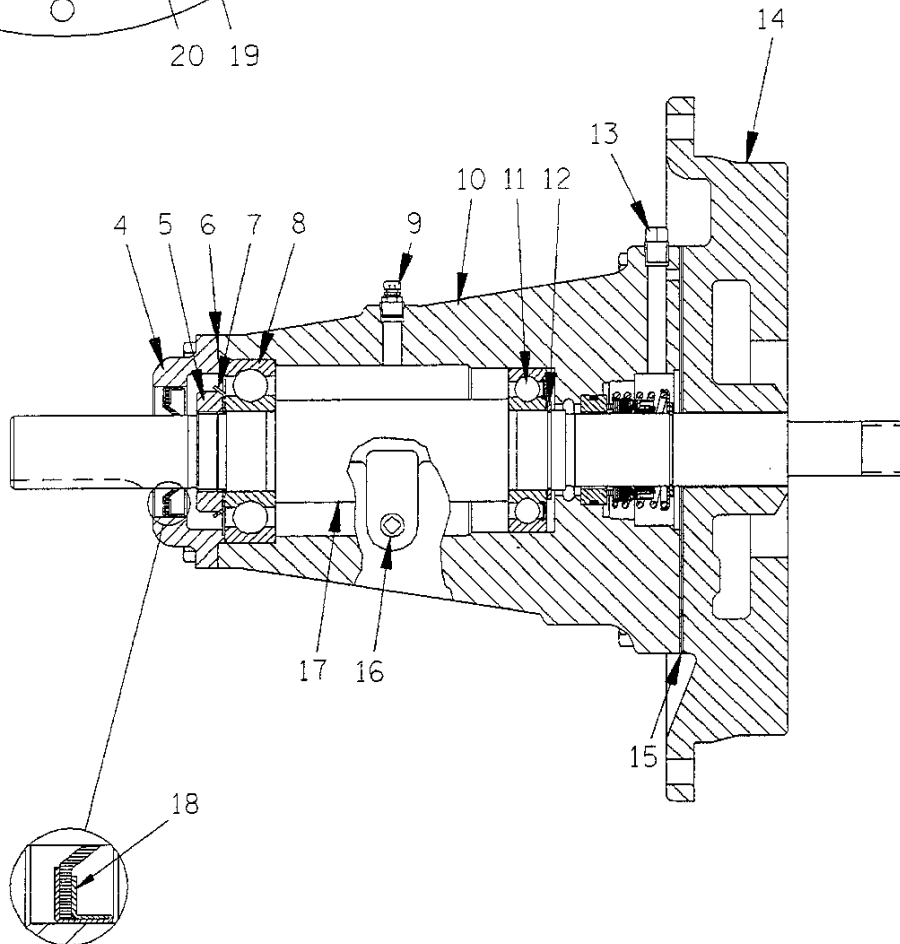
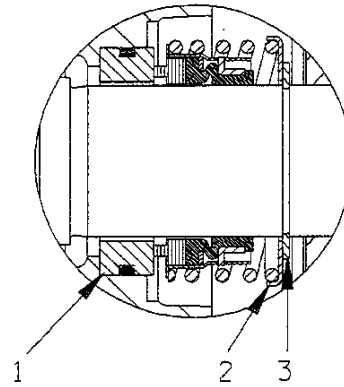
Above Serial Numbers Do Not Apply To Pumps Made In Canada.

CANADIAN SERIAL NO. AND UP

† ALL IMPELLERS ARE TRIMMED AND INCLUDE WEAR RINGS AND GROOVE PINS. WEAR RINGS ARE NOT SOLD SEPARATELY.



SEAL AREA DETAIL



THE GORMAN-RUPP COMPANY • MANSFIELD, OHIO

GORMAN-RUPP OF CANADA LIMITED • ST. THOMAS, ONTARIO, CANADA

Printed in U.S.A.

S/N 1136075N UP
PUMP ISSUE 2

PARTS LIST
R12192-04 Bearing Housing Assembly

ITEM NO.	PART NAME	PART NUMBER	MAT'L CODE	QTY
1	* SEAL ASSEMBLY	25271-192	----	1
2	SPRING HOLDER	25273-266	----	1
3	RETAINING RING	S700	----	1
4	BEARING CAP	N14130	10010	1
5	BEARING LOCK NUT	S301	----	1
6	* BEARING CAP GASKET	K74033	18000	1
7	BRG LOCKWASHER	S302	----	1
8	* OUTBOARD BEARING	23282-008	----	1
9	AIR VENT	S2162	----	1
10	BEARING HOUSING	T02990	11010	1
11	* INBOARD BEARING	23257-012	----	1
12	BEARING RET RING	S248	----	1
13	PIPE PLUG	P02	15079	1
14	BODY COVER	T03532-07	10140	1
15	* BODY COVER GASKET	N14144	18000	1
16	PIPE PLUG	P02	15079	1
17	* IMPELLER SHAFT	R10520	15010	1
18	* OIL SEAL	25227-230	----	1
19	DOWEL PIN	21133-066	----	2
20	HEX HD CAPSCREW	21632-597	----	8
21	HEX HD CAPSCREW	B0504	15991	4
22	LOCKWASHER	J05	15991	4
23	PIPE PLUG	P06	15079	1
24	AIR VENT FITTING	S2162	----	1
OPTIONAL:				
	SST IMPELLER SHAFT	R10520	17080	1
	TEFLON SEAL ASSY	25271-743	----	1

* INDICATES PARTS RECOMMENDED FOR STOCK

THE GORMAN-RUPP COMPANY • MANSFIELD, OHIO

**For U.S. and International Warranty Information,
Please Visit www.grpumps.com/warranty**

or call:

U.S.: 419-755-1280

International: +1-419-755-1352

**For Canadian Warranty Information,
Please Visit www.grcanada.com/warranty**

or call:

519-631-2870

THE GORMAN-RUPP COMPANY • MANSFIELD, OHIO

GORMAN-RUPP OF CANADA LIMITED • ST. THOMAS, ONTARIO, CANADA