

Use With: OM-03989
MR-03991

PUBLICATION NUMBER PL-04015-02
Pump Issue 2
May 17, 1999
Rev. B 05-7-2025



PUMP MODEL
RD2A31-B

MANUAL
PART 2 of 3

PARTS
LIST
WITH
PERFORMANCE CURVE

THE GORMAN-RUPP COMPANY • MANSFIELD, OHIO

www.grpumps.com

GORMAN-RUPP OF CANADA LIMITED • ST. THOMAS, ONTARIO, CANADA Printed in U.S.A.

© Copyright by the Gorman-Rupp Company

Register your new
Gorman-Rupp pump online at
www.grpumps.com

Valid serial number and e-mail address required.

RECORD YOUR PUMP MODEL AND SERIAL NUMBER

Please record your pump model and serial number in the spaces provided below. Your Gorman-Rupp distributor needs this information when you require parts or service.

Pump Model: _____

Serial Number: _____

PERFORMANCE CURVE – SECTION A

RECORDING MODEL AND SERIAL NUMBERS

Please record the pump model and serial number in the spaces provided below and in the separate Installation/Operation Manual accompanying your pump. Your Gorman-Rupp distributor needs this information when you require parts or service.

Pump Model: _____

Serial Number: _____

WARRANTY INFORMATION

The pump warranty is provided as part of Gorman-Rupp's support program for customers who operate and maintain their equipment as described in this manual and other accompanying literature. Please note that should the equipment be abused or modified to change its performance beyond the original factory specifications, the warranty will become void and any claim will be denied.

PERFORMANCE CURVES

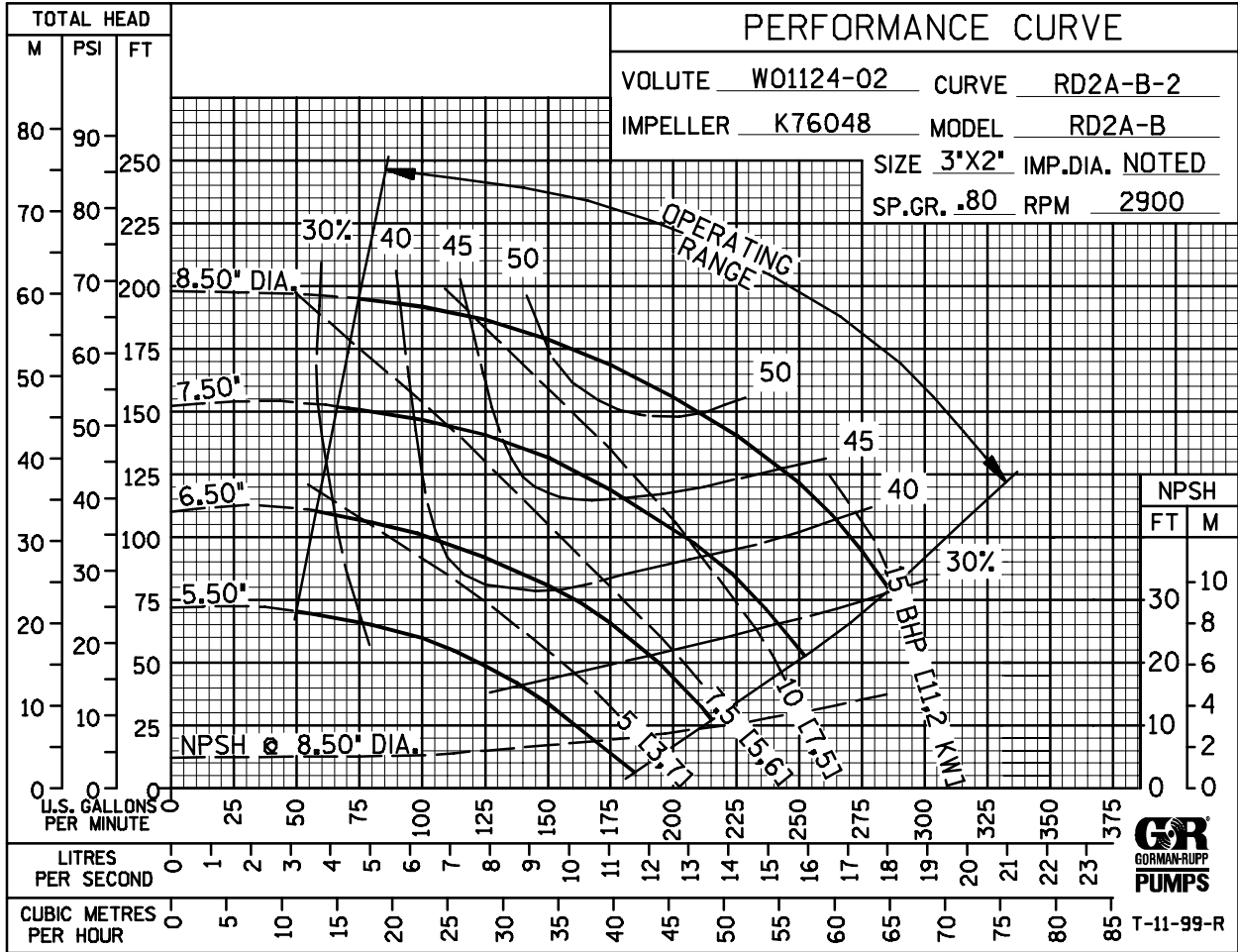
The performance curves on the following page are based on 70° F (21° C) clear water at sea level, corrected to 0.80 specific gravity, with minimum suction lift. Since pump installations are seldom identical, your performance may be different due to such factors as viscosity, specific gravity, elevation, temperature, and impeller trim.

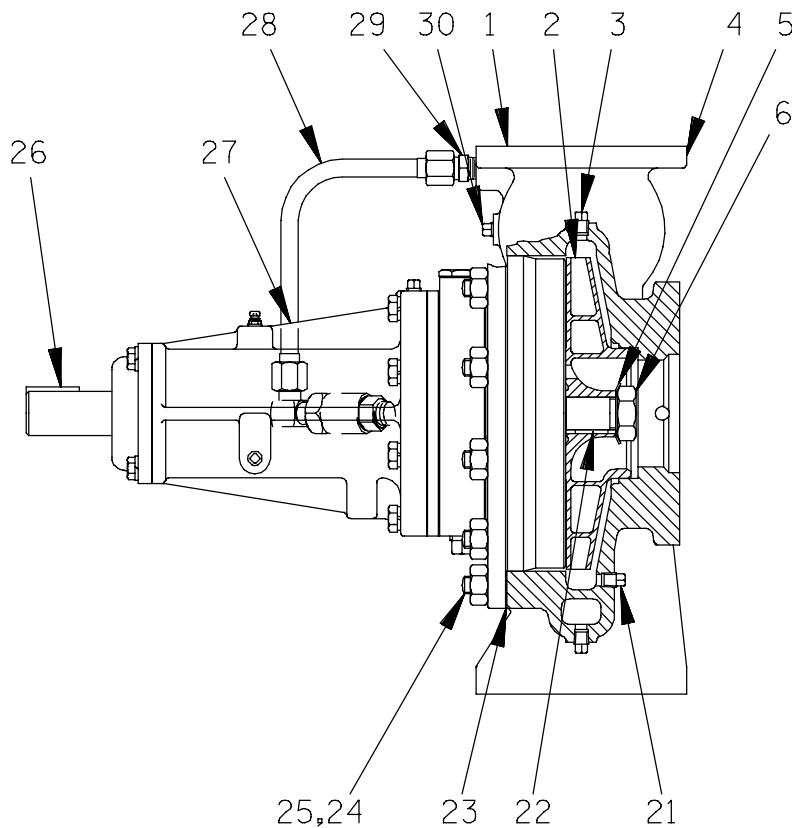
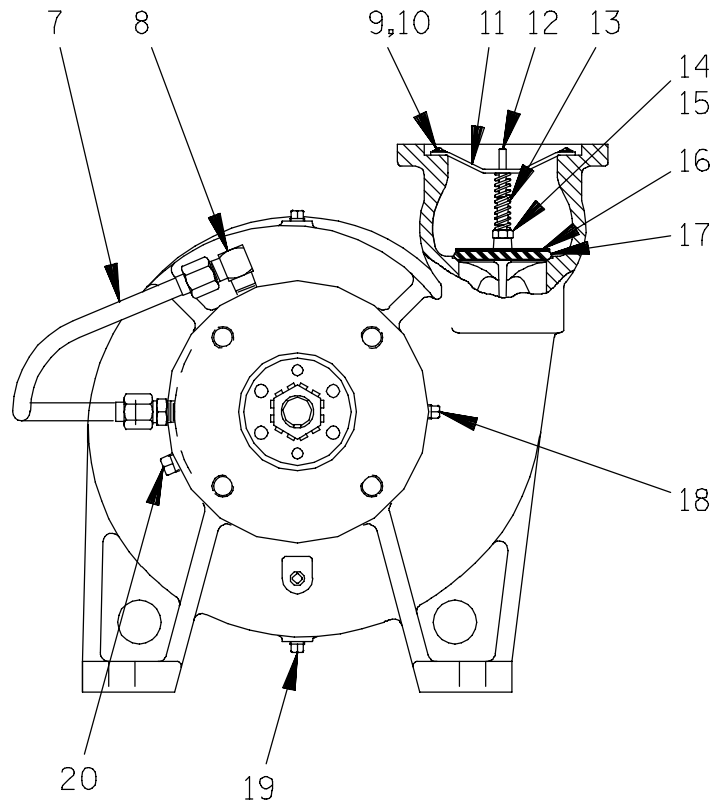
If your pump serial number is followed by an "N", your pump is **NOT** a standard production model. Contact the Gorman-Rupp Company to verify performance or part numbers.



Pump speed and operating condition points must be within the continuous performance range shown on the curve(s).

This Page Intentionally Blank

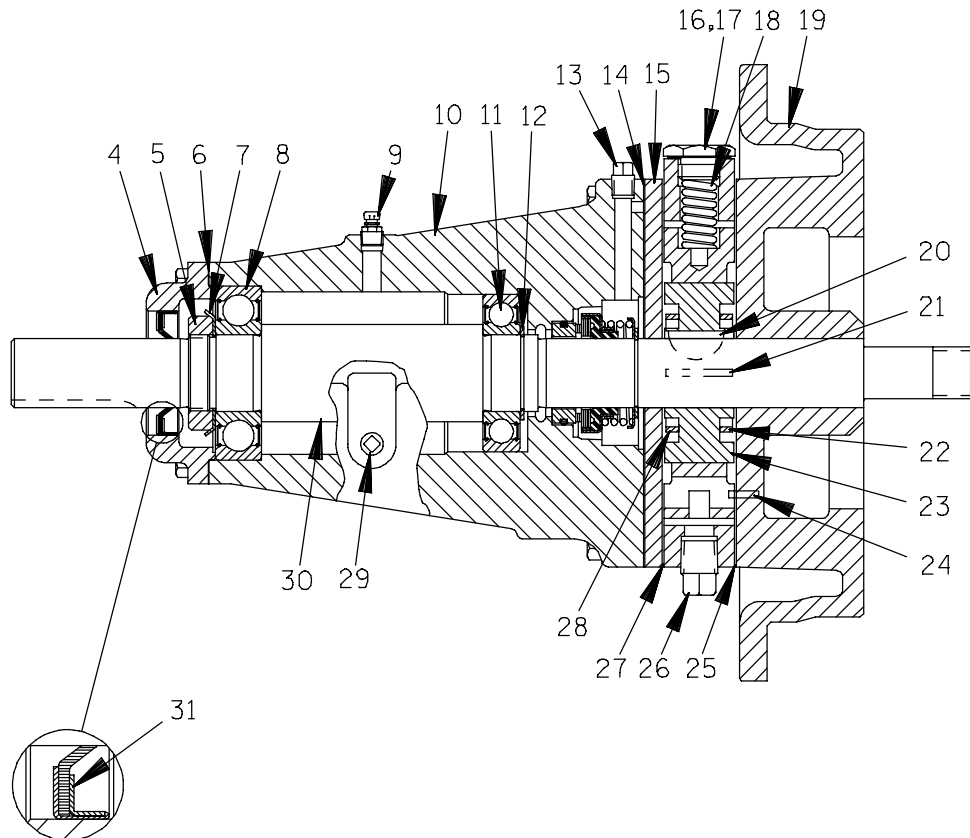
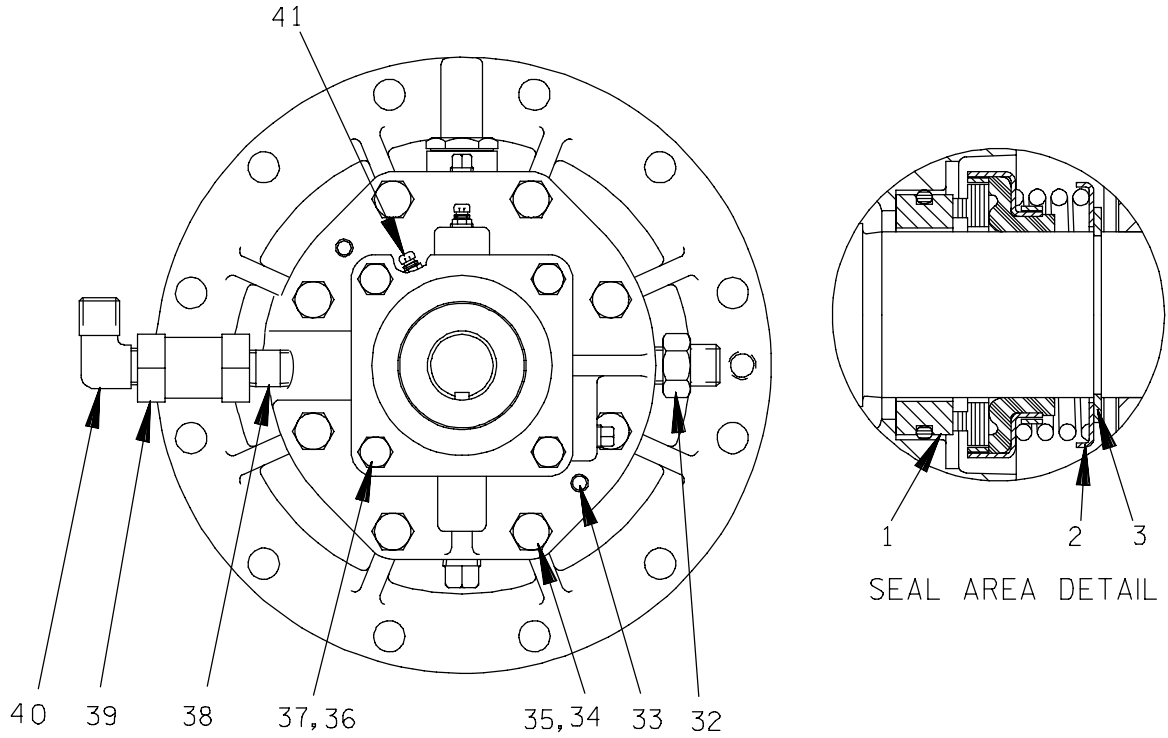




THE GORMAN-RUPP COMPANY • MANSFIELD, OHIO

GORMAN-RUPP OF CANADA LIMITED • ST. THOMAS, ONTARIO, CANADA

Printed in U.S.A.



S/N 1188242 Up
PUMP ISSUE 2

PARTS LIST
44143-001 Bearing Housing Assembly

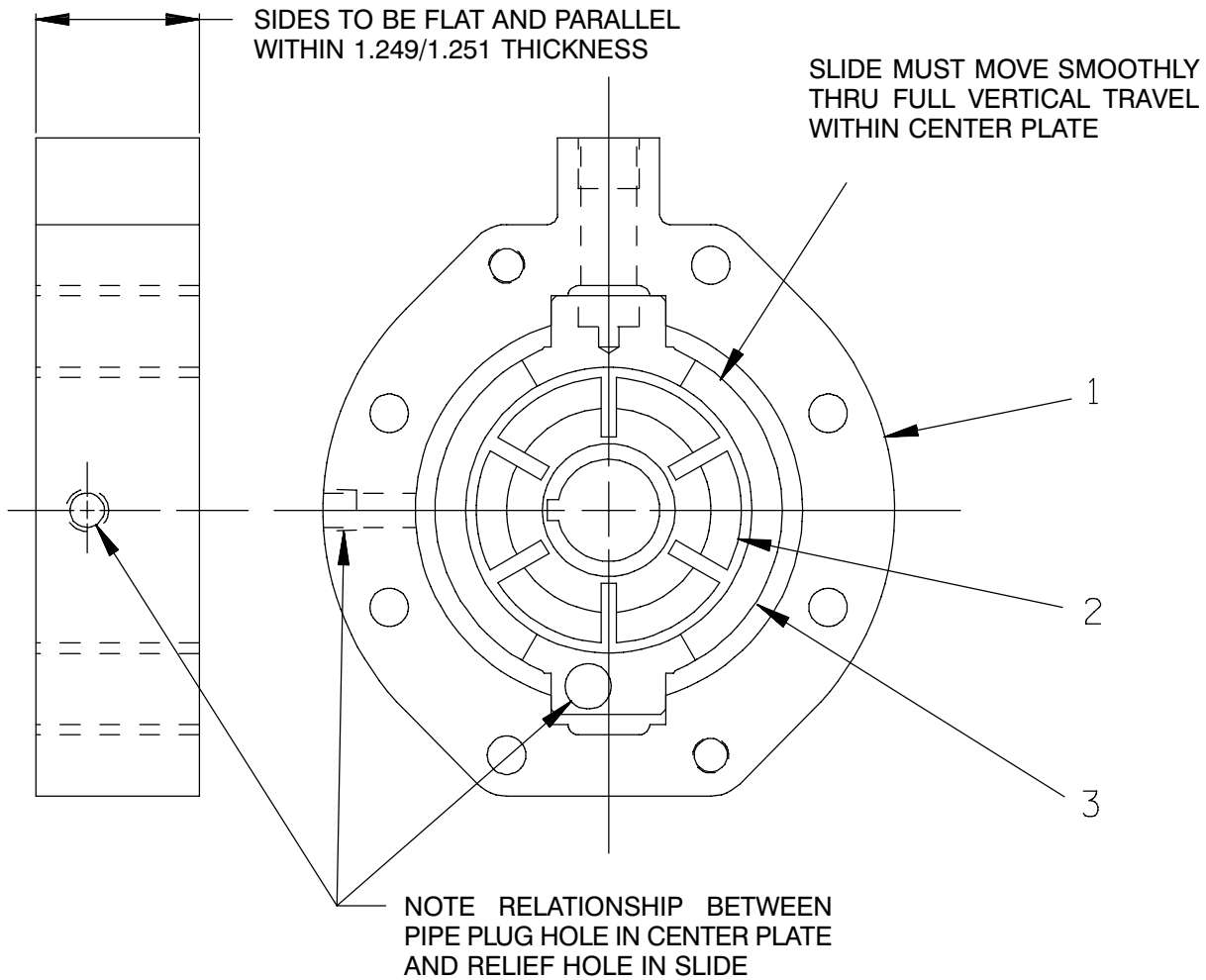
ITEM NO.	PART NAME	PART NUMBER	MAT'L CODE	QTY	ITEM NO.	PART NAME	PART NUMBER	MAT'L CODE	QTY
1 *	SEAL ASSEMBLY	25271-192	----	1	27 *	CENTER PLATE GASKET	N14145	19210	1
2 *	SPRING CTR WASHER	25273-266	----	1	28	BLADE SPACER	K74031	15030	1
3	SEAL RETAINING RING	S700	----	1	29	PIPE PLUG	P02	15079	1
4	BEARING CAP	N14130	10010	1	30 *	IMPELLER SHAFT	T07888	15010	1
5	BEARING LOCK NUT	S301	----	1	31 *	OIL SEAL	25227-230	----	1
6 *	BEARING CAP GASKET	K74033	18000	1	32	CONNECTOR	26351-062	----	1
7	TAB WASHER	S302	----	1	33	DOWEL PIN	21133-073	----	2
8 *	OUTBOARD BEARING	23282-008	----	1	34	HEX HD CAPSCREW	B0612	15991	8
9	AIR VENT	S2162	----	1	35	LOCKWASHER	J06	15991	8
10	BEARING HOUSING	T02990	11010	1	36	HEX HD CAPSCREW	B0504	15991	4
11 *	BALL BEARING	23257-012	----	1	37	LOCKWASHER	J05	15991	4
12	BEARING RET RING	S248	----	1	38	CLOSE NIPPLE	T06	15079	1
13	PIPE PLUG	P02	15079	1	39	CHECK VALVE	26641-082	----	1
14 *	SPACER PLATE GASKET	N14144	18000	1	40	MALE ELBOW	26351-133	----	1
15	SPACER PLATE	N14129	11010	1	41	AIR VENT	S2162	----	1
16	PRESS REG SPRING CAP	K68064	15991	1					
17 *	SPRING CAP GASKET	K86067	----	1		OPTIONAL:			
18 *	PRESS REG SPRING	K76301	----	1		SST IMPELLER SHAFT	T07888	17080	1
19	BODY COVER	T07826-02	11010	1		TEFLON SEAL ASSY	25271-743	----	1
20 *	ROTOR WOODRUFF KEY	K61559	15990	1		● OIL LUBE BEARING	44143-096	----	1
21 *	ROTOR BLADE	K79300-20	----	6		HOUSING ASSEMBLY			
22	ROTOR BLADE SPACER	K74031	15030	1		-INBOARD BEARING	S310	----	1
23	GROUP GRIND	42212-013	----	1		-OUTBOARD BEARING	23275-008	----	1
24 *	LOCATING PIN	21154-666	----	1		-OIL CUP	26713-051	----	1
25 †	CENTER PLATE GASKET	N14145	18010	2		GROUP GRIND WITH C.I. ROTOR			
26	PIPE PLUG	P06	15079	1		-C.I. GROUP GRIND	LK05266	----	1

* INDICATES PARTS RECOMMENDED FOR STOCK

† 2 GASKETS REQUIRED WHEN ROTOR OR SLIDE IS THICKER THAN CENTER PLATE.

● ALL OTHER COMPONENTS SAME AS STANDARD BEARING HOUSING ASSEMBLY.

THE GORMAN-RUPP COMPANY ● MANSFIELD, OHIO



PARTS LIST
42212-013 Group Grind

ITEM NO.	PART NAME	PART NUMBER	MAT'L CODE	QTY
1	CENTER PLATE	NOT AVAILABLE	---	1
2	ROTOR	NOT AVAILABLE	---	1
3	SLIDE	NOT AVAILABLE	---	1

NOTE: THE GROUP GRIND MUST BE REPLACED AS A COMPLETE UNIT: INDIVIDUAL PIECE PARTS ARE NOT SOLD SEPARATELY.

THE GORMAN-RUPP COMPANY • MANSFIELD, OHIO

GORMAN-RUPP OF CANADA LIMITED • ST. THOMAS, ONTARIO, CANADA

Printed in U.S.A.

**For Warranty Information, Please Visit
www.grpumps.com/warranty
or call:
U.S.: 419-755-1280
Canada: 519-631-2870
International: +1-419-755-1352**

GORMAN-RUPP PUMPS