



**PUMP MODEL
RD4A32-B**

**MANUAL
PART 2 of 3**

**PARTS
LIST
WITH
PERFORMANCE CURVE**

GORMAN-RUPP PUMPS

www.grpumps.com

Register your new
Gorman-Rupp pump online at
www.grpumps.com

Valid serial number and e-mail address required.

RECORD YOUR PUMP MODEL AND SERIAL NUMBER

Please record your pump model and serial number in the spaces provided below. Your Gorman-Rupp distributor needs this information when you require parts or service.

Pump Model: _____
Serial Number: _____

PERFORMANCE CURVE – SECTION A

RECORDING MODEL AND SERIAL NUMBERS

Please record the pump model and serial number in the spaces provided below and in the separate Installation/Operation Manual accompanying your pump. Your Gorman-Rupp distributor needs this information when you require parts or service.

Pump Model: _____

Serial Number: _____

WARRANTY INFORMATION

The pump warranty is provided as part of Gorman-Rupp's support program for customers who operate and maintain their equipment as described in this manual and other accompanying literature. Please note that should the equipment be abused or modified to change its performance beyond the original factory specifications, the warranty will become void and any claim will be denied.

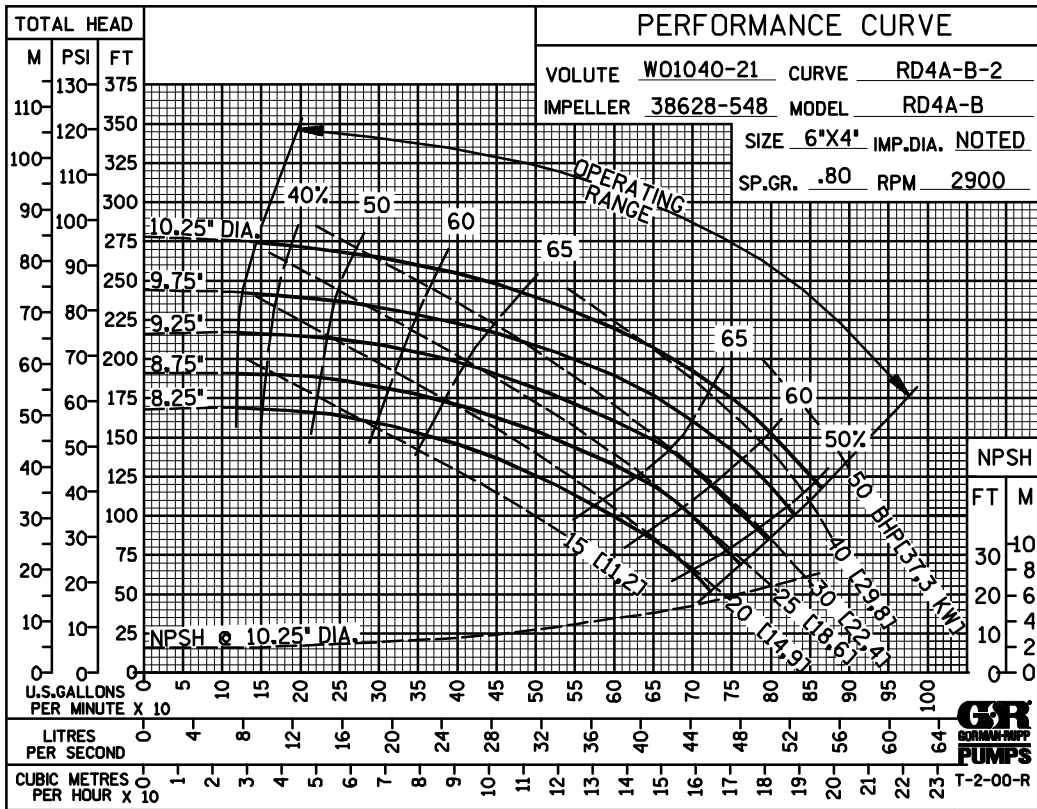
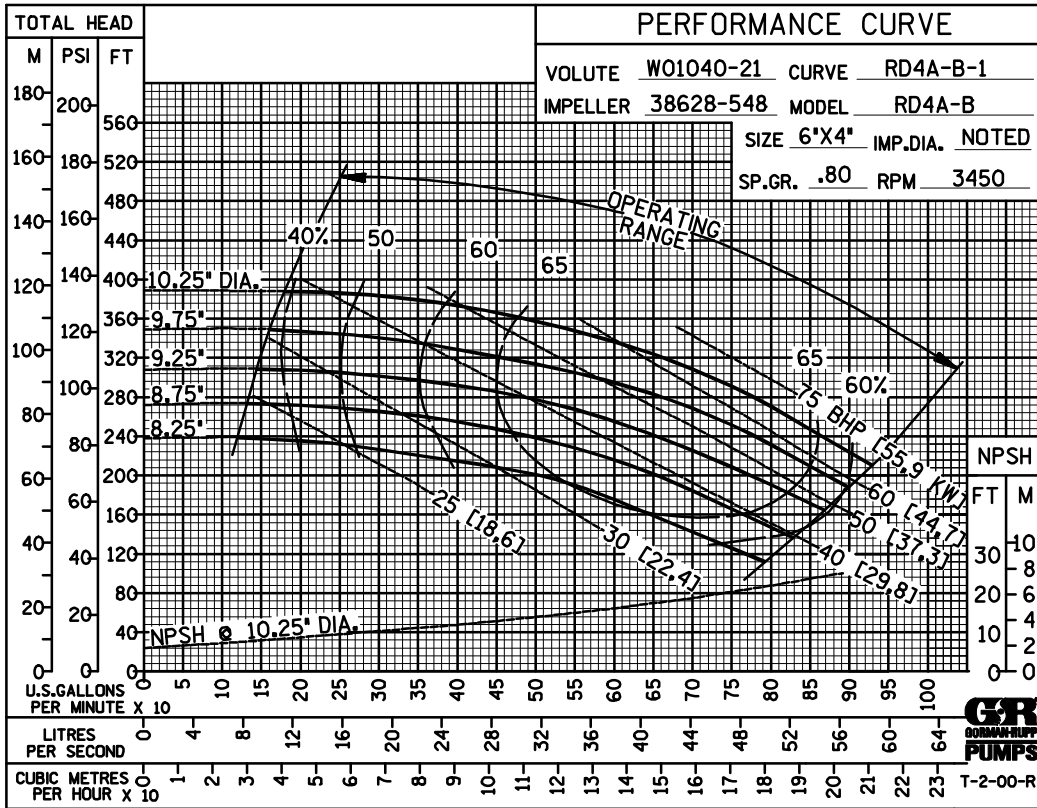
PERFORMANCE CURVES

The performance curves on the following page are based on 70°F (21°C) clear water at sea level, corrected to 0.80 specific gravity, with minimum suction lift. Since pump installations are seldom identical, your performance may be different due to such factors as viscosity, specific gravity, elevation, temperature, and impeller trim.

If your pump serial number is followed by an "N", your pump is **NOT** a standard production model. Contact the Gorman-Rupp Company to verify performance or part numbers.



Pump speed and operating condition points must be within the continuous performance range shown on the curve(s).

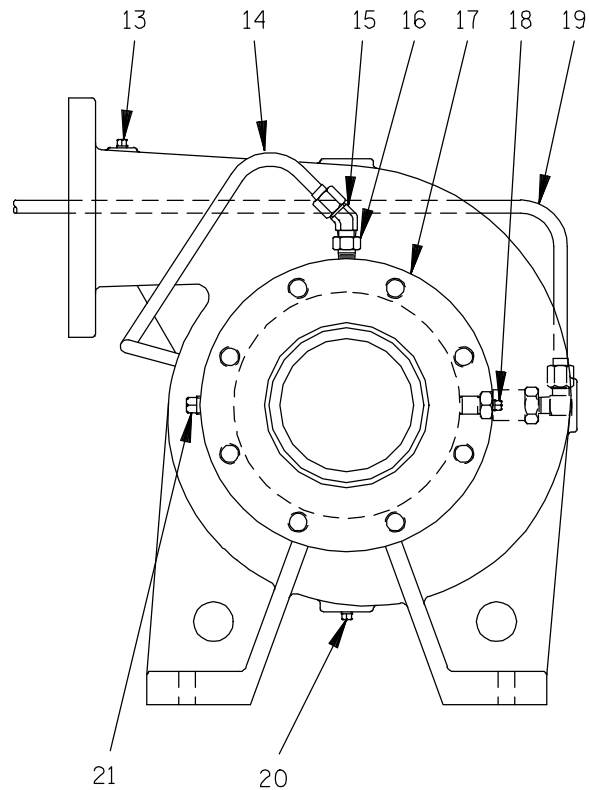
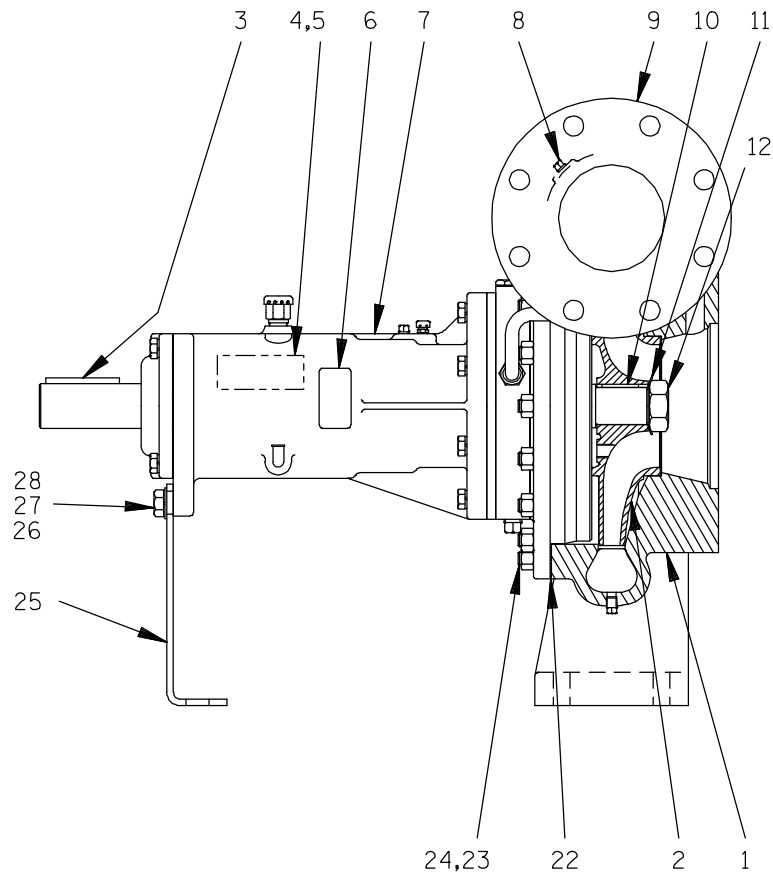


Performance Curve – Model RD4A32-B

This Page Intentionally Blank

RD4A32-B

S/N 1195933N Up
PUMP ISSUE 3



GORMAN-RUPP PUMPS

www.grpumps.com

RD4A32-B

S/N 1195933N Up
PUMP ISSUE 3

PARTS LIST Pump Model RD4A32-B

If your pump serial number is followed by an "N", your pump is **NOT** a standard production model. Contact the Gorman-Rupp Company to verify part numbers.

| ITEM NO. | PART NAME | PART NUMBER | MAT'L CODE | QTY | ITEM NO. | PART NAME | PART NUMBER | MAT'L CODE | QTY |
|----------|--------------------|-------------|------------|-----|-----------------------|---------------------|-------------|------------|-----|
| 1 | PUMP CASING | W01040-21 | 10140 | 1 | 23 | STUD | C0807 | 15991 | 18 |
| 2 * | IMPELLER | 38628-548 | 13048 | 1 | 24 | HEX NUT | D08 | 15991 | 18 |
| 3 * | SHAFT KEY | N0611 | 15990 | 1 | 25 | BEARING HSG SUPPORT | R12852-02 | 15990 | 1 |
| 4 | NAME PLATE | 2613DZ | 13990 | 1 | 26 | HEX HD CAPSCREW | B0805 | 15991 | 2 |
| 5 | DRIVE SCREW | BM#04-03 | 17000 | 2 | 27 | LOCKWASHER | J08 | 15991 | 2 |
| 6 | BRG LUBE DECAL | 38816-074 | ---- | 1 | 28 | FLAT WASHER | K08 | 15991 | 2 |
| 7 | BRG HOUSING ASSY | R12924-02 | ---- | 1 | NOT SHOWN: | | | | |
| 8 | PIPE PLUG | P02 | 15079 | 1 | * DISCH FLANGE GASKET | N14147 | 18000 | 1 | |
| 9 | DISCHARGE STICKER | 6588BJ | ---- | 1 | * SUCTION FLANGE GSKT | 1679G | 18000 | 1 | |
| 10 * | IMPELLER KEY | K79330-23 | 15990 | 1 | INSTRUCTION TAG | 38817-011 | ---- | 1 | |
| 11 | LOCKWASHER | S302 | ---- | 1 | MALE ELBOW | 25812-161 | ---- | 1 | |
| 12 | IMPELLER NUT | K76645 | 15111 | 1 | G-R DECAL | GR-03 | ---- | 1 | |
| 13 | PIPE PLUG | P02 | 15079 | 1 | ROTATION DECAL | 2613M | ---- | 1 | |
| 14 | SUCTION TUBE ASSY | 46335-066 | ---- | 1 | OPTIONAL: | | | | |
| 15 | MALE ELBOW | 25812-161 | ---- | 1 | DISCHARGE CHECK VALVE | | | | |
| 16 | STRAINER | 26841-094 | ---- | 1 | -CHECK VALVE | 26642-205 | ---- | 1 | |
| 17 | SUCTION STICKER | 6588AG | ---- | 1 | -CHECK VALVE GSKT | K79206-29 | ---- | 1 | |
| 18 | PIPE PLUG | P02 | 15079 | 1 | -HEX HD CAPSCREW | B1011 | 15991 | 8 | |
| 19 | DISCH TUBE ASSY | 46335-087 | ---- | 1 | -HEX NUT | D10 | 15991 | 8 | |
| 20 | PIPE PLUG | P02 | 15079 | 1 | BRONZE IMPELLER | N18952 | 14150 | 1 | |
| 21 | PIPE PLUG | P06 | 15079 | 1 | ● AIR RELEASE VALVE | GRP52-05A | ---- | 1 | |
| 22 * | PUMP CASING GASKET | R11618 | 20000 | 1 | | | | | |

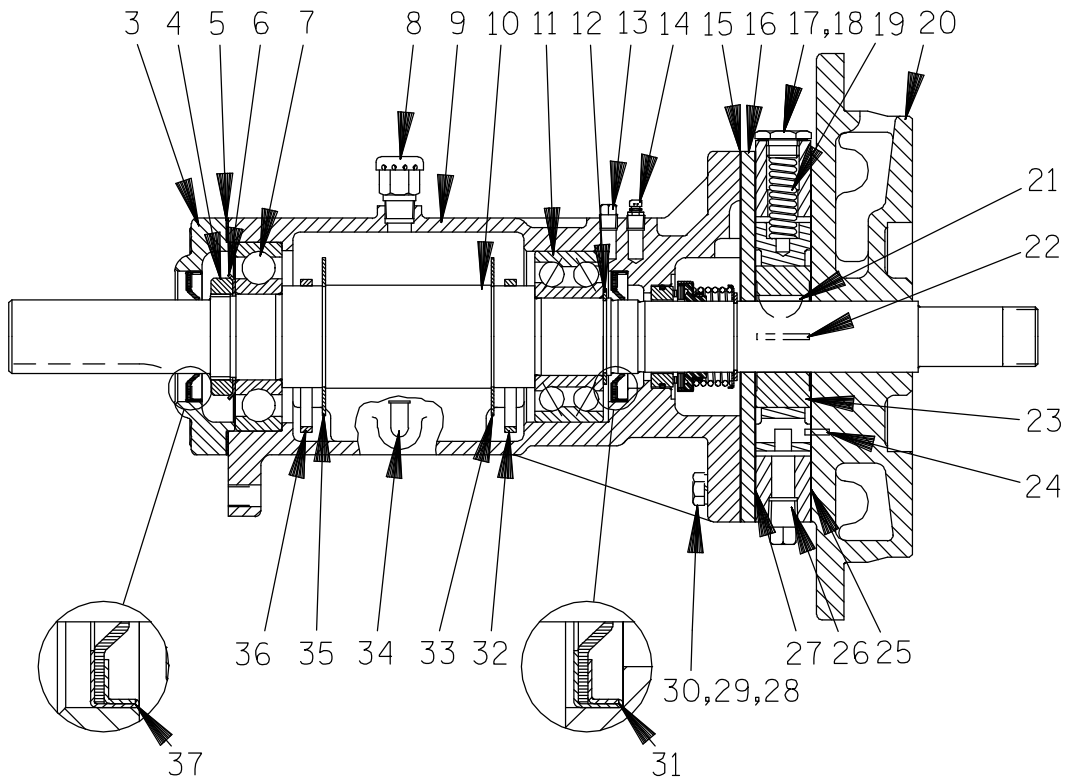
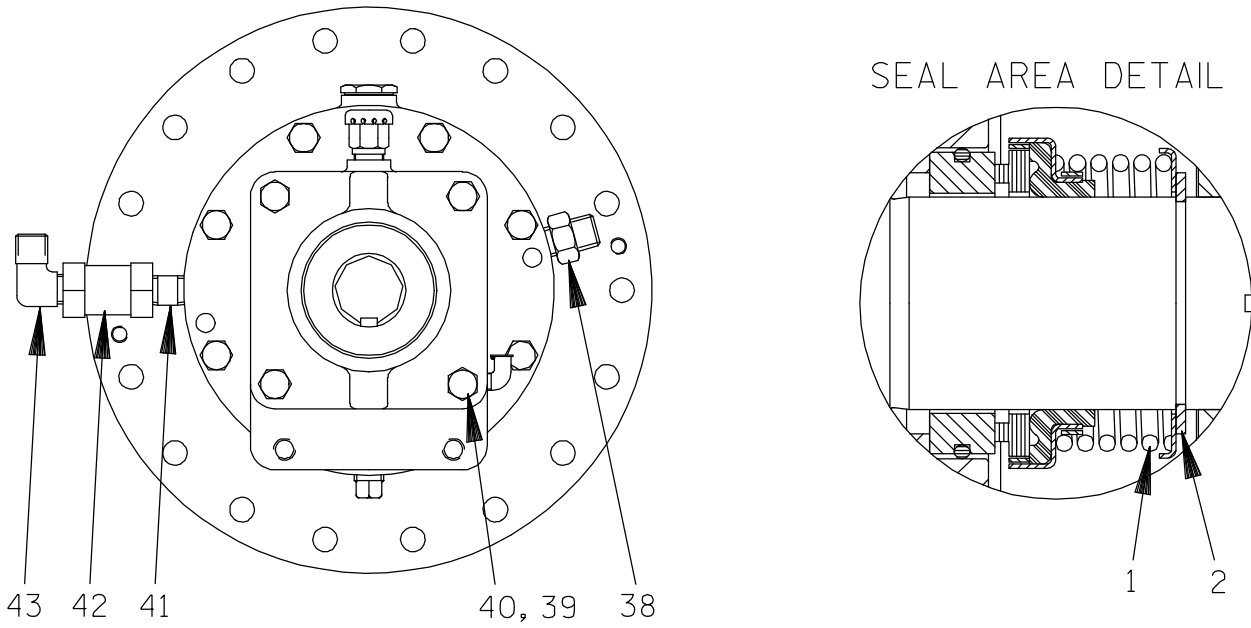
* INDICATES PARTS RECOMMENDED FOR STOCK

† ALL ROTO-PRIME[®] IMPELLERS ARE TRIMMED.

● SEE ACCOMPANYING LITERATURE FOR INDIVIDUAL PARTS, MAINTENANCE AND REPAIR.

☞ INCLUDED WITH REPAIR 46474-343 ---- 1
PUMP CASING ASSY

GORMAN-RUPP PUMPS



GORMAN-RUPP PUMPS

RD4A32—B

S/N 1195933N Up
PUMP ISSUE 3

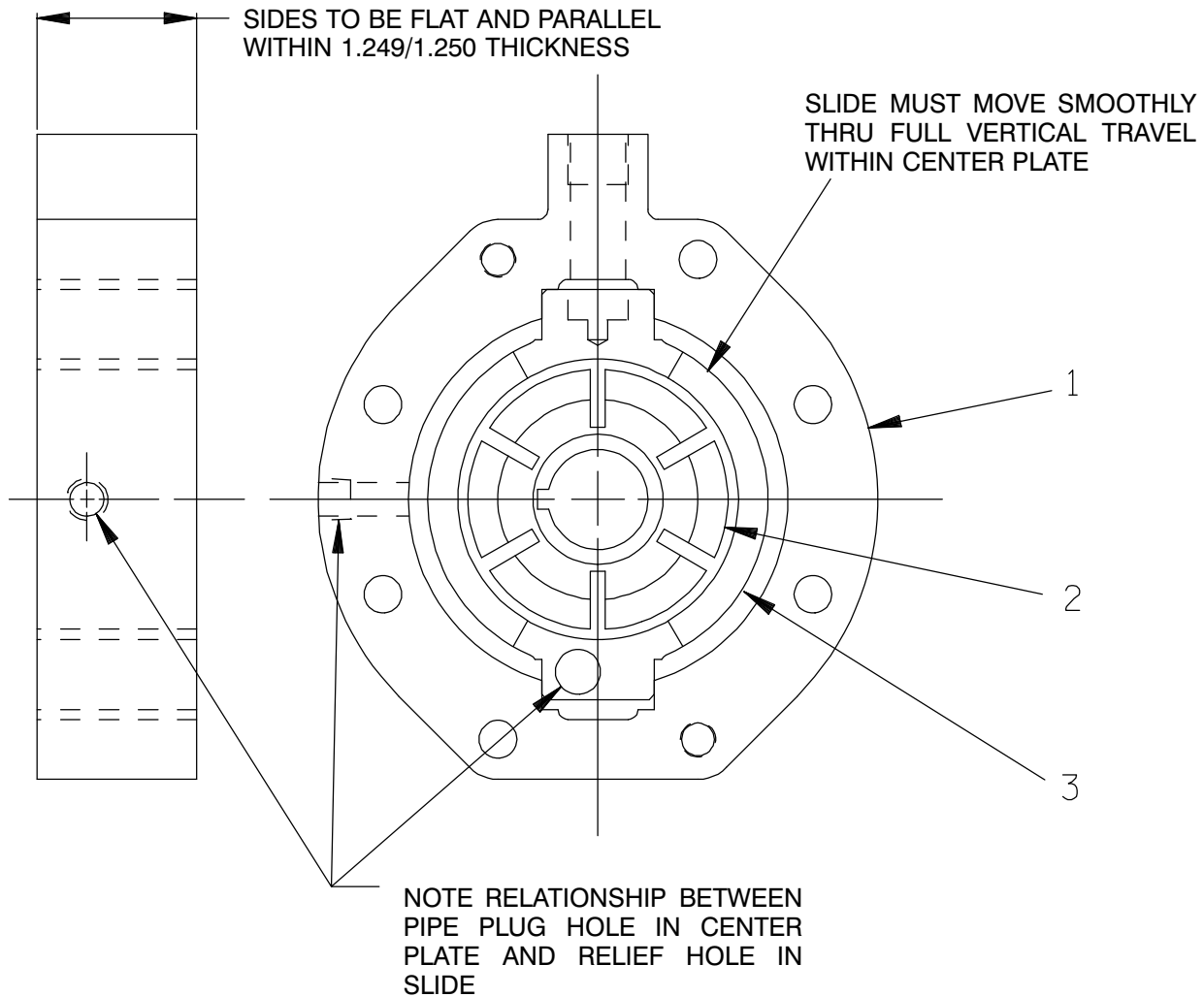
PARTS LIST R12924—02 Bearing Housing Assembly

| ITEM NO. | PART NAME | PART NUMBER | MAT'L CODE | QTY | ITEM NO. | PART NAME | PART NUMBER | MAT'L CODE | QTY |
|----------|----------------------|-------------|------------|-----|----------|---------------------|-------------|------------|-----|
| 1 * | SEAL ASSEMBLY | 25271-921 | ---- | 1 | 25 † | CENTER PLATE GASKET | R10150 | 19210 | 2 |
| 2 | SEAL RETAINING RING | 24124-243 | ---- | 1 | 26 | PIPE PLUG | P06 | 15079 | 1 |
| 3 | BEARING CAP | R12770-02 | 10010 | 1 | 27 * | CENTER PLATE GASKET | R10150 | 19210 | 1 |
| 4 | BEARING LOCK NUT | 23962-011 | ---- | 1 | 28 | HEX HD CAPSCREW | B0612 | 15991 | 8 |
| 5 * | BEARING CAP GASKET | N18938-01 | 18000 | 1 | 29 | LOCKWASHER | J06 | 15991 | 8 |
| 6 | TAB WASHER | 23962-511 | ---- | 1 | 30 | DOWEL PIN | 21133-113 | ---- | 2 |
| 7 * | OUTBOARD BEARING | 23275-211 | ---- | 1 | 31 * | OIL SEAL | 25227-240 | ---- | 1 |
| 8 | AIR VENT | S1703 | ---- | 1 | 32 | SLINGER RING | K86483 | 15030 | 1 |
| 9 | BEARING HOUSING | W01172-04 | 11010 | 1 | 33 | SLINGER RING STOP | K76632-01 | ---- | 1 |
| 10 * | IMPELLER SHAFT | T08623-02 | 15010 | 1 | 34 | OILER | 26713-054 | ---- | 1 |
| 11 * | BALL BEARING | 23421-410 | ---- | 1 | 35 | SLINGER RING STOP | K76632-01 | ---- | 1 |
| 12 | BEARING RET RING | 24124-245 | ---- | 1 | 36 | SLINGER RING | K86483 | 15030 | 1 |
| 13 | PIPE PLUG | P02 | 15079 | 1 | 37 * | OIL SEAL | 25227-240 | ---- | 1 |
| 14 | AIR VENT | S2162 | ---- | 1 | 38 | CONNECTOR | 25812-214 | ---- | 1 |
| 15 * | SPACER PLATE GASKET | R12923 | 18000 | 1 | 39 | HEX HD CAPSCREW | B0605 | 15991 | 4 |
| 16 | SPACER PLATE | R12771-02 | 11010 | 1 | 40 | LOCKWASHER | J06 | 15991 | 4 |
| 17 | PRESS REG SPRING CAP | K68064 | 15991 | 1 | 41 | HVY PPIPE NIPPLE | THA0606 | 15079 | 1 |
| 18 * | SPRING CAP GASKET | K86067 | ---- | 1 | 42 | CHECK VALVE | 26641-112 | ---- | 1 |
| 19 * | PRESS REG SPRING | K82659 | ---- | 1 | 43 | MALE ELBOW | 25812-011 | ---- | 1 |
| 20 | BODY COVER | T06762-21 | 10140 | 1 | | NOT SHOWN: | | | |
| 21 * | ROTOR WOODRUFF KEY | K61559 | 15990 | 1 | | PIPE PLUG | P02 | 15079 | 1 |
| 22 * | ROTOR BLADE | K79300-22 | ---- | 6 | | OPTIONAL: | | | |
| 23 | GROUP GRIND | LK05268 | ---- | 1 | | SST IMPELLER SHAFT | T08623-02 | 17080 | 1 |
| 24 * | LOCATING PIN | 21154-666 | ---- | 1 | | | | | |

* INDICATES PARTS RECOMMENDED FOR STOCK

† 2 GASKETS REQUIRED WHEN ROTOR OR SLIDE IS THICKER THAN CENTER PLATE.

GORMAN-RUPP PUMPS



PARTS LIST
LK05268 Group Grind

| ITEM NO. | PART NAME | PART NUMBER | MAT'L CODE | QTY |
|----------|--------------|---------------|------------|-----|
| 1 | CENTER PLATE | NOT AVAILABLE | --- | 1 |
| 2 | ROTOR | NOT AVAILABLE | --- | 1 |
| 3 | SLIDE | NOT AVAILABLE | --- | 1 |

NOTE: THE GROUP GRIND MUST BE REPLACED AS A COMPLETE UNIT: INDIVIDUAL PIECE PARTS ARE NOT SOLD SEPARATELY.

GORMAN-RUPP PUMPS

**For U.S. and International Warranty Information,
Please Visit www.grpumps.com/warranty
or call:**

**U.S.: 419-755-1280
International: +1-419-755-1352**

**For Canadian Warranty Information,
Please Visit www.grcanada.com/warranty
or call:**

519-631-2870