

Use With: OM—03989
MR—03991

PUBLICATION NUMBER PL—03992—04
October 21, 2015
Rev. B — 05/7/25



PUMP MODEL RD3A32—BAR

**MANUAL
PART 2 of 3**

**PARTS
LIST
WITH
PERFORMANCE CURVE**

GORMAN-RUPP PUMPS

www.grpumps.com

©2015 Gorman-Rupp Pumps

Printed in U.S.A.

Register your new
Gorman-Rupp pump online at
www.grpumps.com

Valid serial number and e-mail address required.

RECORD YOUR PUMP MODEL AND SERIAL NUMBER

Please record your pump model and serial number in the spaces provided below. Your Gorman-Rupp distributor needs this information when you require parts or service.

Pump Model: _____
Serial Number: _____

PERFORMANCE CURVE – SECTION A

RECORDING MODEL AND SERIAL NUMBERS

Please record the pump model and serial number in the spaces provided below and in the separate Installation/Operation Manual accompanying your pump. Your Gorman-Rupp distributor needs this information when you require parts or service.

Pump Model: _____

Serial Number: _____

WARRANTY INFORMATION

The pump warranty is provided as part of Gorman-Rupp's support program for customers who operate and maintain their equipment as described in this manual and other accompanying literature. Please note that should the equipment be abused or modified to change its performance beyond the original factory specifications, the warranty will become void and any claim will be denied. For warranty information, please visit www.grpumps.com/warranty.

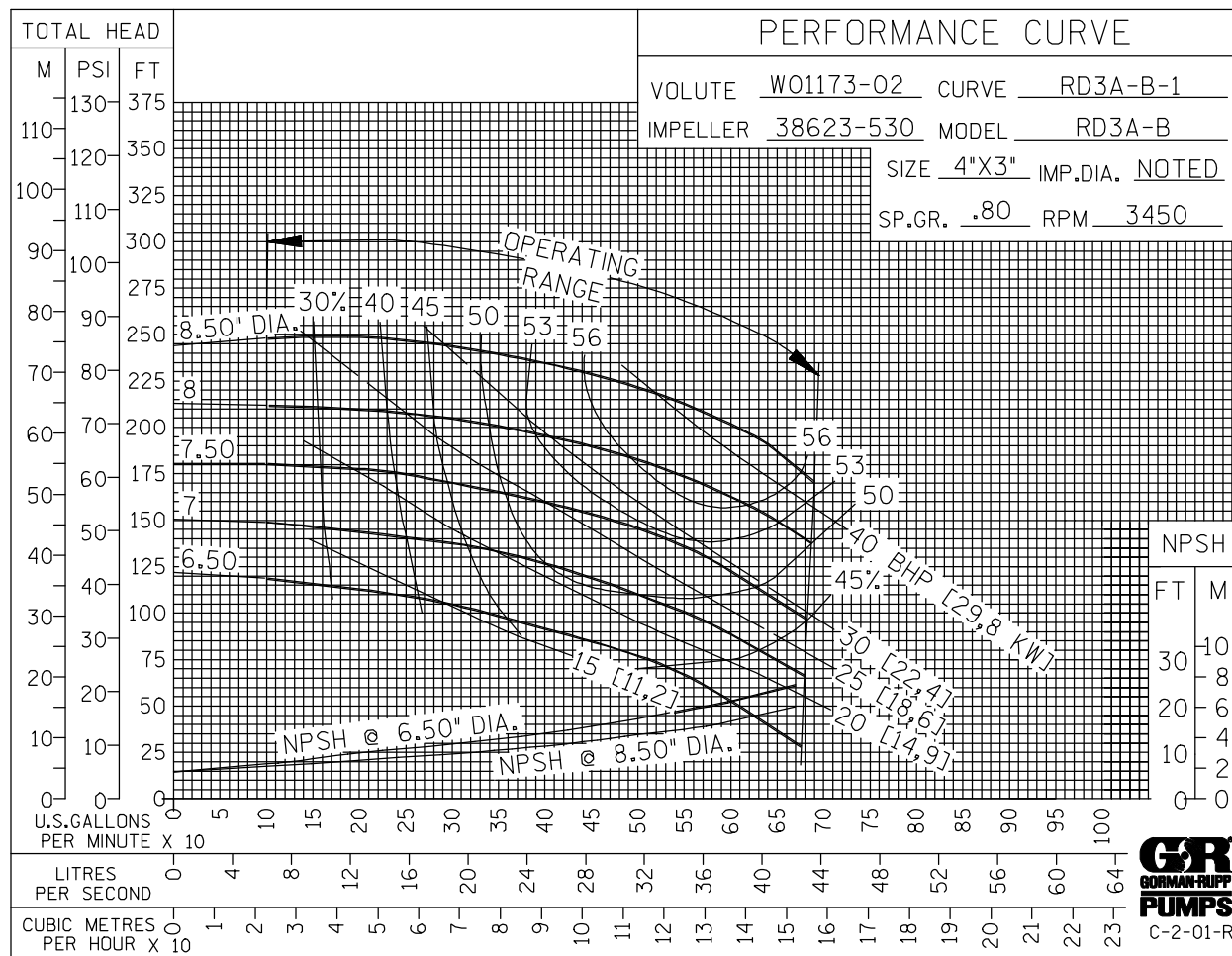
PERFORMANCE CURVE

The performance curve on the following page is based on 70°F (21°C) clear water at sea level, corrected to 0.80 specific gravity, with minimum suction lift. Since pump installations are seldom identical, your performance may be different due to such factors as viscosity, specific gravity, elevation, temperature, and impeller trim.

If your pump serial number is followed by an "N", your pump is **NOT** a standard production model. Contact the Gorman-Rupp Company to verify performance or part numbers.



Pump speed and operating condition points must be within the continuous performance range shown on the curve(s).

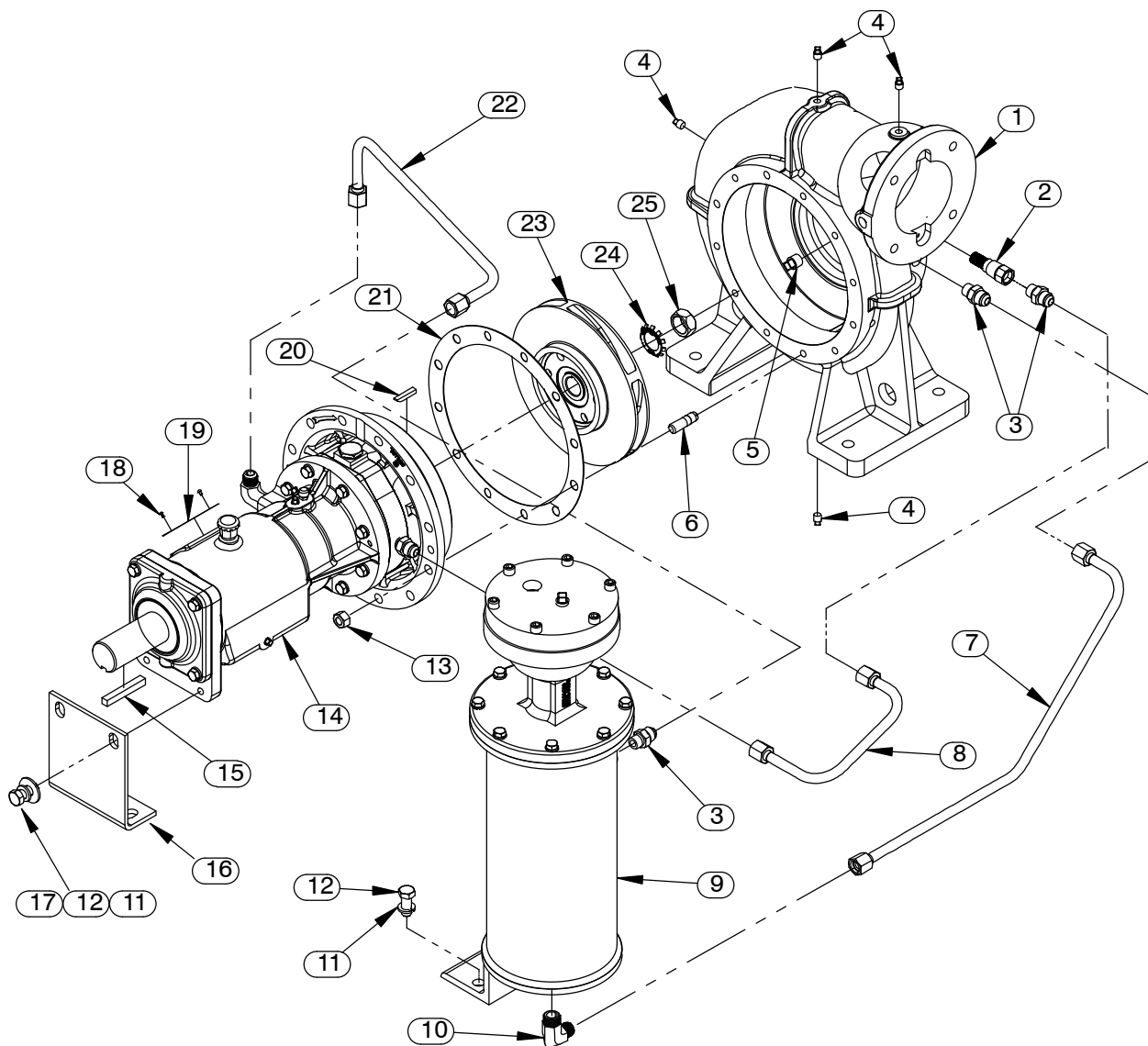


Performance Curve – Model RD3A32–BAR

This Page Intentionally Blank

RD3A32—BAR

S/N 1629432 Up
PUMP ISSUE 4



GORMAN-RUPP PUMPS

www.grpumps.com

©2015 Gorman-Rupp Pumps

Printed in U.S.A.

RD3A32—BAR

S/N 1629432 Up
PUMP ISSUE 4

PARTS LIST Pump Model RD3A32—BAR

If your pump serial number is followed by an "N", your pump is **NOT** a standard production model. Contact the Gorman-Rupp Company to verify part numbers.

ITEM NO.	PART NAME	PART NUMBER	QTY	ITEM NO.	PART NAME	PART NUMBER	QTY
1	PUMP CASING	SEE NOTE BELOW	1	20	KEY	K79329—23 15990	1
2	STRAINER	26841—094	1	21 *	BODY GASKET	R12531 20000	1
3	CONNECTOR	25812—214	3	22	DISCHARGE TUBE ASSY	46335—097	1
4	PIPE PLUG	P02 15079	4	23 *	IMPELLER	38623—530 13048	1
5	PIPE PLUG	P06 15079	1	24	LOCK WASHER	23962—519	1
6	STUD	C0807 15991	12	25	IMPELLER NUT	K75776 15111	1
7	RETURN TUBE ASSY	46335—086	1	NOT SHOWN:			
8	SUCTION TUBE ASSY	46335—076	1		LUBRICATION DECAL	38816—081	1
9 ●	AIR RELEASE VALVE ASSY	GRP33—08B	1		DISCHARGE STICKER	6588BJ	1
10	MALE ELBOW	25812—011	1		SUCTION STICKER	6588AG	1
11	LOCK WASHER	J08 15991	4		G-R DECAL	GR—03	1
12	HEX HEAD CAP SCREW	B0805 15991	4		INSTRUCTION TAG	38817—011	1
13	HEX NUT	D08 15991	12		BEARING TAG	6588ABB	1
14	BEARING HOUSING ASSY	44143—105	1		ROTATION DECAL	2613M	1
15 *	KEY	N0611 15990	1		CHECK VLV BODY GSKT	11589GA 18000	1
16	SUPPORT BRG HOUSING	R12852—01 15990	1		SUCTION COVER GSKT	N14147 18000	1
17	FLAT WASHER	K08 15991	2	OPTIONAL:			
18	DRIVE SCREW	BM#04—03 17000	2		COMPANION FLANGES (SUCTION AND DISCHARGE)		
19	NAME PLATE	2613DZ 13990	1		—COMPANION FLG KIT	K33850	1

* INDICATES PARTS RECOMMENDED FOR STOCK

† ALL ROTO-PRIME™ IMPELLERS ARE TRIMMED.

● SEE ACCOMPANYING LITERATURE FOR INDIVIDUAL PARTS, MAINTENANCE AND REPAIR.

☞ INCLUDED WITH REPAIR 46474—351 1
PUMP CASING ASSY

GORMAN-RUPP PUMPS

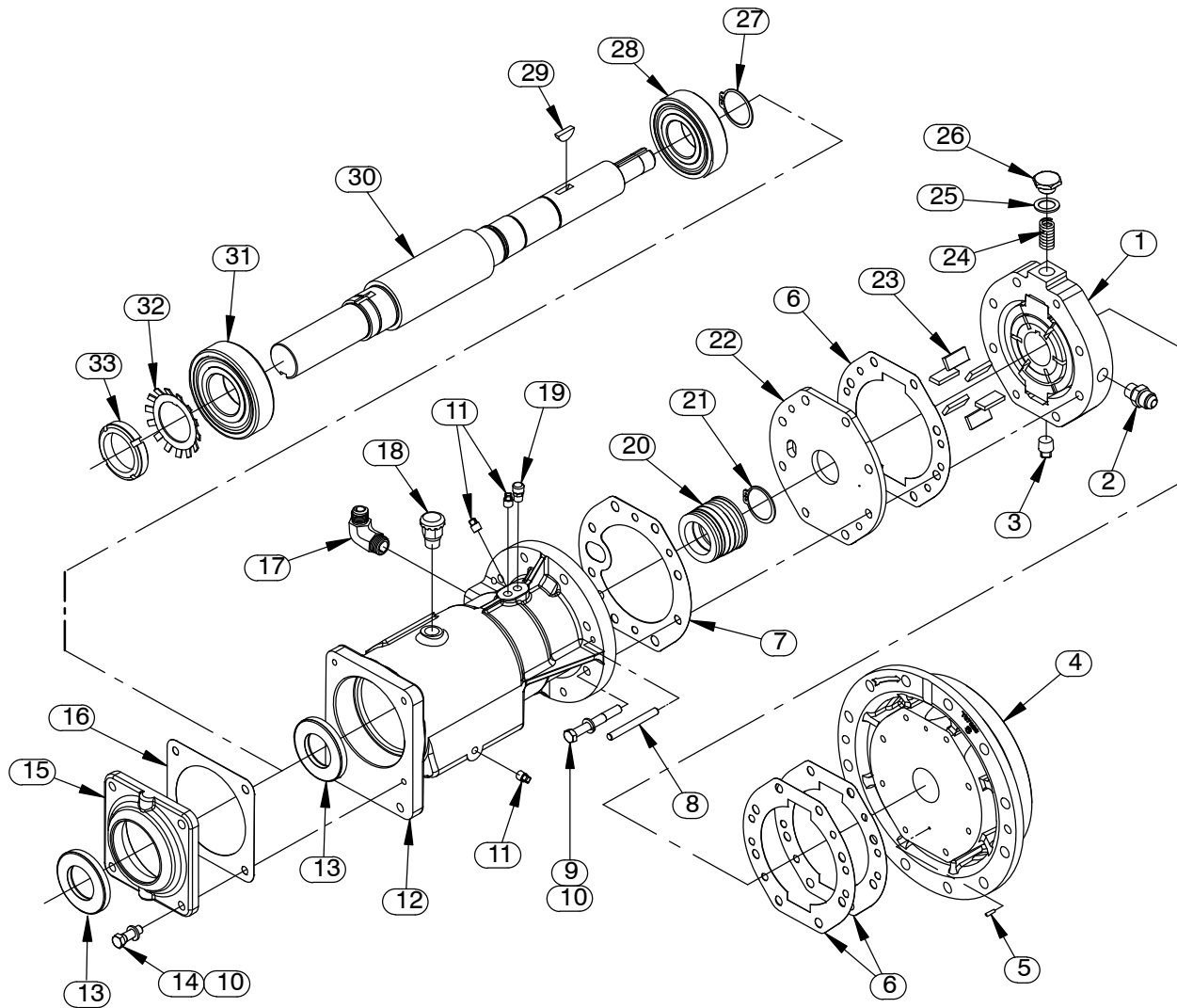
www.grpumps.com

©2015 Gorman-Rupp Pumps

Printed in U.S.A.

RD3A32-BAR

S/N 1629432 Up
PUMP ISSUE 4



GORMAN-RUPP PUMPS

www.grpumps.com

©2015 Gorman-Rupp Pumps

Printed in U.S.A.

S/N 1629432 Up
PUMP ISSUE 4

PARTS LIST

Bearing Housing Assembly

ITEM NO.	PART NAME	PART NUMBER	QTY	ITEM NO.	PART NAME	PART NUMBER	QTY
1	GROUP GRIND	LK05418	1	22	SPACER PLATE	N14129—02 11010	1
2	CONNECTOR	25812—214	1	23 *	PUMP BLADE	K79300—22	6
3	PIPE PLUG	P06 15079	1	24	PRS REGULATING SPRING	K76301	1
4	BODY COVER	T07826—04 10140	1	25 *	GASKET	38681—021 19060	1
5 *	ROLL PIN	21154—666	1	26	SPRING CAP	K68064 15991	1
† 6 *	CENTER PLATE GASKET	N14145 19210	3	27	RETAINING RING	24124—245	1
7 *	SPACER PLATE GASKET	N14144 18000	1	28 *	BALL BEARING	23282—010	1
8	DOWEL PIN	21133—073	2	29 *	WOODRUFF KEY	K61559 15990	1
9	HEX HEAD CAP SCREW	B0612 15991	8	30 *	IMPELLER SHAFT	T08467—02 15010	1
10	LOCK WASHER	J06 15991	12	31 *	BALL BEARING	23282—011	1
11	PIPE PLUG	P02 15079	3	32	BRG LOCKWASHER	23962—511	1
12	BEARING HOUSING	W01172—03 11010	1	33	BRG LOCKNUT	23962—011	1
13 *	OIL SEAL	25227—240	2	OPTIONAL:			
14	HEX HEAD CAP SCREW	B0605 15991	4		SST IMPELLER SHAFT	T08467—02 17080	1
15	BEARING HOUSING CAP	R12770—02 10010	1		TEFLON SEAL ASSY	25271—761	1
16 *	BEARING CAP GASKET	N18938—01 18000	1		OIL LUBE BEARING		
17	MALE ELBOW	25812—011	1		HOUSING ASSEMBLY	44143—110	1
18	AIR VENT	S1703	1		—INBOARD BEARING	S1088	1
19	AIR VENT	S2162	1		—OUTBOARD BEARING	S1077	1
20 *	MECH SEAL 1—5/8	25271—921	1		—OIL CUP	26713—051	1
21	RETAINING RING	24124—243	1				

* INDICATES PARTS RECOMMENDED FOR STOCK

† 2 GASKETS REQUIRED ON ONE FACE ONLY WHEN ROTOR OR SLIDE IS THICKER THAN CENTER PLATE.

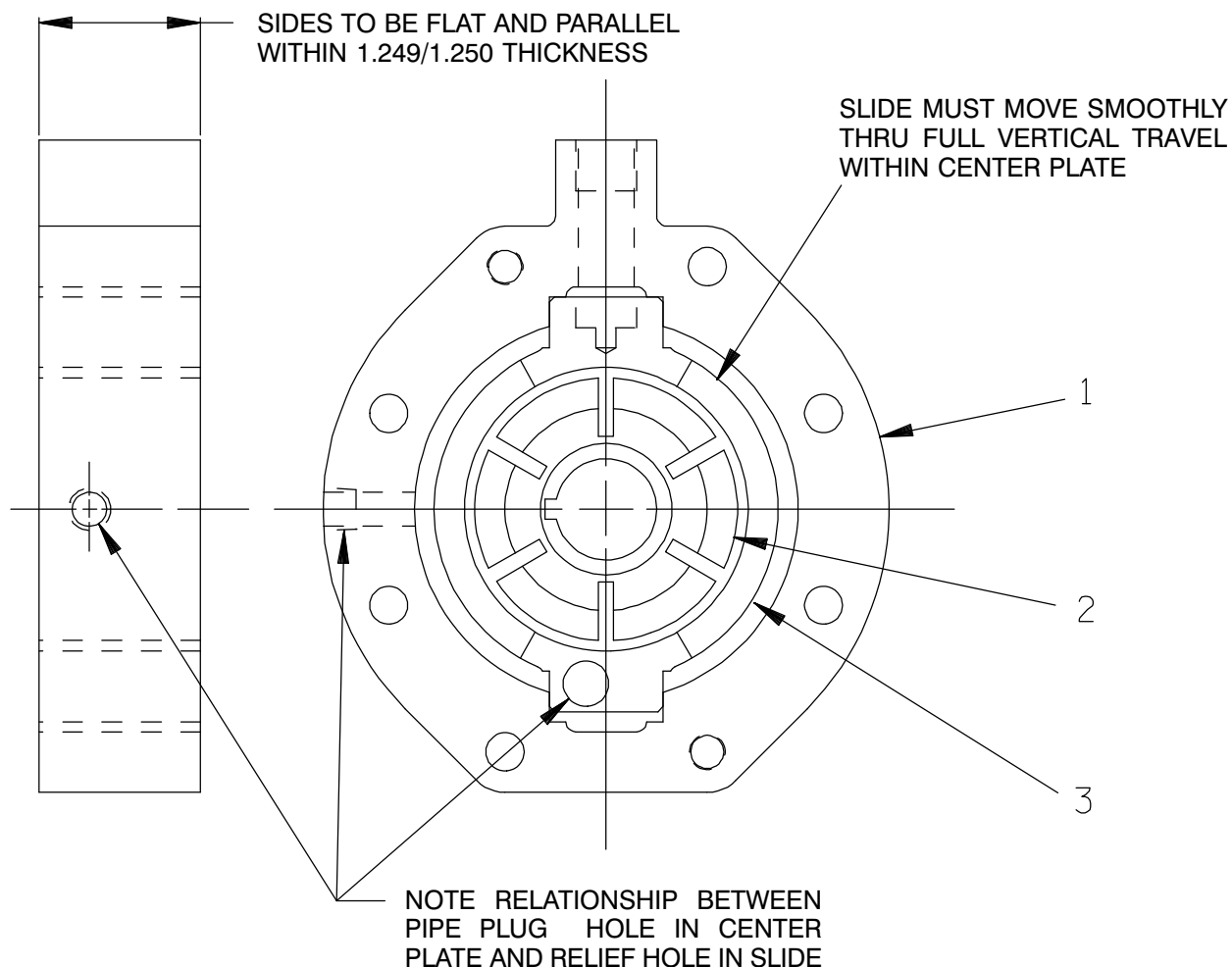
● ALL OTHER COMPONENTS SAME AS STANDARD BEARING HOUSING ASSEMBLY.

GORMAN-RUPP PUMPS

www.grpumps.com

RD3A32—BAR

S/N 1629432 Up
PUMP ISSUE 4



PARTS LIST LK05418 Group Grind

ITEM NO.	PART NAME	PART NUMBER	QTY
1	CENTER PLATE	NOT AVAILABLE	1
2	ROTOR	NOT AVAILABLE	1
3	SLIDE	NOT AVAILABLE	1

NOTE: THE GROUP GRIND MUST BE REPLACED AS A COMPLETE UNIT: INDIVIDUAL PIECE PARTS ARE NOT SOLD SEPARATELY.

GORMAN-RUPP PUMPS

www.grpumps.com

©2015 Gorman-Rupp Pumps

Printed in U.S.A.

**For Warranty Information, Please Visit
www.grpumps.com/warranty
or call:
U.S.: 419-755-1280
Canada: 519-631-2870
International: +1-419-755-1352**

GORMAN-RUPP PUMPS