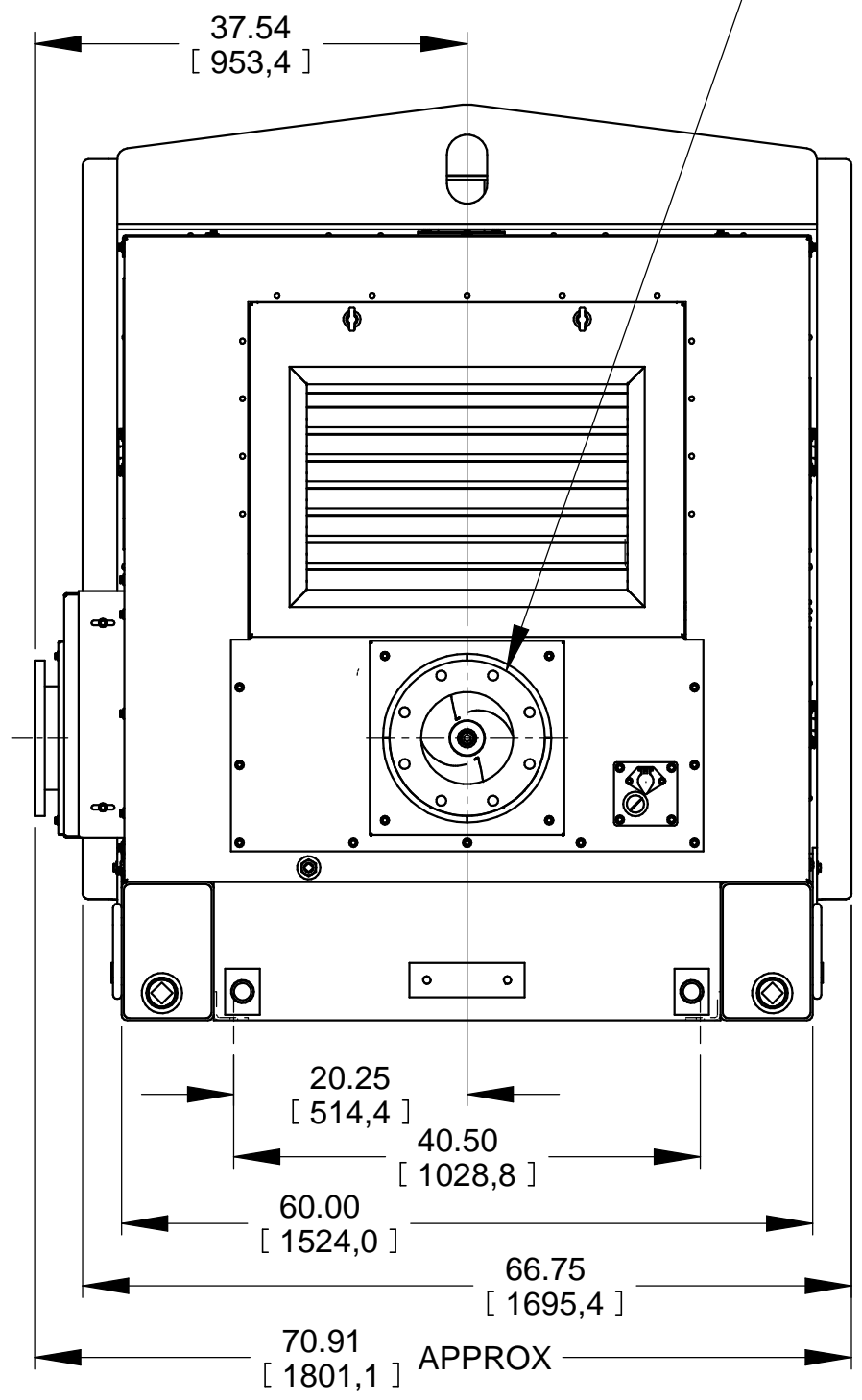
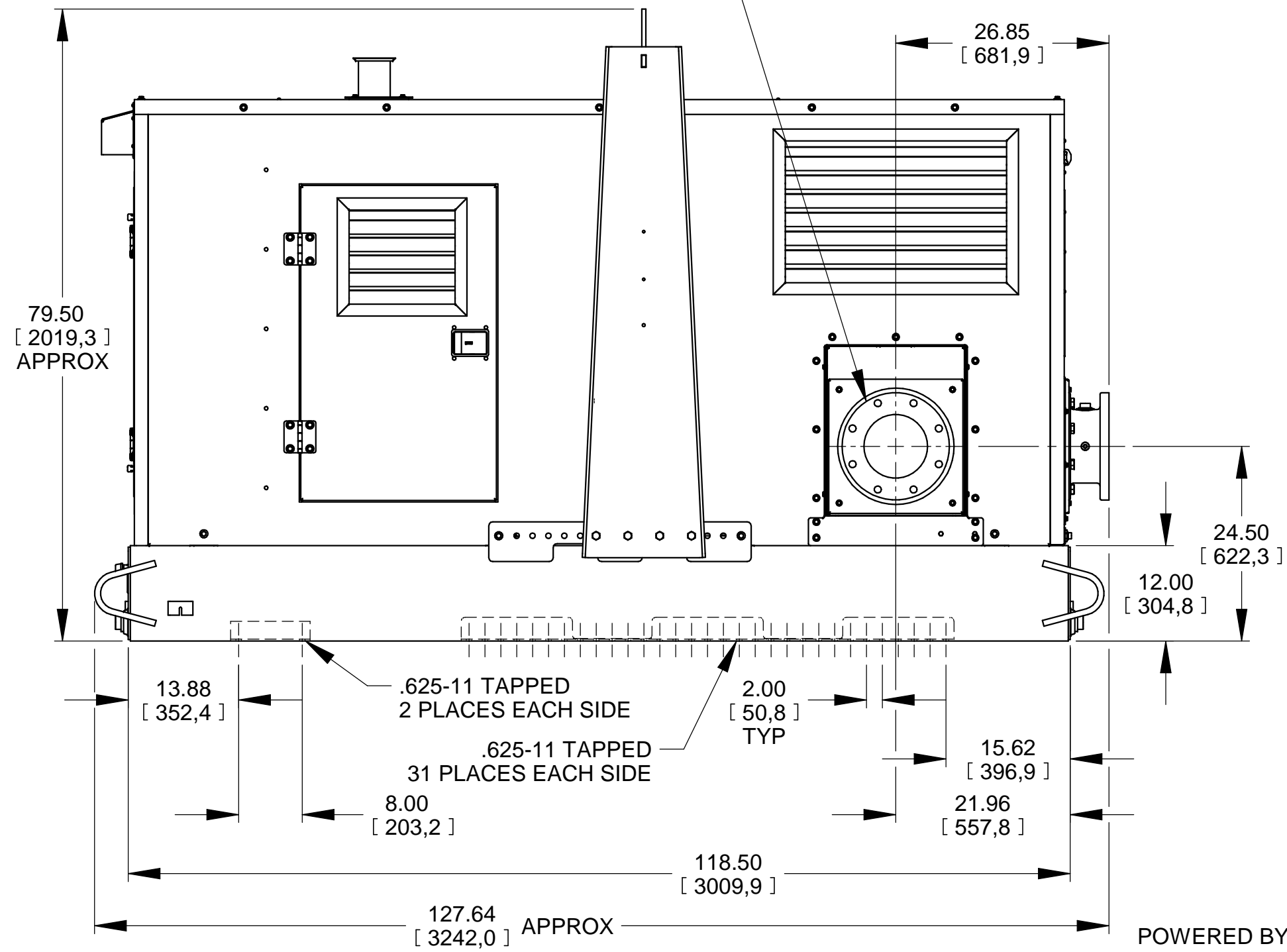


DISCHARGE:
8.00 NOMINAL WITH 8 HOLES
.88/[22,4] DIA EQUALLY SPACED
ON A 11.75/[298,5] DIA BC

SUCTION:
8.00 NOMINAL WITH 8 HOLES
.88/[22,4] DIA EQUALLY SPACED
ON A 11.75/[298,5] DIA



POWERED BY: JOHN DEERE 4045H FT4 DIESEL ENGINE

DIMENSIONS:
INCHES
[MILLIMETERS]

	THE GORMAN-RUPP CO. MANSFIELD, OHIO ST. THOMAS, ONTARIO		DRAWN BY CAG	SCALE 1/16	MODEL PA8ED-4045H FT4-ESP
	DATE 5-10-21	REVISED -----	OUTLINE NUMBER 19754		