

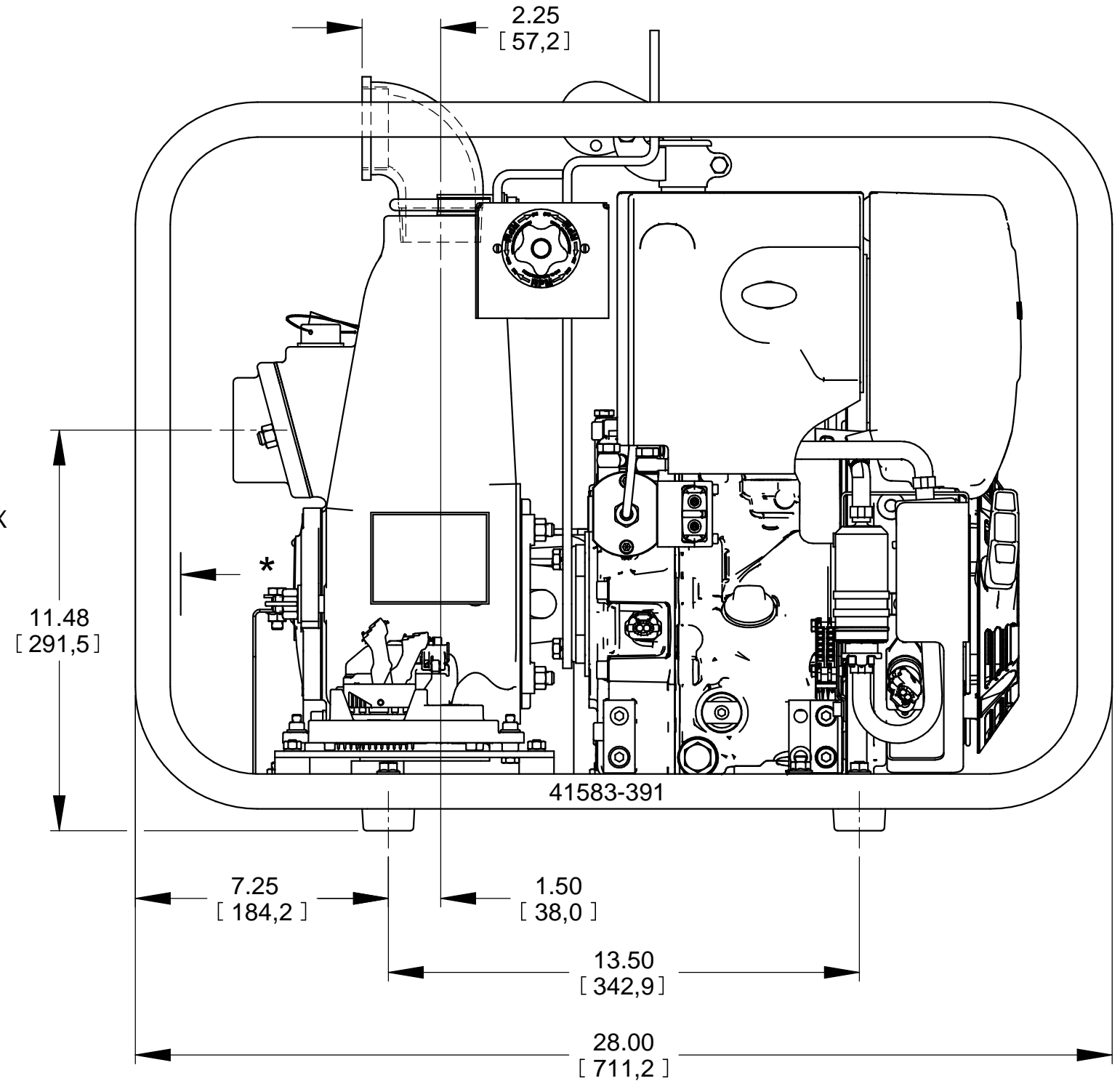
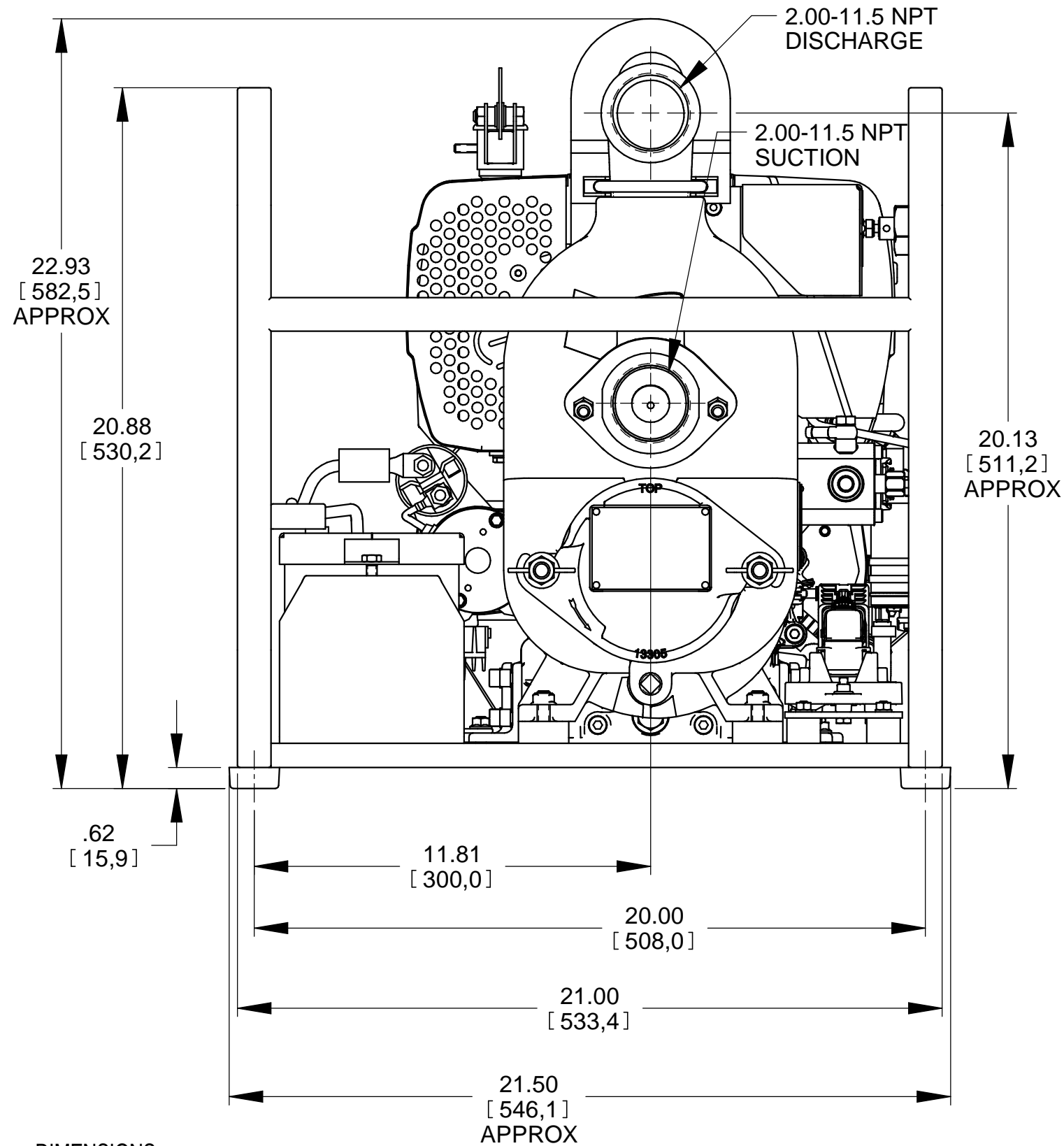
X916-120

* 18.00/[457,2] RECOMMENDED FOR REMOVAL OF BACK COVER PLATE
5.75/[146,0] REQUIRED FOR REMOVAL OF BACK COVER PLATE

B

19735

SHEET
1 OF 1



POWERED BY HATZ 1B30E-X FT4 DIESEL ENGINE

DIMENSIONS:
INCHES
[MILLIMETERS]



THE GORMAN-RUPP CO.
MANSFIELD, OHIO ST. THOMAS, ONTARIO

DRAWN BY
VFR
DATE
8/14/20

SCALE
1/4
REVISED

MODEL
12D1-1B30E FT4 S/G
OUTLINE NUMBER
19735