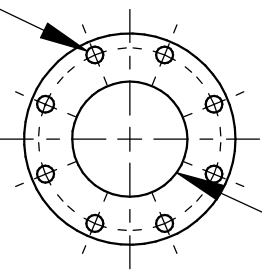


.88/[22,2] DIA, 8 HOLES
EQUALLY SPACED ON
A 9.50/[241,3] DIA BC

6" NOMINAL
DISCHARGE

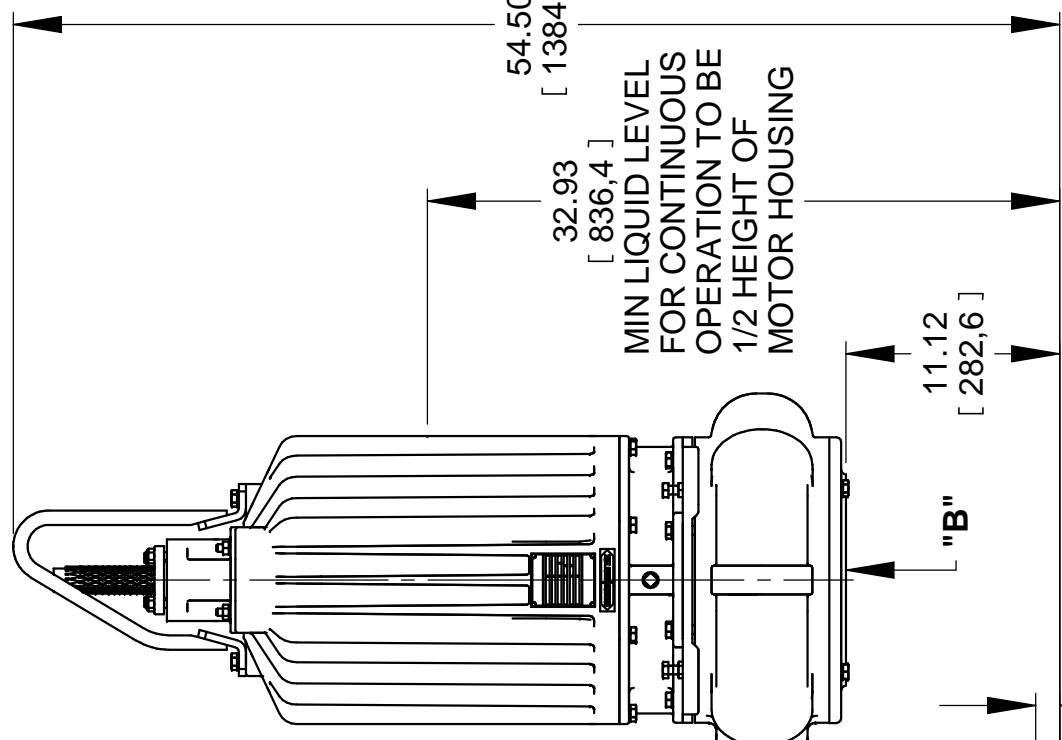


.88/[22,2] DIA, 8 HOLES
EQUALLY SPACED ON
A 9.50/[241,3] DIA BC

6" NOMINAL
DISCHARGE

VIEW "A"

ALTERNATIVE SHORT BASE ELBOW



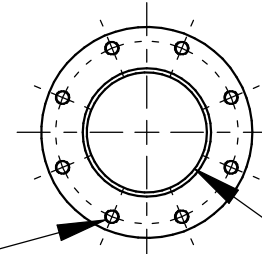
MIN LIQUID LEVEL
FOR CONTINUOUS
OPERATION TO BE
1/2 HEIGHT OF
MOTOR HOUSING

"B"

"A"

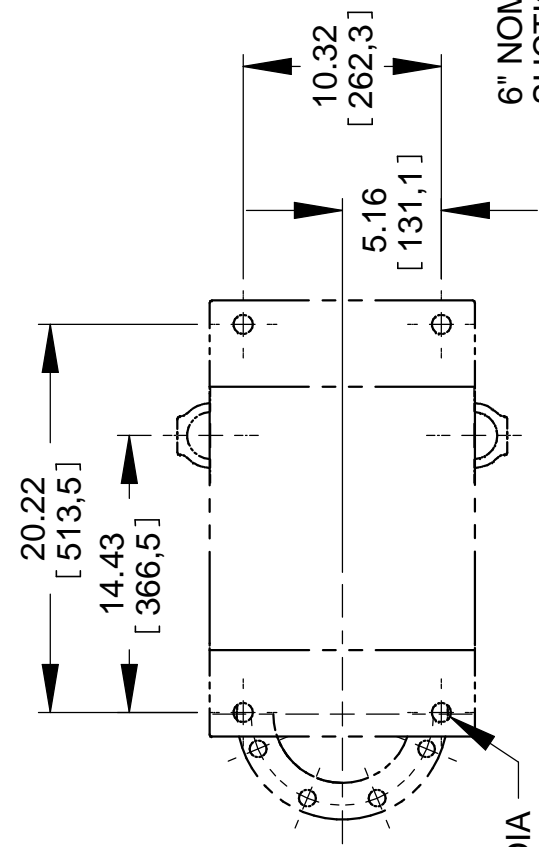
2" NOM PIPE SIZE
(GUIDE RAILS)
(AS SUPPLIED BY OTHERS)

.750-10 UNC-2B
8 TAPPED HOLES
EQUALLY SPACED ON
A 9.50/[241,3] DIA BC



VIEW "B"

6" NOMINAL
SUCTION



1.00/[25,4] DIA
4 HOLES
AS SHOWN

SHOWN WITH OPTIONAL
RAIL KIT AND BASE ELBOW

DIMENSIONS:
INCHES
[MILLIMETERS]



THE GORMAN-RUPP CO.
MANSFIELD, OHIO ST. THOMAS, ONTARIO

DRAWN BY
KMW
DATE
09-04-20

SCALE
1/10
REVISED

MODEL
SFSC6A / SFSC6A-X
OUTLINE NUMBER
19723