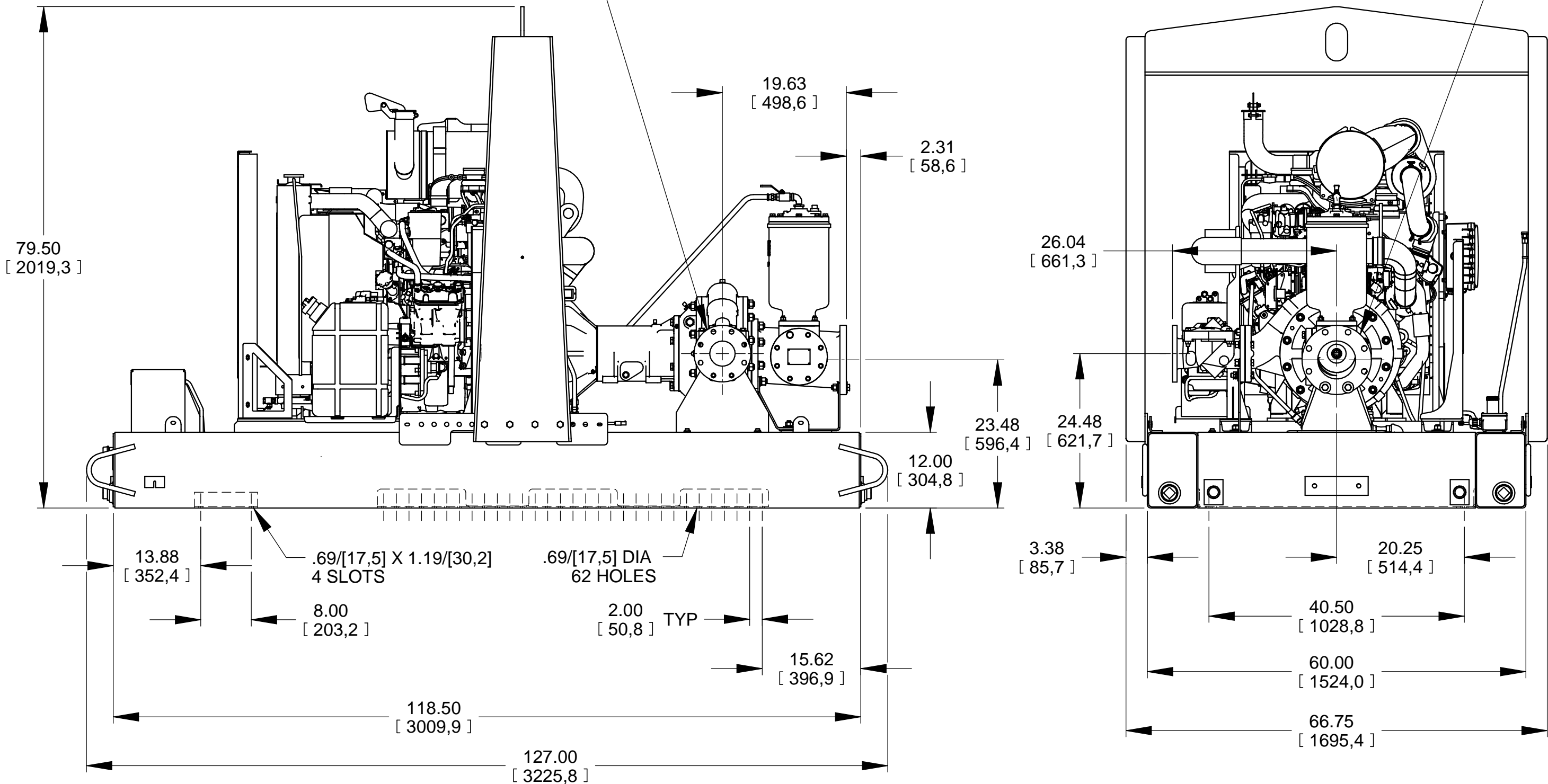


DISCHARGE:
4.00 NOMINAL WITH
8 HOLES .75/[19,0] DIA
EQUALLY SPACED ON A
7.50/[190,5] DIA BC

SUCTION:
6.00 NOMINAL WITH
8 HOLES .88/[22,4] DIA
EQUALLY SPACED ON A
9.50/[241,3] DIA BC



POWERED BY: CATERPILLAR C4.4TA FT4 DIESEL ENGINE

DIMENSIONS:
INCHES
[MILLIMETERS]

| | | | | | |
|--|---|----------------|-------------------------|---------------|---------------------------|
| | THE GORMAN-RUPP CO. MANSFIELD, OHIO ST. THOMAS, ONTARIO | | DRAWN BY CAG | SCALE 1/16 | MODEL PAH4A-C4.4TA FT4 |
| | DATE 11/15/19 | REVISED --- | OUTLINE NUMBER 19621 | | |