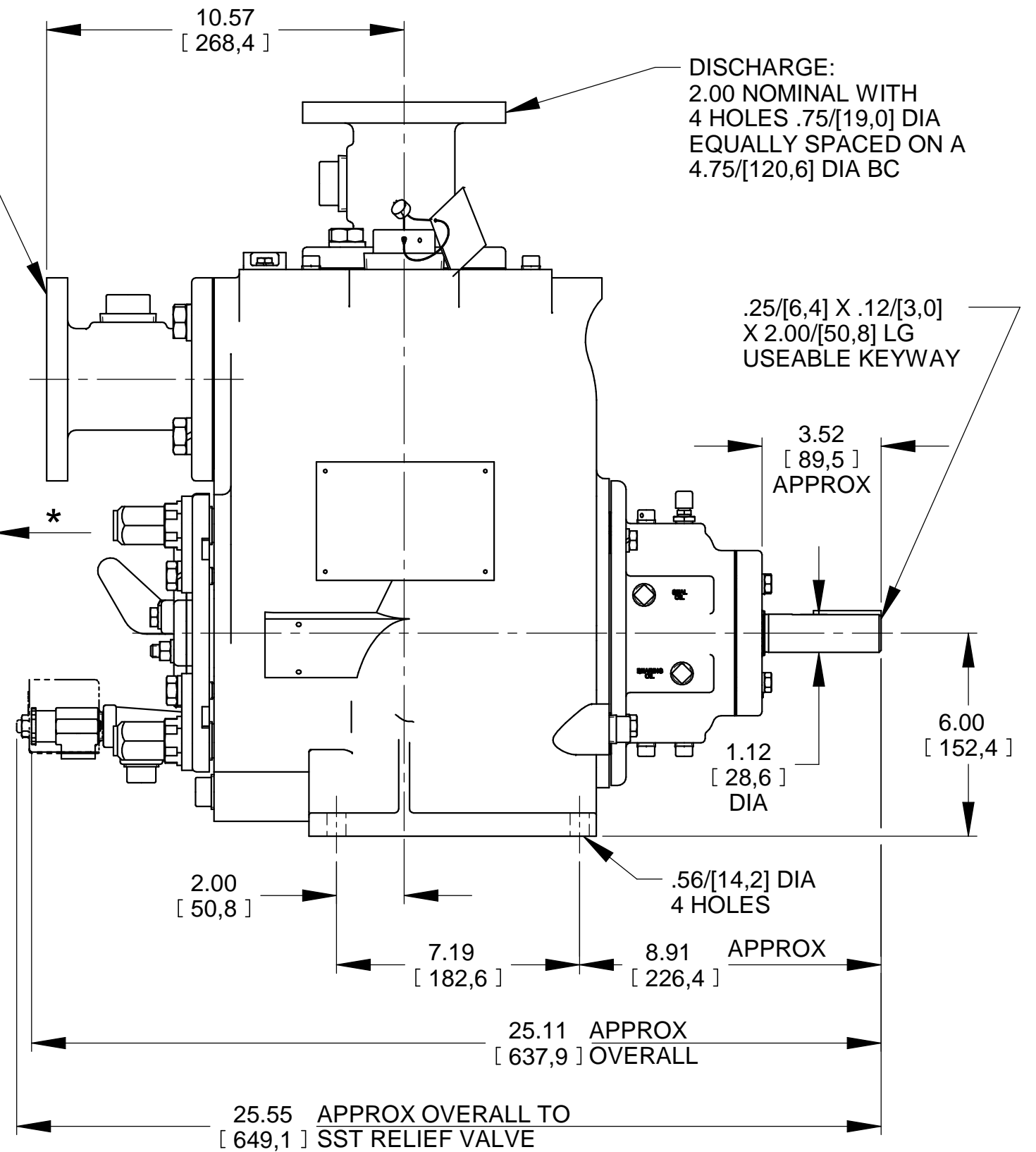


SUCTION:  
2.00 NOMINAL WITH  
4 HOLES .75/[19,0] DIA  
EQUALLY SPACED ON A  
4.75/[120,6] DIA BC



DISCHARGE:  
2.00 NOMINAL WITH  
4 HOLES .75/[19,0] DIA  
EQUALLY SPACED ON A  
4.75/[120,6] DIA BC

\* 18.00/[457,2] RECOMMENDED FOR  
REMOVAL OF BACK COVER PLATE

8.50/[215,9] REQUIRED FOR  
REMOVAL OF BACK COVER PLATE

DIMENSIONS:  
INCHES  
[MILLIMETERS]

	<b>THE GORMAN-RUPP CO.</b> MANSFIELD, OHIO ST. THOMAS, ONTARIO		DRAWN BY CAG	SCALE 1/4	MODEL T2CSC-B /F
	DATE 2/27/19	REVISED -----	OUTLINE NUMBER 19569		