

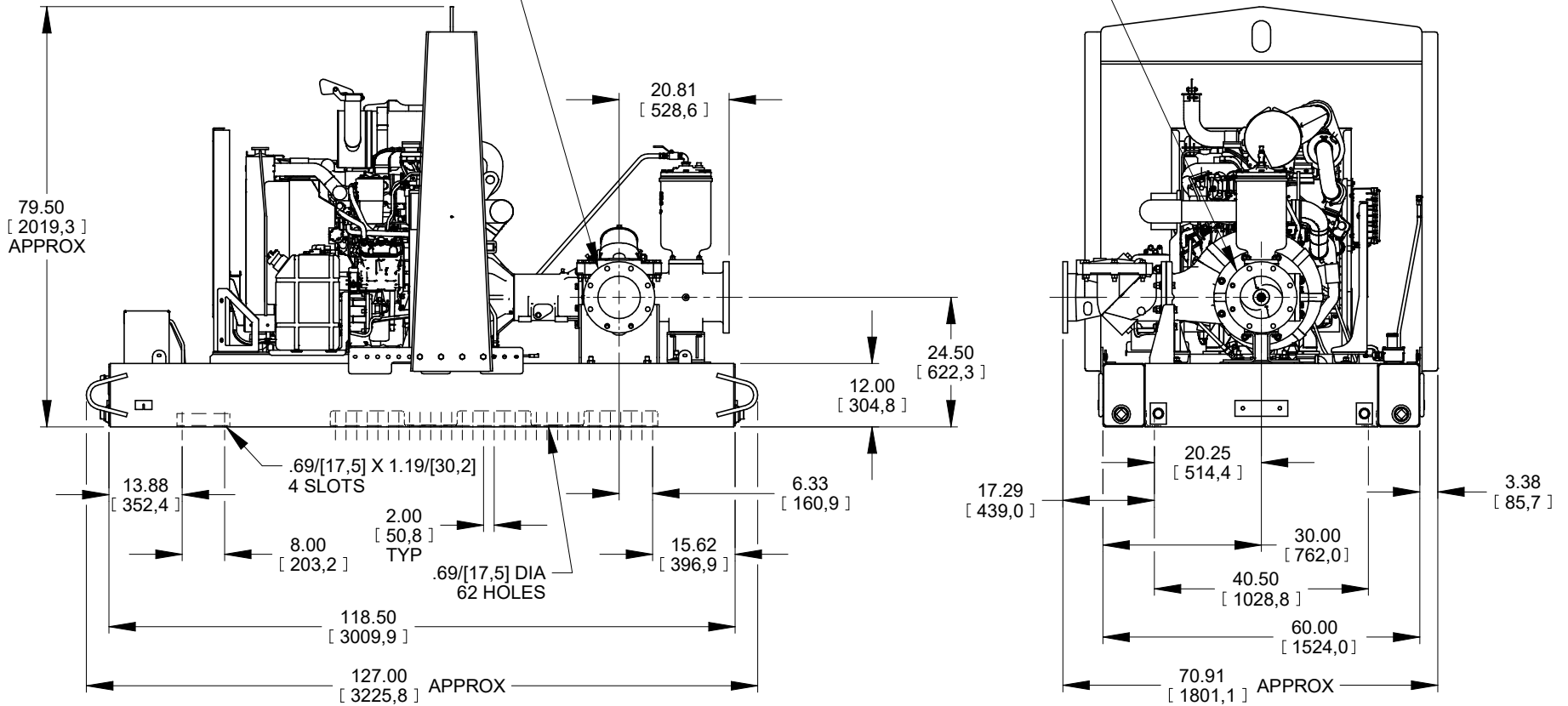
B

19564

SHEET
1 OF 1

DISCHARGE:
8.00 NOMINAL WITH 8 HOLES
.88/[22,4] DIA EQUALLY SPACED
ON A 11.75/[298,5] DIA BC

SUCTION:
8.00 NOMINAL WITH 8 HOLES
.88/[22,4] DIA EQUALLY SPACED
ON A 11.75/[298,5] DIA BC



POWERED BY: CATERPILLAR C4.4TA FT4 DIESEL ENGINE

DIMENSIONS:
INCHES
[MILLIMETERS]



THE GORMAN-RUPP CO.
MANSFIELD, OHIO ST. THOMAS, ONTARIO

DRAWN BY
SAR
DATE
12-26-18

SCALE
1:20
REVISED

MODEL
PA8E-C4.4TA FT4
OUTLINE NUMBER
19564