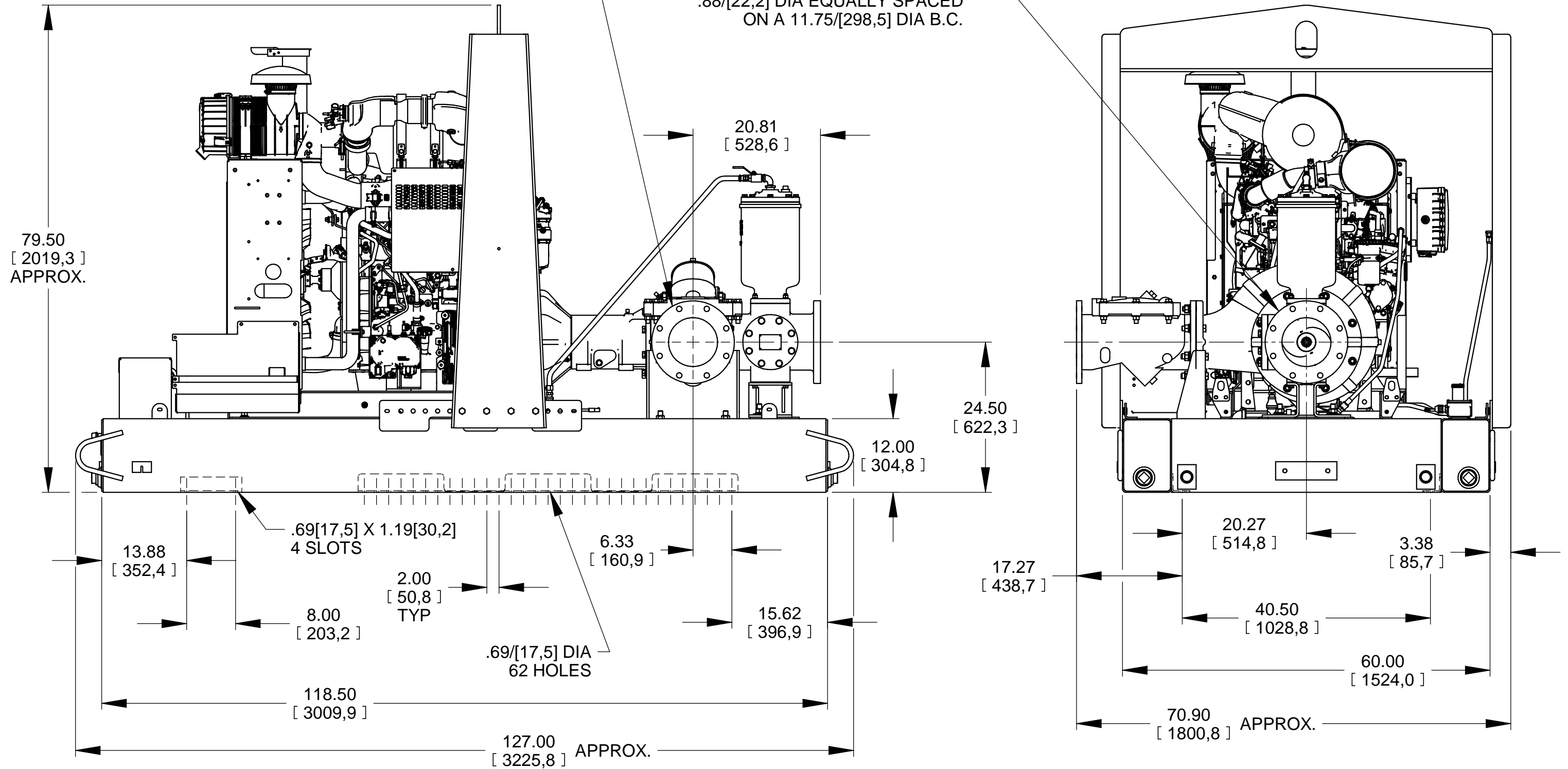


DISCHARGE:
8.00 NOMINAL WITH 8 HOLES
.88/[22,2] DIA EQUALLY SPACED
ON A 11.75/[298,5] DIA B.C.

SUCTION:
8.00 NOMINAL WITH 8 HOLES
.88/[22,2] DIA EQUALLY SPACED
ON A 11.75/[298,5] DIA B.C.



POWERED BY: JOHN DEERE 4045H FT4 DIESEL ENGINE

DIMENSIONS:
INCHES
[MILLIMETERS]



THE GORMAN-RUPP CO.
MANSFIELD, OHIO ST. THOMAS, ONTARIO

DRAWN BY
JPJ
DATE
9-19-17

SCALE
1/16
REVISED

MODEL
PA8E-4045H FT4
OUTLINE NUMBER
19440