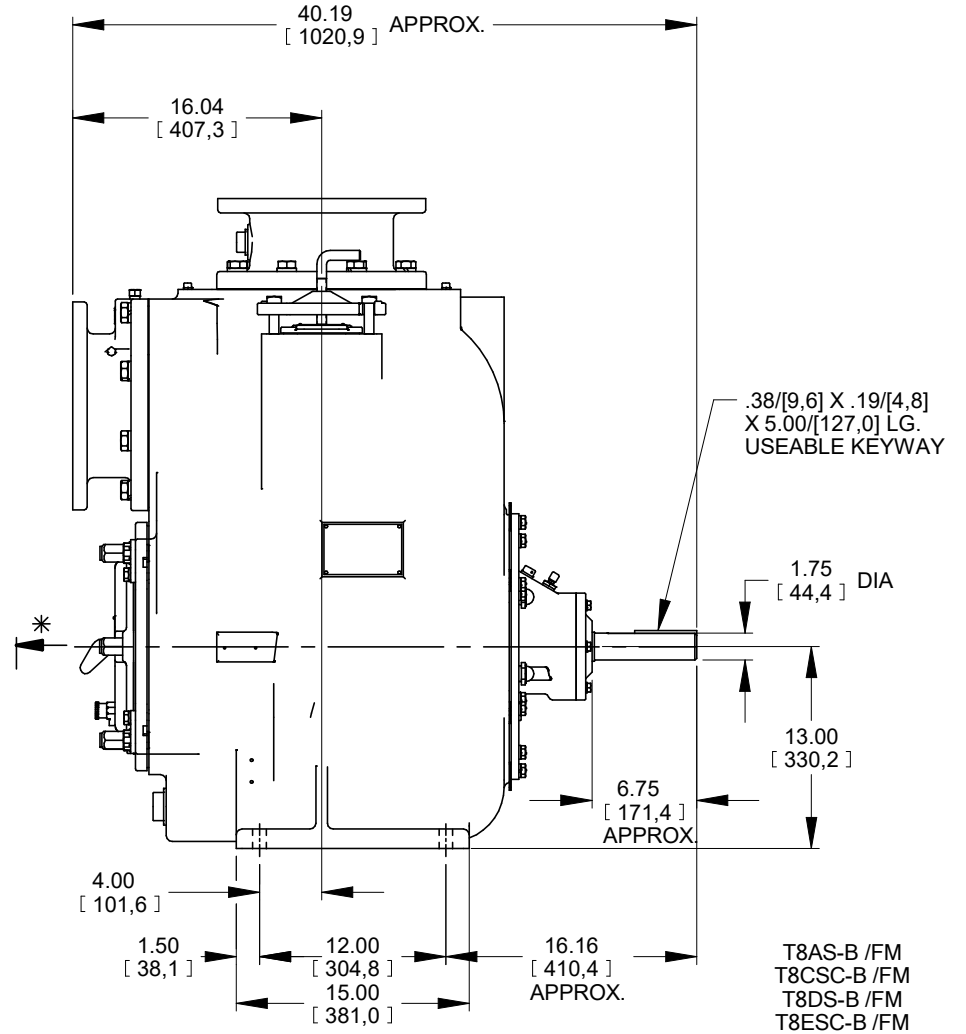
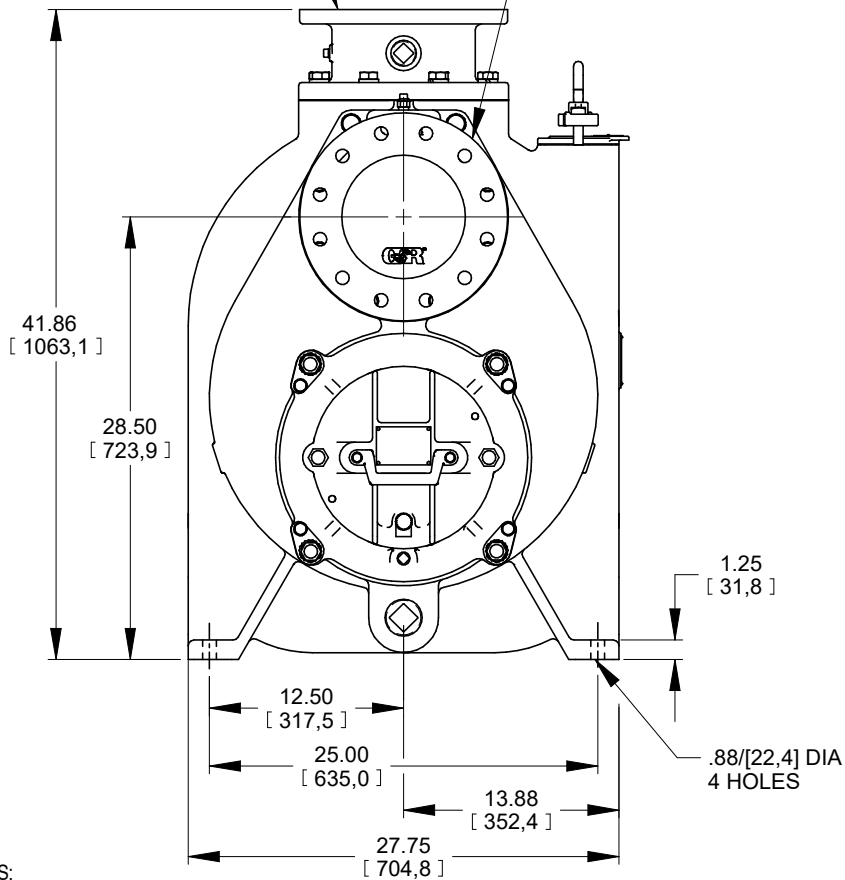


\* 24.00/[609,6] RECOMMENDED FOR REMOVAL OF BACK COVER PLATE  
 T8AS-B /FM / T8CSC-B /FM - 13.00/[330,2] REQUIRED FOR REMOVAL OF BACK COVER PLATE  
 T8DS-B /FM / T8ESC-B /FM - 14.50/[368,3] REQUIRED FOR REMOVAL OF BACK COVER PLATE

METRIC DISCHARGE :  
 200,0 MM WITH (12) 22,0 MM  
 DIA HOLES EQUALLY SPACED  
 ON A 295,0 MM DIA B.C.  
 PER DIN 2527, (PN16)

METRIC SUCTION :  
 200,0 MM WITH (12) 22,0 MM  
 DIA HOLES EQUALLY SPACED  
 ON A 295,0 MM DIA B.C.  
 PER DIN 2527, (PN16)



DIMENSIONS:  
 INCHES  
 [MILLIMETERS]

21-009

	<b>THE GORMAN-RUPP CO.</b> MANSFIELD, OHIO ST. THOMAS, ONTARIO		DRAWN BY SAR	SCALE 1/8	MODEL NOTED
	DATE 11-6-14	REVISED 3-31-21	OUTLINE NUMBER 19036		