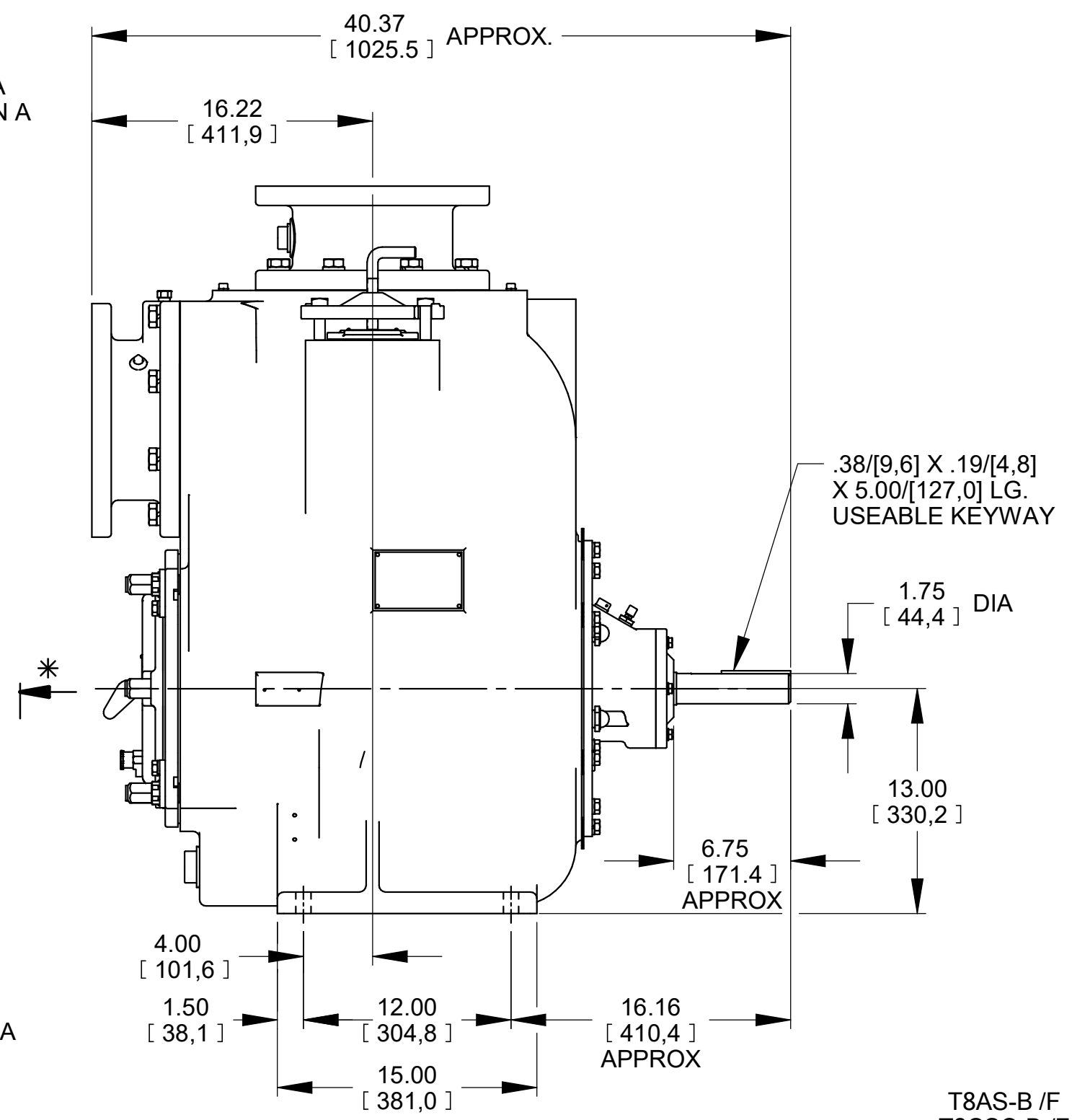
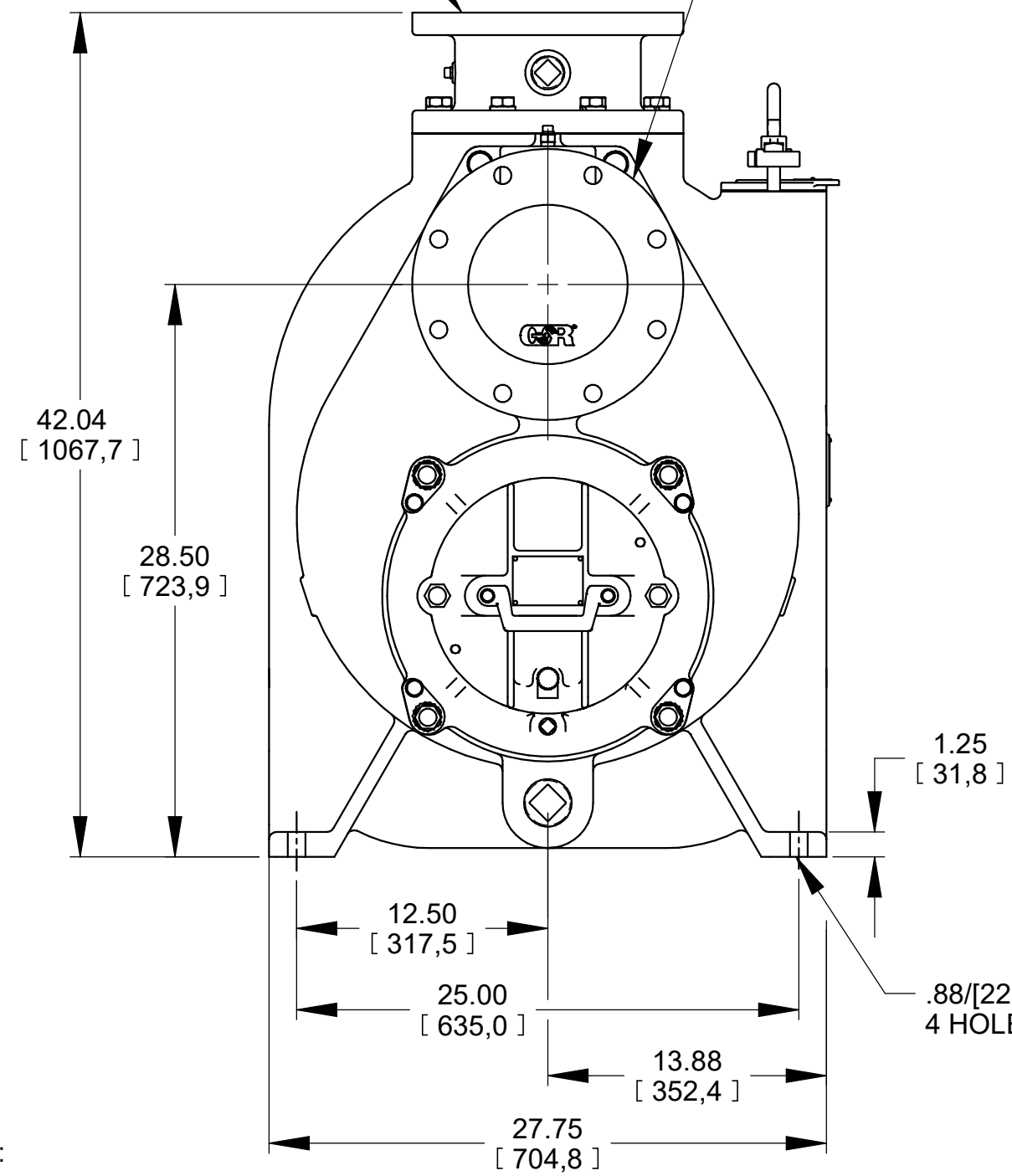


* 24.00/[609,6] RECOMMENDED FOR REMOVAL OF BACK COVER PLATE
 13.00/[330,2] REQUIRED FOR REMOVAL OF BACK COVER PLATE

DISCHARGE :
 8.00 NOMINAL WITH
 8 HOLES .88/[22,4] DIA
 EQUALLY SPACED ON A
 11.75/[298,4] DIA B.C.

SUCTION :
 8.00 NOMINAL WITH
 8 HOLES .88/[22,4] DIA
 EQUALLY SPACED ON A
 11.75/[298,4] DIA B.C.



DIMENSIONS:
 INCHES
 [MILLIMETERS]

T8AS-B /F
 T8CSC-B /F

19-004

	THE GORMAN-RUPP CO. MANSFIELD, OHIO ST. THOMAS, ONTARIO		DRAWN BY SAR	SCALE 1/8	MODEL NOTED
	DATE 11-6-14	REVISED 12-31-19	OUTLINE NUMBER 19035		