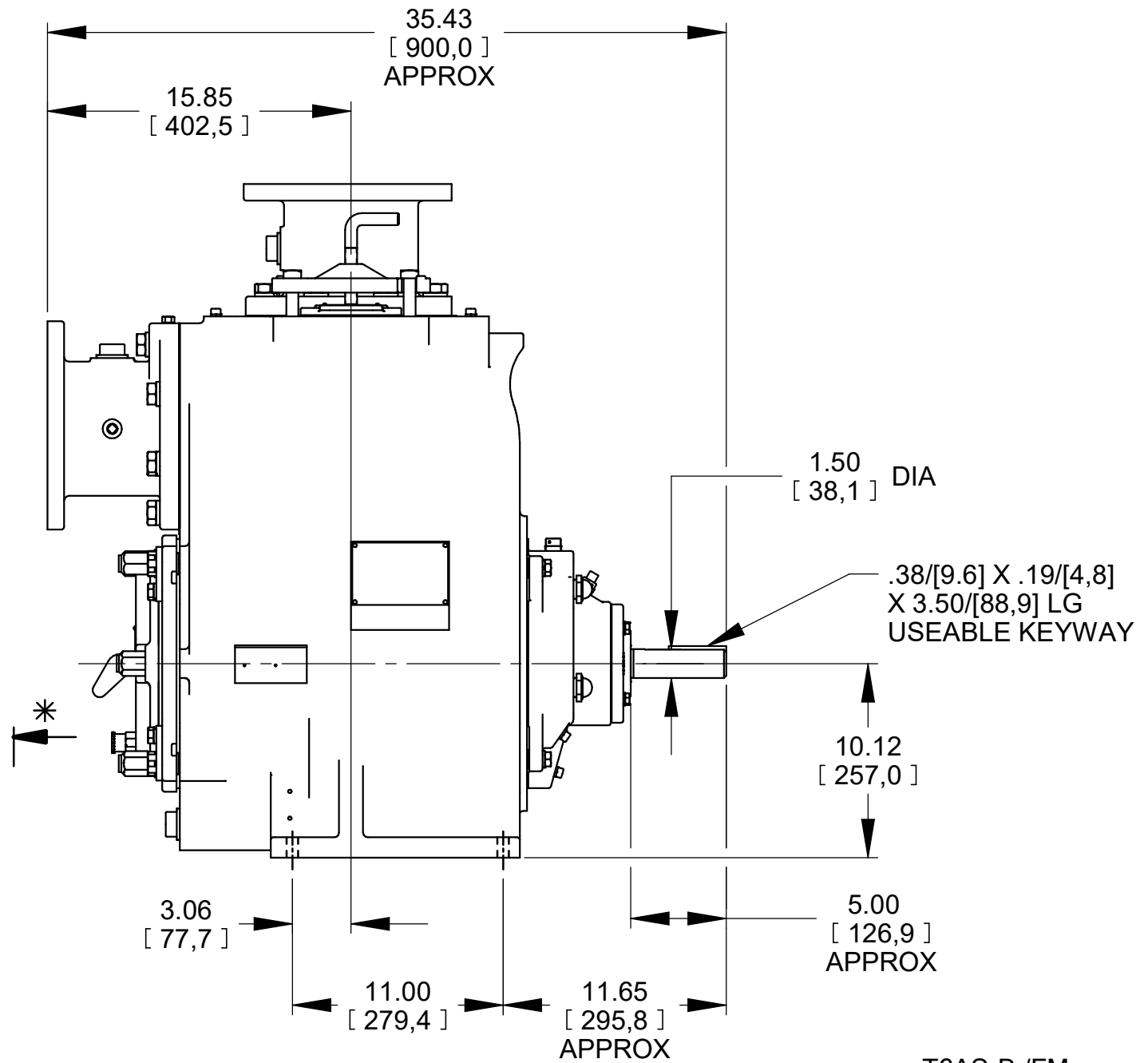
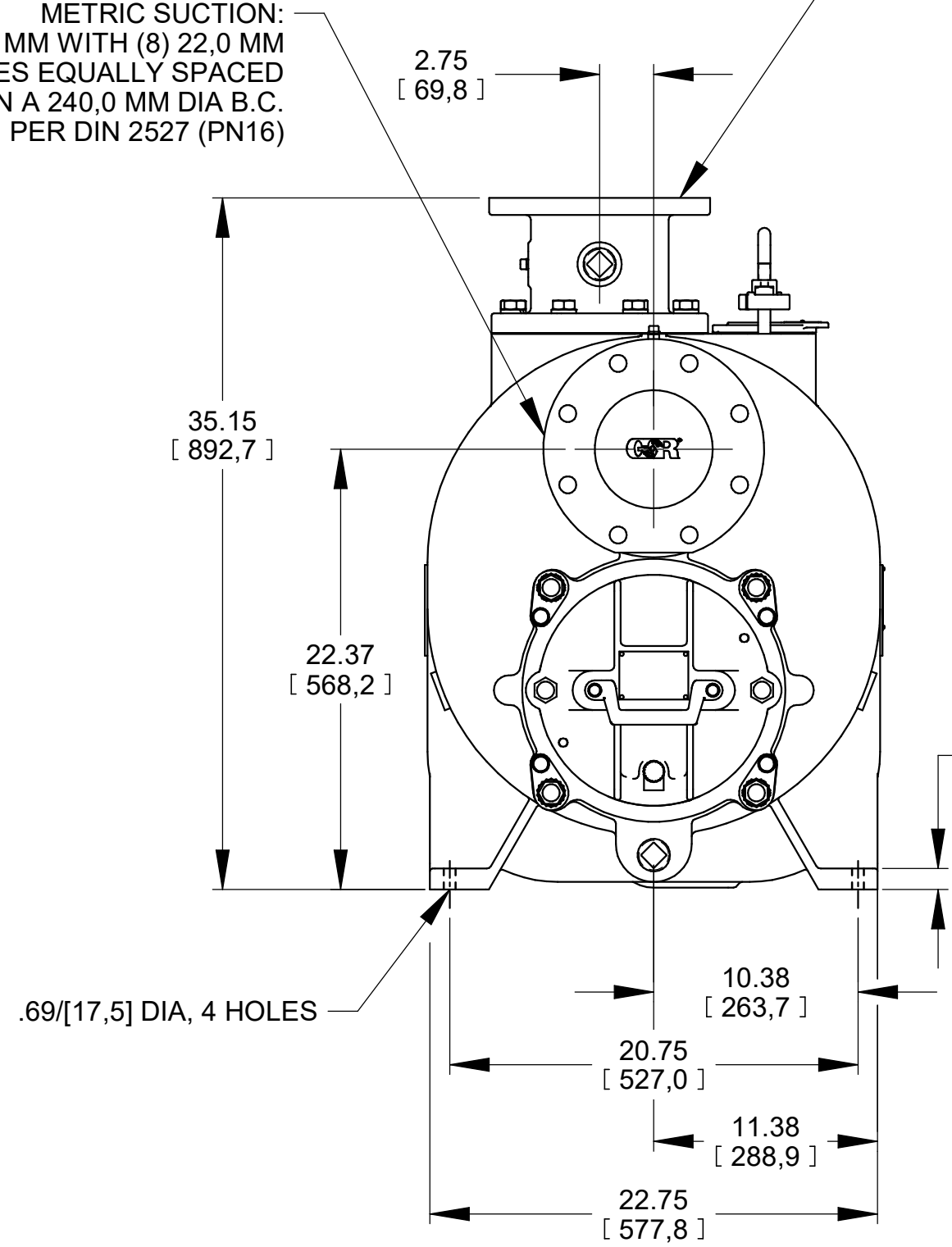


* 18.00/[457,2] RECOMMENDED FOR REMOVAL OF BACK COVER PLATE
 T6AS-B /FM / T6CSC-B /FM - 11.00/[279,4] REQUIRED FOR REMOVAL OF BACK COVER PLATE
 T6BS-B /FM - 12.00/[304,8] REQUIRED FOR REMOVAL OF BACK COVER PLATE

METRIC SUCTION:
 150,0 MM WITH (8) 22,0 MM
 DIA HOLES EQUALLY SPACED
 ON A 240,0 MM DIA B.C.
 PER DIN 2527 (PN16)

METRIC DISCHARGE:
 150,0 MM WITH (8) 22,0 MM
 DIA HOLES EQUALLY SPACED
 ON A 240,0 MM DIA B.C.
 PER DIN 2527 (PN16)



T6AS-B /FM
 T6BS-B /FM
 T6CSC-B /FM

DIMENSIONS:
 INCHES
 [MILLIMETERS]

19-004

	THE GORMAN-RUPP CO. MANSFIELD, OHIO ST. THOMAS, ONTARIO		DRAWN BY SAR	SCALE 1/8	MODEL NOTED
	DATE 10-17-14	REVISED 1-17-20	OUTLINE NUMBER 19024		