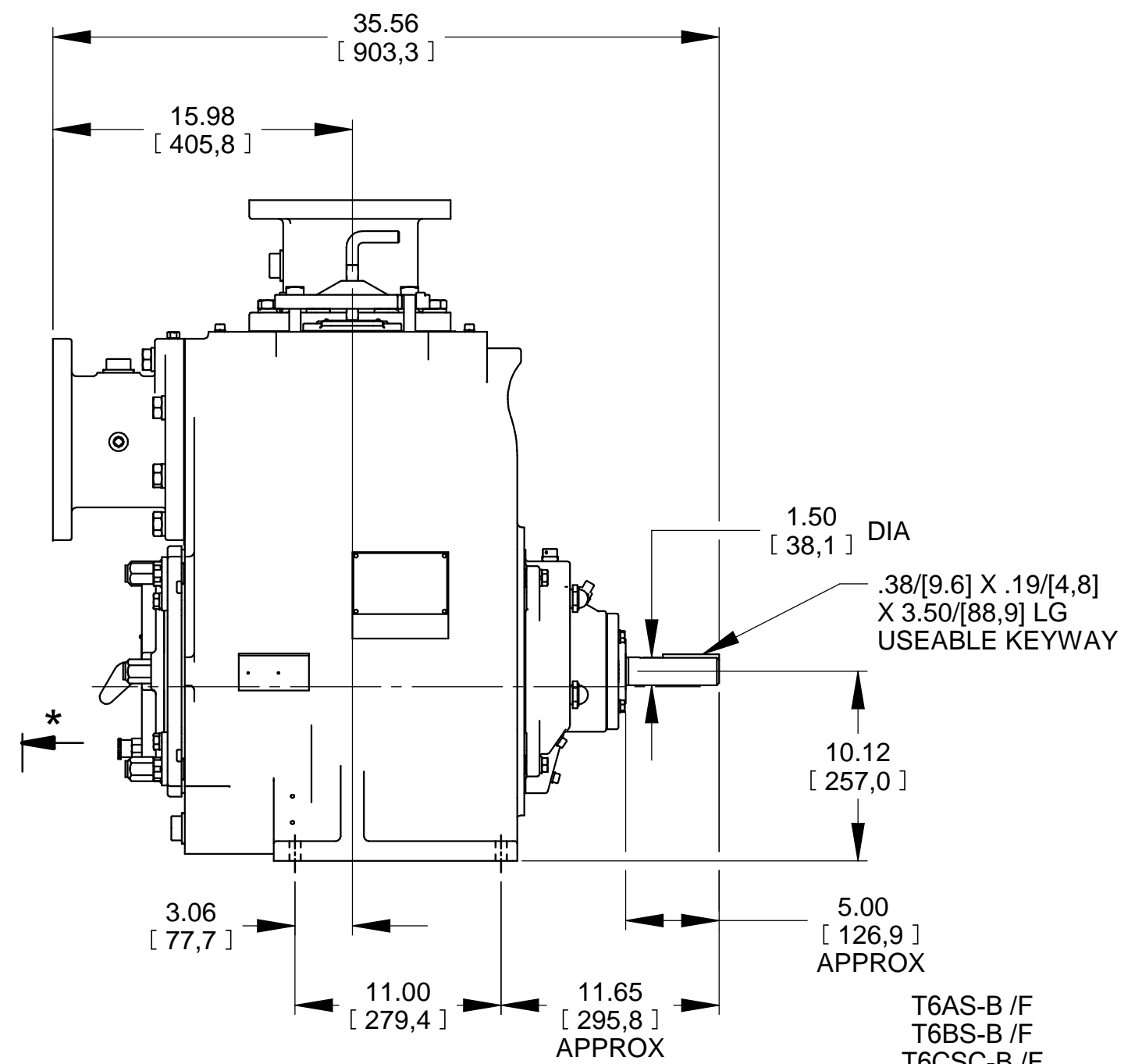
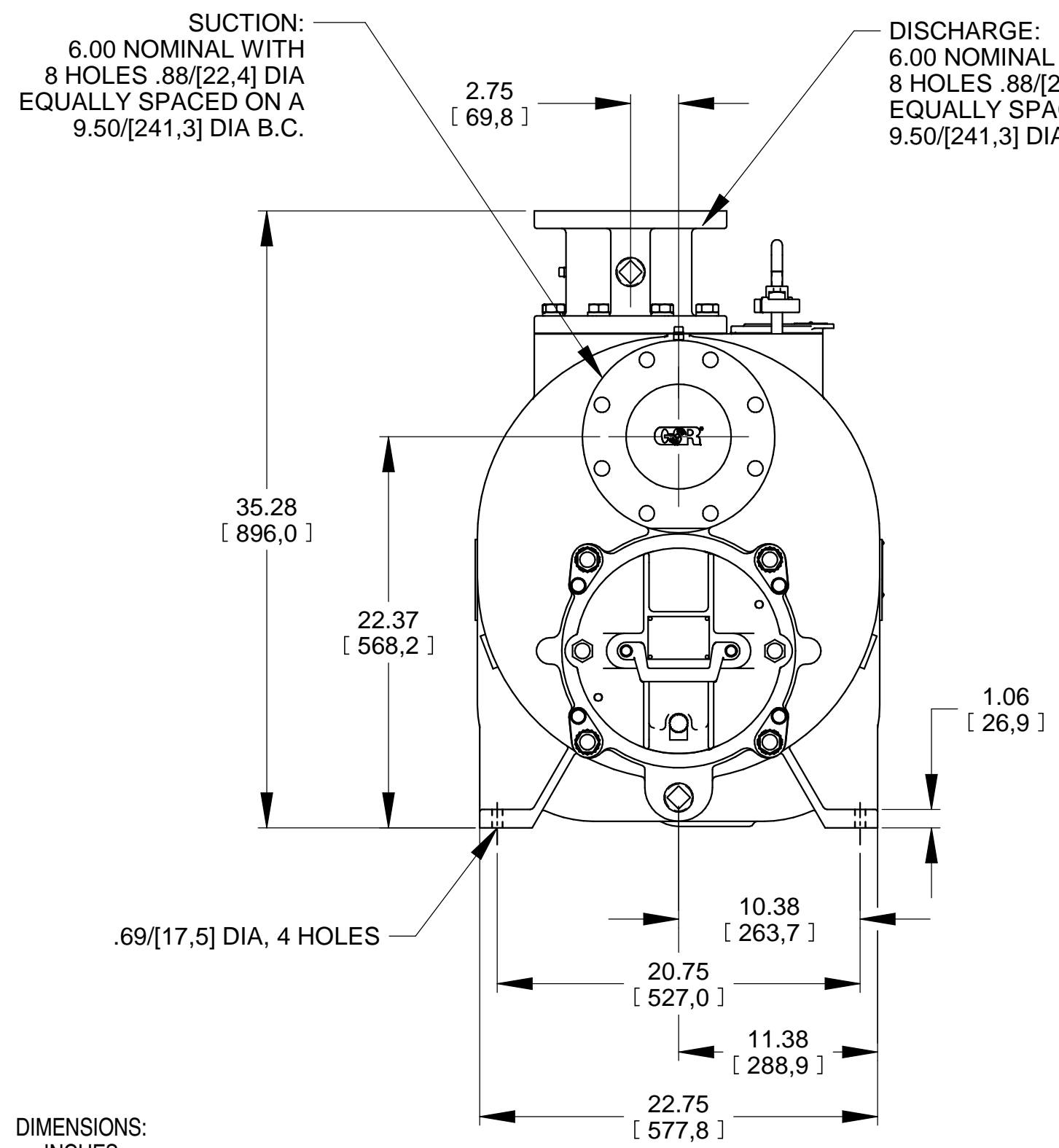


* 18.00/[457,2] RECOMMENDED FOR REMOVAL OF BACK COVER PLATE
 T6AS-B /F / T6CSC-B /F - 11.00/[279,4] REQUIRED FOR REMOVAL OF BACK COVER PLATE
 T6BS-B /F / T6DS-B /F / T6ESC-B /F / T6FSC-B /F - 12.00/[304,8] REQUIRED FOR REMOVAL OF BACK COVER PLATE



T6AS-B /F
 T6BS-B /F
 T6CSC-B /F
 T6DS-B /F
 T6ESC-B /F
 T6FSC-B /F

DIMENSIONS:
 INCHES
 [MILLIMETERS]

20-048

	THE GORMAN-RUPP CO. MANSFIELD, OHIO ST. THOMAS, ONTARIO		DRAWN BY SAR	SCALE 1/8	MODEL NOTED
	DATE 10-17-14	REVISED 09-29-20	OUTLINE NUMBER 19023		