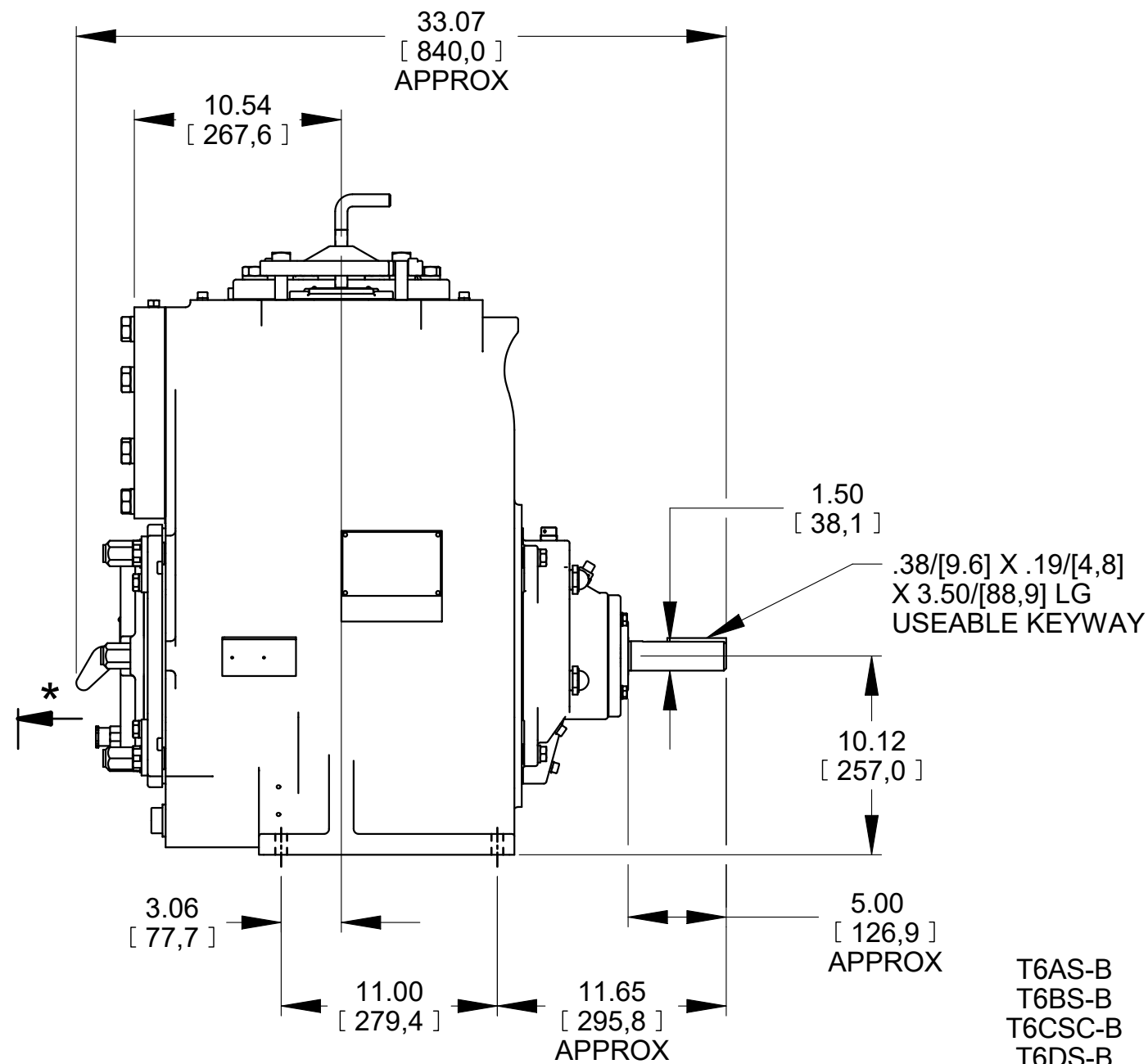
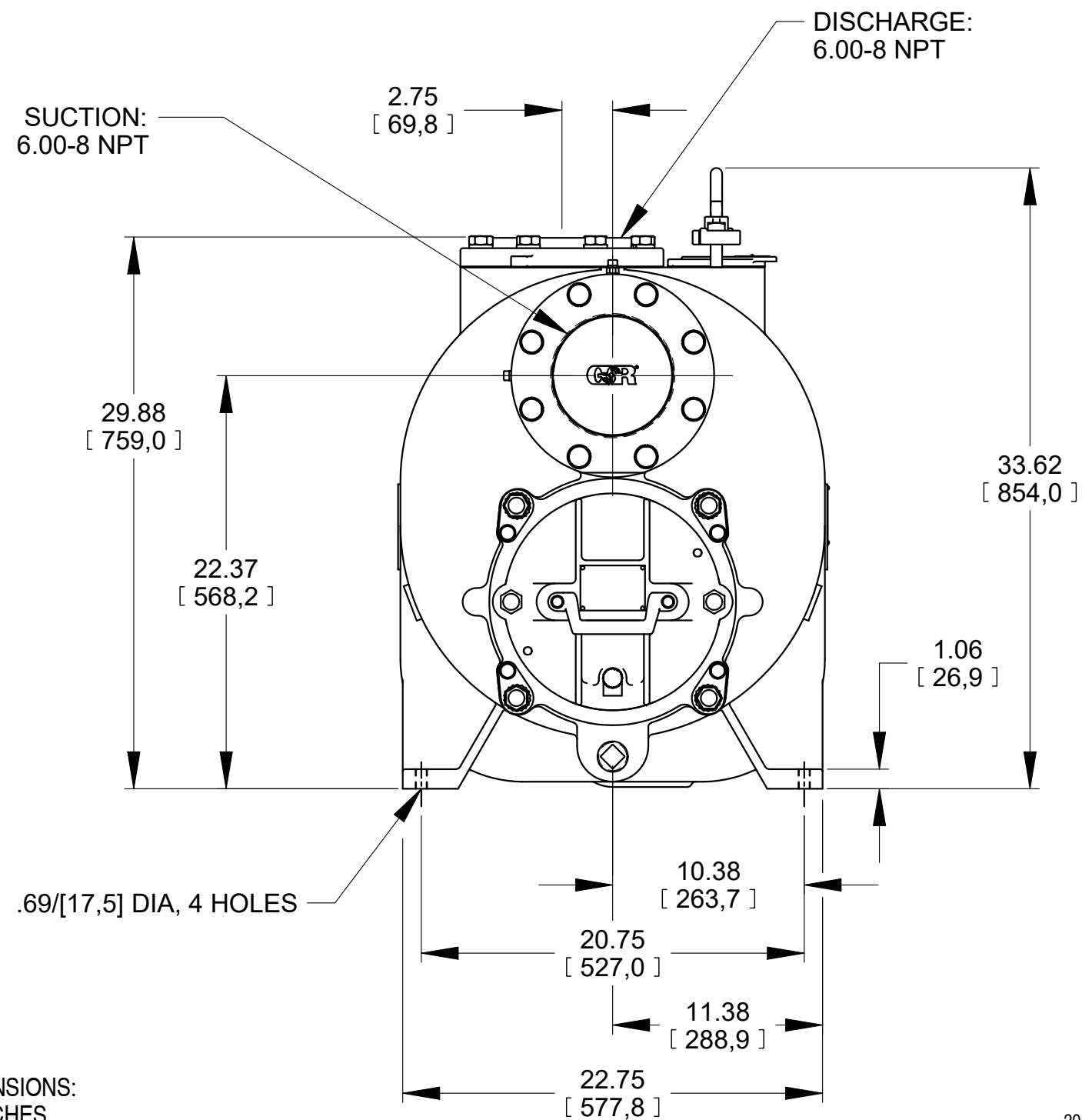


* 18.00/[457,2] RECOMMENDED FOR REMOVAL OF BACK COVER PLATE
 T6AS-B / T6CSC-B - 11.00/[279,4] REQUIRED FOR REMOVAL OF BACK COVER PLATE
 T6BS-B / T6DS-B / T6ESC-B / T6FSC-B - 12.00/[304,8] REQUIRED FOR REMOVAL OF BACK COVER PLATE



T6AS-B
 T6BS-B
 T6CSC-B
 T6DS-B
 T6ESC-B
 T6FSC-B

DIMENSIONS:
 INCHES
 [MILLIMETERS]

20-048



THE GORMAN-RUPP CO.
 MANSFIELD, OHIO ST. THOMAS, ONTARIO

DRAWN BY SAR	SCALE 1/8	MODEL NOTED
DATE 10-17-14	REVISED 09-29-20	OUTLINE NUMBER 19022