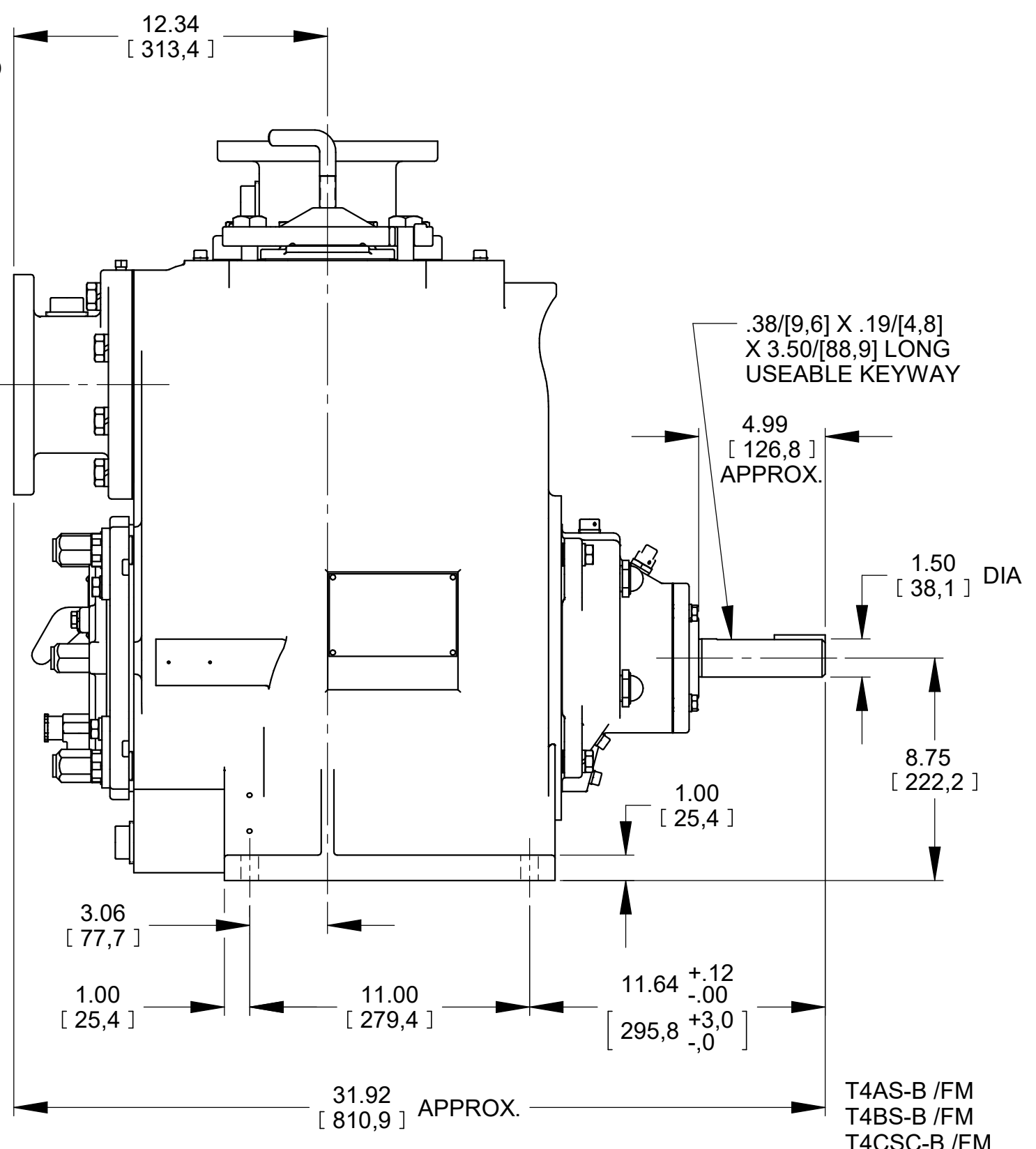
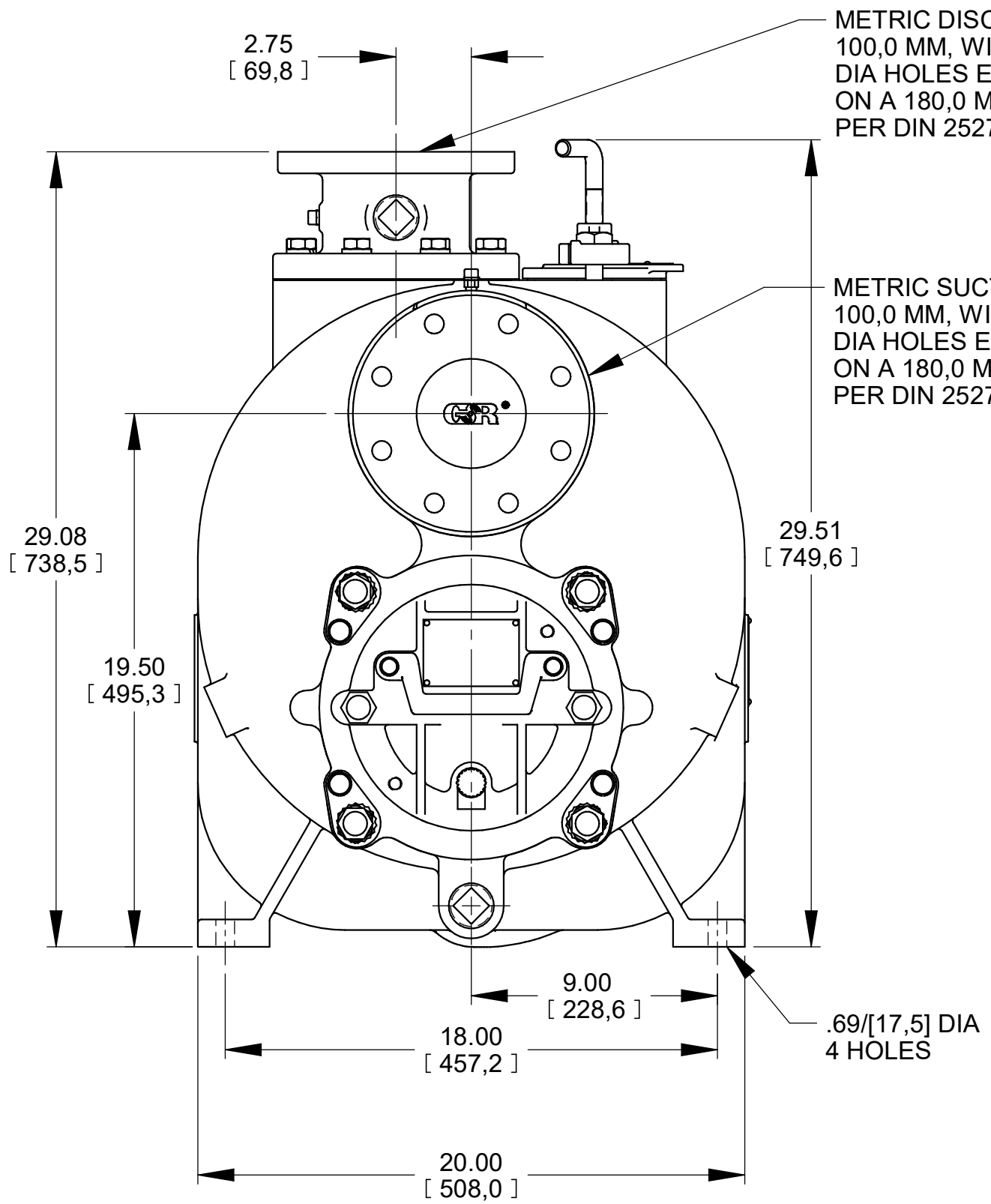


\* 18.00 [457,2] RECOMMENDED FOR REMOVAL OF BACK COVER PLATE  
 T4AS-B / T4CSC-B - 10.00 [254,0] REQUIRED FOR REMOVAL OF BACK COVER PLATE.  
 T4BS-B - 11.50 [292,1] REQUIRED FOR REMOVAL OF BACK COVER PLATE.



DIMENSIONS:  
 INCHES  
 [MILLIMETERS]

19-004

	<b>THE GORMAN-RUPP CO.</b> MANSFIELD, OHIO ST. THOMAS, ONTARIO		DRAWN BY JPJ	SCALE 3/16	MODEL NOTED
	DATE 10-14-14	REVISED 12-6-19	OUTLINE NUMBER <b>19020</b>		