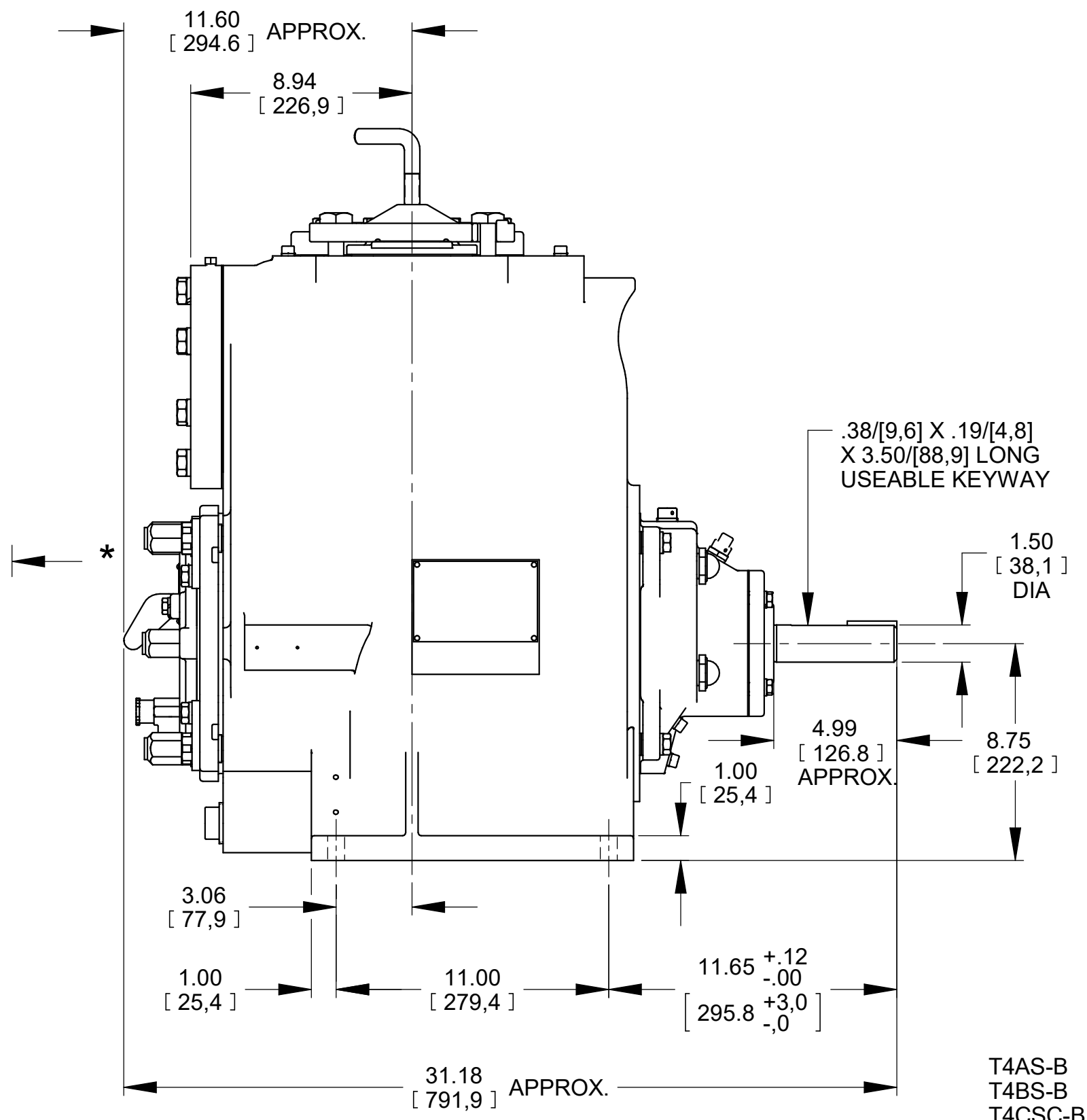
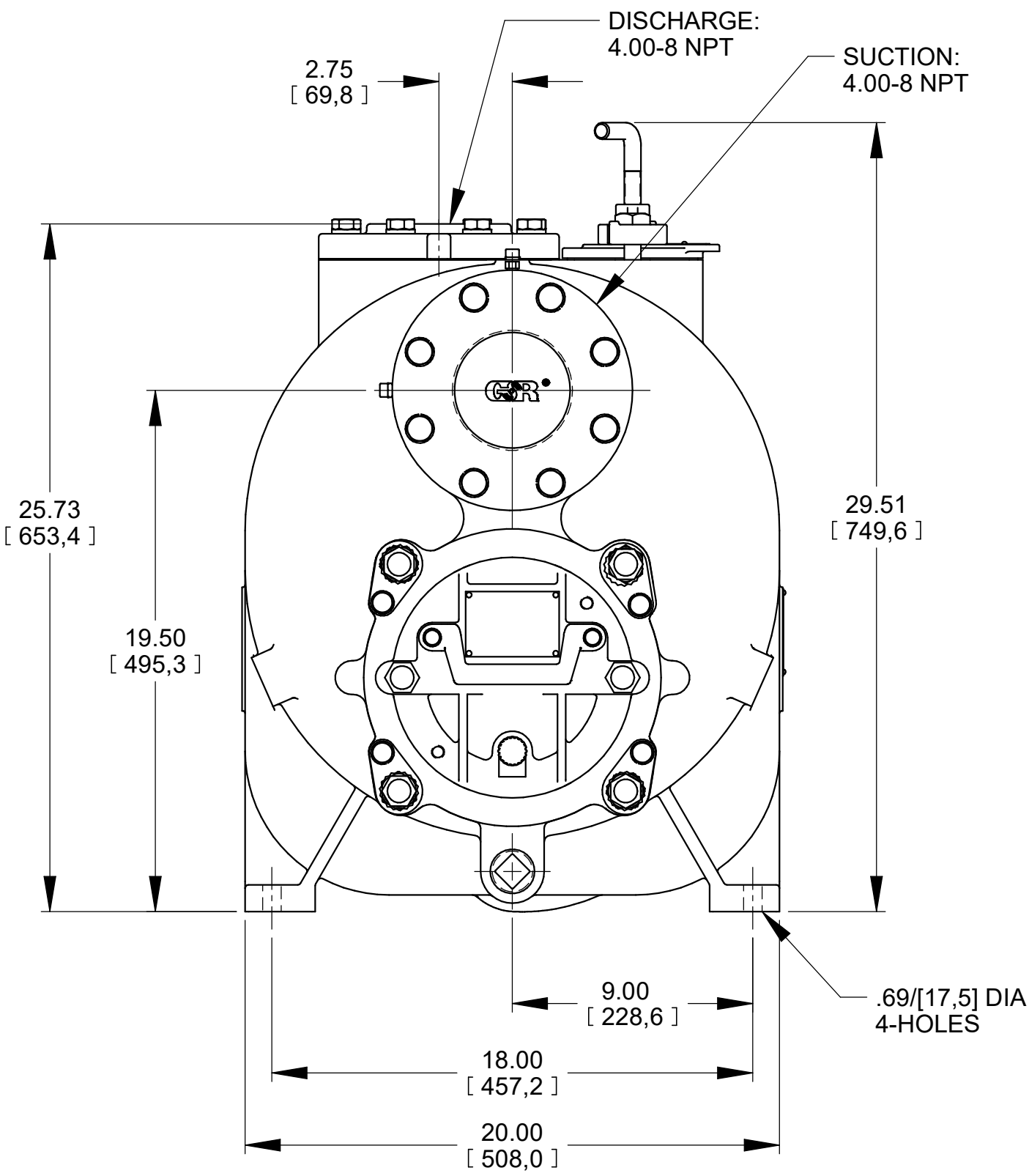


* 18.00/[457,2] RECOMMENDED FOR REMOVAL OF BACK COVER PLATE
 T4AS-B / T4CSC-B - 10.00/[254,0] REQUIRED FOR REMOVAL OF BACK COVER PLATE
 T4BS-B - 11.50/[292,1] REQUIRED FOR REMOVAL OF BACK COVER PLATE



DIMENSIONS:
INCHES
[MILLIMETERS]

19-004

THE GORMAN-RUPP CO. MANSFIELD, OHIO ST. THOMAS, ONTARIO	DRAWN BY JPJ	SCALE 3/16	MODEL NOTED
	DATE 10-14-14	REVISED 11-8-19	OUTLINE NUMBER 19017