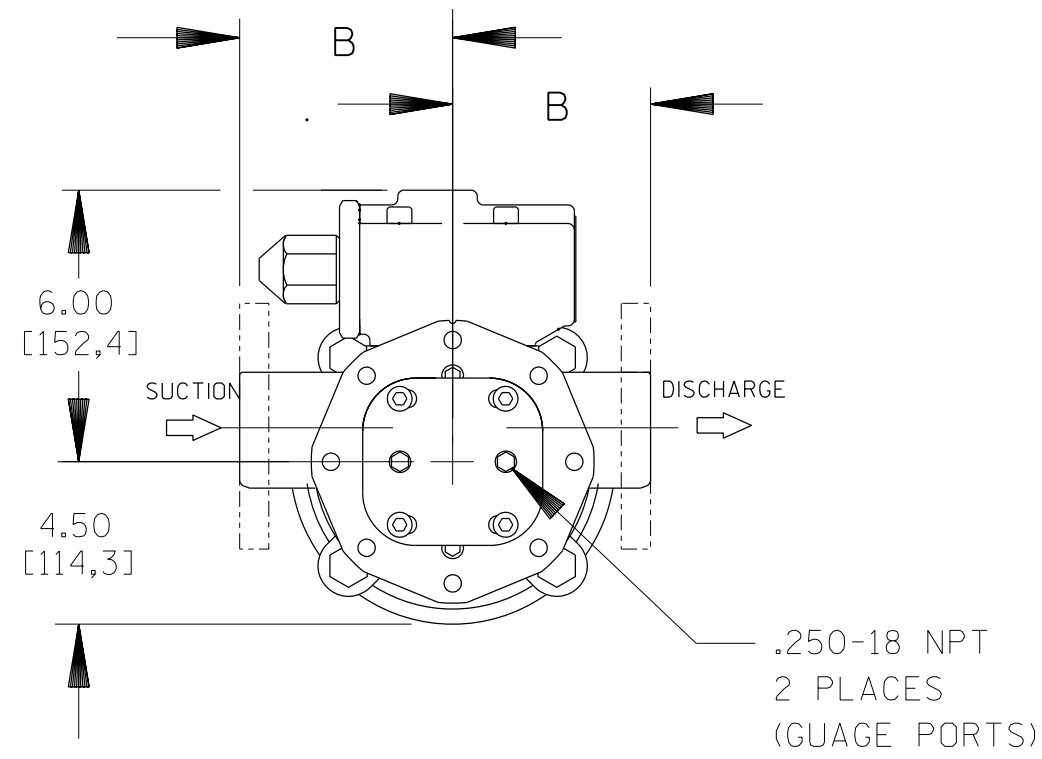
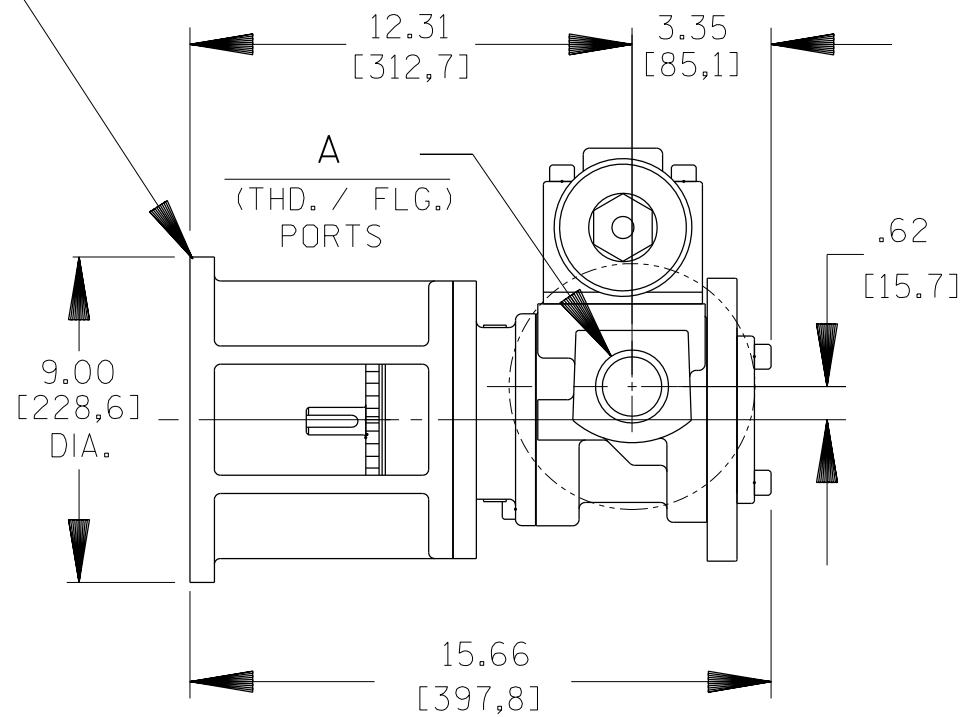


B 18459

GHC WITH MOTOR ADAPTOR

MOTOR ADAPTOR  
FLANGE FOR  
182TC/184TC,  
213TC/215TC




PORT DIMENSIONS				
A	FLG. ANSI	B	THD. NPT	B
1-1/2"	125#	4.00 [102]	1.50-11.5	3.75 [95]

CLOCKWISE ROTATION  
(FROM SHAFT END) 

DIMENSIONS:  
INCHES  
[MILLIMETERS]

1. DO NOT SCALE DRAWING.  
2. GRAPHICS ARE NOT TO SCALE.

 <b>THE GORMAN-RUPP CO.</b> MANSFIELD, OHIO ST. THOMAS, ONTARIO	DRAWN BY CSI	SCALE NONE	MODEL GHC "G" 180°
	DATE 7-23-10	REVISED	OUTLINE NUMBER 18459