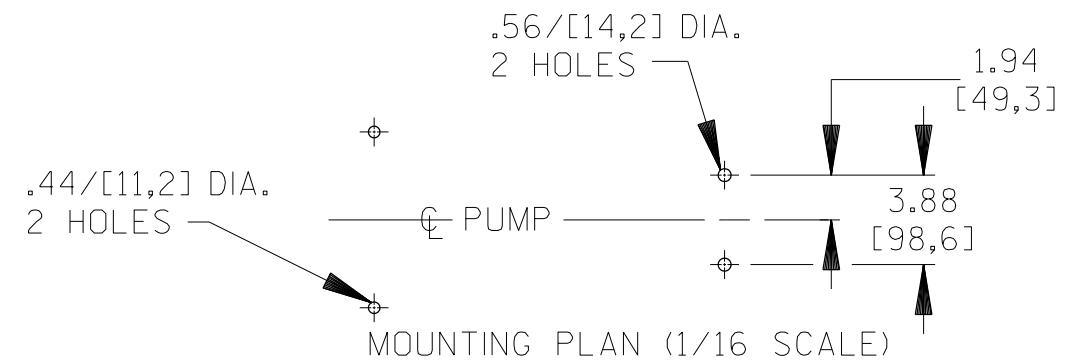
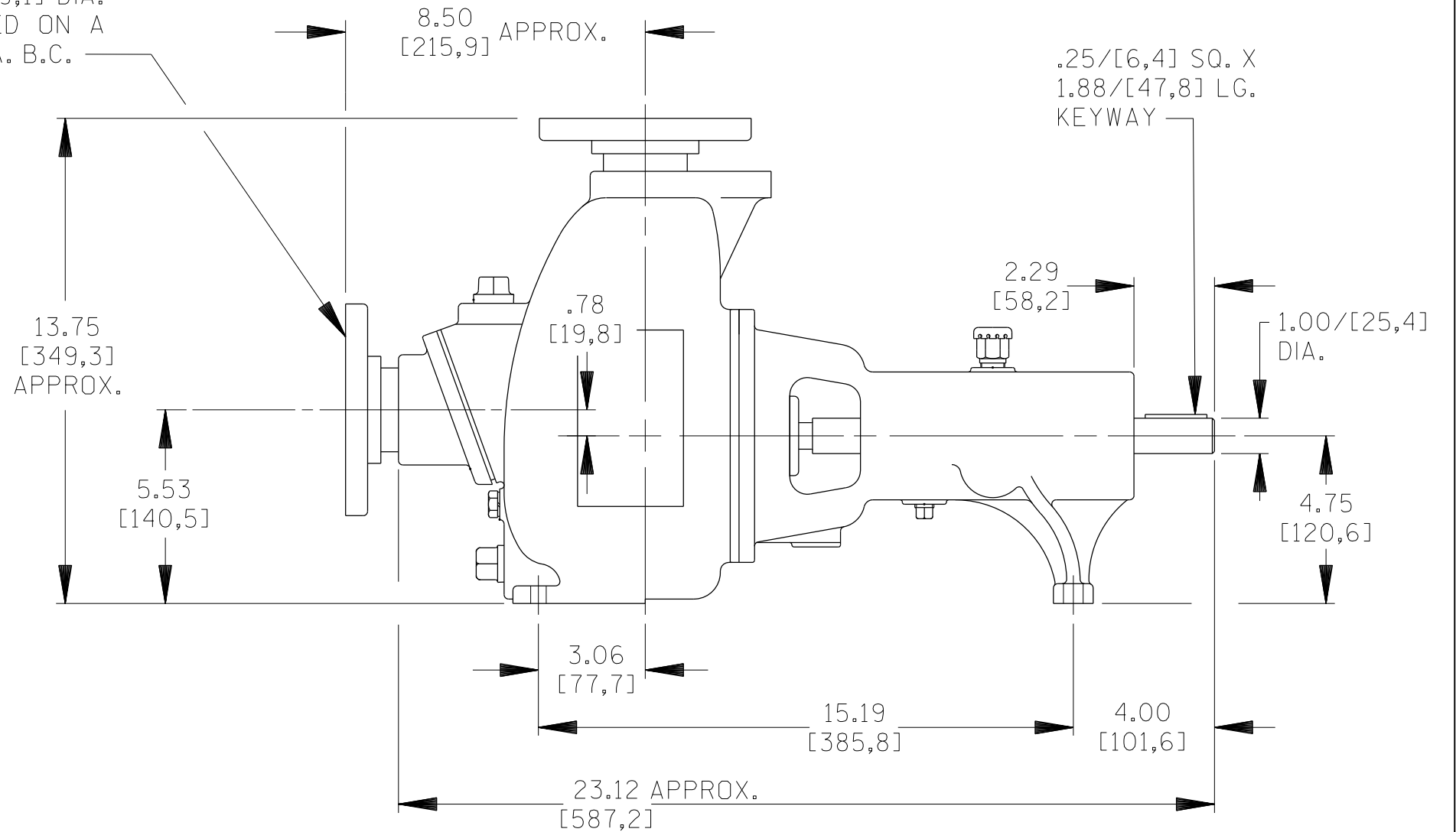
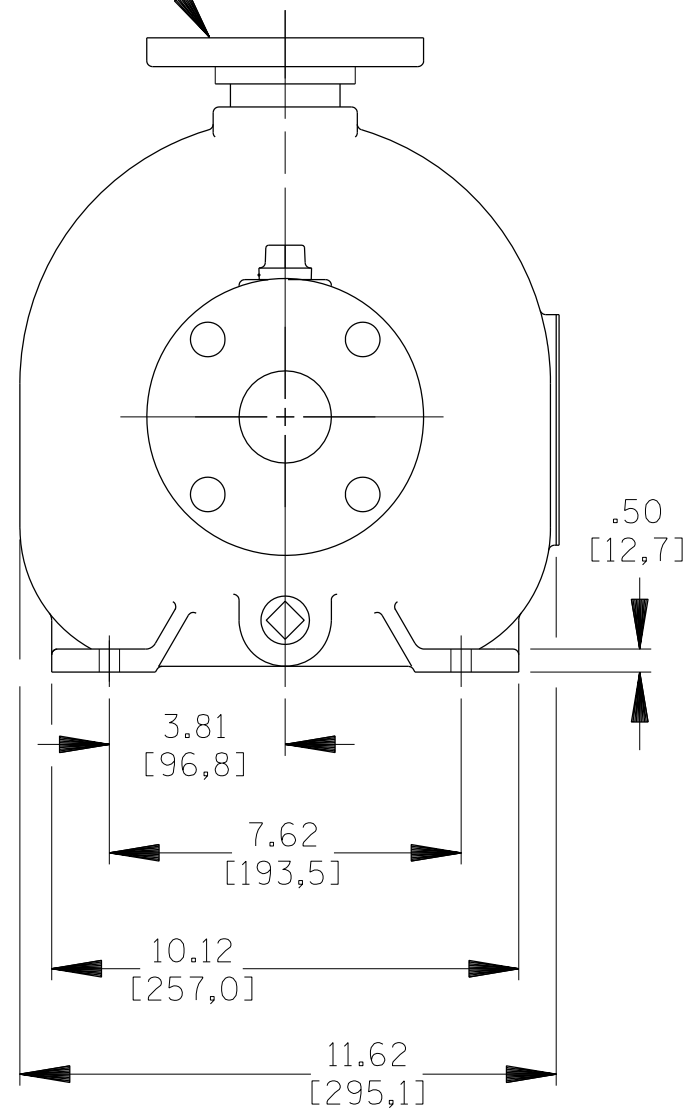


B 18295

DISCHARGE:
2.00 NOMINAL WITH
4 HOLES .75/[19,1] DIA.
EQUALLY SPACED ON A
4.75/[120,6] DIA. B.C.

SUCTION:
2.00 NOMINAL WITH
4 HOLES .75/[19,1] DIA.
EQUALLY SPACED ON A
4.75/[120,6] DIA. B.C.



DIMENSIONS:
INCHES
[MILLIMETERS]

	THE GORMAN-RUPP CO. MANSFIELD, OHIO ST. THOMAS, ONTARIO	DRAWN BY CSI	SCALE 1/4	MODEL 82E-B
		DATE 3-24-09	REVISED	OUTLINE NUMBER 18295