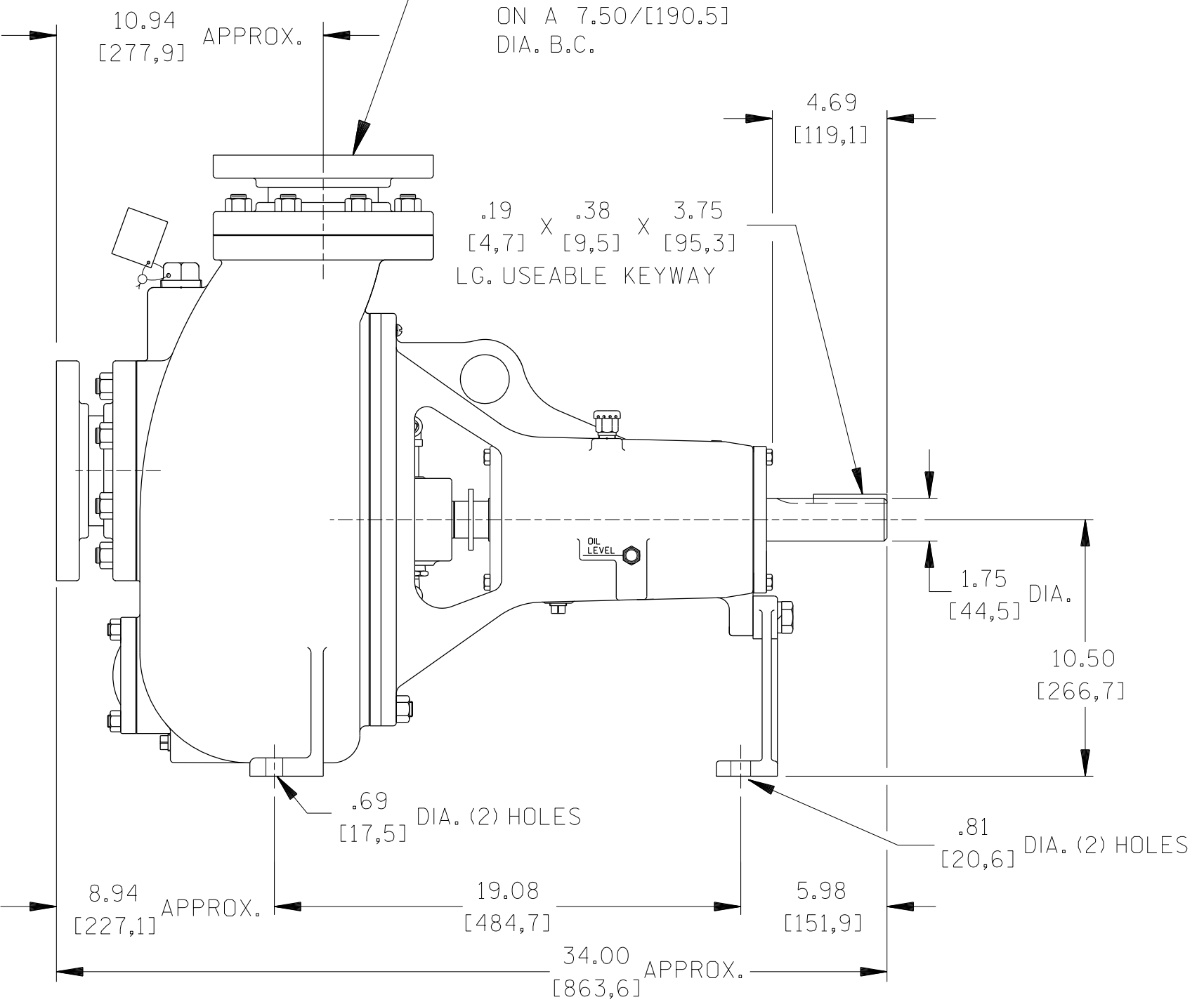
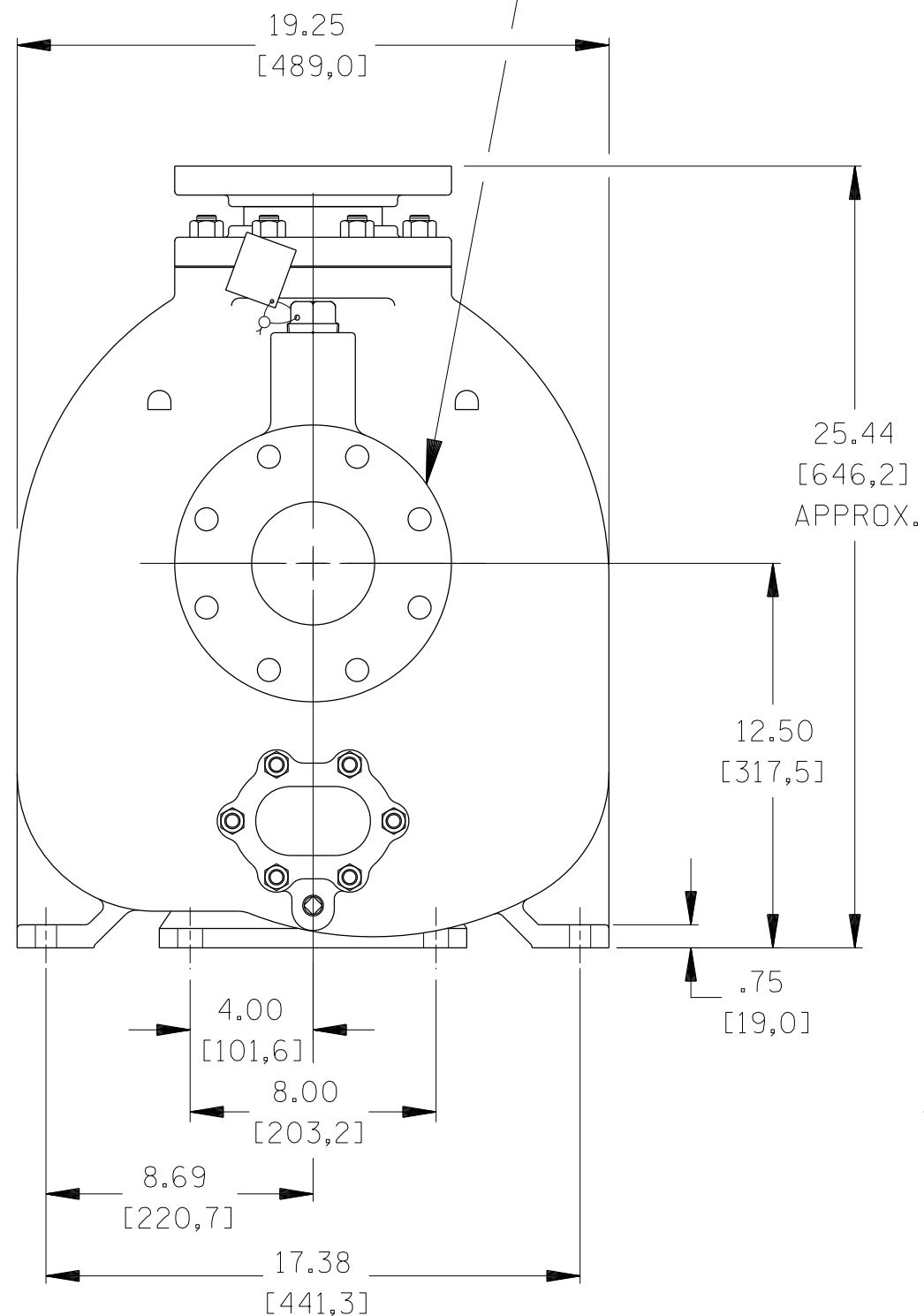


B 18291

SUCTION:
4.00 NOMINAL WITH
8 HOLES .75/[19,1]
DIA. EQUALLY SPACED
ON A 7.50/[190.5]
DIA. B.C.

DISCHARGE:
4.00 NOMINAL WITH
8 HOLES .75/[19,1]
DIA. EQUALLY SPACED
ON A 7.50/[190.5]
DIA. B.C.



DIMENSIONS:
INCHES
[MILLIMETERS]

	THE GORMAN-RUPP CO. MANSFIELD, OHIO ST. THOMAS, ONTARIO		DRAWN BY CSI	SCALE 3/16	MODEL 04B-B
	DATE 3-24-09	REVISED	OUTLINE NUMBER 18291		