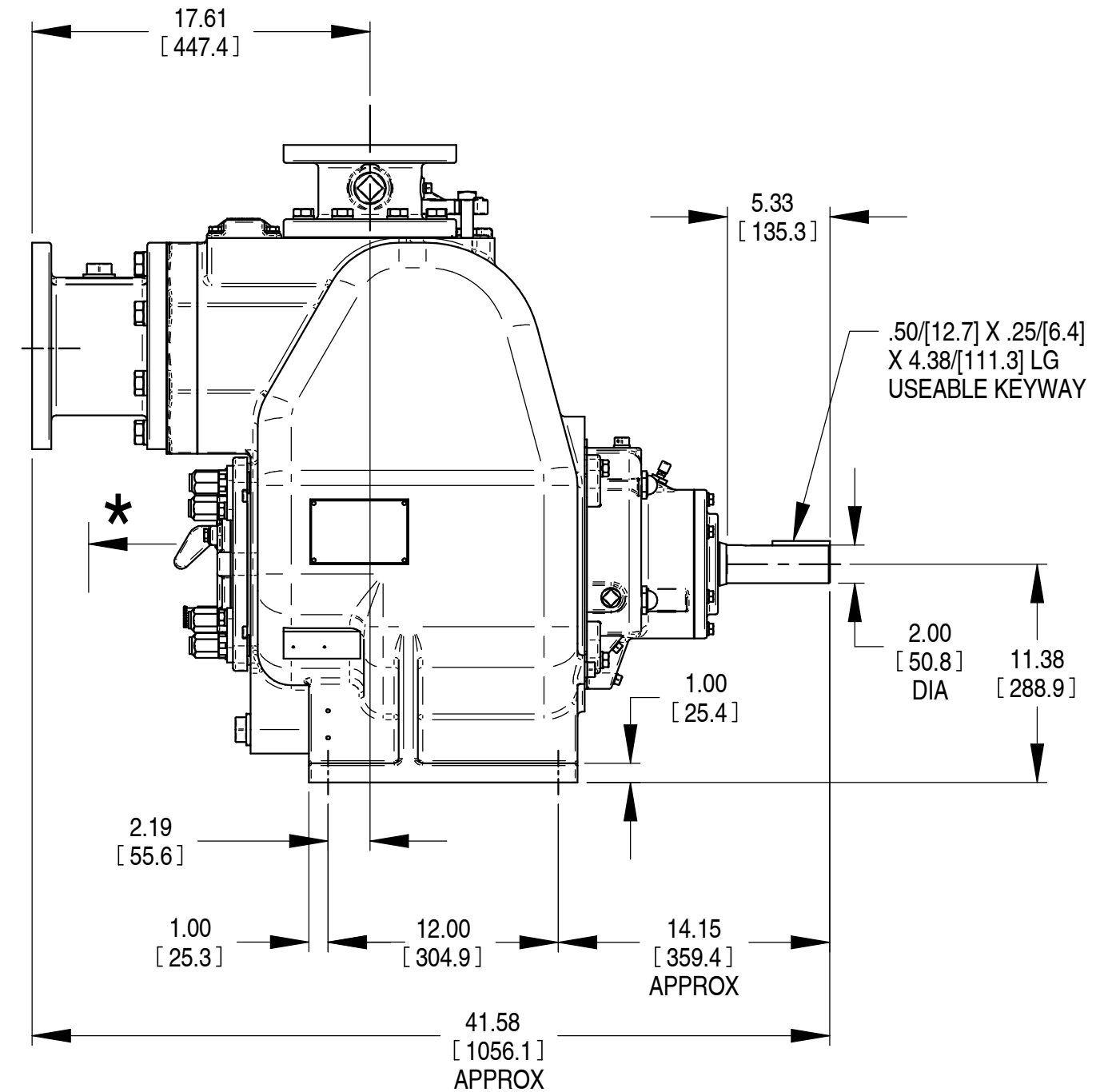
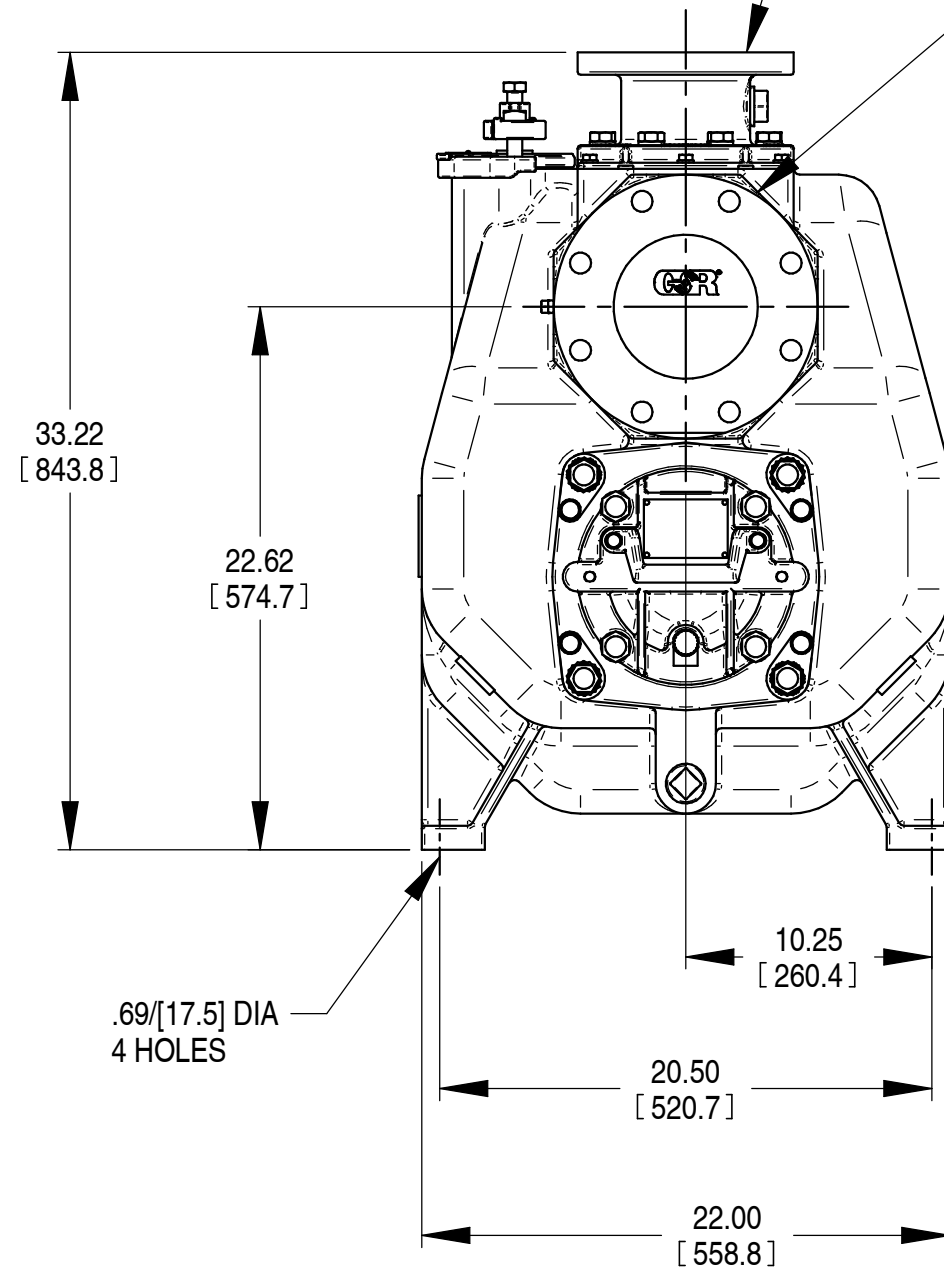


\* 18.00/[457.2] RECOMMENDED FOR REMOVAL OF BACK PLATE

10.50/[266.7] REQUIRED FOR REMOVAL OF BACK PLATE

DISCHARGE:  
4.00 NOMINAL WITH 8 HOLES  
.75/[19.0] DIA EQUALLY SPACED  
ON A 6.00/[152.4] DIA B C

SUCTION:  
6.00 NOMINAL WITH 8 HOLES  
.87/[22.1] DIA EQUALLY SPACED  
ON A 9.50/[241.3] DIA B C



DIMENSIONS:  
INCHES  
[MILLIMETERS]

20-008

SHOWN WITH OPTIONAL 6" X 4" SUCTION/DISCHARGE SPOOL KIT

	<b>THE GORMAN-RUPP CO.</b> MANSFIELD, OHIO ST. THOMAS, ONTARIO		DRAWN BY REP	SCALE 1/8	MODEL V4A-B / V4CSC-B
	DATE 4/17/2006	REVISED 6/24/2020	OUTLINE NUMBER <b>18040</b>		