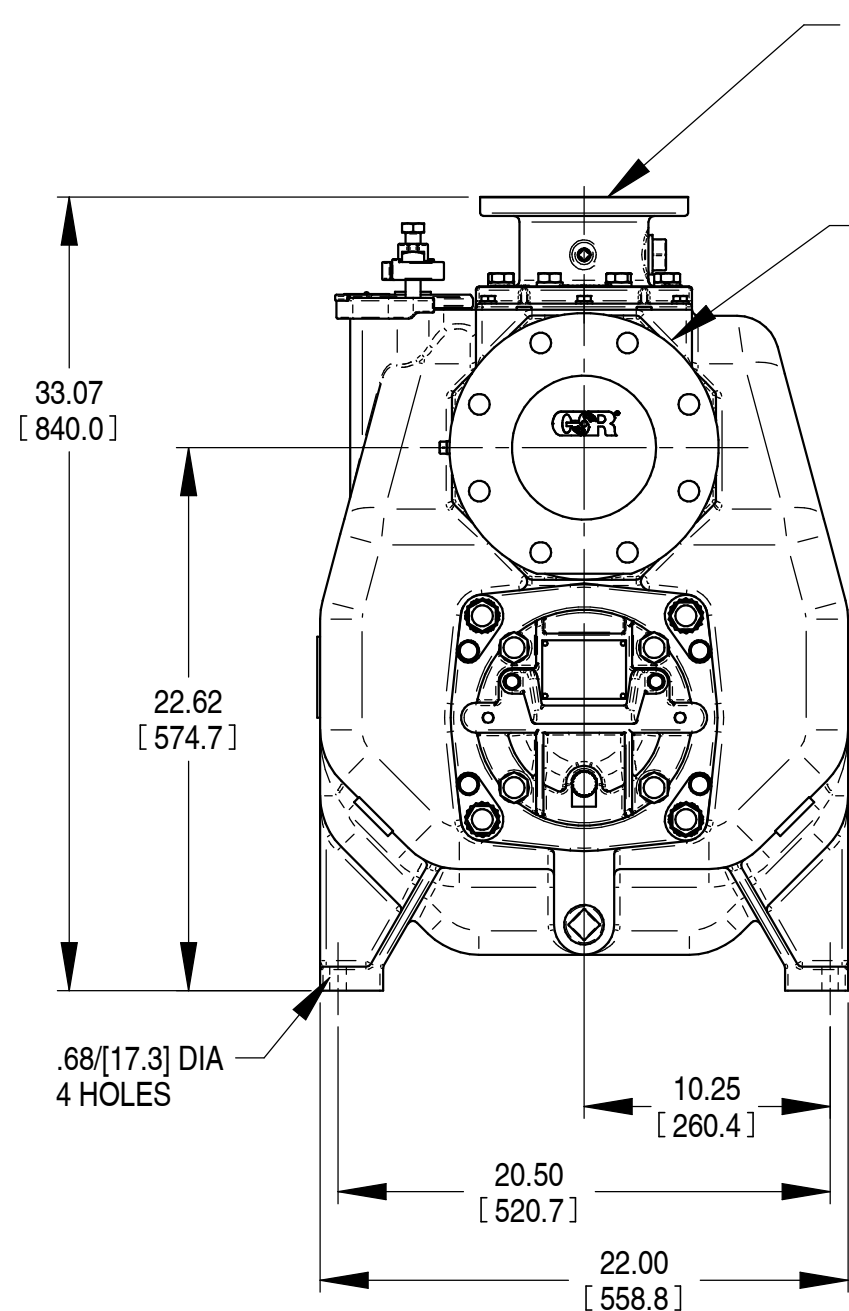


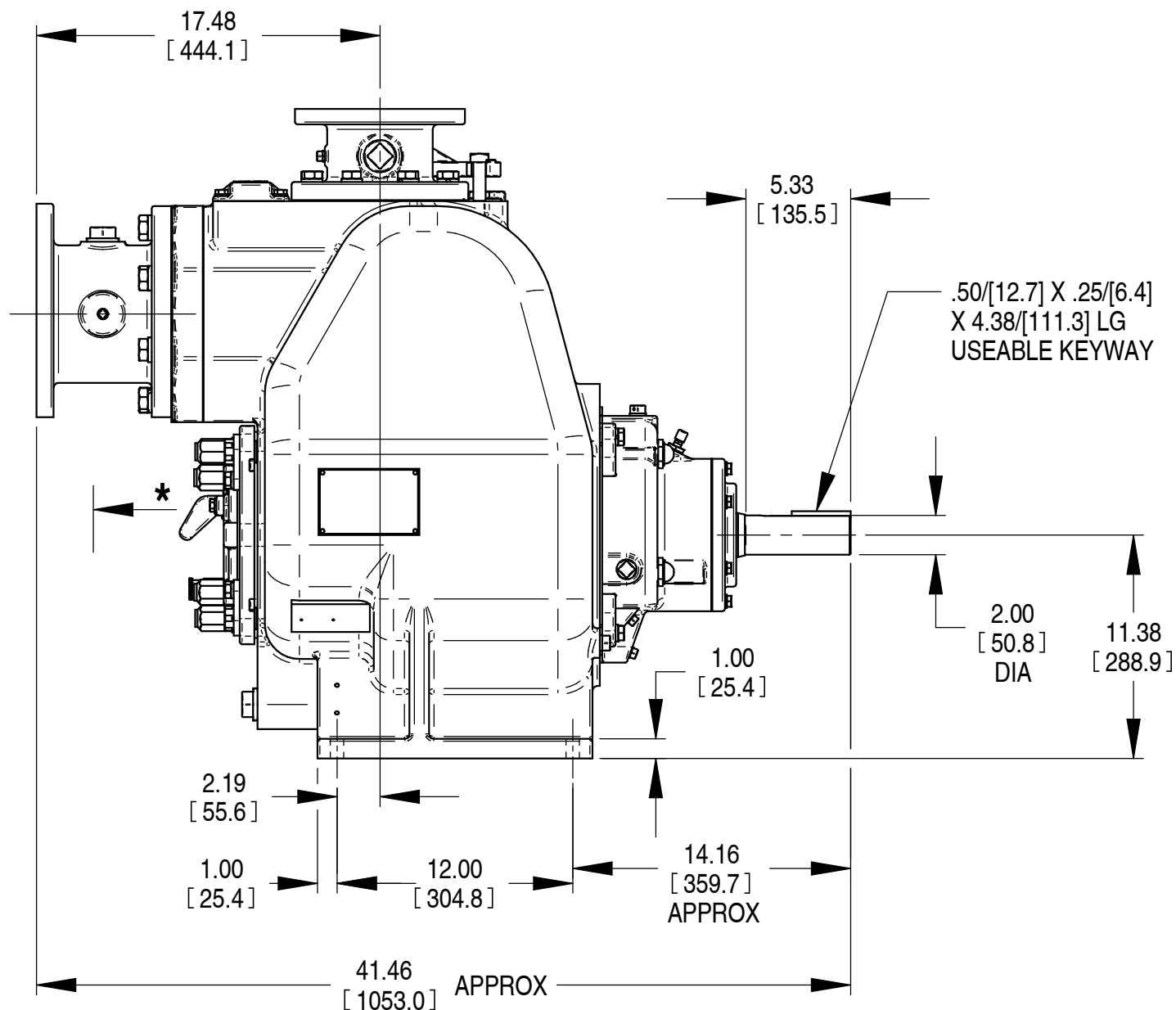
\* 18.00/[457.2] RECOMMENDED FOR  
REMOVAL OF BACK COVER PLATE

10.50/[266.7] REQUIRED FOR  
REMOVAL OF BACK COVER PLATE



DISCHARGE:  
100,0 MM, WITH (8) 18,0 MM DIA  
HOLES EQUALLY SPACED  
ON A 180,0 MM DIA B.C.  
PER DIN 2527, (PN16).

SUCTION:  
150,0 MM, WITH (8) 22,0 MM DIA  
HOLES EQUALLY SPACED  
ON A 240,0 MM DIA B.C.  
PER DIN 2527, (PN16).



SHOWN WITH OPTIONAL METRIC SPOOL FLANGES

DIMENSIONS:  
INCHES  
[MILLIMETERS]

20-008



**THE GORMAN-RUPP CO.**  
MANSFIELD, OHIO ST. THOMAS, ONTARIO

DRAWN BY  
DFB  
DATE  
10/18/2006

SCALE  
1/8  
REVISED  
8/14/2020

MODEL  
V4A-B / V4CSC-B  
OUTLINE NUMBER  
17865