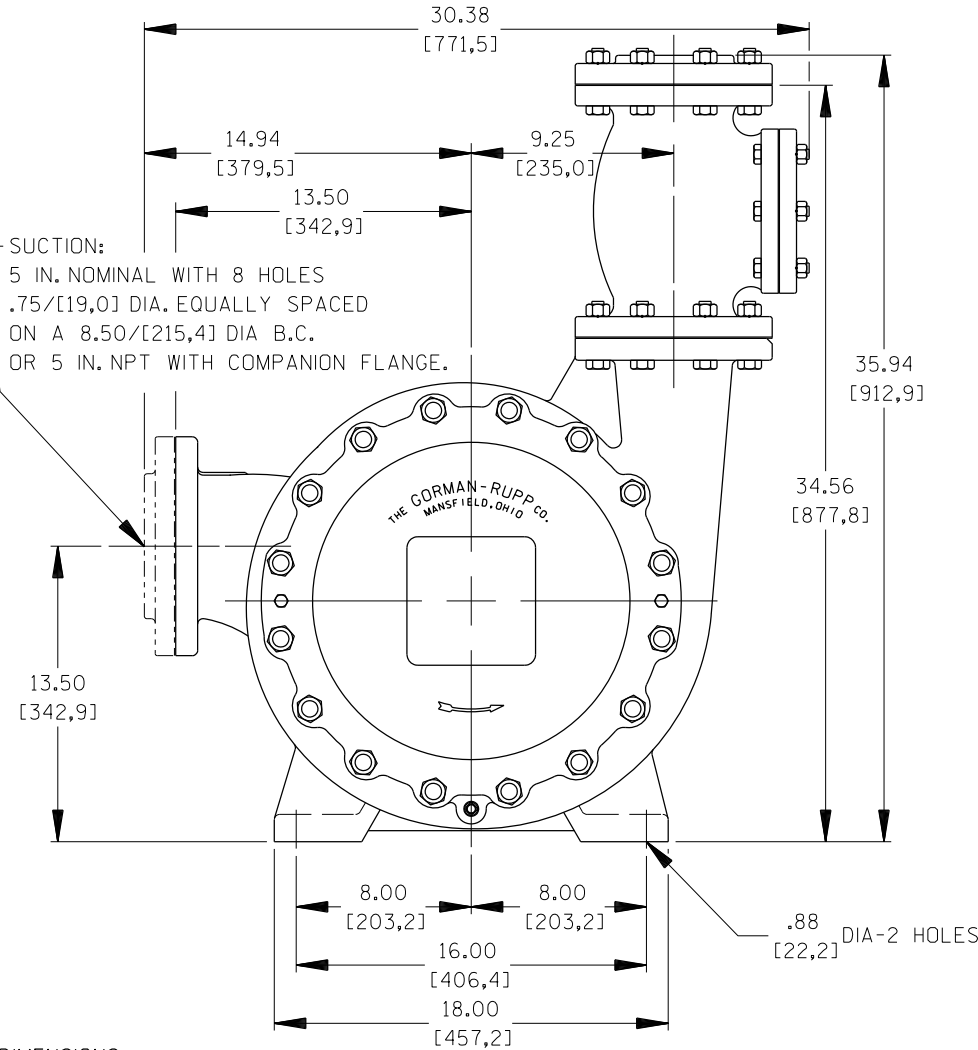


B-6883A

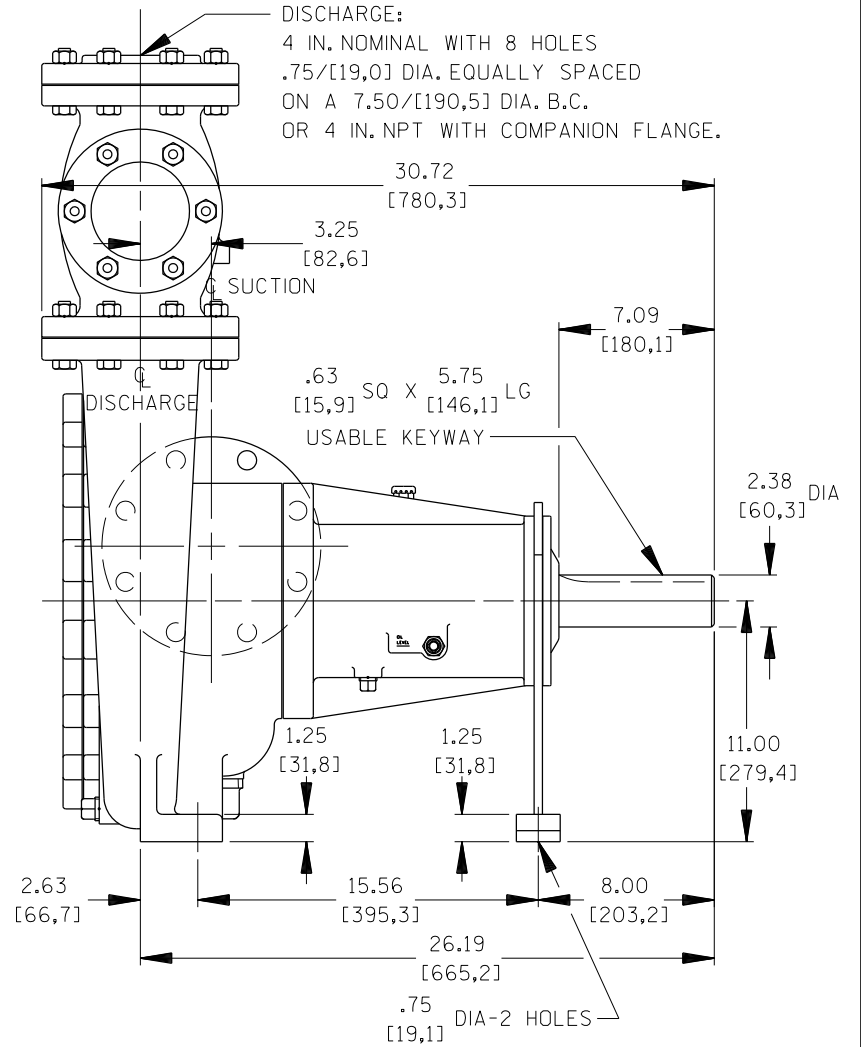
SHOWN WITH OPTIONAL CHECK VALVE

B 17741



SUCTION:
5 IN. NOMINAL WITH 8 HOLES
.75/[19,0] DIA. EQUALLY SPACED
ON A 8.50/[215,4] DIA B.C.
OR 5 IN. NPT WITH COMPANION FLANGE.

DISCHARGE:
4 IN. NOMINAL WITH 8 HOLES
.75/[19,0] DIA. EQUALLY SPACED
ON A 7.50/[190,5] DIA. B.C.
OR 4 IN. NPT WITH COMPANION FLANGE.



DIMENSIONS:
INCHES
[MILLIMETERS]

	THE GORMAN-RUPP CO. MANSFIELD, OHIO ST. THOMAS, ONTARIO		DRAWN BY SS	SCALE 3/16	MODEL 54J-B / 54K-B
	DATE 3-2-05	REVISIONS	OUTLINE NUMBER 17741		