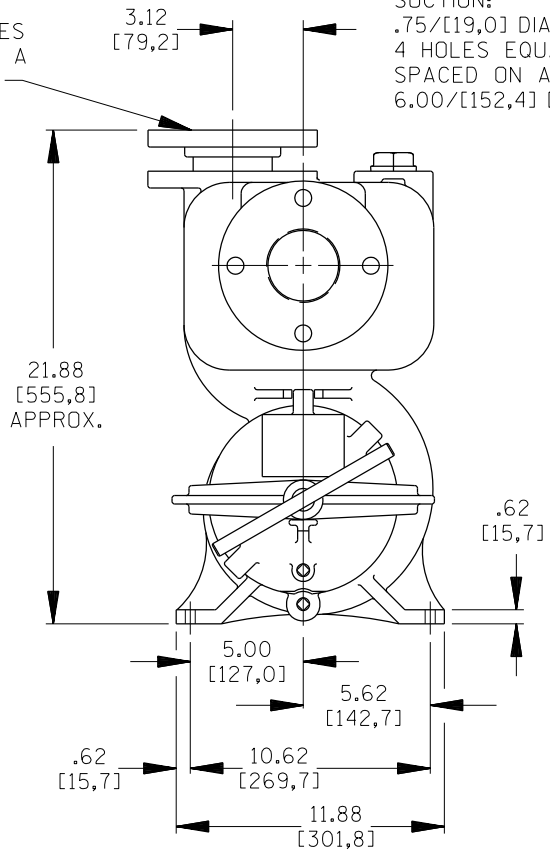


B 17664

DISCHARGE:
.75/[19,0] DIA. 4 HOLES
EQUALLY SPACED ON A
6.00/[152,4] DIA. B.C.

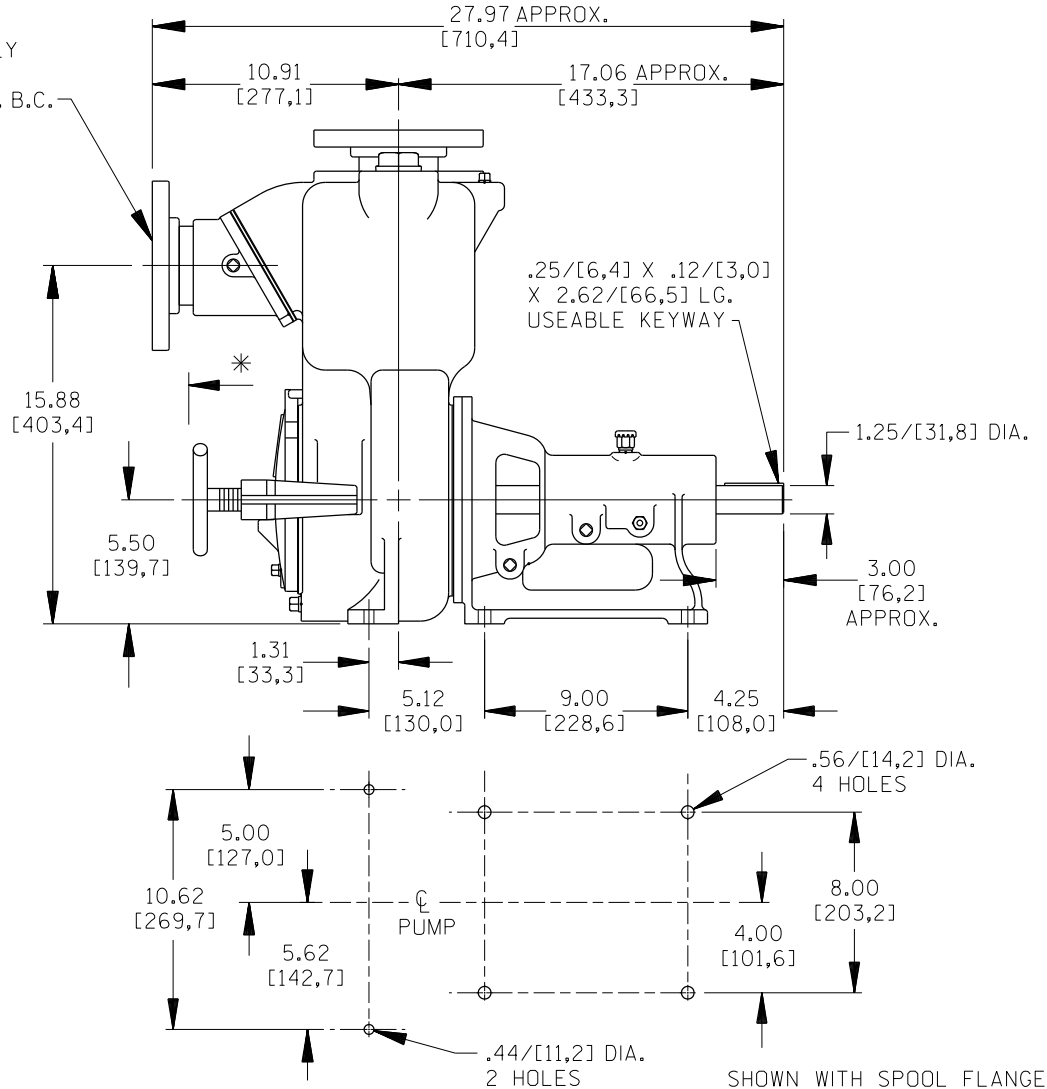
SUCTION:
.75/[19,0] DIA.
4 HOLES EQUALLY
SPACED ON A
6.00/[152,4] DIA. B.C.



* 18.00/[457,2] RECOMMENDED FOR
REMOVAL OF BACK COVER PLATE

6.00/[152,4] REQUIRED FOR
REMOVAL OF BACK COVER PLATE

DIMENSIONS:
INCHES
[MILLIMETERS]



	THE GORMAN-RUPP CO. MANSFIELD, OHIO ST. THOMAS, ONTARIO		DRAWN BY SS	SCALE $\frac{3}{16}$	MODEL 13A22-B
	DATE 8-16-04	REVISED	OUTLINE NUMBER 17664		