

B

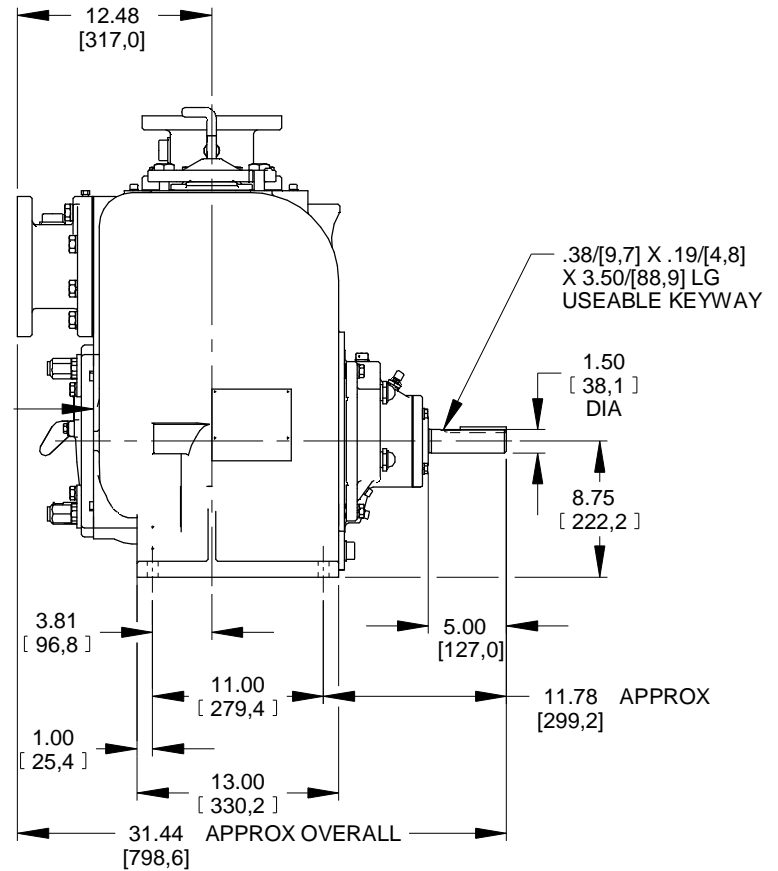
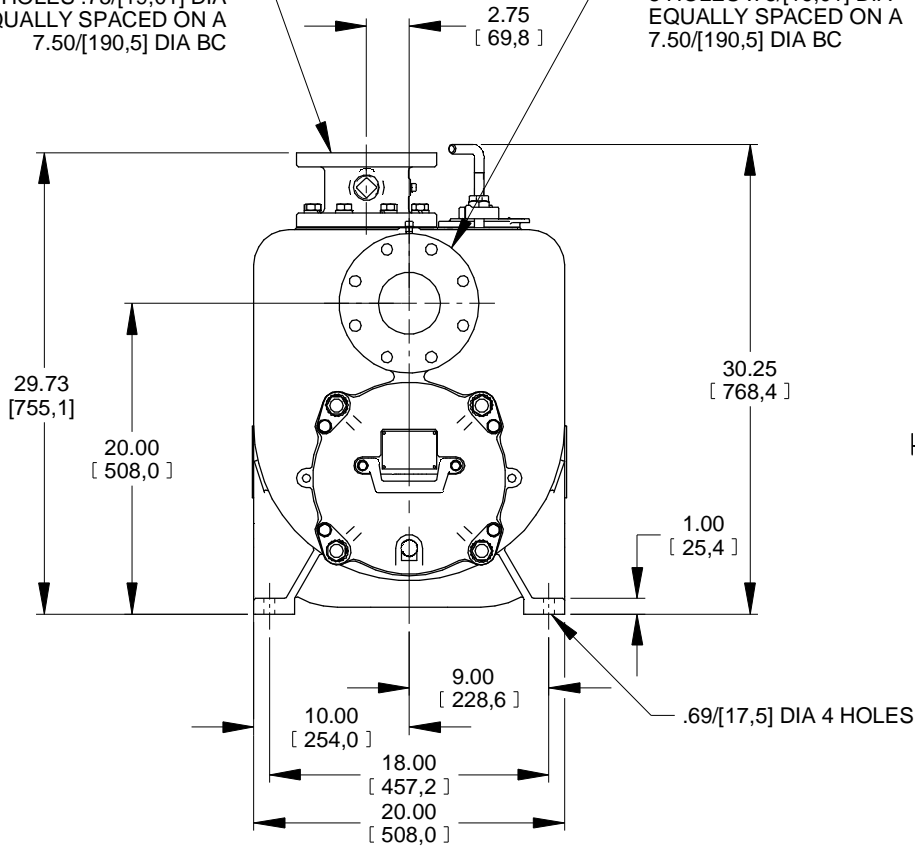
17616

SHEET
1 OF 1

* 18.00/[457,2] RECOMMENDED FOR
REMOVAL OF BACK COVER PLATE
10.00/[254,0] REQUIRED FOR
REMOVAL OF BACK COVER PLATE

DISCHARGE:
4.00 NOMINAL WITH
8 HOLES .75/[19,01] DIA
EQUALLY SPACED ON A
7.50/[190,5] DIA BC

SUCTION:
4.00 NOMINAL WITH
8 HOLES .75/[19,01] DIA
EQUALLY SPACED ON A
7.50/[190,5] DIA BC



DIMENSIONS:
INCHES
[MILLIMETERS]

11-023

a

THE GORMAN-RUPP CO.

MANSFIELD, OHIO

ST. THOMAS, ONTARIO

DRAWN BY
MLB

DATE
4-22-04

SCALE
1/8

REVISED
7-16-12

MODEL
U4BS-B /F

OUTLINE NUMBER
17616