

B

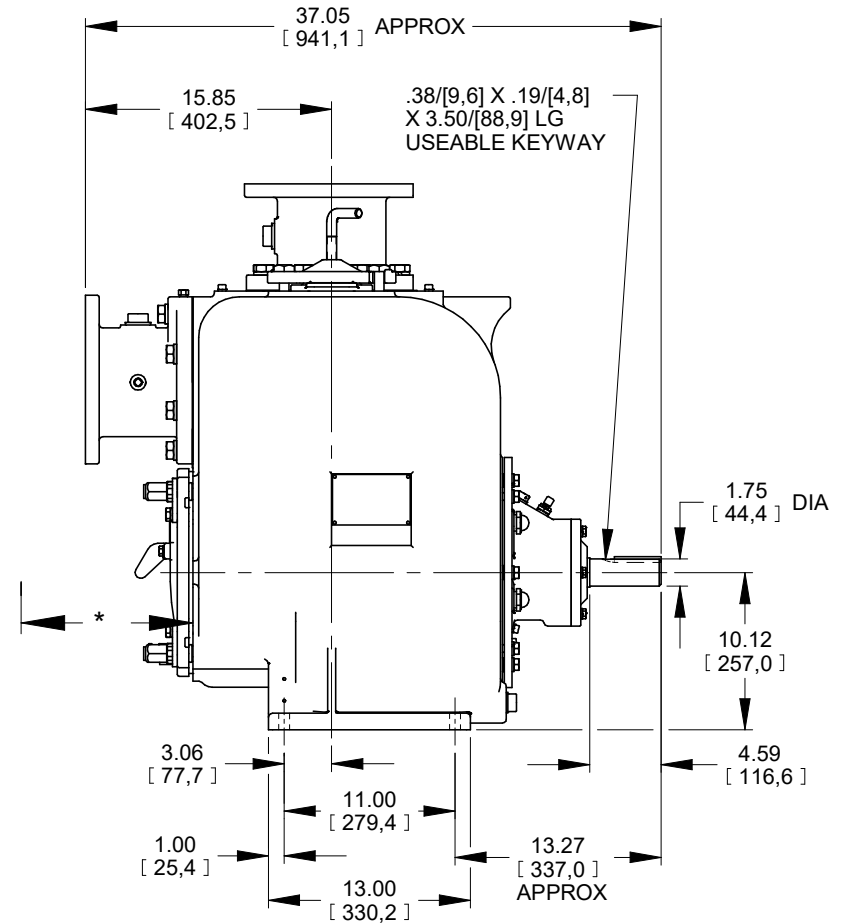
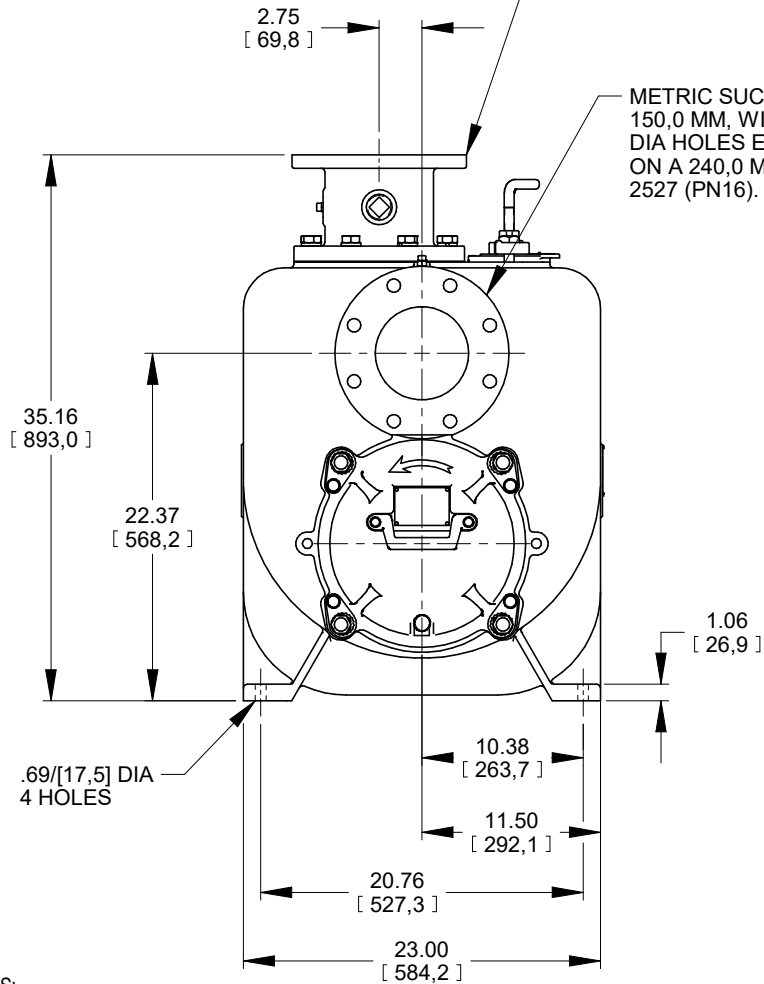
17612

SHEET
1 OF 1

* 24.00/[609,6] RECOMMENDED FOR
REMOVAL OF BACK COVER PLATE
11.50/[292,1] REQUIRED FOR
REMOVAL OF BACK COVER PLATE

METRIC DISCHARGE FLANGE:
150,0 MM, WITH (8) 22,0 MM
DIA HOLES EQUALLY SPACED
ON A 240,0 MM DIA BC PER DIN
2527 (PN16).

METRIC SUCTION FLANGE:
150,0 MM, WITH (8) 22,0 MM
DIA HOLES EQUALLY SPACED
ON A 240,0 MM DIA BC PER DIN
2527 (PN16).



DIMENSIONS:
INCHES
[MILLIMETERS]

19-003



THE GORMAN-RUPP CO.
MANSFIELD, OHIO ST. THOMAS, ONTARIO

DRAWN BY
MLB
DATE
4-14-04

SCALE
1/8
REVISED
02/20/19

MODEL
U6BS-B /FM
OUTLINE NUMBER
17612