

B

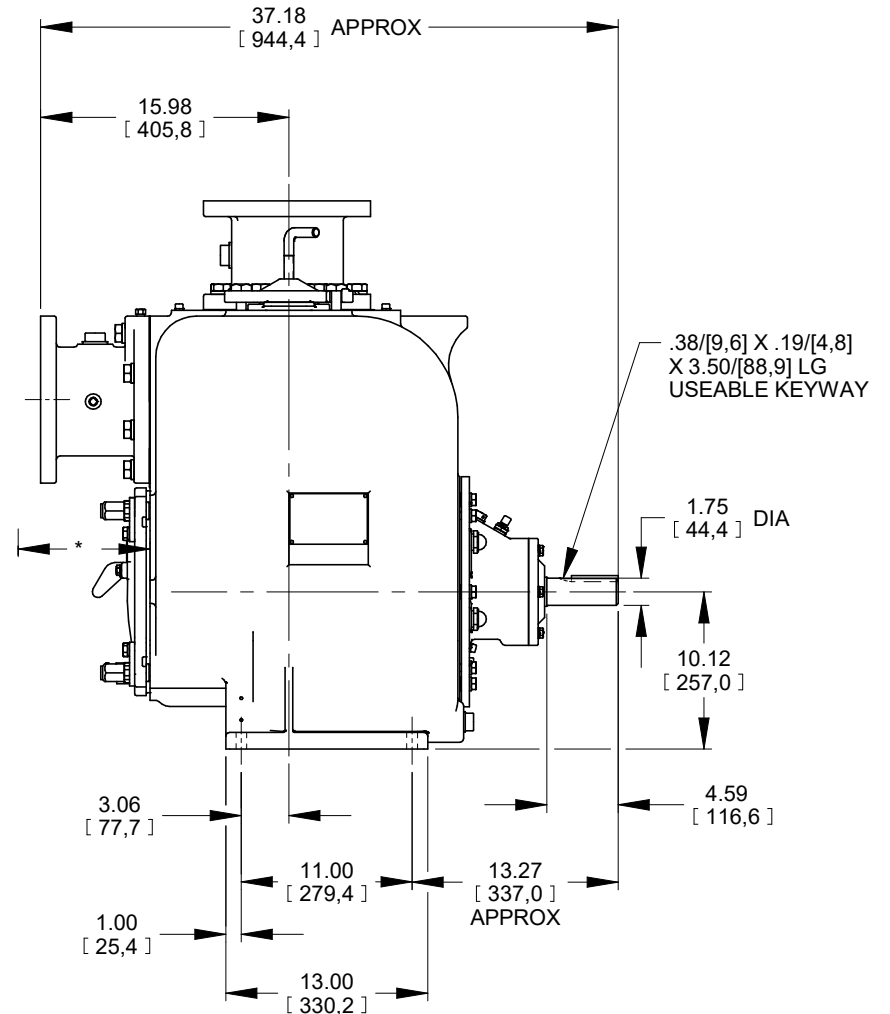
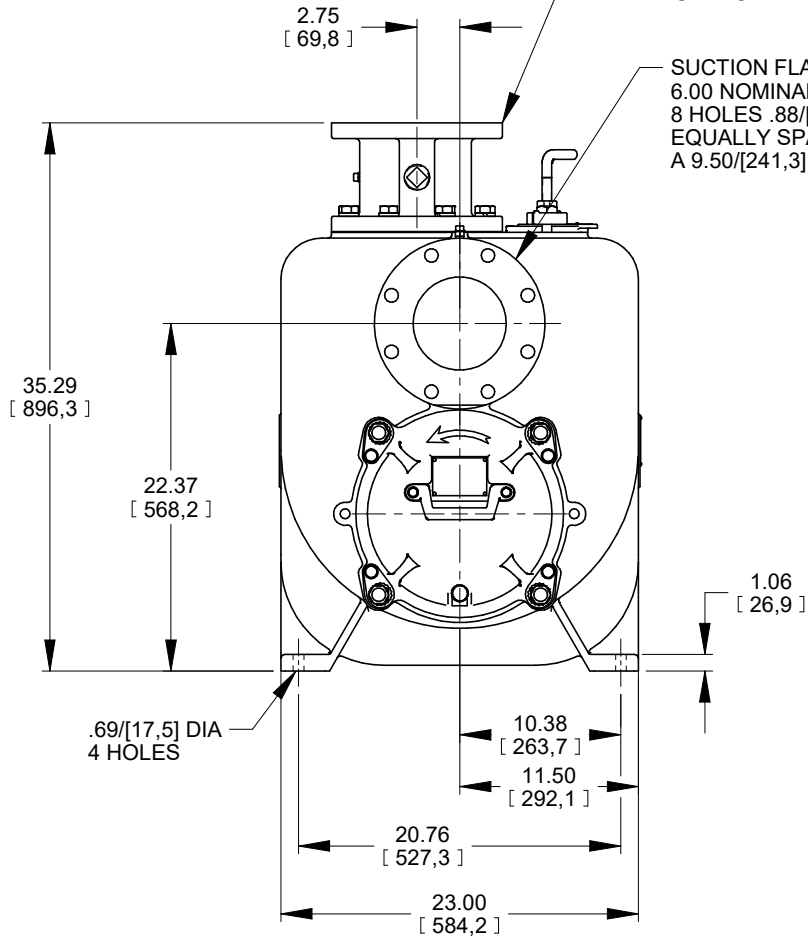
17611

SHEET
1 OF 1

* 24.00/[609,6] RECOMMENDED FOR
REMOVAL OF BACK COVER PLATE
11.50/[292,1] REQUIRED FOR
REMOVAL OF BACK COVER PLATE

DISCHARGE FLANGE:
6.00 NOMINAL WITH
8 HOLES .88/[22,4] DIA
EQUALLY SPACED ON A
9.50/[241,3] DIA BC.

SUCTION FLANGE:
6.00 NOMINAL WITH
8 HOLES .88/[22,4] DIA
EQUALLY SPACED ON
A 9.50/[241,3] DIA BC.



DIMENSIONS:
INCHES
[MILLIMETERS]

19-003



THE GORMAN-RUPP CO.
MANSFIELD, OHIO ST. THOMAS, ONTARIO

DRAWN BY
MLB
DATE
4-14-04

SCALE
1/8
REVISED
02/20/19

MODEL
U6BS-B /F
OUTLINE NUMBER
17611