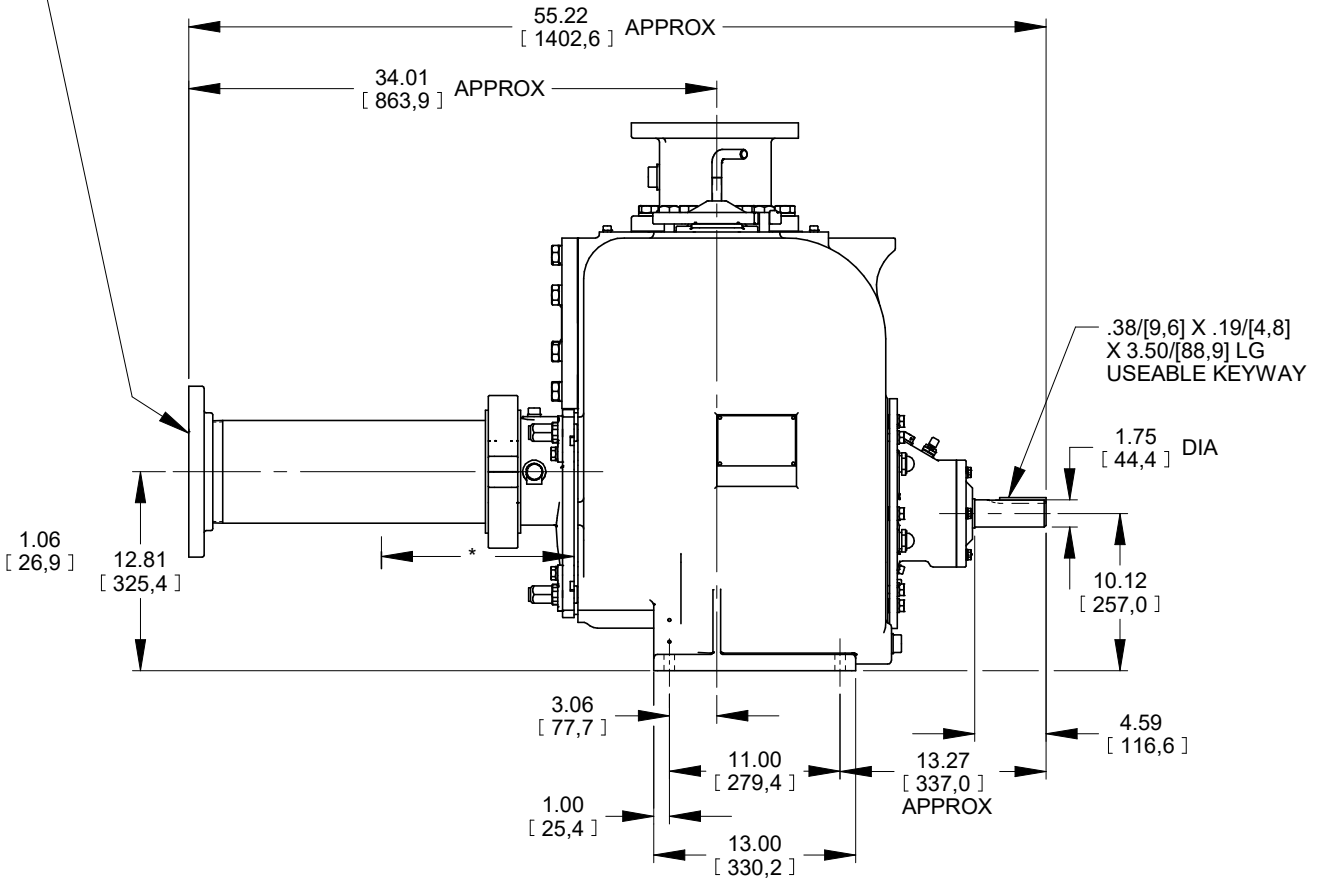
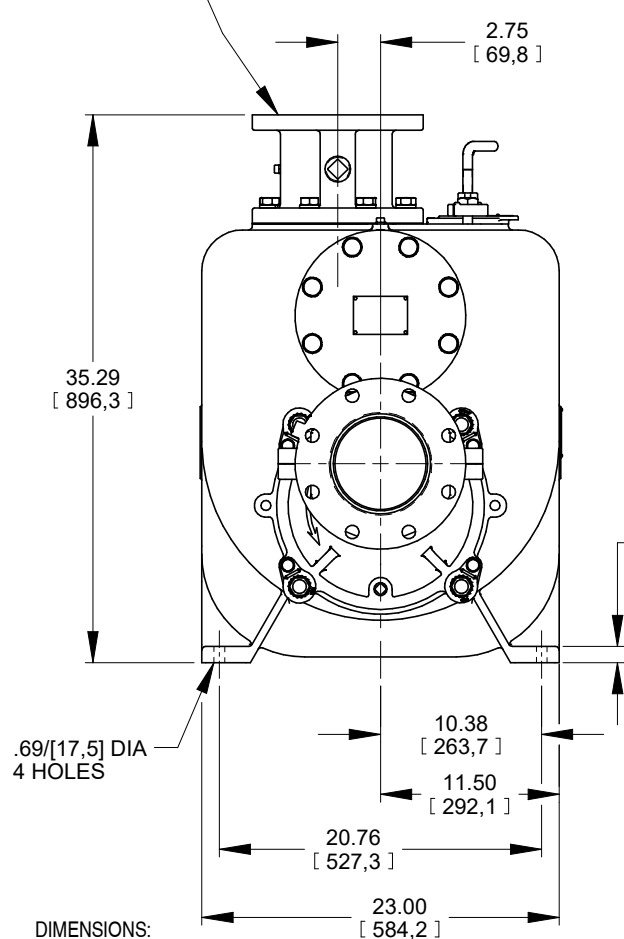


* 24.00/[609,6] RECOMMENDED FOR REMOVAL OF BACK COVER PLATE

11.50/[292,1] REQUIRED FOR REMOVAL OF BACK COVER PLATE

DISCHARGE:
6.00 NOMINAL WITH 8 HOLES
.88/[22,4] DIA EQUALLY SPACED
ON A 9.50/[241,3] DIA BC

SUCTION:
6.00 NOMINAL WITH 8 HOLES
.88/[22,4] DIA EQUALLY SPACED
ON A 9.50/[241,3] DIA BC



DIMENSIONS:
INCHES
[MILLIMETERS]

	THE GORMAN-RUPP CO. MANSFIELD, OHIO ST. THOMAS, ONTARIO		DRAWN BY MLB	SCALE 1/8	MODEL U6AS-B /F
	DATE 4-14-04	REVISED 02-21-19	OUTLINE NUMBER 17609		