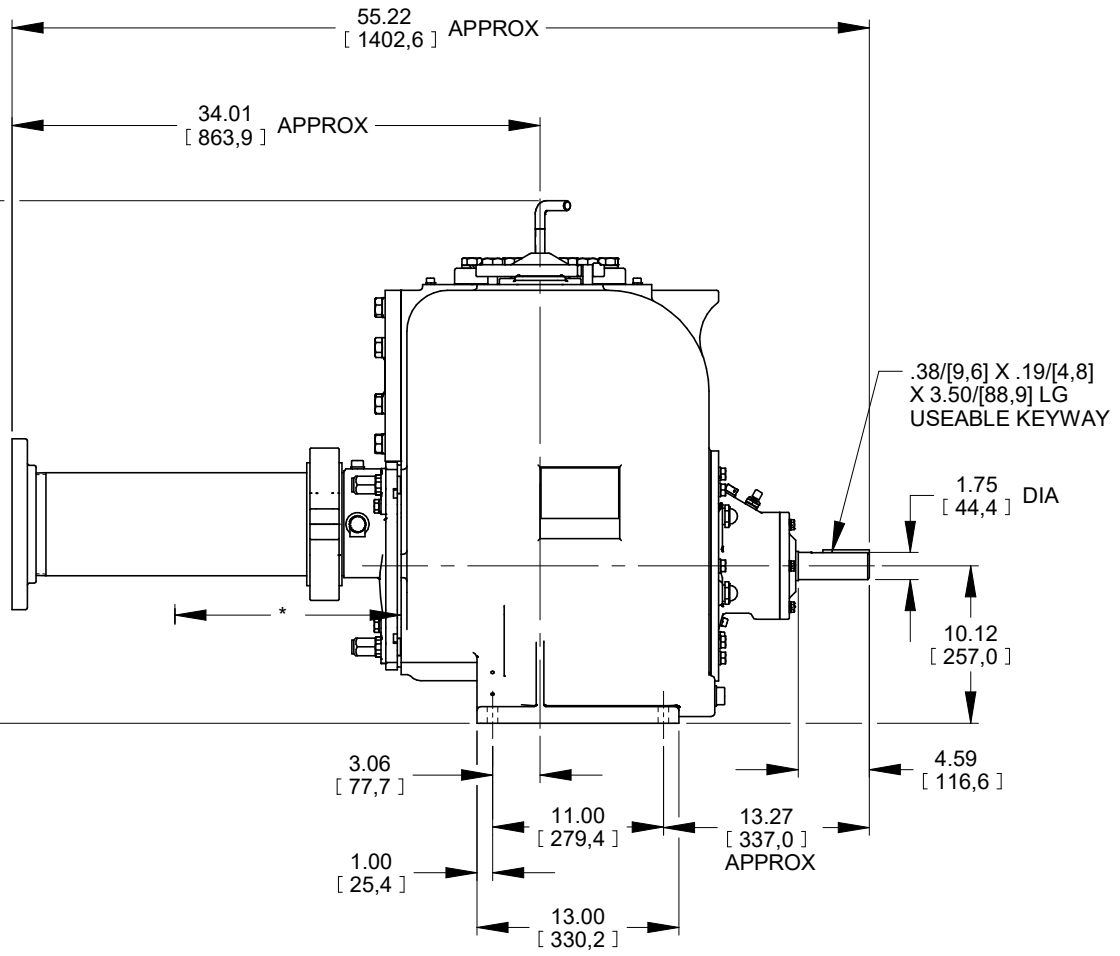
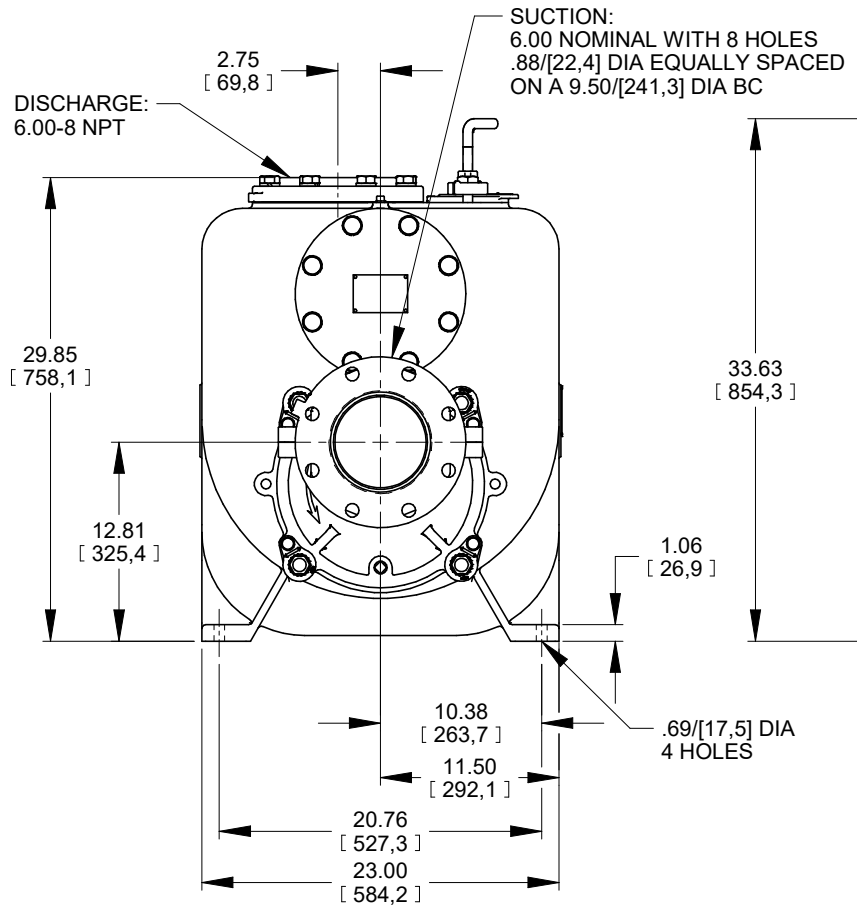


B

17607

SHEET
1 OF 1

* 24.00/[609,6] RECOMMENDED FOR
REMOVAL OF BACK COVER PLATE
11.50/[292,1] REQUIRED FOR
REMOVAL OF BACK COVER PLATE



DIMENSIONS:
INCHES
[MILLIMETERS]

19-003

G&R PUMPS	THE GORMAN-RUPP CO.		DRAWN BY MLB	SCALE 1/8	MODEL U6AS-B
	MANSFIELD, OHIO	ST. THOMAS, ONTARIO	DATE 4-14-04	REVISED 02-21-19	OUTLINE NUMBER 17607