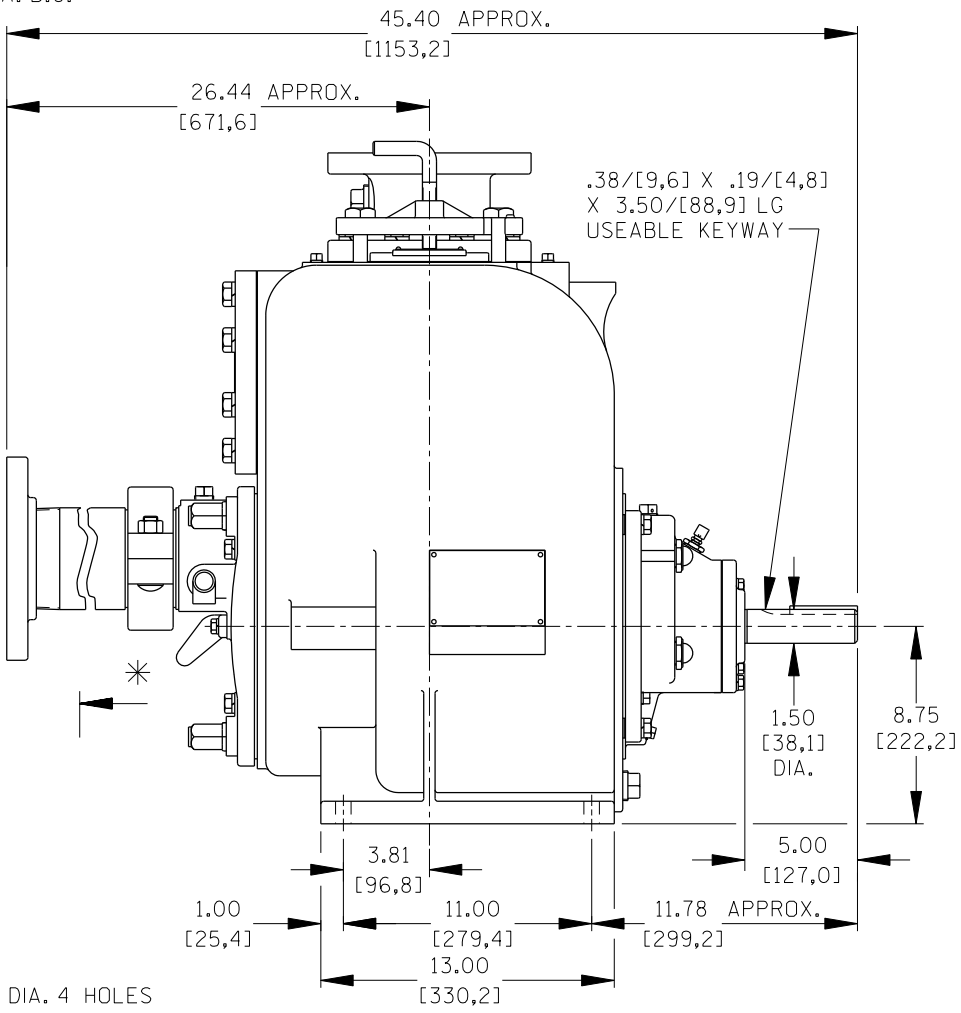
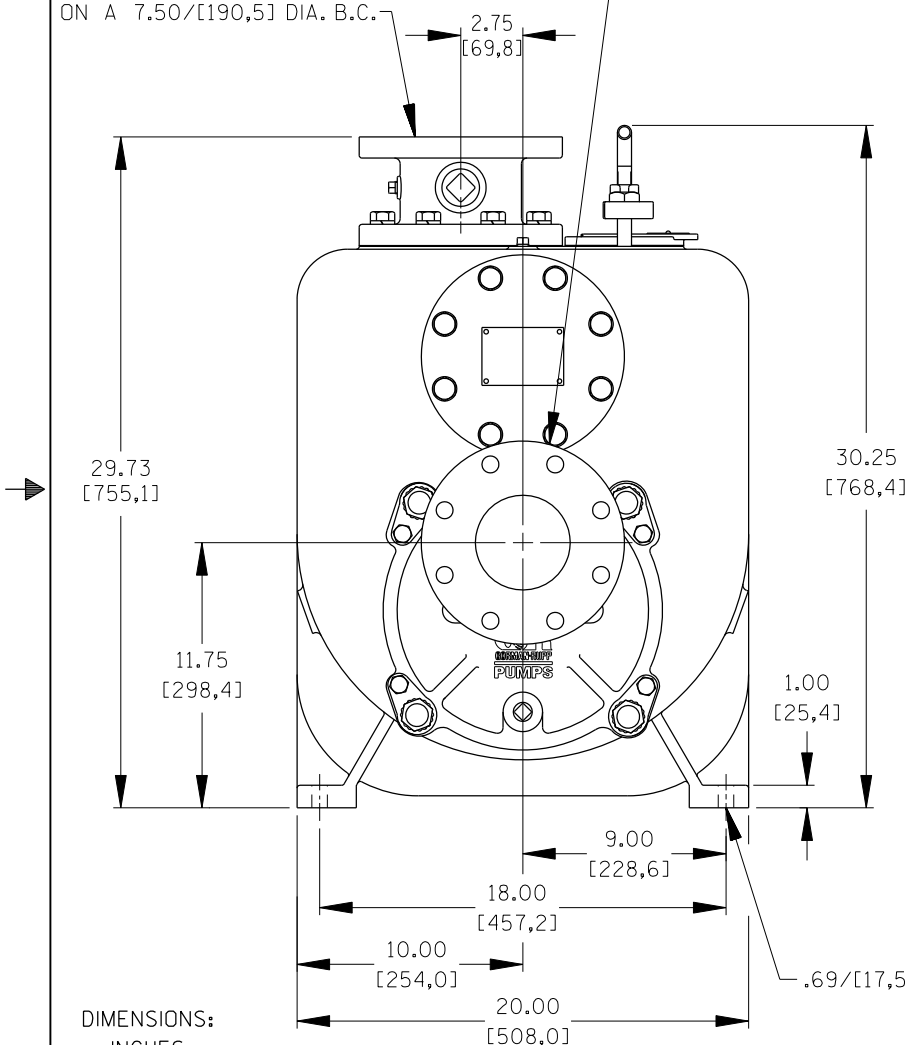


B 17595

* 18.00/[457,2] RECOMMENDED FOR REMOVAL OF BACK COVER PLATE
 10.00/[254,0] REQUIRED FOR REMOVAL OF BACK COVER PLATE

DISCHARGE:
 4.00 NOMINAL WITH 8 HOLES
 .75/[19,0] DIA. EQUALLY SPACED
 ON A 7.50/[190,5] DIA. B.C.

SUCTION:
 4.00 NOMINAL WITH 8 HOLES
 .75/[19,0] DIA. EQUALLY SPACED
 ON A 7.50/[190,5] DIA. B.C.



DIMENSIONS:
 INCHES
 [MILLIMETERS]

07-024

	THE GORMAN-RUPP CO. MANSFIELD, OHIO ST. THOMAS, ONTARIO		DRAWN BY MJR	SCALE 3/16	MODEL U4AS-B /F
	DATE 4-19-04	REVISED 7-10-07	OUTLINE NUMBER 17595		