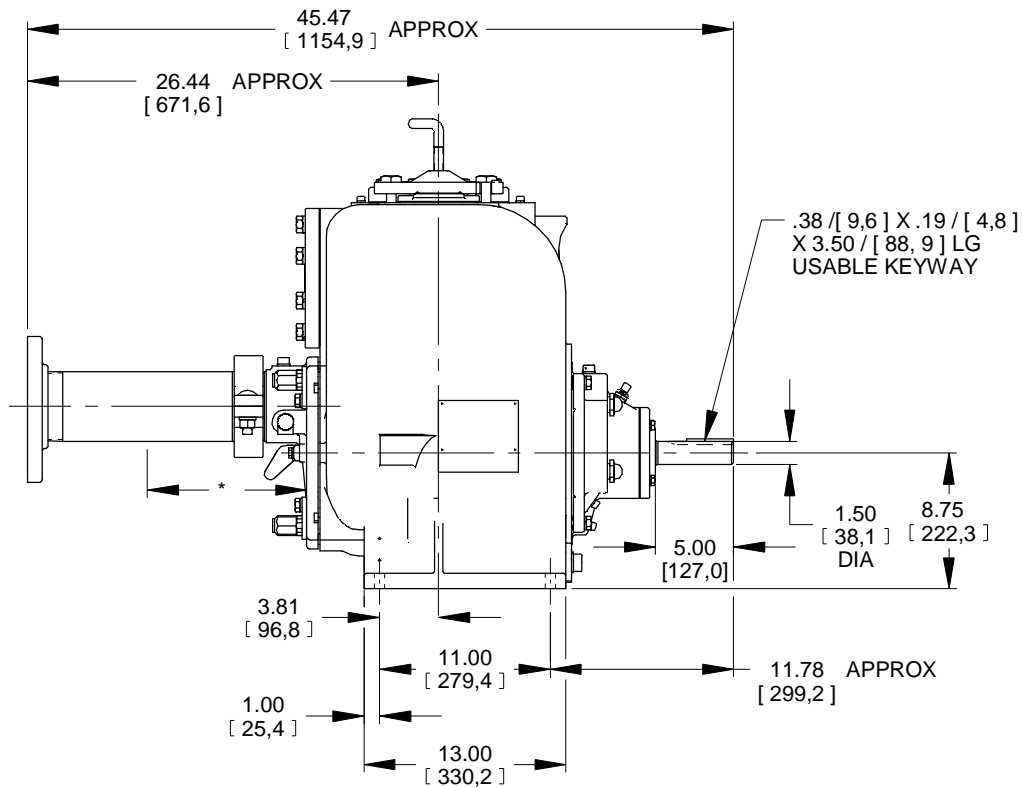
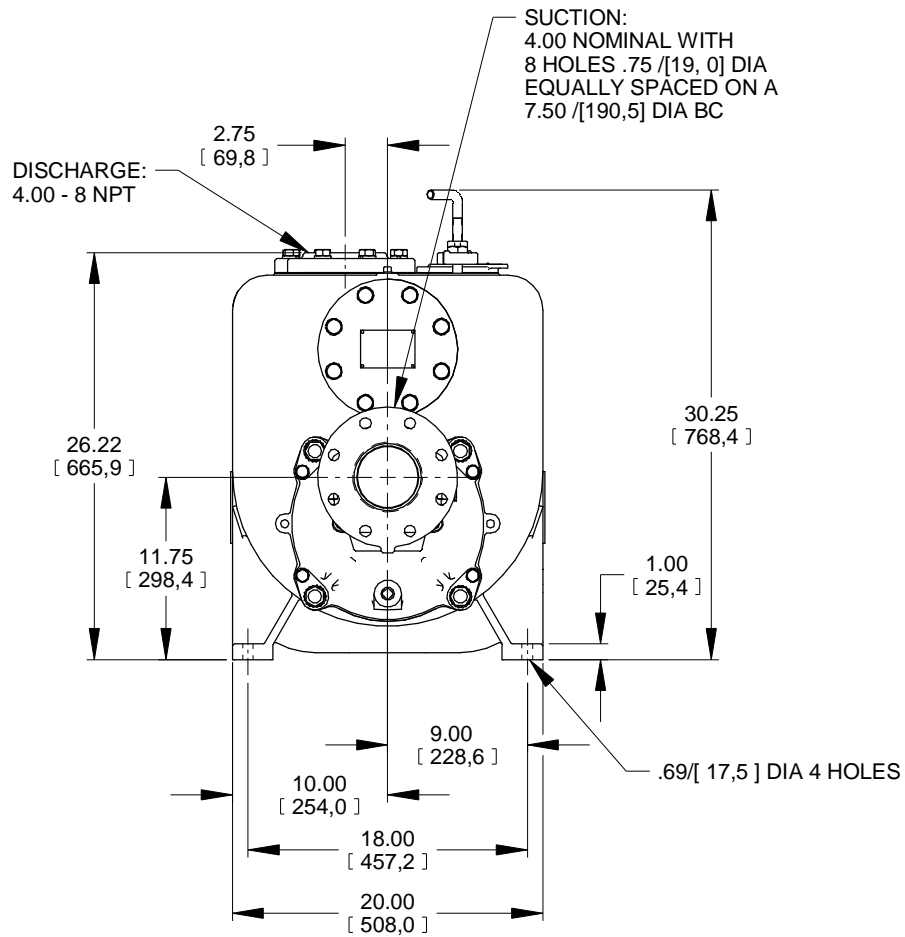


* 18.00 / [457,2] RECOMMENDED FOR
REMOVAL OF BACK COVER PLATE
9.00 / [228,6] REQUIRED FOR
REMOVAL OF BACK COVER PLATE



DIMENSIONS:
INCHES
[MILLIMETERS]

11-023	a	THE GORMAN-RUPP CO.		DRAWN BY	SCALE	MODEL
		MANSFIELD, OHIO	ST. THOMAS, ONTARIO	MLB	1/8	U4AS-B
				DATE	REVISED	OUTLINE NUMBER
				4-19-04	12-7-11	17594