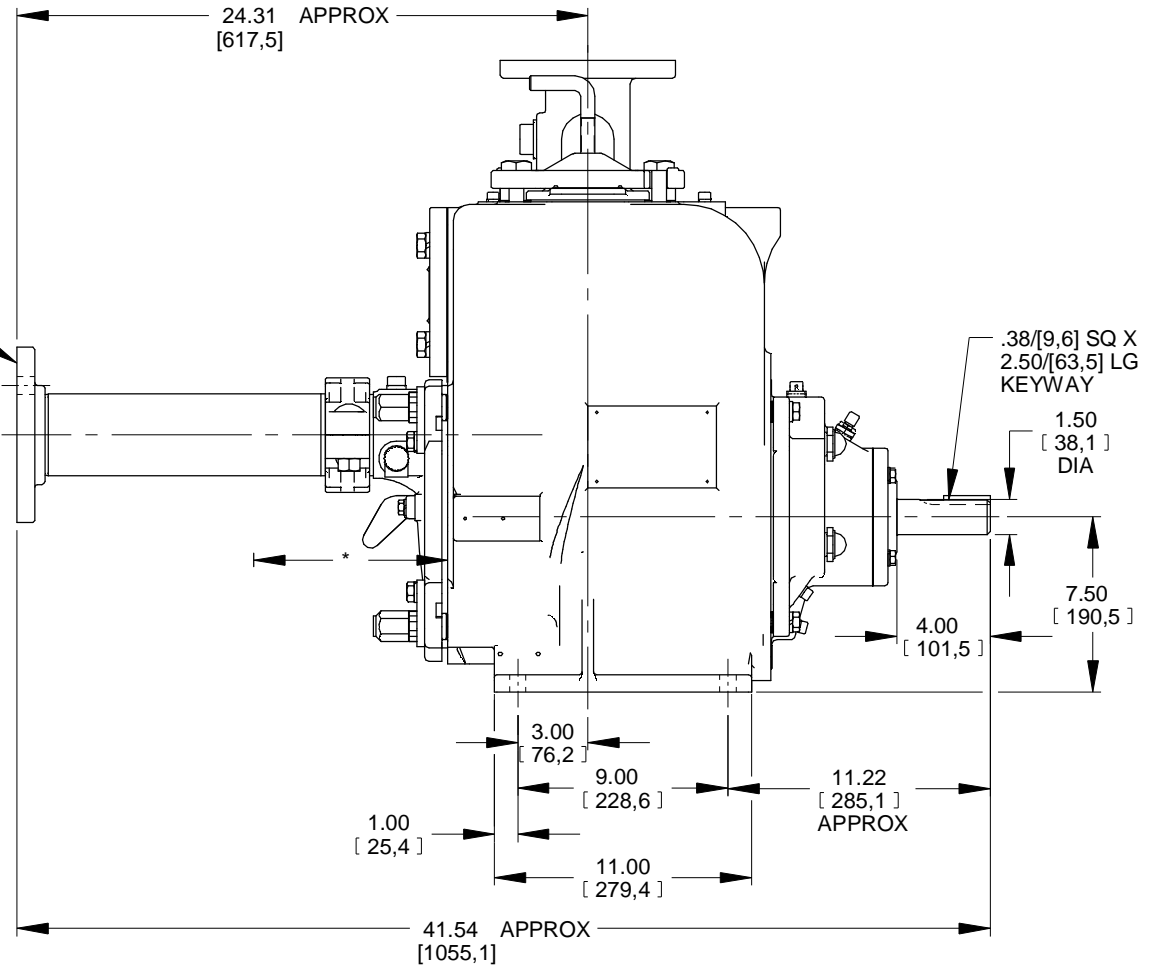
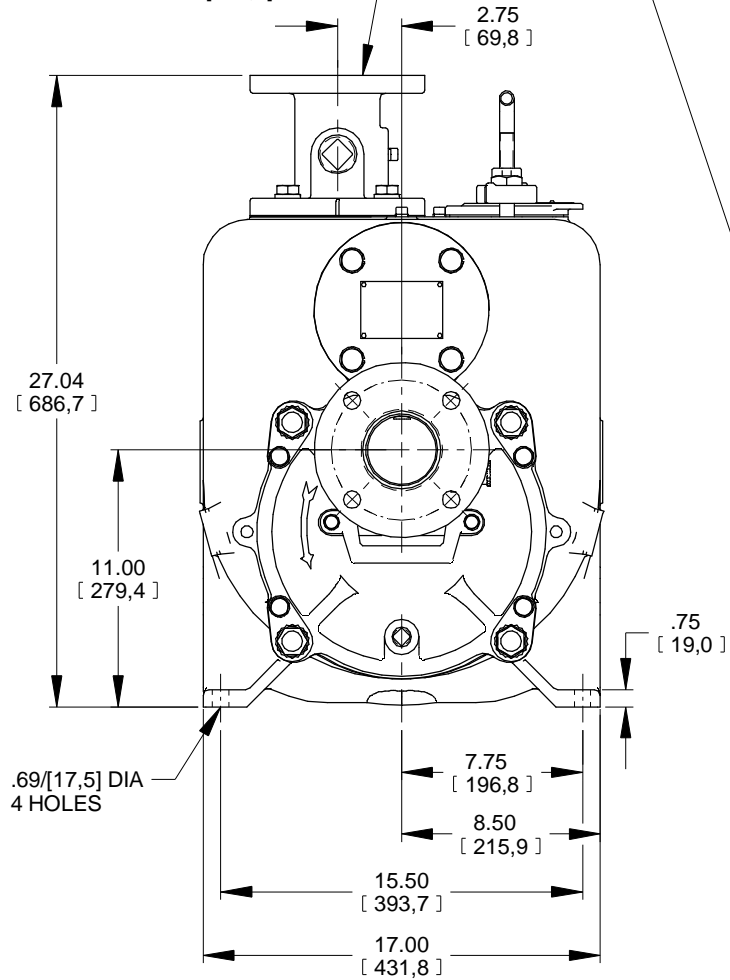


* 18.00/[457,2] RECOMMENDED FOR REMOVAL OF BACK COVER PLATE

7.50/[190,5] REQUIRED FOR REMOVAL OF BACK COVER PLATE

DISCHARGE FLANGE:
3.00 NOMINAL WITH 4 HOLES
.75/[19,0] DIA EQUALLY SPACED
ON A 6.00/[152,4] DIA BC

SUCTION FLANGE:
3.00 NOMINAL WITH 4 HOLES
.75/[19,0] DIA EQUALLY SPACED
ON A 6.00/[152,4] DIA BC



DIMENSIONS:
INCHES
[MILLIMETERS]

11-023

a	THE GORMAN-RUPP CO.		DRAWN BY	SCALE	MODEL
	MANSFIELD, OHIO	ST. THOMAS, ONTARIO	MLB	3/16	U3AS-B /F
			DATE	REVISED	OUTLINE NUMBER
			3-16-04	7-18-12	17589