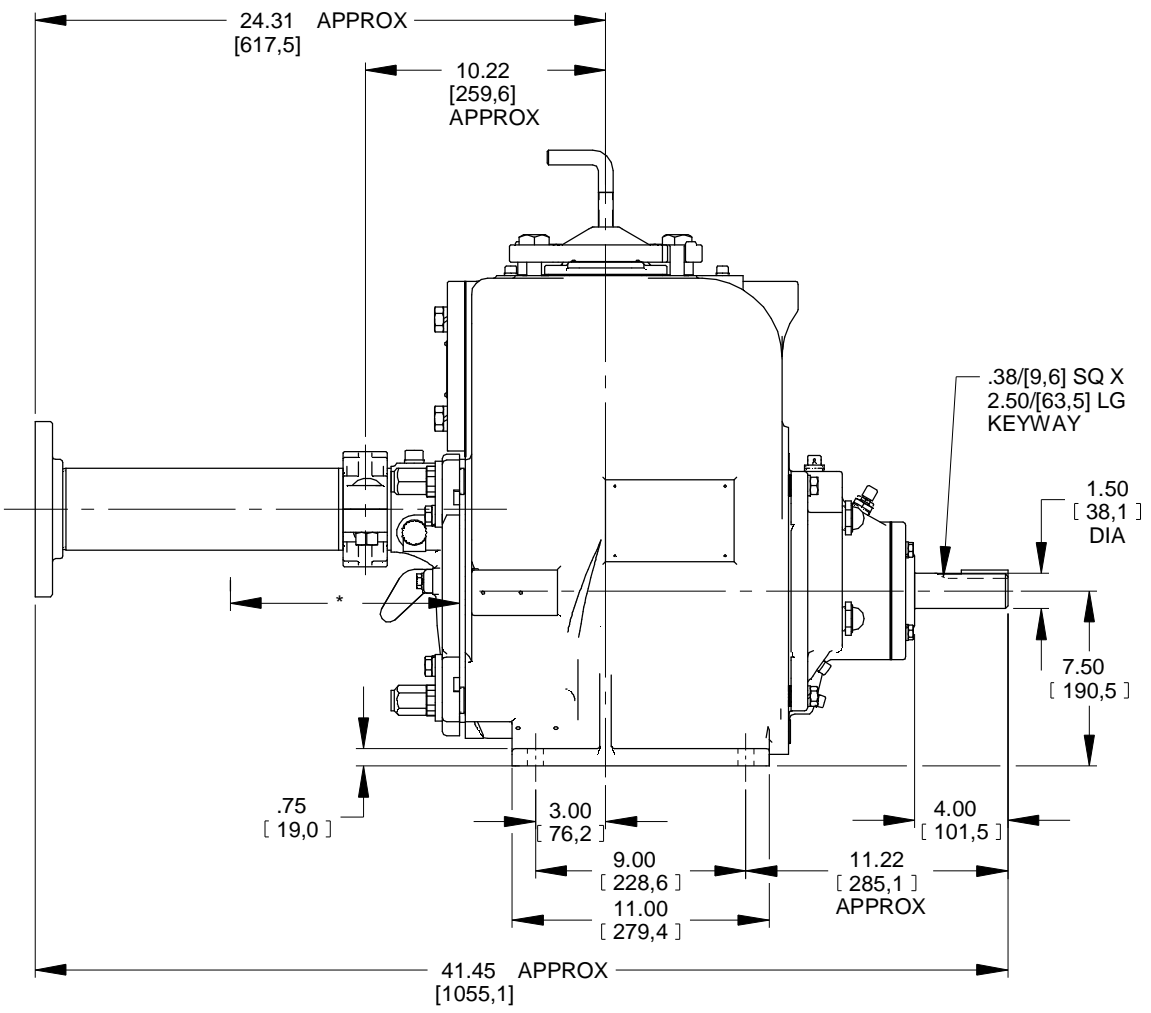
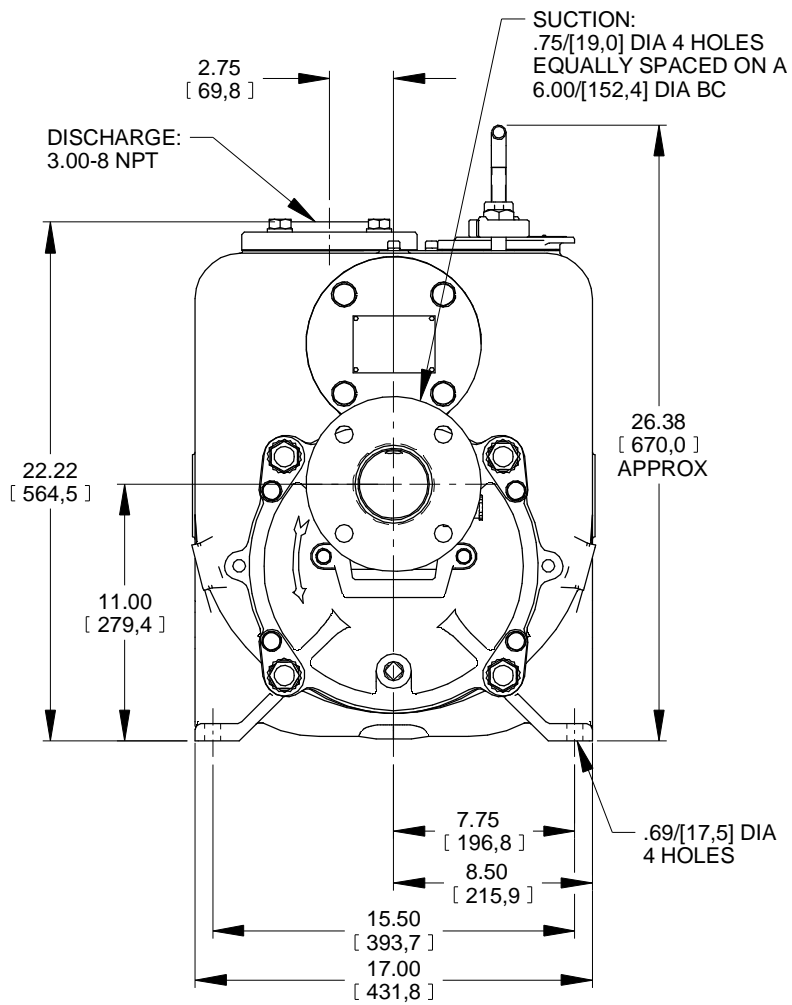


\* 18.00[457,2] RECOMMENDED FOR  
REMOVAL OF BACK COVER PLATE

7.50[190,5] REQUIRED FOR  
REMOVAL OF BACK COVER PLATE



DIMENSIONS:  
INCHES  
[MILLIMETERS]

a	<b>THE GORMAN-RUPP CO.</b>		DRAWN BY MLB	SCALE 3/16	MODEL U3AS-B
	MANSFIELD, OHIO	ST. THOMAS, ONTARIO	DATE 3-15-04	REVISED 7-17-12	OUTLINE NUMBER 17588

11-023