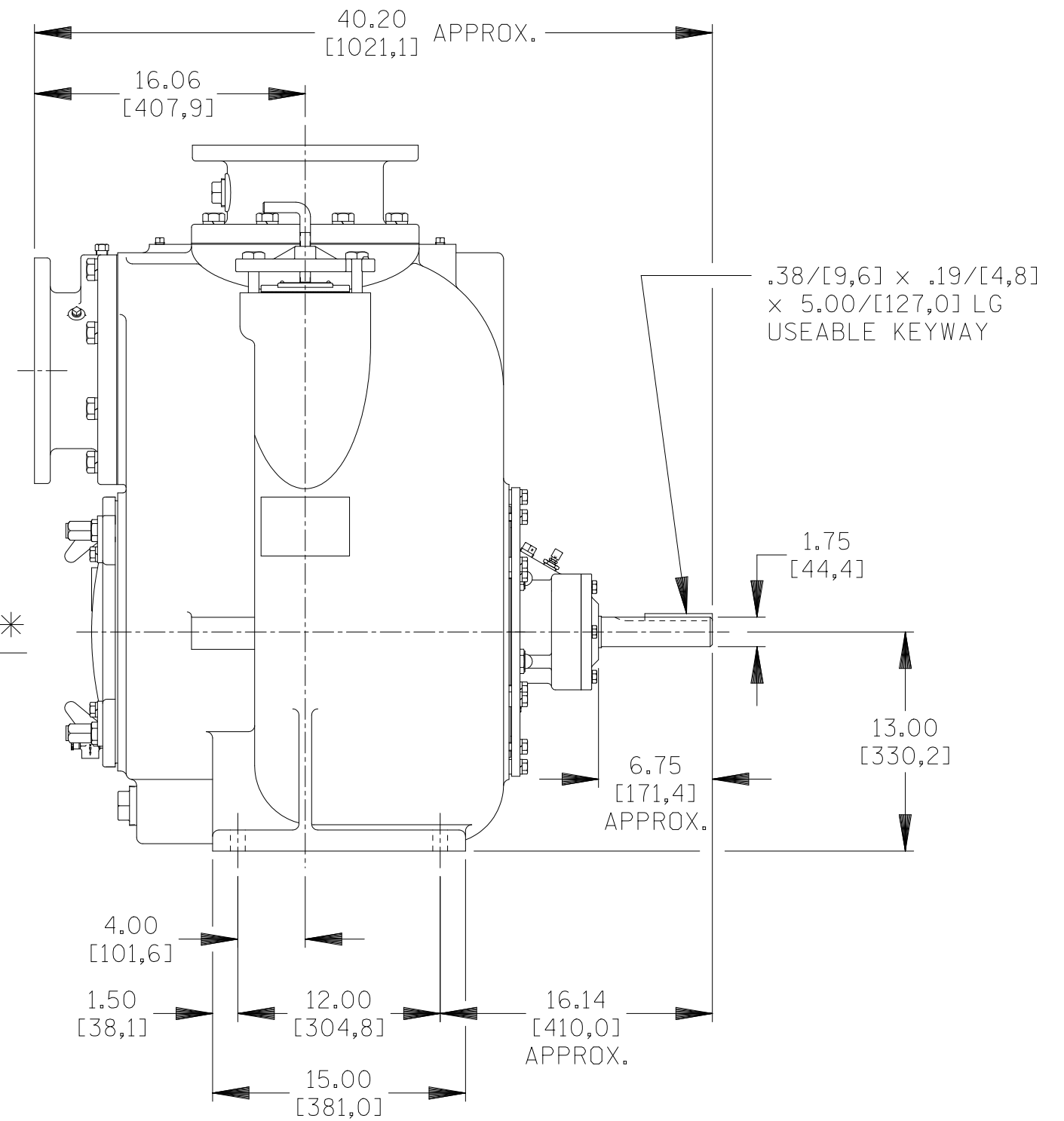
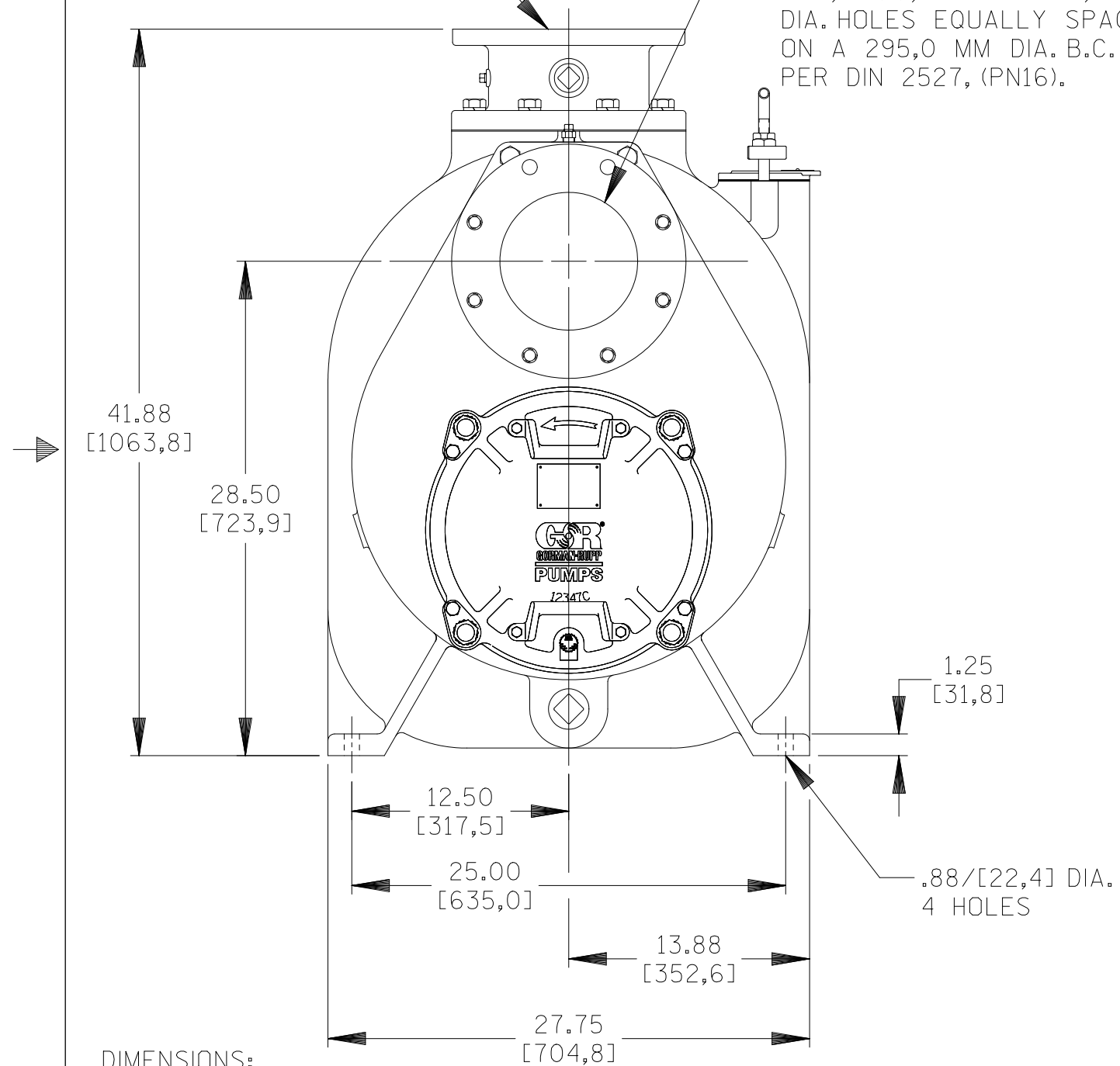


B 17247

\* 24.00/[609,6] RECOMMENDED FOR  
REMOVAL OF BACK COVER PLATE  
13.00/[330,2] REQUIRED FOR  
REMOVAL OF BACK COVER PLATE

METRIC DISCHARGE:  
200,0 MM, WITH (12) 22,0  
MM DIA. HOLES EQUALLY  
SPACED ON A 295,0 MM DIA.  
B.C. PER DIN 2527, (PN16).

METRIC SUCTION:  
200,0 MM, WITH (12) 22,0 MM  
DIA. HOLES EQUALLY SPACED  
ON A 295,0 MM DIA. B.C.  
PER DIN 2527, (PN16).



DIMENSIONS:  
INCHES  
[MILLIMETERS]

	<b>THE GORMAN-RUPP CO.</b> MANSFIELD, OHIO ST. THOMAS, ONTARIO		DRAWN BY VP	SCALE 1/8	MODEL T8AS-B /FM
	DATE 8-8-01	REVISED 7-2-07	OUTLINE NUMBER 17247		

07-024