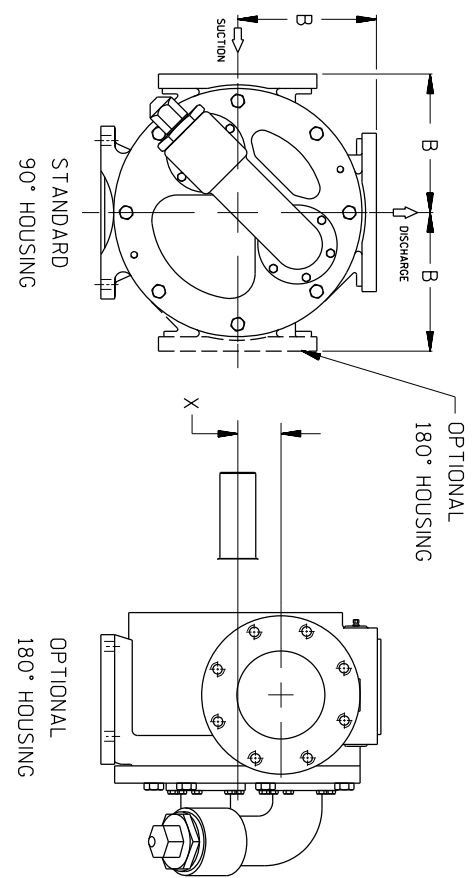
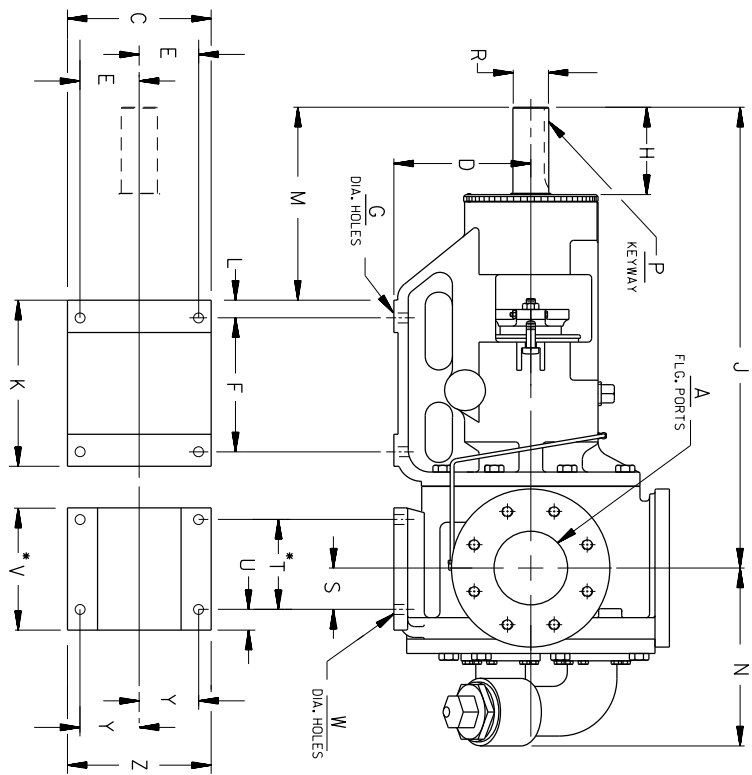
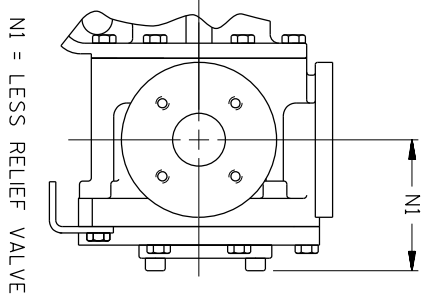


B 16835



* T SIZE 180° HOUSING ONLY.



NI = LESS RELIEF VALVE

CAD FILE NO.: 16835

MODEL NUMBERS	PUMP DIMENSIONS - INCHES [MILLIMETERS]											
	A	B	C	D	E	F	G	H	NI	P	R	S
GHS S	3*	7.75 [197]	10.00 [254]	8.75 [222]	4.12 [105]	4.00 [102]	.69 [8]	4.59 [117]	.50 [13]	2.00 [51]	3.61 [92]	1.79 [45]
GHS S	4*	8.25 [210]	10.00 [254]	8.75 [222]	4.12 [105]	4.00 [102]	.69 [8]	4.59 [117]	.50 [13]	2.00 [51]	3.61 [92]	1.79 [45]
GHS S	†6*	9.00 [229]	10.00 [254]	8.75 [222]	4.12 [105]	4.00 [102]	.69 [8]	4.59 [117]	.50 [13]	2.00 [51]	3.61 [92]	1.79 [45]
GHS T	5*	9.56 [243]	12.00 [305]	9.50 [241]	5.00 [127]	9.31 [236]	.69 [8]	6.06 [154]	.62 [16]	2.50 [64]	2.88 [73]	1.44 [37]
GHS T	6*	9.62 [244]	12.00 [305]	9.50 [241]	5.00 [127]	9.31 [236]	.69 [8]	6.06 [154]	.62 [16]	2.50 [64]	2.88 [73]	1.44 [37]

CAD FILE NO.: 16835

MODEL NUMBERS	PUMP DIMENSIONS - INCHES [MILLIMETERS]											
	A	J	K	L	M	N	NI	P	R	S	T	U
GHS S	3*	23.85 [606]	5.50 [140]	.85 [22]	11.37 [289]	12.49 [317]	7.05 [179]	3.37 [86]	2.00 [51]	3.61 [92]	—	1.79 [45]
GHS S	4*	23.85 [606]	5.50 [140]	.85 [22]	11.37 [289]	12.49 [317]	7.05 [179]	3.37 [86]	2.00 [51]	3.61 [92]	—	1.79 [45]
GHS S	†6*	23.85 [606]	5.50 [140]	.85 [22]	11.37 [289]	12.49 [317]	7.05 [179]	3.37 [86]	2.00 [51]	3.61 [92]	—	1.79 [45]
GHS T	5*	32.00 [813]	11.54 [293]	1.22 [31]	13.40 [340]	12.35 [314]	—	4.62 [117]	2.50 [64]	2.88 [73]	1.44 [37]	8.50 [216]
GHS T	6*	32.00 [813]	11.54 [293]	1.22 [31]	13.40 [340]	12.35 [314]	—	4.62 [117]	2.50 [64]	2.88 [73]	1.44 [37]	8.50 [216]

† 180° HOUSING

CLOCKWISE ROTATION (FROM SHAFT END)

	THE GORMAN-RUPP CO. MANSFIELD, OHIO ST. THOMAS, ONTARIO		DRAWN BY SAR DATE 3-5-98	SCALE NONE REVISED 03-02-20	MODEL GHS "T" 90° OUTLINE NUMBER 16835
--	---	--	-----------------------------	--------------------------------	---

20-019

GHS S/T, SEC. 545: PAGE 27
 JANUARY 2009

- DO NOT SCALE DRAWING.
- GRAPHICS ARE NOT TO SCALE.
- PUMP GRAPHICS ARE BASED ON A "G" SIZE PUMP.

DIMENSIONS:
 INCHES
 [MILLIMETERS]