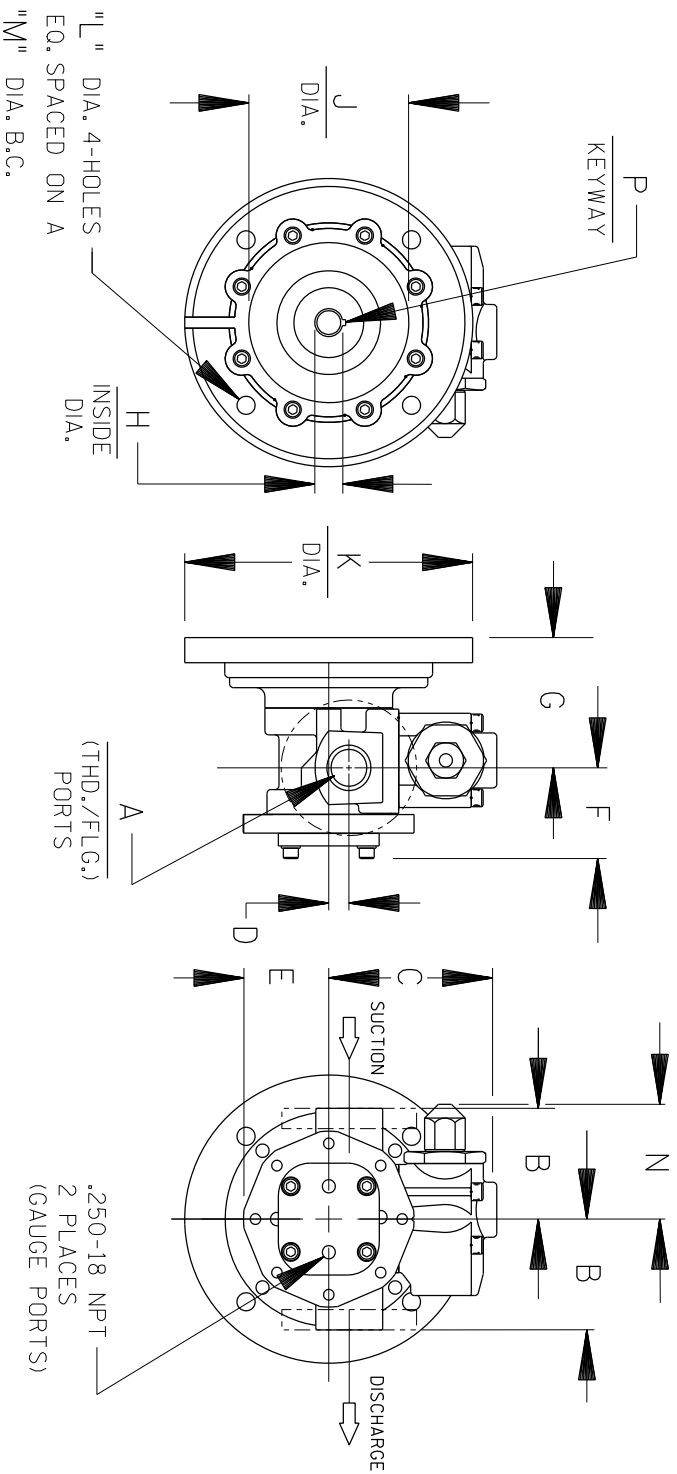


OPTIONAL (WITH ADAPTER PLATE) MOTOR FRAMES 182TC, 184TC, 213C, 213TC, 215C, 215TC, 254C, AE90, AE100, AE112



B 16579

CAD FILE NO.: 16579

PUMP MODEL	PUMP DIMENSIONS - INCHES [MM]							PUMP MOUNTING DIMENSIONS						
	A	B	C	D	E	F	G	H	J	K	L	M	N	P
GMC D [METRIC] AE90 AE110/112	1"	[64] †	[132] †	[16] †	[68] †	[69] †	[117] †	[24] †	[130] †	[200] †	[12] †	[165] †	[91] †	[81] X [46] †
	1-1/2"	[89] †	[152] †	[62] †	[82] †	[85] †	[117] †	[28] †	[180] †	[250] †	[14] †	[184] †	[92] †	[81] X [56] †
GMC G	2"	[95] †	[152] †	[62] †	[82] †	[85] †	[117] †	[35] †	[216] †	[229] †	[14] †	[184] †	[92] †	[81] X [64] †
	1-1/2"	[89] †	[152] †	[62] †	[82] †	[85] †	[117] †	[28] †	[130] †	[200] †	[12] †	[165] †	[92] †	[81] X [46] †
GMC G [METRIC]	AE90 AE110/112													[81] X [56] †

† STANDARD DIMENSION
‡ 90° HOUSING

180° HOUSING PORTS
HOUSING MOUNTED RELIEF VALVE
BASIC PUMP MODEL
WITH OPTIONAL ADAPTOR PLATE

CLOCKWISE ROTATION
(FROM SHAFT END)

THE GORMAN-RUPP CO. MANSFIELD, OHIO ST. THOMAS, ONTARIO	DRAWN BY	SCALE	MODEL
	SAR	NONE	GMC 180°
DATE	REVISED	OUTLINE NUMBER	
8-8-94	12-11-08	16579	

DIMENSIONS:
INCHES
[MILLIMETERS]

1. DO NOT SCALE DRAWING.
2. GRAPHICS ARE NOT TO SCALE.
3. PUMP GRAPHICS ARE BASED ON A "G" SIZE PUMP.

GMC, SEC. 520: PAGE 13
JULY 2009

08-048